

MINUTES FROM THE
**SALT LAKE CITY
INTERNATIONAL AIRPORT**



CALIFORNIA AVENUE

LAND DEVELOPMENT OPPORTUNITY

3930 WEST CALIFORNIA AVENUE
SALT LAKE CITY, UT 84104



**CUSHMAN &
WAKEFIELD**

LAND DEVELOPMENT OPPORTUNITY

This site is located within a 5-minute drive from the airport and is positioned between Bangerter Highway and I-215 with frontage along California Avenue. Located in an M-1 zone, this 4.78 acre site has tremendous use optionality and is also approved for hospitality development.

 **4.78**
ACRE SITE

 **M-1**
ZONING

 **5 MINUTES**
FROM AIRPORT

 **10 MINUTES**
FROM DOWNTOWN SLC

 **APPROVED**
FOR HOTEL DEVELOPMENT

 **PRICING**
CONTACT BROKER



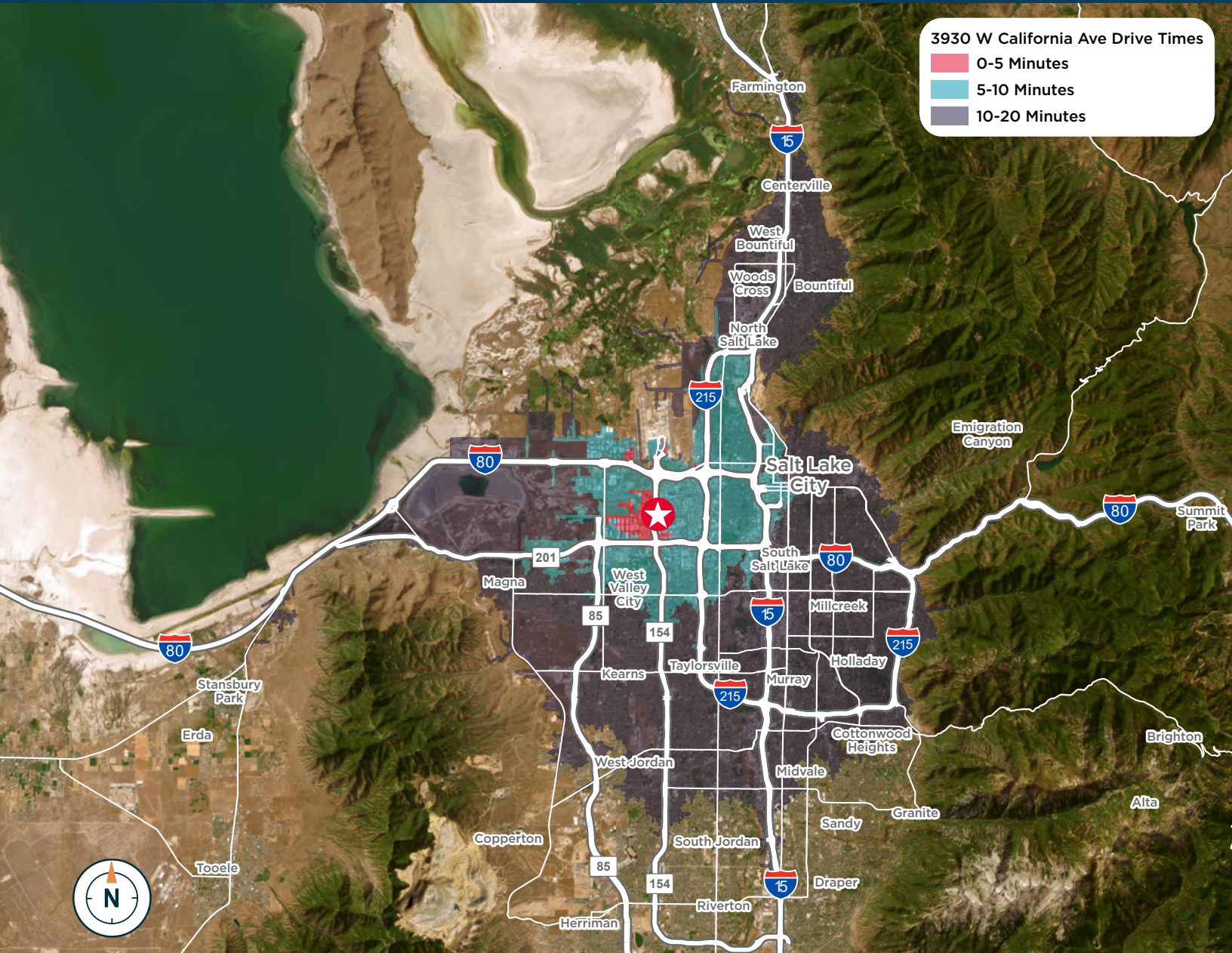
Salt Lake City International Airport (SLC) is ranked as the 21st busiest airport in the United States and the 70th busiest globally. With over 330 daily flights to 95 nonstop destinations, it's a major gateway for travelers.

The airport is currently undergoing a \$5.1 billion redevelopment program known as "The New SLC."

Photo Credit: Salt Lake City International Airport

LAND DEVELOPMENT OPPORTUNITY

3930 WEST CALIFORNIA AVENUE • SALT LAKE CITY, UT 84104



CONTACT

ADAM A. GATTO

Managing Director
Hospitality | Capital Markets
+1 801 303 5561
adam.gatto@cushwake.com

JT REDD

Director
Capital Markets
+1 801 303 5569
jt.redd@cushwake.com

PAUL KING REDD TEAM

MICHAEL KING

Director
Capital Markets
+1 801 303 5421
michael.king@cushwake.com

KIP PAUL

Vice Chair
Investment Sales
+1 801 303 5555
kip.paul@cushwake.com

170 South Main Street
Suite 1600
Salt Lake City, UT 84101
+1 801 322 2000
cushmanwakefield.com



©2024 Cushman & Wakefield. All rights reserved. The material in this presentation has been prepared solely for information purposes, and is strictly confidential. Any disclosure, use, copying or circulation of this presentation (or the information contained within it) is strictly prohibited, unless you have obtained Cushman & Wakefield's prior written consent. The views expressed in this presentation are the views of the author and do not necessarily reflect the views of Cushman & Wakefield. Neither this presentation nor any part of it shall form the basis of, or be relied upon in connection with any offer, or act as an inducement to enter into any contract or commitment whatsoever. NO REPRESENTATION OR WARRANTY IS GIVEN, EXPRESS OR IMPLIED, AS TO THE ACCURACY OF THE INFORMATION CONTAINED WITHIN THIS PRESENTATION, AND CUSHMAN & WAKEFIELD IS UNDER NO OBLIGATION TO SUBSEQUENTLY CORRECT IT IN THE EVENT OF ERRORS.