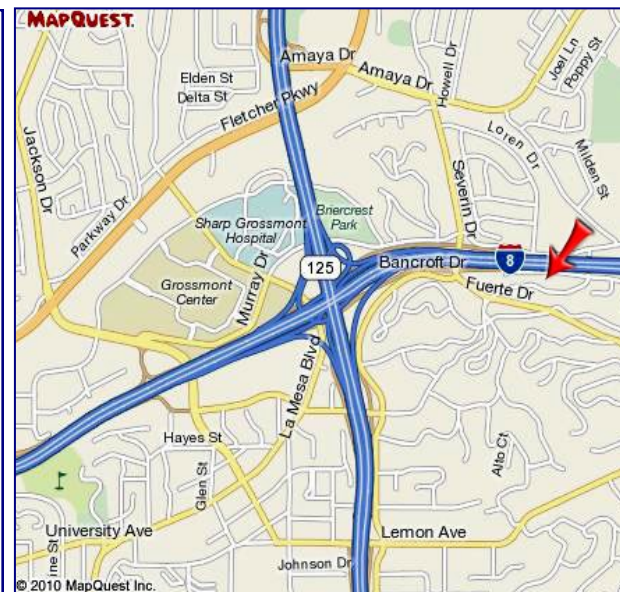


FOR LEASE
Offices - High Visibility

9400 Grossmont Summit Dr.
La Mesa, CA, 91941



- ◆ Suites ranging from 1,302 - 2,000 sq.ft.
- ◆ Can combine suites 203 & 204, for 2,608 sq.ft.
- ◆ Unique architecture with lots of glass
- ◆ Underground parking with 3 per 1,000 SF parking
- ◆ Building has very high exposure to Interstate 8 with 228,000 vehicles per day (Caltrans - 2015)
- ◆ Building has hi-speed Cox Cable
- ◆ Energy efficient - LEED Certified
- ◆ Great signage opportunities
- ◆ Priced at \$2.00 SF, NNN (\$1.00 SF)



SDCRE

San Diego Commercial Real Estate
BRE #01322469

8200 Allison Avenue, La Mesa, CA 91942
www.SanDiegoCRE.com

For further information please contact:

Mark Robak

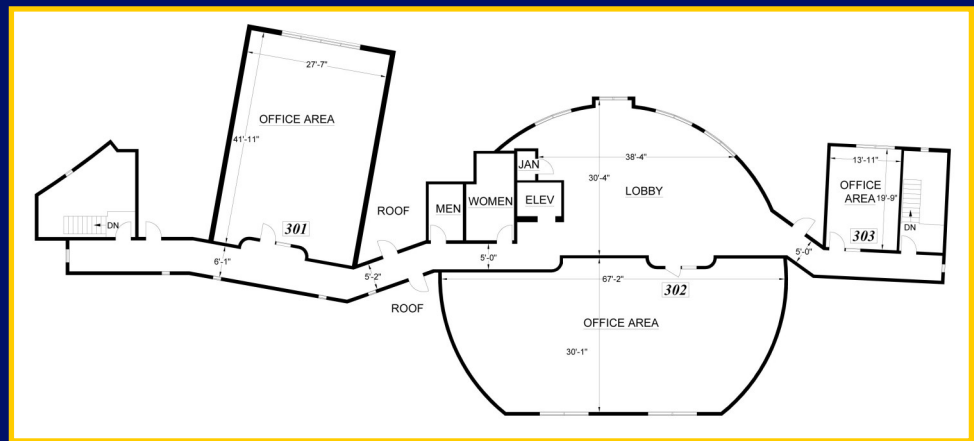
619-778-3800

Mark@SanDiegoCRE.com

BRE #01024745

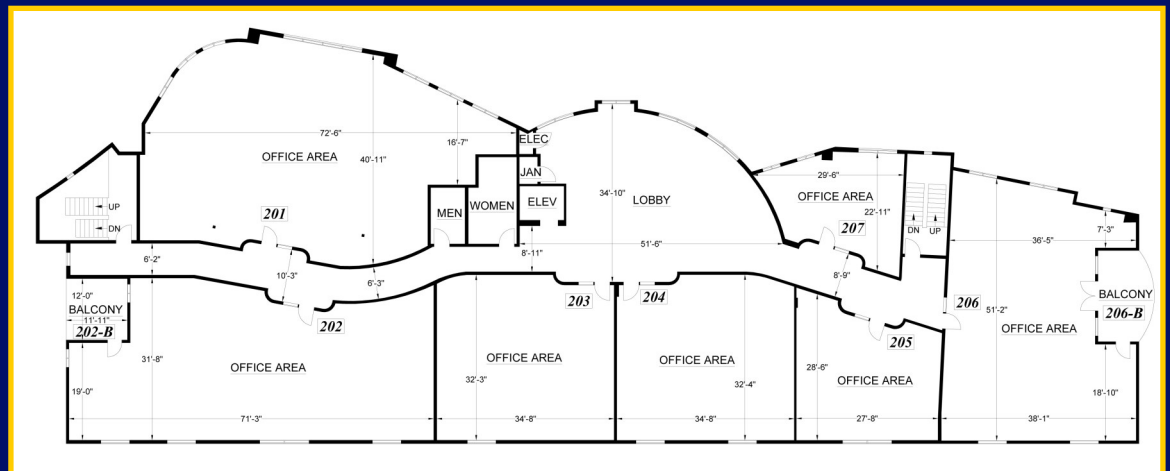
This information above was furnished by the owner or obtained from information we understand was authorized by the owner. No warranties or representations, expressed or implied, are made as to the accuracy of the information contained herein, and same is submitted subject to errors, omissions, change of price, rental or other conditions, withdrawal without notice, and to any special listing conditions imposed by our principals. This information is given with the understanding that all negotiations relating to the leasing or potentially purchasing of the property described herein shall be conducted through SDCRE.

301 — 1,308 sf
 302 - 2,000 sf
 303 — 320 sf



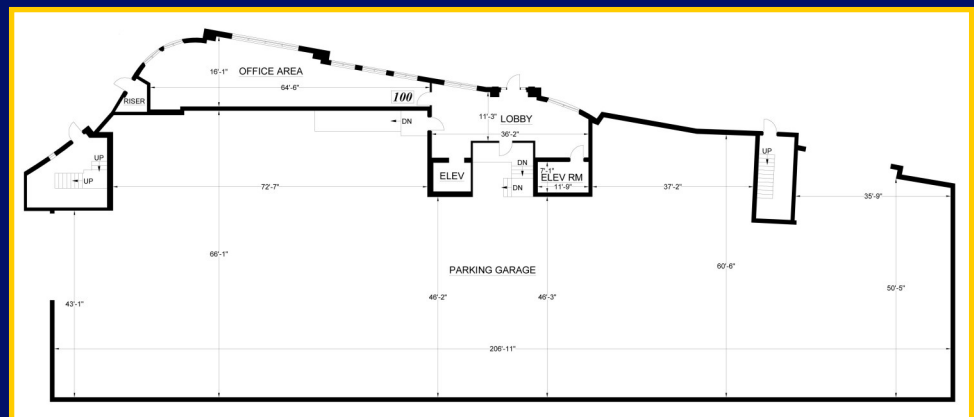
Top Level

201 — 2,694 sf
 202 — 2,252 sf
 203 - 1,306 sf
 204 - 1,302 sf
 205 — 808 sf
 206 — 1,926 sf
 207 — 558 sf

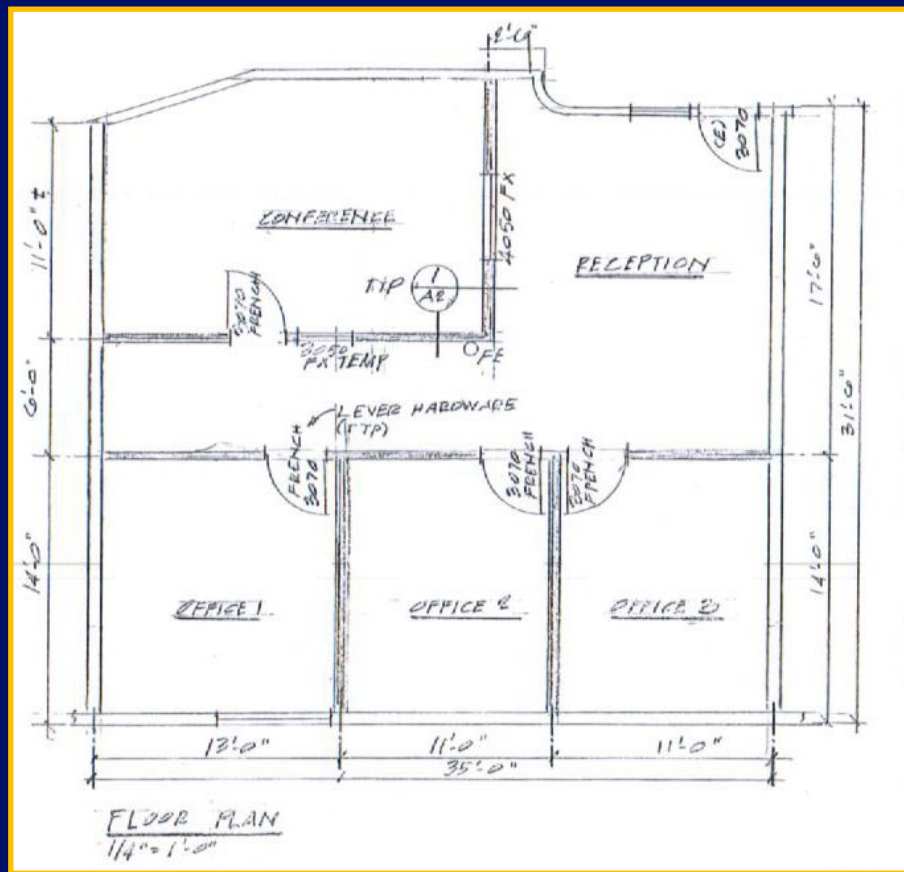


Main Level

100 — 904 sf
 Parking Spaces
 Covered - 33
 Uncovered - 8
 Total - 41



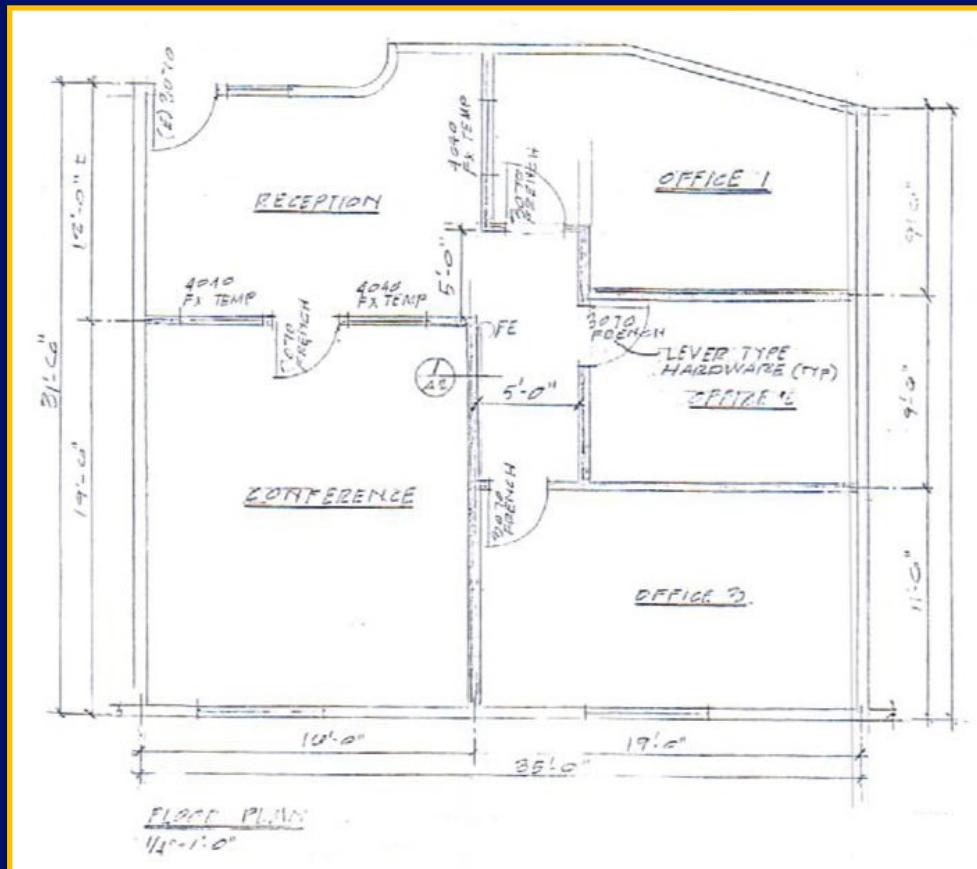
Parking Level



Suite 203 Floor Plan



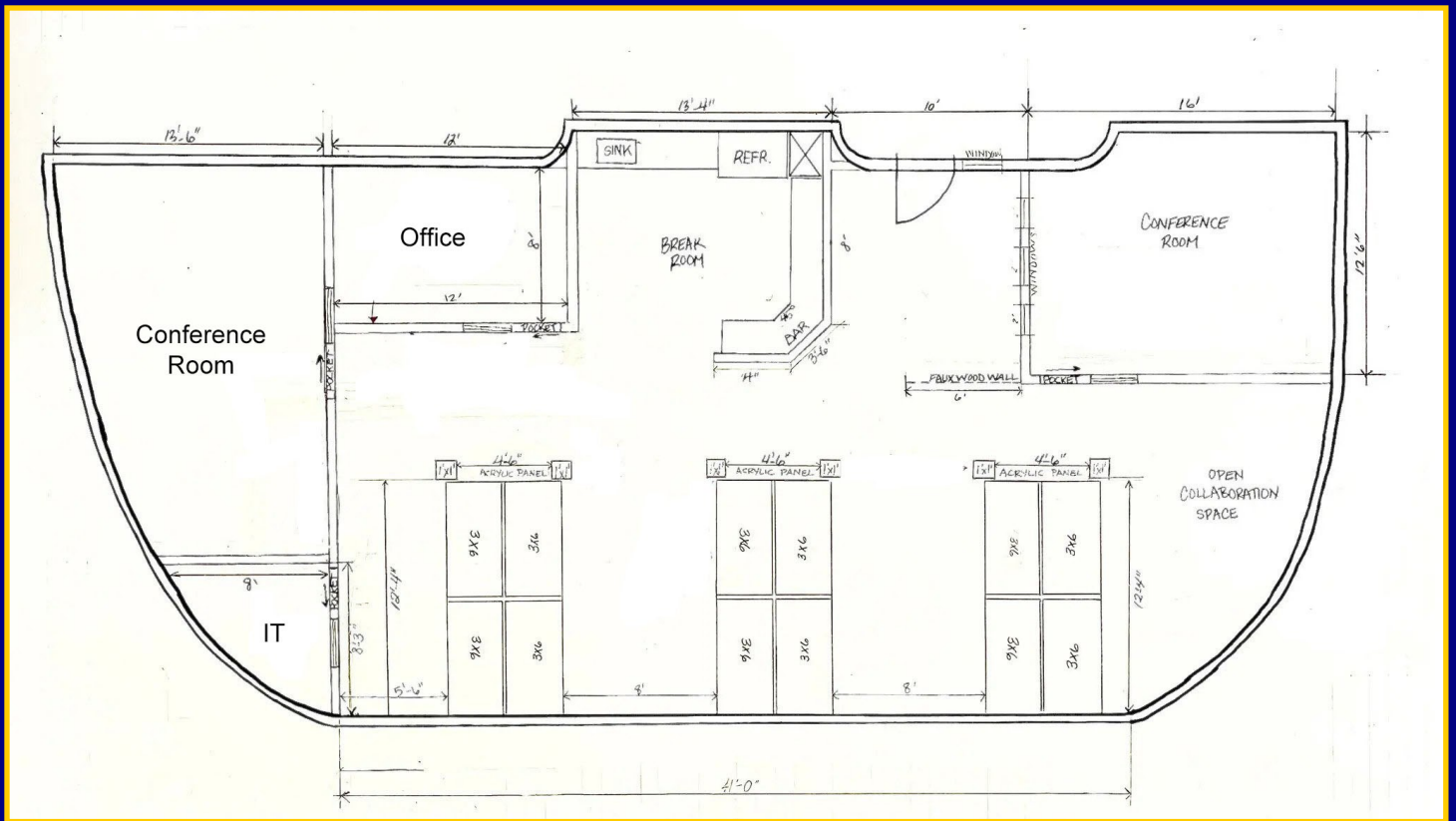
Entering Suite - Tenant to choose Carpet Color



Suite 204 Floor Plan



Entering Suite - Tenant to choose Carpet Color



Suite 302 -Floor plan



Kitchen/Break Room



Kitchen/Break Room

Conference Room
(1 of 2)



Private Office



Main hallway facing
main office area

Lobby Area



Main hallway facing
break room



Aerial View



Front View



Hi-Image



Distinctive