



FOR SALE

COMMERCIAL CONDO

501 E 2700 S
SALT LAKE CITY, UT

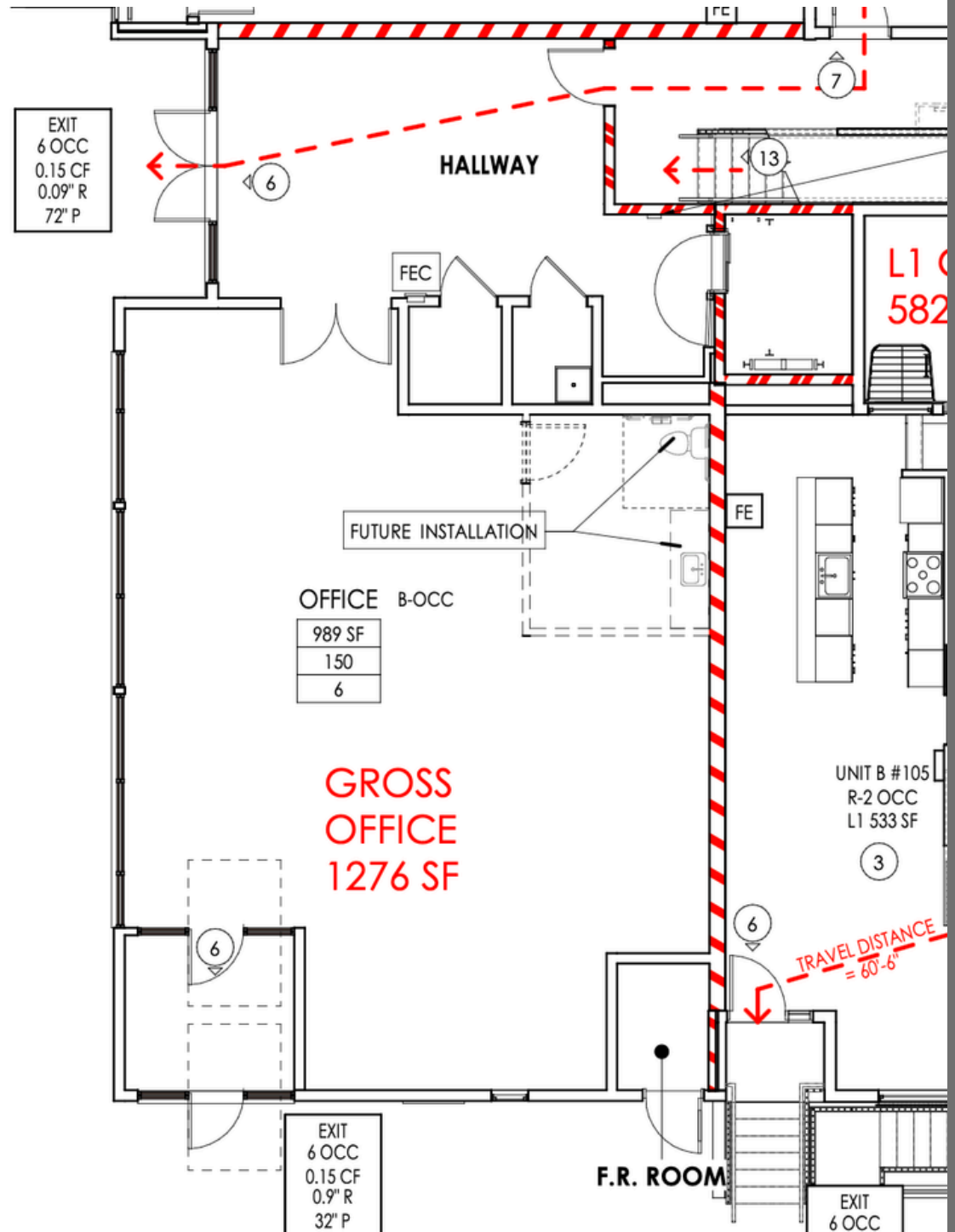
JONAH HORNSBY, CCIM
JONAH@ACRESUTAH.COM
801.580.4945

ALIGN
COMPLETE REAL ESTATE SERVICES

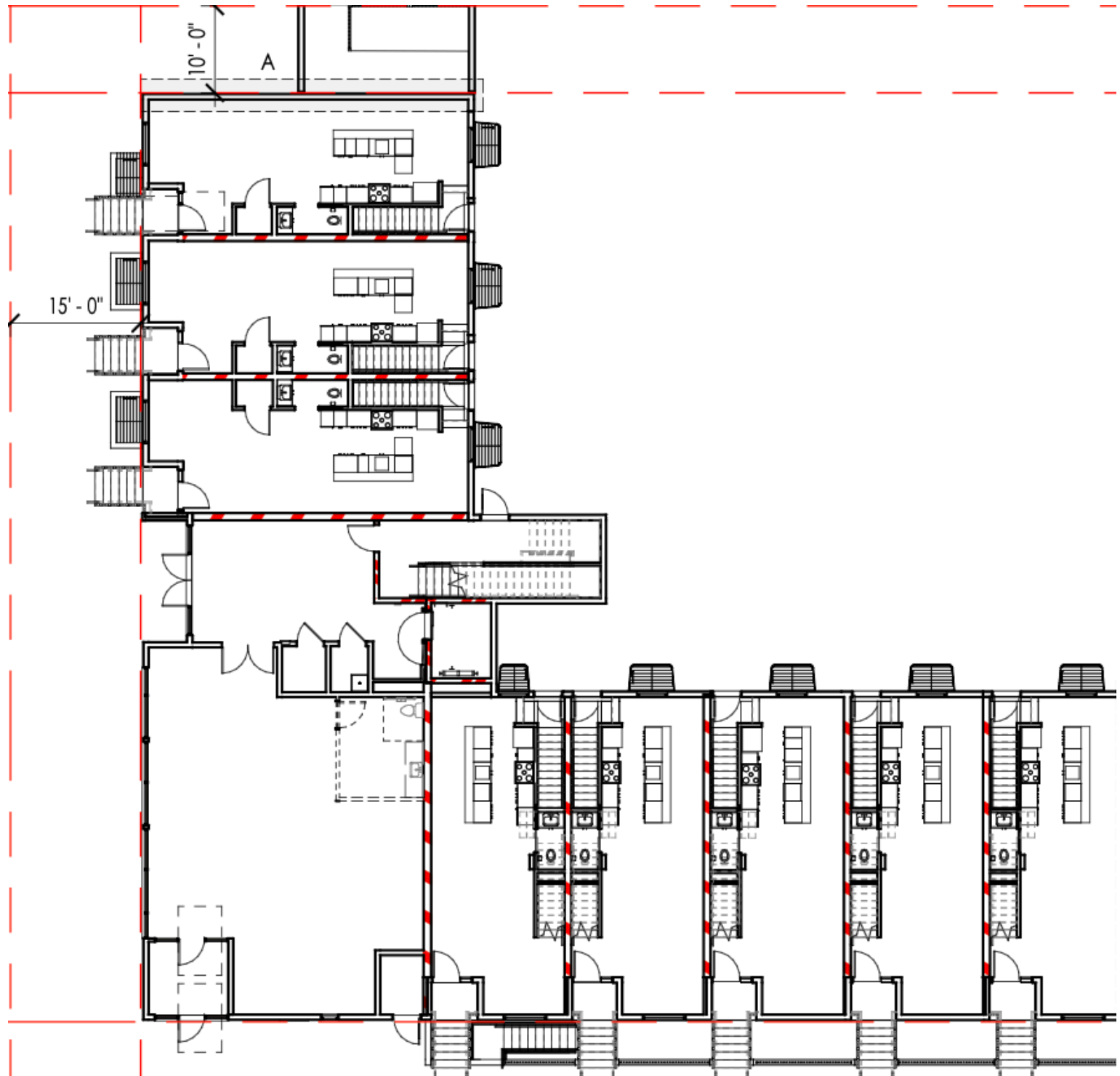
PROPERTY DETAILS

Address	501 W 2700 S
Asset Type	Retail/Office Condo
Building Size	1,276
List Price	\$459,000 *
Year Built	2025
Parcel Number	16-19-476-059
Zoning	CN (Comm Neighborhood)
Features	A part of the Harvey Condos
	Hard Corner
	Near Sugarhouse, Freeway
	Main Level with Storefront

*Additional \$10,000 Incentive Offered to Buyer



SITE PLAN



LOCAL AREA MAP





