



For Lease

Lease Rate:

\$7,000/Acre/Month
NNN

1893 Louisville Road Savannah, GA 31415

±2 - 4.95 AC Trailer Yard

- 171 total trailer parking spaces
- Constructed in 2023
- 1,974' of landing pads
- Yard Spec - 12" thickness: 6" of recycled GAB plus 6" of granite GAB
- Located only 0.8 miles from GPA Ocean Terminal
- Available Now

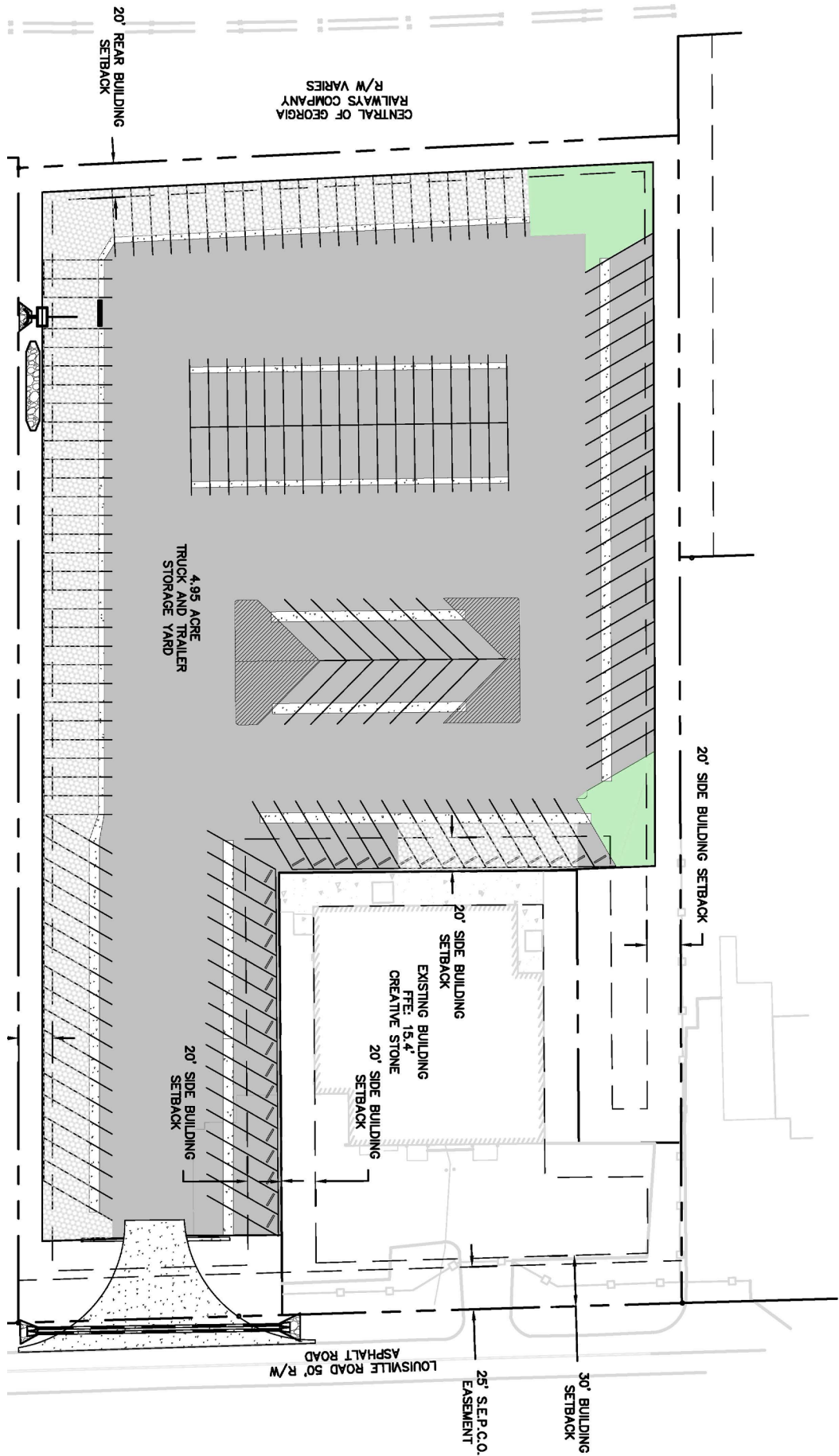
Sebastian Findlay, SIOB

Principal
Office +1 912 483 6160
Cell +1 646 287 3849
sebastian.findlay@colliers.com

Colliers | Savannah

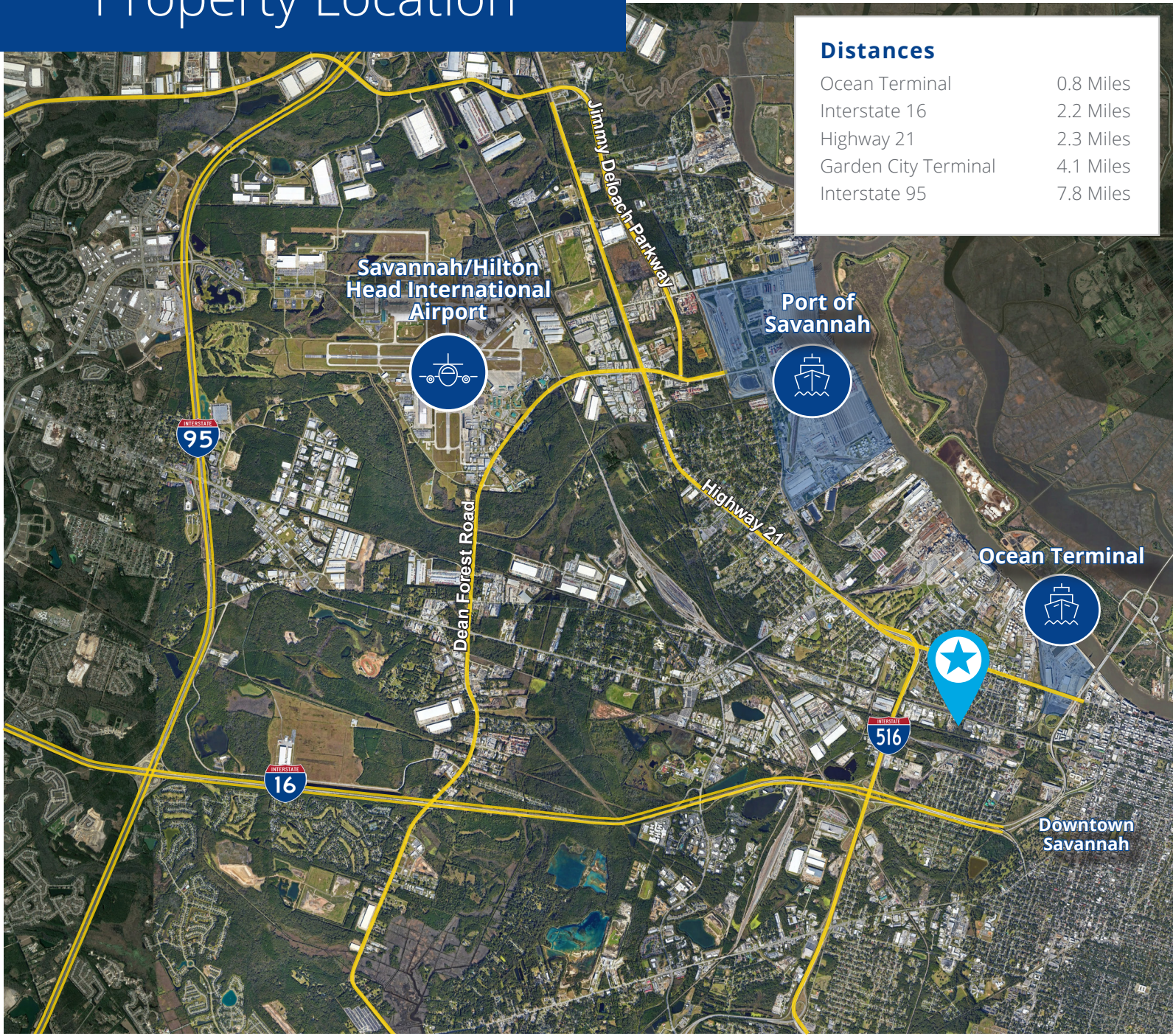
545 E York Street
Savannah, GA 31401
Main: +1 912 233 7111
colliers.com/savannah

Site Plan





Property Location



Distances

Ocean Terminal	0.8 Miles
Interstate 16	2.2 Miles
Highway 21	2.3 Miles
Garden City Terminal	4.1 Miles
Interstate 95	7.8 Miles

Contact

Sebastian Findlay, SIOR

Principal
Office +1 912 483 6160
Cell +1 646 287 3849
sebastian.findlay@colliers.com

Colliers | Savannah

545 E. York Street, Savannah, GA
+1 912 233 7111
colliers.com/savannah



This document has been prepared by Colliers International for advertising and general information only. Colliers International makes no guarantees, representations or warranties of any kind, expressed or implied, regarding the information including, but not limited to, warranties of content, accuracy and reliability. Any interested party should undertake their own inquiries as to the accuracy of the information. Colliers International excludes unequivocally all inferred or implied terms, conditions and warranties arising out of this document and excludes all liability for loss and damages arising there from. This publication is the copyrighted property of Colliers International and/or its licensor(s). ©2024. All rights reserved.