



## 61046 Twentynine Palms Hwy

Joshua Tree, California 92252

### Property Highlights

- Fronts of 29 Palms Highway
- 20,000 cars per day traffic count
- Excellent signage
- Near largest Marine base in the world with 12,500 marines
- 7 miles from Copper Mountain College
- Near Joshua Tree National Park with 2,500,000 visitors each year

### Property Description

400 SF Office Building and 600 SF Warehouse on 1/2 Acre of Land



For more information

**Ted Zwicker**

O: 310.806.6139

tzwicker@naicapital.com | CalDRE #00328370

For Sale

# 61046 Twentynine



**Ted Zwicker**

310.806.6139

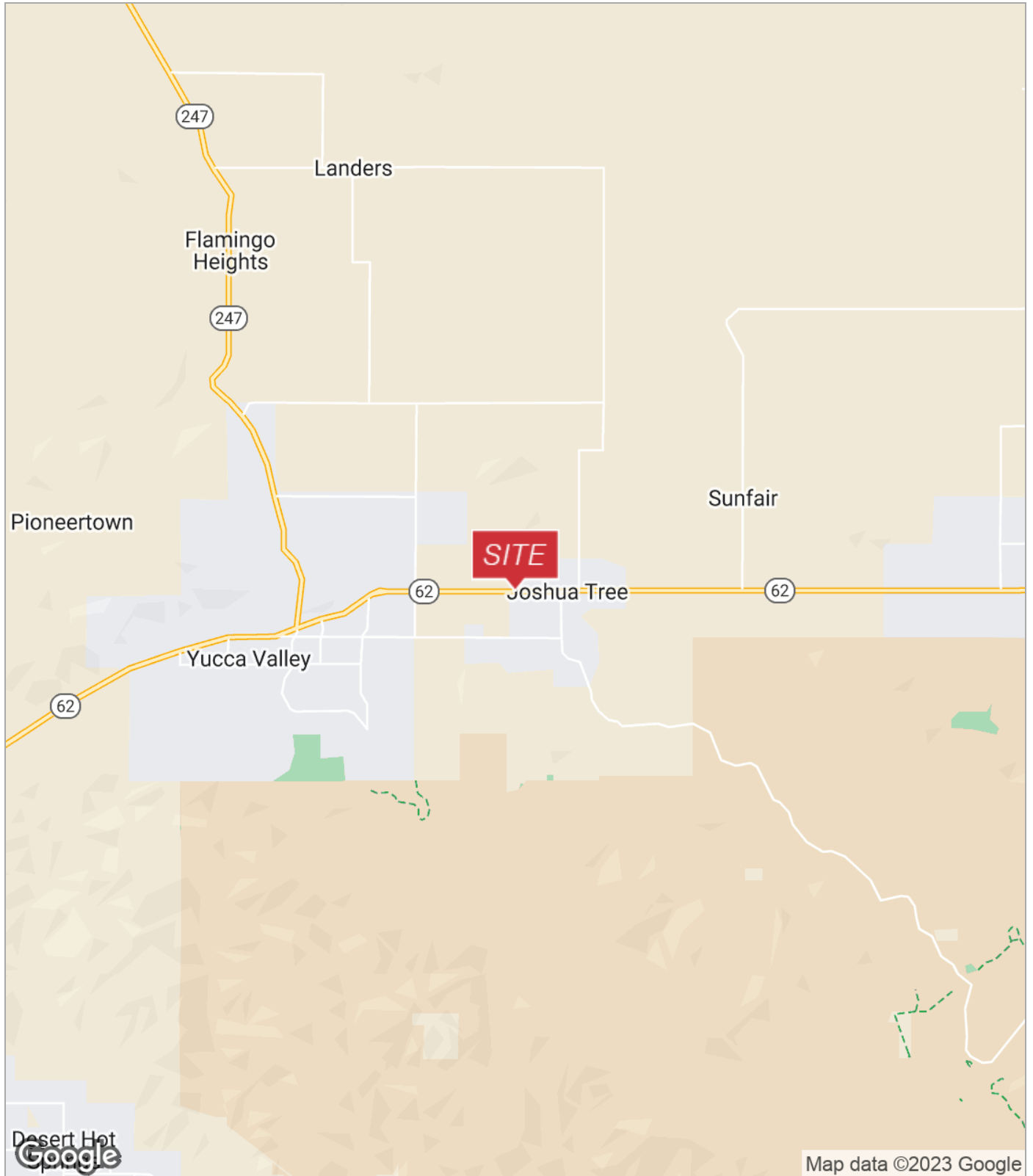
[tzwicker@naicapital.com](mailto:tzwicker@naicapital.com)

CalDRE #00328370

**NAI**Capital  
COMMERCIAL REAL ESTATE SERVICES, WORLDWIDE

For Sale

# 61046 Twentynine



**Ted Zwicker**

310.806.6139

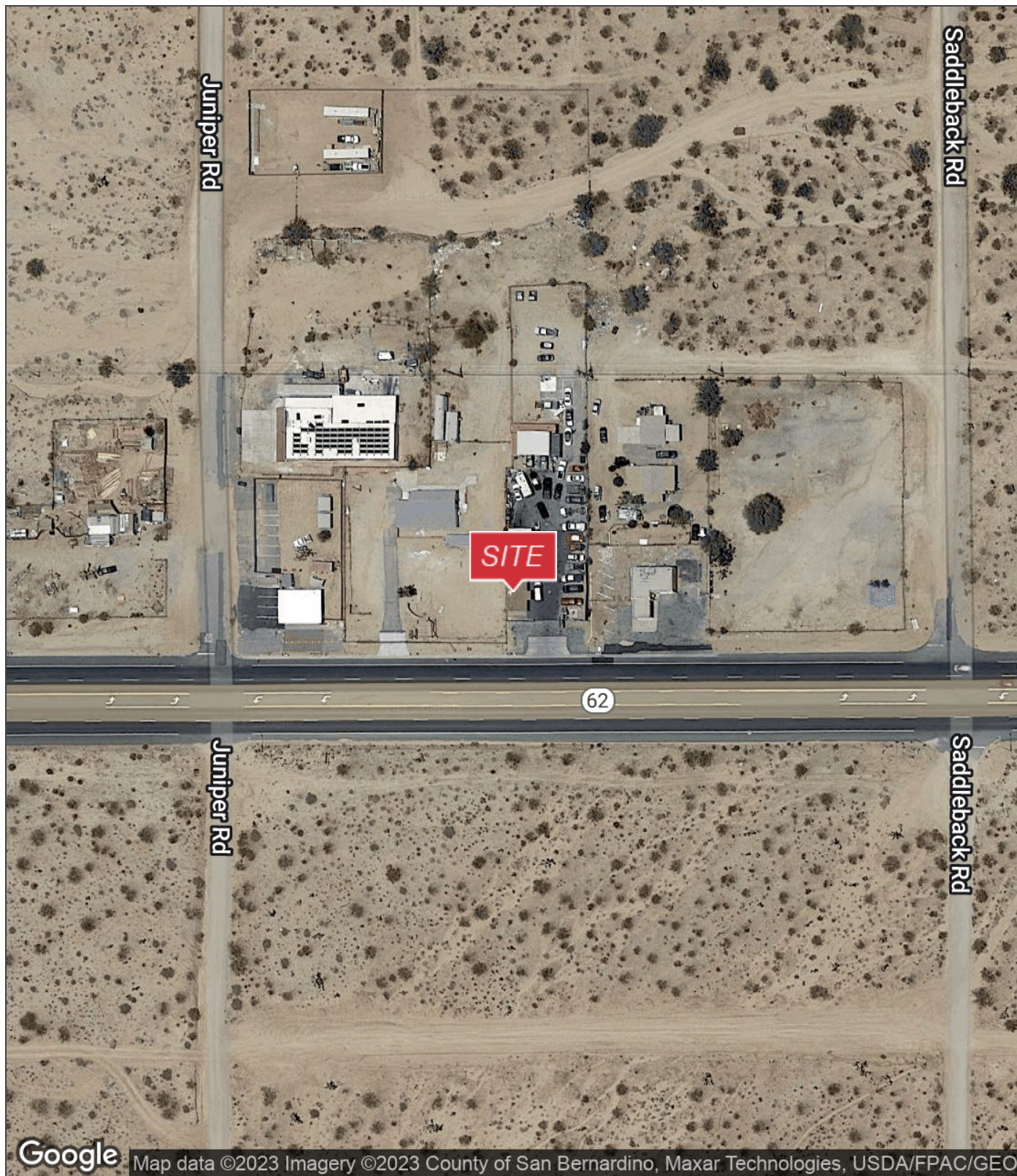
[tzwicker@naicapital.com](mailto:tzwicker@naicapital.com)

CalDRE #00328370



For Sale

# 61046 Twentynine



**Ted Zwicker**  
310.806.6139  
tzwicker@naicapital.com  
CalDRE #00328370