



FOR LEASE
CREATIVE OFFICE AND WORKSHOP IN POTRERO HILL

150 Mississippi St.
San Francisco, CA

JAY CAHAN
+1 415 865 6102
jcahan@hcmcommercial.com
CA License No. 01005130



150 Mississippi St.

San Francisco, CA

SIZE

± 12,997 square feet

ZONING

UMU (Urban Mixed Use)

AVAILABLE

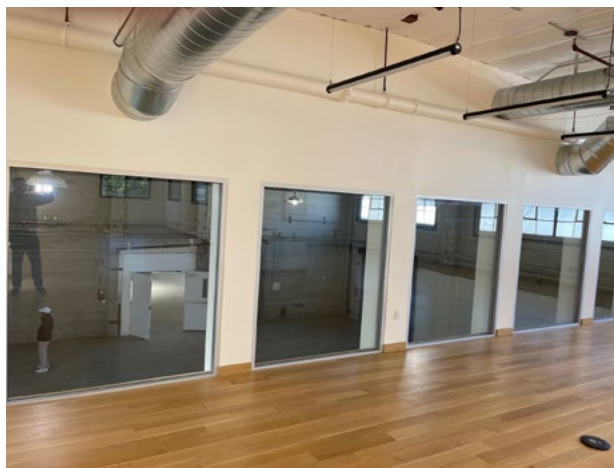
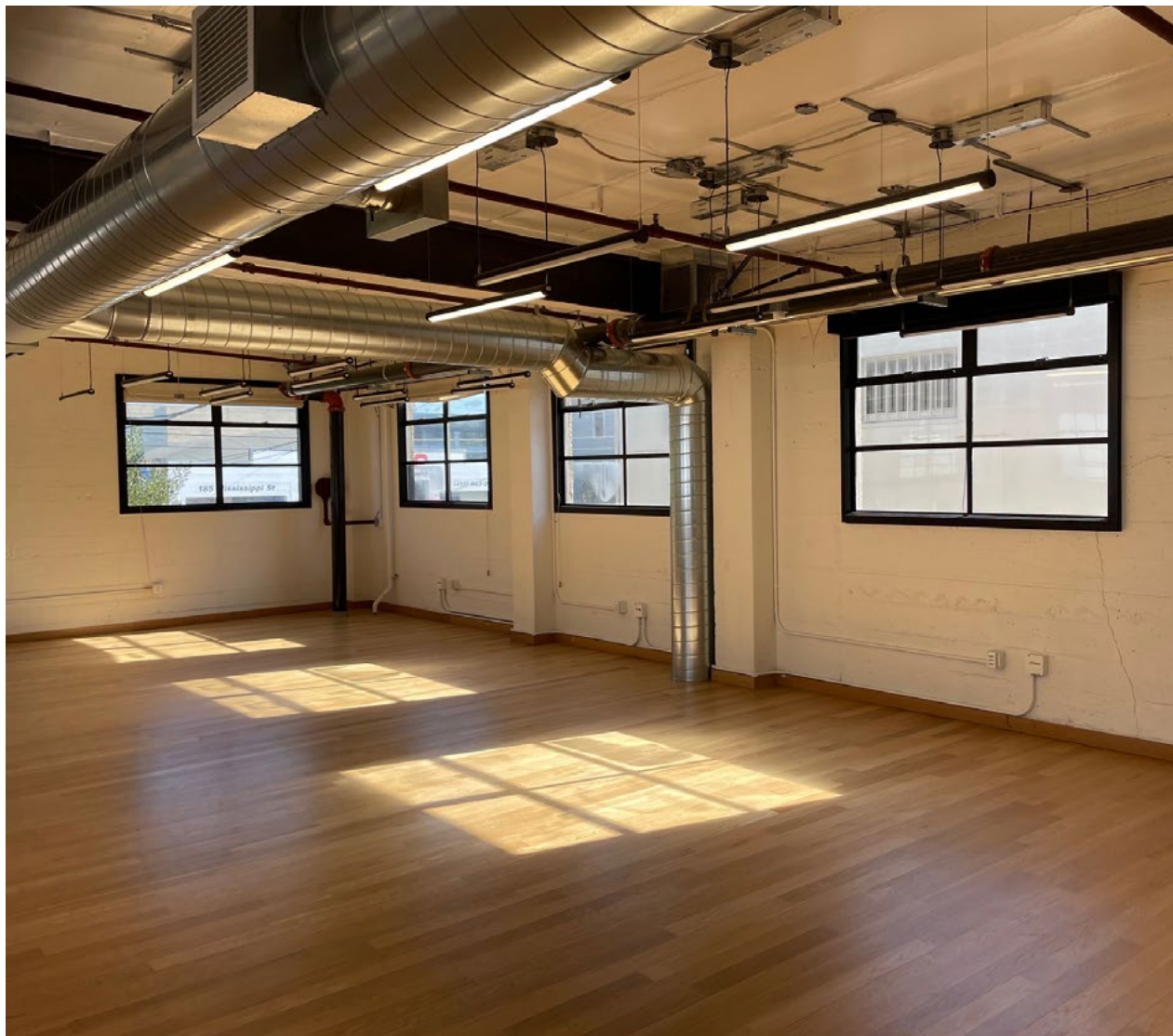
Now

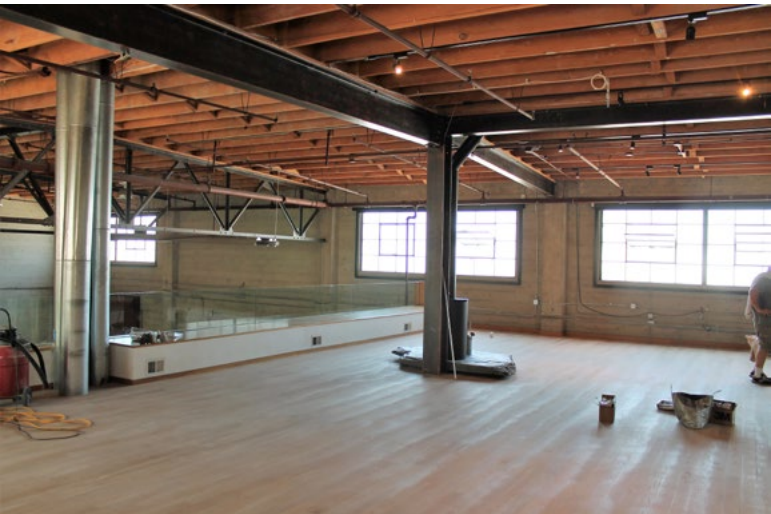
LEASE RATE

\$52 psf/annum, IG

FEATURES

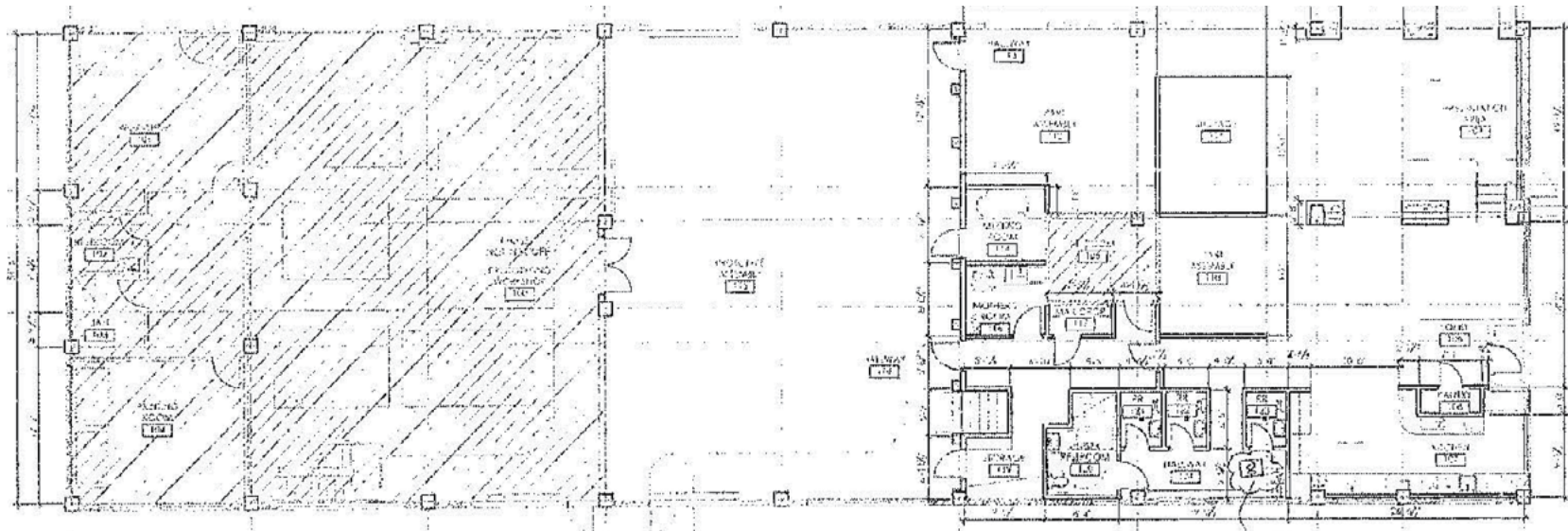
- Highly creative, office and workshop space
- Secured tandem parking along building
- Fully Air Conditioned
- Multiple roll-up doors
- Heavy Power
- Title 24 Lighting throughout
- Dedicated workshop space
- Kitchenette
- Excellent natural light
- Vaulted beam ceilings and skylights
- Bike locker
- Recently renovated with over \$5M in Tenant Improvements



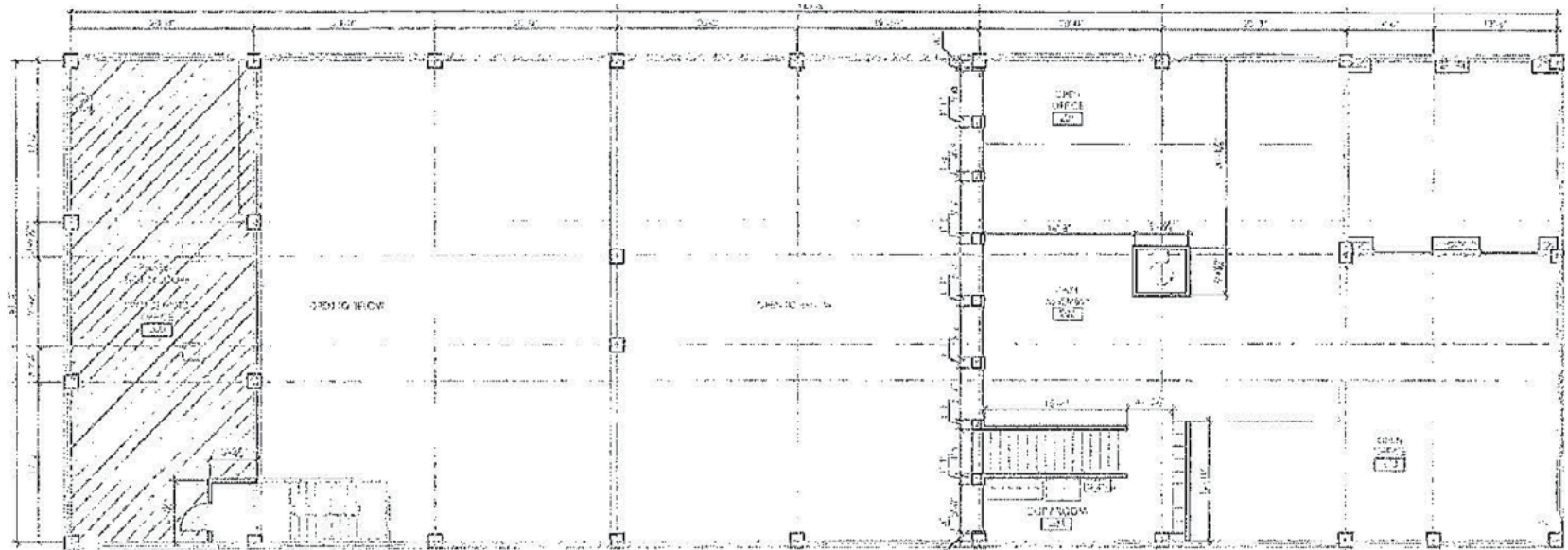


FLOOR PLAN

150 Mississippi Street, San Francisco, CA



Ground Floor



Second Floor