

# ALLTECH CENTER - SPACE FOR LEASE

## 9300 Broken Arrow Expressway, Tulsa, OK 74145

**BAUER**  
& ASSOCIATES  
REALTORS®



## PROPERTY HIGHLIGHTS

**BAUER & ASSOCIATES, REALTORS**  
Office: 918-665-1210

- **SPACE AVAILABLE:** SUITE B (3,280 sf) | SUITE C (3,936 sf)
- BROKEN ARROW EXPRESSWAY FRONTAGE - HIGH VISIBILITY
- 109,751 VEHICLES PER DAY ON B.A. EXPY (INCOG 2024)
- LOCATED ALONG SERVICE ROAD FRONTING EXPRESSWAY
- PROFESSIONAL BUILDING DESIGN WITH FLEX SPACE
- EXTERIOR SIGNAGE PERMITTED
- STOREFRONT PARKING



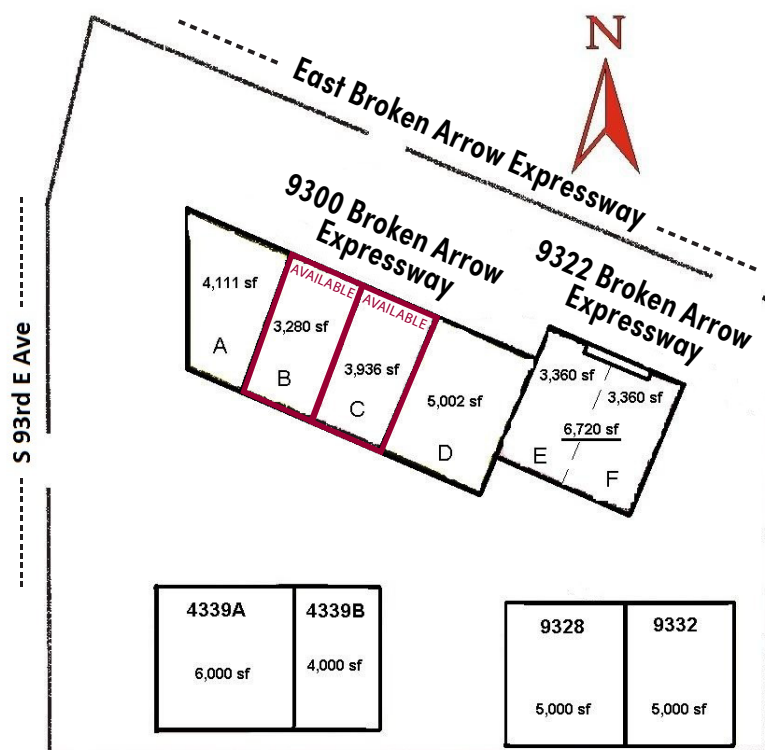
109,751 Vehicles per day - Broken Arrow Expressway  
13,256 Vehicles per day - S. Mingo Road

TRAFFIC COUNT - SOURCE INCOG 2024



	1 MILE	3 MILES	5 MILES
POPULATION	8,977	97,353	242,326
HOUSEHOLDS	3,789	39,540	101,342
AVERAGE HH INCOME	\$58,324	\$71,935	\$93,160

DEMOGRAPHICS - SOURCE ESRI 2025



**BAUER & ASSOCIATES, REALTORS®**  
"A LEADER IN TULSA COMMERCIAL REAL ESTATE SINCE 1979"  
Commercial - Industrial - Investment Property - Property Management

6846 S. Canton Ave., Suite 100, Tulsa, OK 74136  
All statements herein are for information purposes only and are believed to be reliable; however, no warranty or representation is made as to the accuracy thereof and the same is submitted subject to errors, omissions, change of price, terms, conditions and prior sale or lease.

Office 918-665-1210  
Fax 918-665-6462  
[www.bauertulsa.com](http://www.bauertulsa.com)



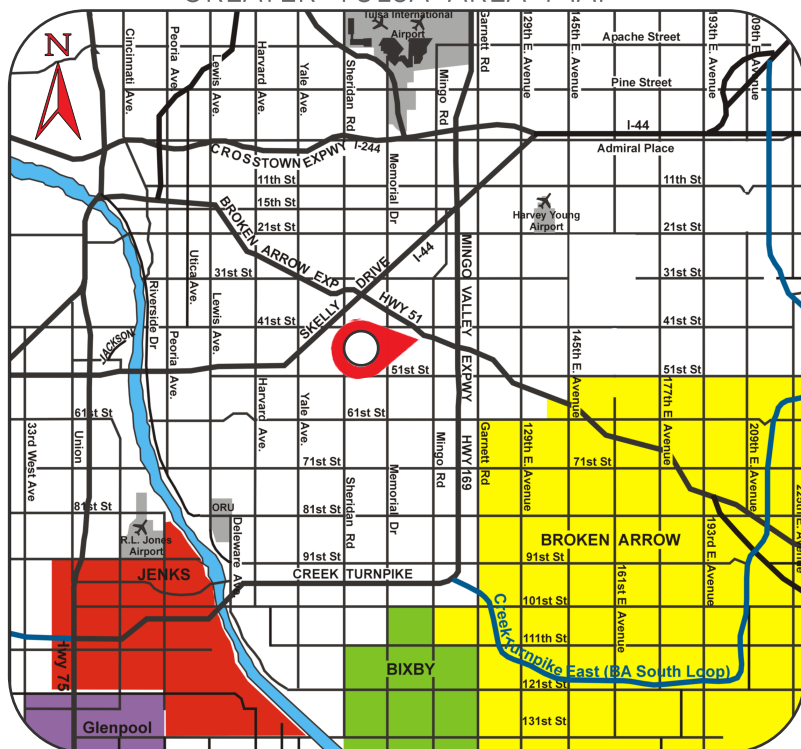
# ALLTECH CENTER - SPACE FOR LEASE

## 9300 Broken Arrow Expressway, Tulsa, OK 74145

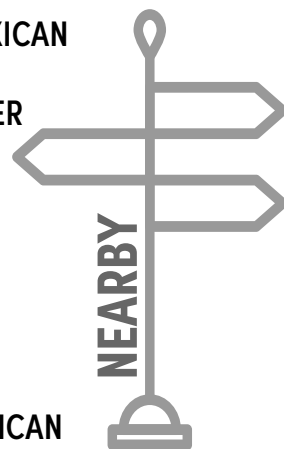
**BAUER  
& ASSOCIATES  
REALTORS®**



### GREATER TULSA AREA MAP



- GARDNER'S USED BOOKS & COMICS
- ROBERTSON TIRE
- SUBWAY
- MAMA LENCHA MEXICAN
- MOM'S FAMILY DINER
- POPEYES
- LOWE'S
- HIBDON TIRES PLUS
- SENOR FAJITAS MEXICAN



**BAUER & ASSOCIATES, REALTORS®**  
 "A LEADER IN TULSA COMMERCIAL REAL ESTATE SINCE 1979"  
 Commercial - Industrial - Investment Property - Property Management

**BAUER & ASSOCIATES, REALTORS**  
 Office: 918-665-1210  
 info@bauertulsa.com  
 www.bauertulsa.com