

FOR LEASE > RETAIL SPACE

SAKURA CROSSING

235-243 SOUTH SAN PEDRO | LOS ANGELES, CA



For more information, please contact:

GABE KADOSH | Vice President | Lic. 01486779 | +1 213 861 3386 | gabe.kadosh@colliers.com

KENT BUTLER | Vice President | Lic. 02041579 | +1 213 861 3349 | kent.butler@colliers.com

Colliers International | 865 South Figueroa Street, Suite 3500 | Los Angeles, CA 90017 | +1 213 627 1214 main | www.COLLIERS.com



about the property



SAKURA CROSSING, LITTLE TOKYO

Sakura Crossing is a mixed-use project built by Equity Residential. It is located on the southeast corner of San Pedro Street and 2nd Street, with retail spaces located on both San Pedro Street and 2nd Street. Sakura Crossing is a six-story building consisting of 230 apartments directly above and located in densely populated block with people from over 1,500 apartment units and numerous offices and retail spaces within walking distance

- **Space Available:**
 - 245 S San Pedro - Retail (i.e. juice/coffee): ±600 SF
- **Rent:** \$4.00/SF modified gross
- **Tenant Delivery Date:** Available Now

For more information, please contact:

GABE KADOSH | Vice President | Lic. 01486779 | +1 213 861 3386 | gabe.kadosh@colliers.com

KENT BUTLER | Vice President | Lic. 02041579 | +1 213 861 3349 | kent.butler@colliers.com

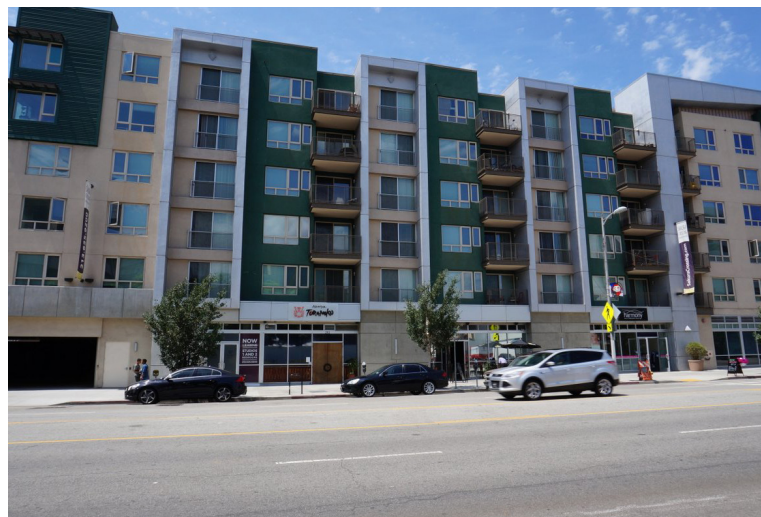
Colliers International | 865 South Figueroa Street, Suite 3500 | Los Angeles, CA 90017 | +1 213 627 1214 main | www.COLLIERS.com

Colliers International makes no guarantees, representations or warranties of any kind, expressed or implied, regarding the information including, but not limited to, warranties of content, accuracy and reliability. This publication is the copyrighted property of Colliers International and/or its licensor(s). 2020. All rights reserved.





sakura crossing - property photos



For more information, please contact:

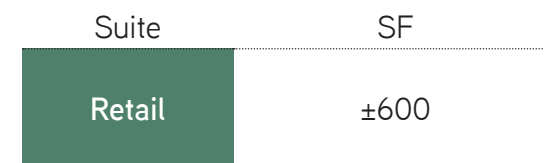
GABE KADOSH | Vice President | Lic. 01486779 | +1 213 861 3386 | gabe.kadosh@colliers.com

KENT BUTLER | Vice President | Lic. 02041579 | +1 213 861 3349 | kent.butler@colliers.com

Colliers International | 865 South Figueroa Street, Suite 3500 | Los Angeles, CA 90017 | +1 213 627 1214 main | www.COLLIERS.com

Colliers International makes no guarantees, representations or warranties of any kind, expressed or implied, regarding the information including, but not limited to, warranties of content, accuracy and reliability. This publication is the copyrighted property of Colliers International and/or its licensor(s). 2020. All rights reserved.

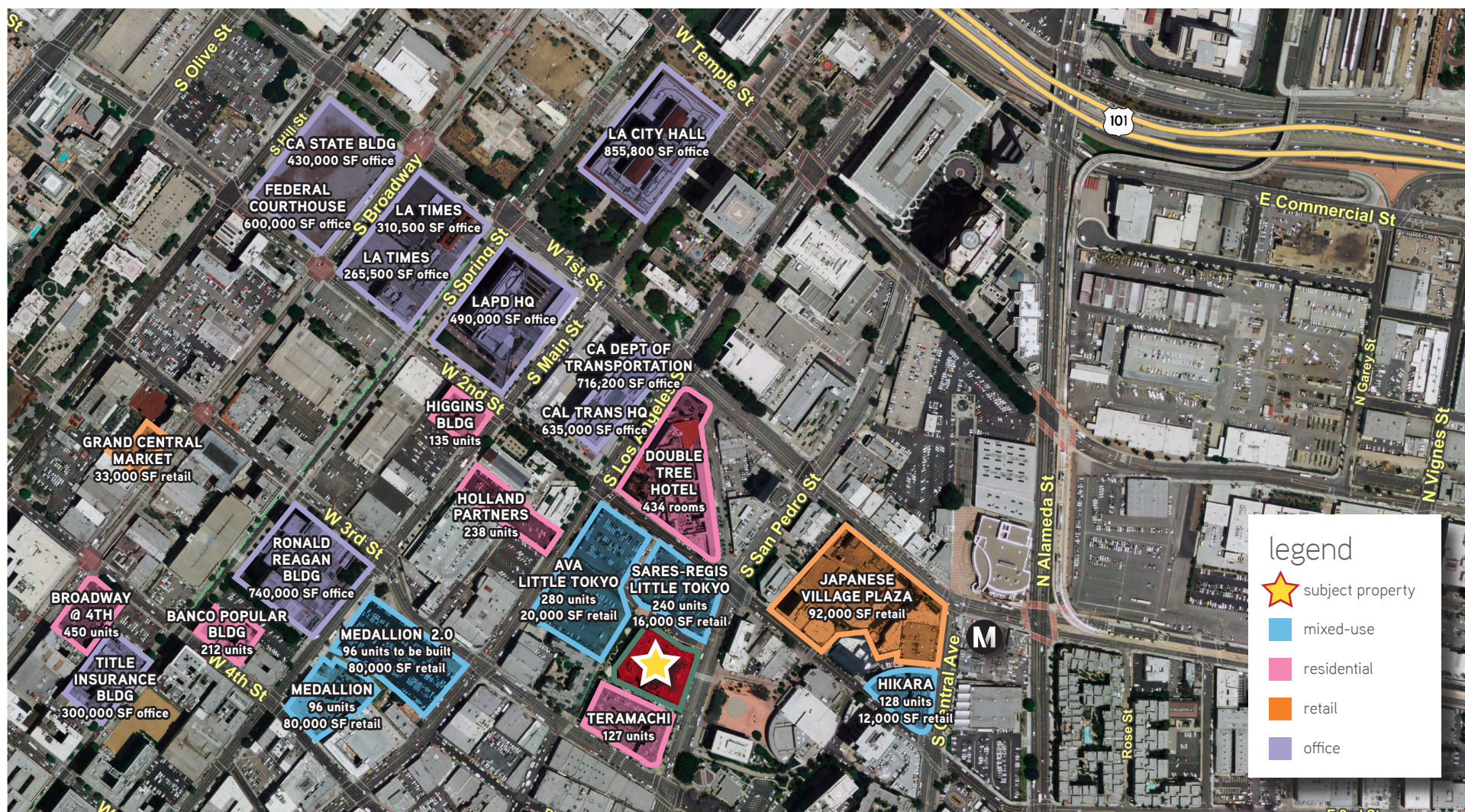




SAKURA CROSSING | page 4



surrounding area



For more information, please contact:

GABE KADOSH | Vice President | Lic. 01486779 | +1 213 861 3386 | gabe.kadosh@colliers.com

KENT BUTLER | Vice President | Lic. 02041579 | +1 213 861 3349 | kent.butler@colliers.com

Colliers International | 865 South Figueroa Street, Suite 3500 | Los Angeles, CA 90017 | +1 213 627 1214 main | www.COLLIERS.com

Colliers International makes no guarantees, representations or warranties of any kind, expressed or implied, regarding the information including, but not limited to, warranties of content, accuracy and reliability. This publication is the copyrighted property of Colliers International and/or its licensor(s). 2020. All rights reserved.





market overview



LITTLE TOKYO, CALIFORNIA

Little Tokyo is located in the heart of Downtown Los Angeles. It is comprised of roughly five large city blocks, bounded on the west by Los Angeles Street, on the east by Alameda Street, on the south by 3rd Street, and on the north by 1st Street. The Little Tokyo neighborhood in Los Angeles is one of the country’s most important Asian-American communities, maintaining its culture over many generations.

Currently, Little Tokyo is undergoing tremendous growth and development and emerging as one of Southern California’s most hip and popular cultural areas.

With the growth and continued revitalization of nearby Downtown Los Angeles, the walkable areas, proximity to public transit and the Los Angeles Metro Line, and the construction of the new Regional Connector, the location of Little Tokyo has made it a highly desired place to live, work, and visit.

DEMOGRAPHICS <i>(source: Claritas)</i>			
	1-mile	3-mile	5-mile
POPULATION			
2024 Projection	54,286	488,250	1,284,230
2019 Estimate	50,773	470,482	1,245,645
2010 Census	40,314	437,642	1,187,958
2000 Census	27,996	432,522	1,195,102
Growth 2019-2024	6.92%	3.78%	3.10%
Growth 2010-2019	22.56%	7.50%	4.86%
Growth 2000-2010	47.98%	1.18%	-0.60%
POPULATION BY RACE			
White Alone	17,482	179,875	491,167
Black or African American Alone	10,428	28,885	85,928
American Indian and Alaska Native Alone	443	5,301	13,212
Asian Alone	12,928	76,573	177,686
Native Hawaiian and Other Pacific Islander Alone	69	526	1,270
Some Other Race Alone	4,176	156,265	421,675
Two or More Races	2,132	20,647	53,742
HOUSEHOLD INCOME			
2019 Estimated Average Household Income	\$75,280.42	\$59,783.39	\$64,192.51
2019 Estimated Median Household Income	\$38,298.75	\$37,168.94	\$41,483.13

There are over 1,500 residential apartment units that will bring thousands of residents to the area. The surrounding neighbors include the LAPD headquarters located directly across the street, the new Los Angeles courthouse to be completed shortly, and the popular grocery stores Trader Joe’s and Whole Foods have committed to new space nearby.



For more information, please contact:
GABE KADOSH | Vice President | Lic. 01486779 | +1 213 861 3386 | gabe.kadosh@colliers.com
KENT BUTLER | Vice President | Lic. 02041579 | +1 213 861 3349 | kent.butler@colliers.com
Colliers International | 865 South Figueroa Street, Suite 3500 | Los Angeles, CA 90017 | +1 213 627 1214 main | www.COLLIERS.com
 Colliers International makes no guarantees, representations or warranties of any kind, expressed or implied, regarding the information including, but not limited to, warranties of content, accuracy and reliability. This publication is the copyrighted property of Colliers International and/or its licensor(s). 2020. All rights reserved.

For more information, please contact:

GABE KADOSH

Vice President

Lic. 01486779

+1 213 861 3386

gabe.kadosh@colliers.com

KENT BUTLER

Vice President

Lic. 01486779

+1 213 861 3349

kent.butler@colliers.com



Colliers International

865 South Figueroa Street

Suite 3500

Los Angeles, CA 90017

+1 213 627 1214 main

www.COLLIERS.com