

FOR LEASE

Suite 202

8401 NE Halsey St
Portland, OR 97220

James Gillespie
Oregon Principal Broker
(503) 890-5775
jimgillespie@kw.com

EXECUTIVE SUMMARY

KW Commercial-Portland Central is pleased to offer the opportunity to lease this recently renovated office space. The Halsey Plaza has a great corner location, with walking distance from several Portland Tri-Met bus stops. The Gateway neighborhood has many restaurants and retail shops. The property has its own parking lot. Many recent building upgrades.



LEASE OVERVIEW

Address	8401 NE Halsey Street
Suite	202
Lease Rate	\$18.50 PSF
Lease Type	Full service
Office Size	1,410 RSF
Available	Now
Market	Gateway Area
Term	Minimum 3 Year Lease

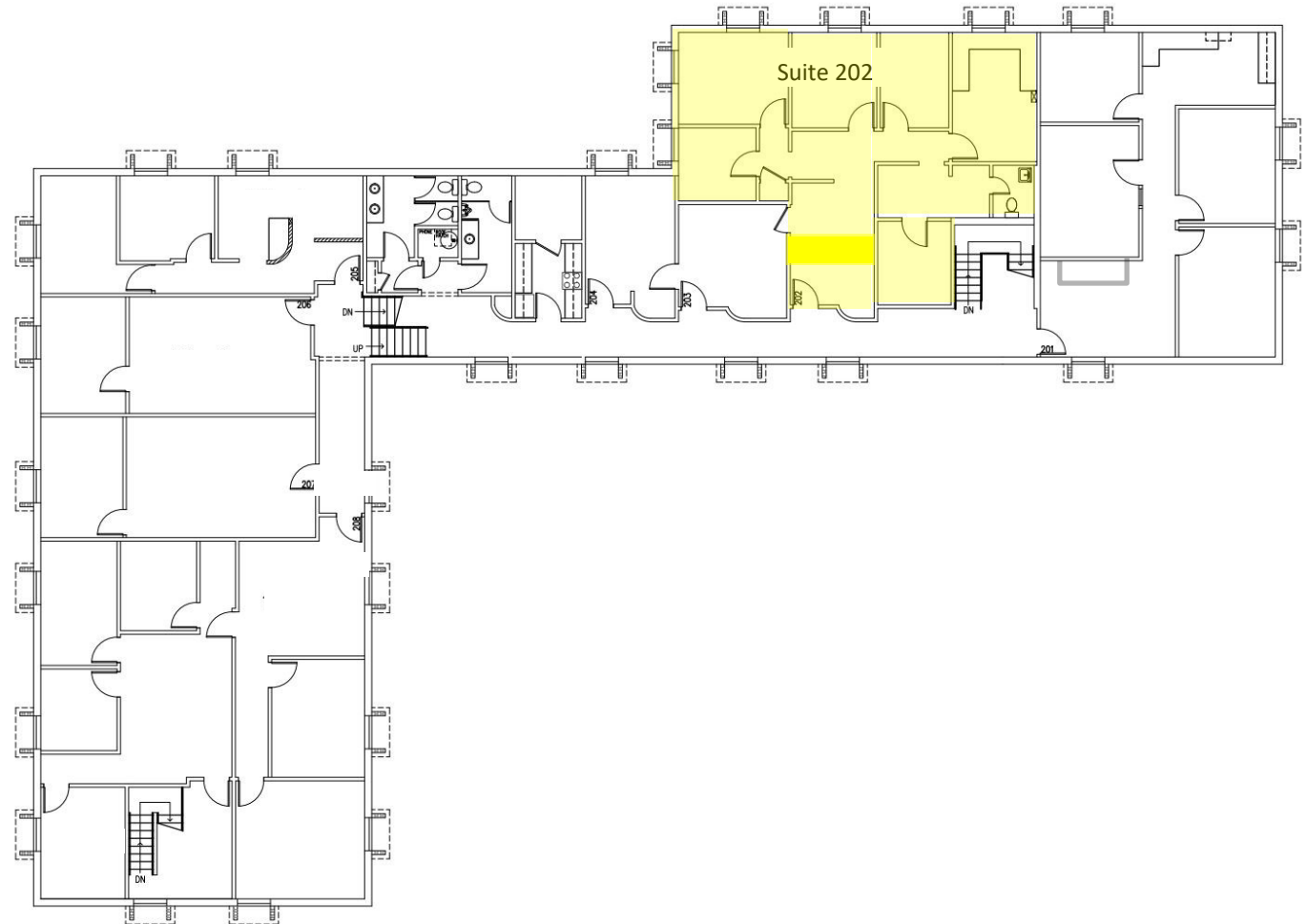
HALSEY PLAZA
8401 NE HALSEY ST, PORTLAND, OR 97220

FOUNDATION COMMERCIAL GROUP
LEASING, SALES, VALUATIONS

KW COMMERCIAL

FLOOR PLAN

- Common Kitchen
- Building Security System
- \$150,000 of building improvements in the last two years. Including new roof, HVAC system and lighting
- Available NOW



HALSEY PLAZA
8401 NE HALSEY ST, PORTLAND, OR 97220

FOUNDATION COMMERCIAL GROUP
LEASING, SALES, VALUATIONS

KW COMMERCIALSM

FEATURES



- Office space in the Gateway District.
- Exposed brick brings forth character and a warm atmosphere.
- Natural lighting from many windows
- Access to an outdoor courtyard
- Located on NE 84th Avenue and NE Halsey Street
- Large parking lot front and back
- This area has a nice mix of urban diversity with a funky feel and Portland's sense of individuality
- Portland's TriMet bus stop and MAX light rail service station area block away



HALSEY PLAZA
8401 NE HALSEY ST, PORTLAND, OR 97220

FOUNDATION COMMERCIAL GROUP
LEASING, SALES, VALUATIONS

KW COMMERCIALSM

An aerial map of the NE Halsey St area in Portland, OR. A red rectangle highlights a building at 801 NE Halsey St, labeled 'HALSEY PLAZA'. The map shows surrounding streets including NE Schuyler St, NE Broadway, NE Halsey St, NE 82nd Ave, NE 84th Ave, NE 86th Ave, NE 88th Ave, NE 90th Ave, NE 91st Ave, NE Clackamas St, NE Wasco St, NE Multnomah St, and NE Hassalo St. The I-84 Highway is visible at the bottom. Various landmarks and businesses are labeled, such as University of Western States, Banfield Pet Hospital, Portland Animal Welfare Team, Days Inn by Wyndham Portland Central, Drive Away Hunger (Portland...), Kite Hill, Fred Meyer Fuel Center, United Rentals - Trench Safety, Condon-Johnson & Associates, McTear's Tile and Remodel, Bobby's Auto Sales, Jiffy Lube, Road Trip Oregon, Eastern Cathay, KC Halsey Collision Center, Utopia Restaurant & Lounge, ROSE CITY AUTOMOTIVE, Pappy's Bar & Grill, and Comfort Inn. A red pin is placed on the building at 801 NE Halsey St.

8401 NE HALSEY ST, PORTLAND, OR 97220

FOUNDATION  **COMMERCIAL GROUP**
LEASING, SALES, VALUATIONS



HALSEY PLAZA

8401 NE HALSEY STREET
PORTLAND, OR 97220

Exclusively Listed By:

James Gillespie

Foundation Commercial Group
KW Commercial-Portland Central
Oregon Principal Broker
(503) 890-5775
jimgillespie@kw.com

Confidentiality & Disclaimer:

All materials and information received or derived from KW Commercial-Portland Central its directors, officers, agents, advisors, affiliates and/or any third party sources are provided without representation or

warranty as to completeness, veracity, or accuracy, condition of the property, compliance or lack of compliance with applicable governmental requirements, developability or suitability, financial performance of the property, projected financial performance of the property for any party's intended use or any and all other matters.

Neither KW Commercial-Portland Central its directors, officers, agents, advisors, or affiliates makes any representation or warranty, express or implied, as to accuracy or completeness of the any materials or

information provided, derived, or received. Materials and information from any source, whether written or verbal, that may be furnished for review are not a substitute for a party's active conduct of its own due diligence to determine these and other matters of significance to such party. KW Commercial-Portland Central will not investigate or verify any such matters or conduct due diligence for a party unless otherwise agreed in writing.

EACH PARTY SHALL CONDUCT ITS OWN INDEPENDENT INVESTIGATION AND DUE DILIGENCE.

Any party contemplating or under contract or in escrow for a transaction is urged to verify all information and to conduct their own inspections and investigations including through appropriate third party independent professionals selected by such party. All financial data should be verified by the party including by obtaining and reading applicable documents and reports and consulting appropriate independent professionals. KW Commercial-Portland Central makes no warranties and/or representations regarding the veracity, completeness, or relevance of any financial data or assumptions. KW Commercial-Portland Central does not serve as a financial advisor to any party regarding any proposed transaction.

All data and assumptions regarding financial performance, including that used for financial modeling purposes, may differ from actual data or performance. Any estimates of market rents and/or projected rents that may be provided to a party do not necessarily mean that rents can be established at or increased to that level. Parties must evaluate any applicable contractual and governmental limitations as well as market conditions, vacancy factors and other issues in order to determine rents from or for the property. Legal questions should be discussed by the party with an attorney. Tax questions should be discussed by the party with a certified public accountant or tax attorney. Title questions should be discussed by the party with a title officer or attorney. Questions regarding the condition of the property and whether the property complies with applicable governmental requirements should be discussed by the party with appropriate engineers, architects, contractors, other consultants and governmental agencies. All properties and services are marketed by Keller Williams Realty-Portland Central in compliance with all applicable fair housing and equal opportunity laws.

KELLER WILLIAMS REALTY PORTLAND CENTRAL
919 NE 19TH AVENUE, SUITE 100, PORTLAND, OR 97232
Each Office is independently owned and operated



COMMERCIALSM

