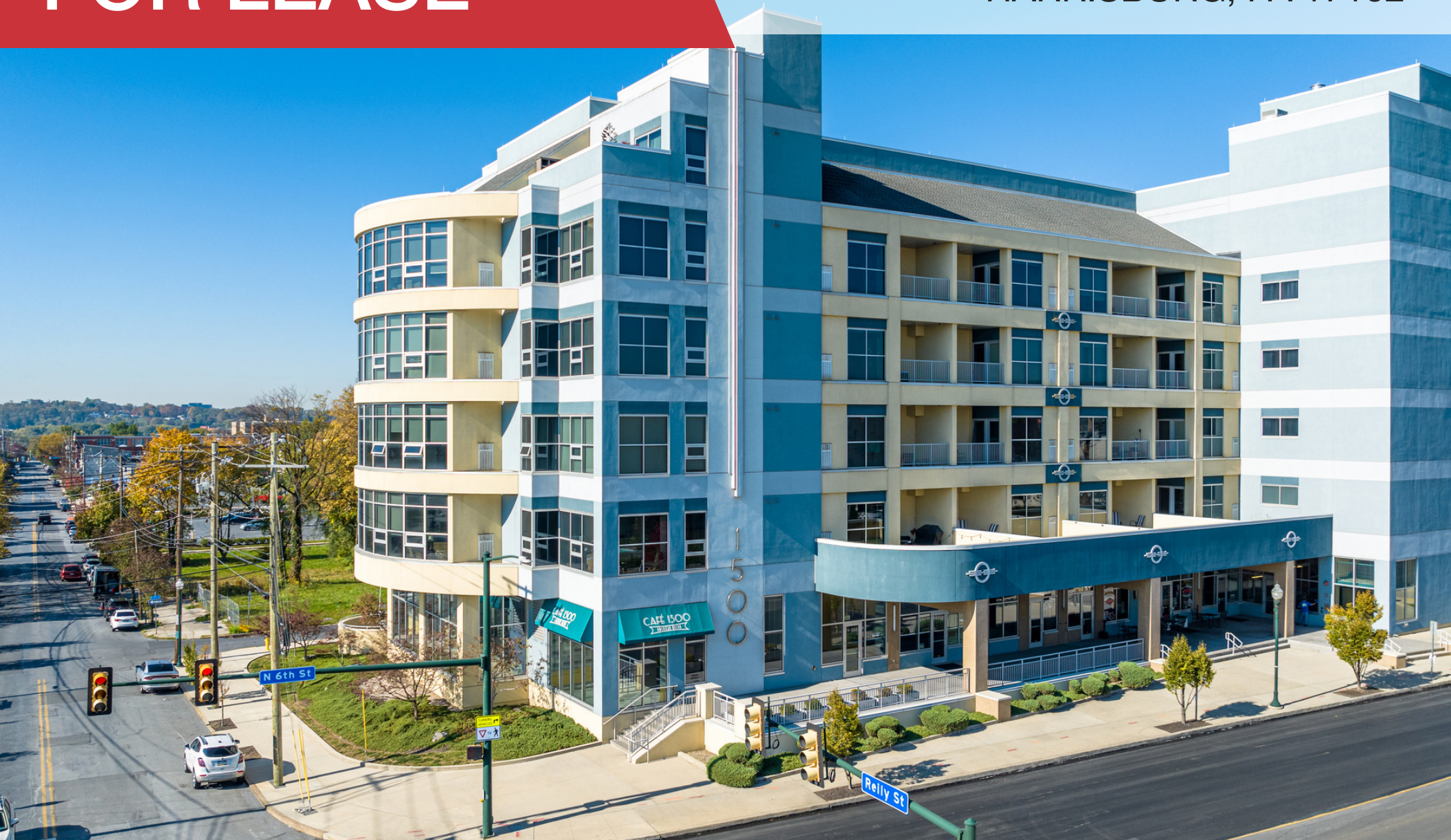



RETAIL SPACE
FOR LEASE

1500 N 6TH ST
HARRISBURG, PA 17102



Casey Khuri
ckhuri@naicir.com | 717 761 5070

Nik Sgagias
nsgagias@naicir.com | 717 761 5070

 1015 Mumma Road
Lemoyne, PA 17043
circommercial.com

NAICIR

Information concerning this offering comes from sources deemed reliable, but no warranty is made as to the accuracy thereof, and it is submitted subject to errors, omissions, change of price or other conditions, prior sale or lease, or withdrawal without notice. All sizes approximate. PA License #RB024320A

1500 N 6TH ST

PROPERTY DETAILS

FOR LEASE

CONTACT AGENT

OFFERING SUMMARY

Lease Rate	Contact Agent
Available SF	1,626 SF
Building Size	100,944 SF

PROPERTY SUMMARY

Address	1500 N 6th Street, Harrisburg, PA 17102
Municipality	City of Harrisburg
County	Dauphin County
Year Built	2012

PROPERTY DESCRIPTION

Suite 107, 1,626 SF, currently built out as a fitness studio. Perfect for small retail users who would benefit from tenant-base within the 43 unit residential condominium. Located within the Midtown neighborhood, which offers a growing residential community and businesses, including Federal Courthouse, Pennsylvania State Archives and Catherine Hershey School for Learning. Located in the Midtown Neighborhood, this property is within walking distance of the State Capitol Complex, Strawberry Square and Downtown Harrisburg's Restaurant Row. Short drive to I-81/Route 322 interchange.

PROPERTY HIGHLIGHTS

- Midtown Harrisburg's marquee mixed-use complex, The 1500 Condominium
- Covered loggias with private, outdoor seating
- Pedestrian traffic from residential tenants, Midtown residents and nearby businesses
- Prime location in fast-growing N. 6th Street corridor of Midtown Neighborhood

UTILITIES & ZONING

Zoning	Commercial Neighborhood
Water & Sewer	Public



Casey Khuri

ckhuri@naicir.com | 717 761 5070

Nik Sgagias

nsgagias@naicir.com | 717 761 5070

Information concerning this offering comes from sources deemed reliable, but no warranty is made as to the accuracy thereof, and it is submitted subject to errors, omissions, change of price or other conditions, prior sale or lease, or withdrawal without notice. All sizes approximate. PA License #RB024320A



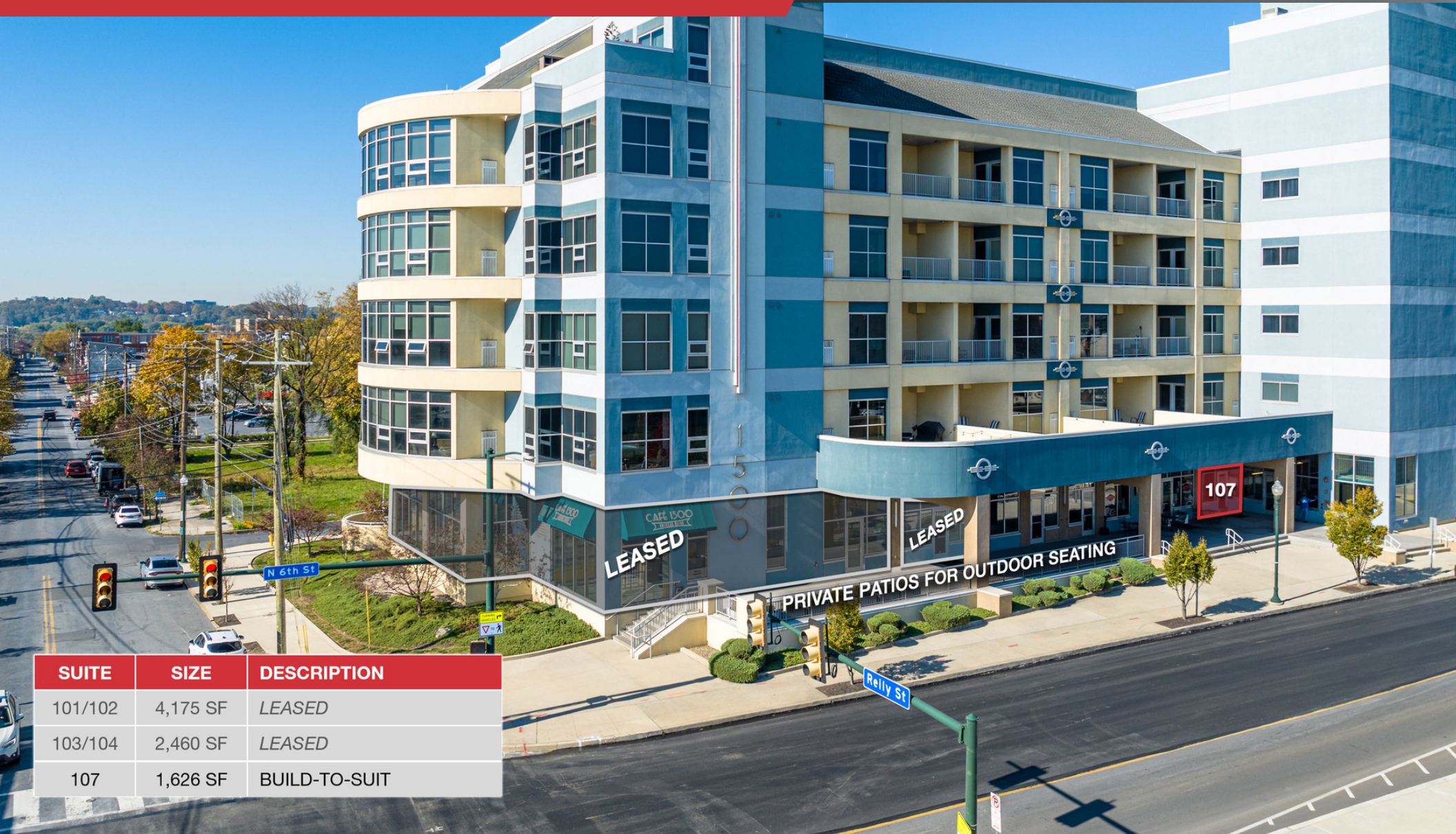
1015 Mumma Road
Lemoyne, PA 17043
circommercial.com

NAICIR

1500 N 6TH ST

ADDITIONAL PHOTOS

FOR LEASE
CONTACT AGENT



SUITE	SIZE	DESCRIPTION
101/102	4,175 SF	LEASED
103/104	2,460 SF	LEASED
107	1,626 SF	BUILD-TO-SUIT

Casey Khuri

ckhuri@naicir.com | 717 761 5070

Nik Sgagias

nsgagias@naicir.com | 717 761 5070

Information concerning this offering comes from sources deemed reliable, but no warranty is made as to the accuracy thereof, and it is submitted subject to errors, omissions, change of price or other conditions, prior sale or lease, or withdrawal without notice. All sizes approximate. PA License #RB024320A



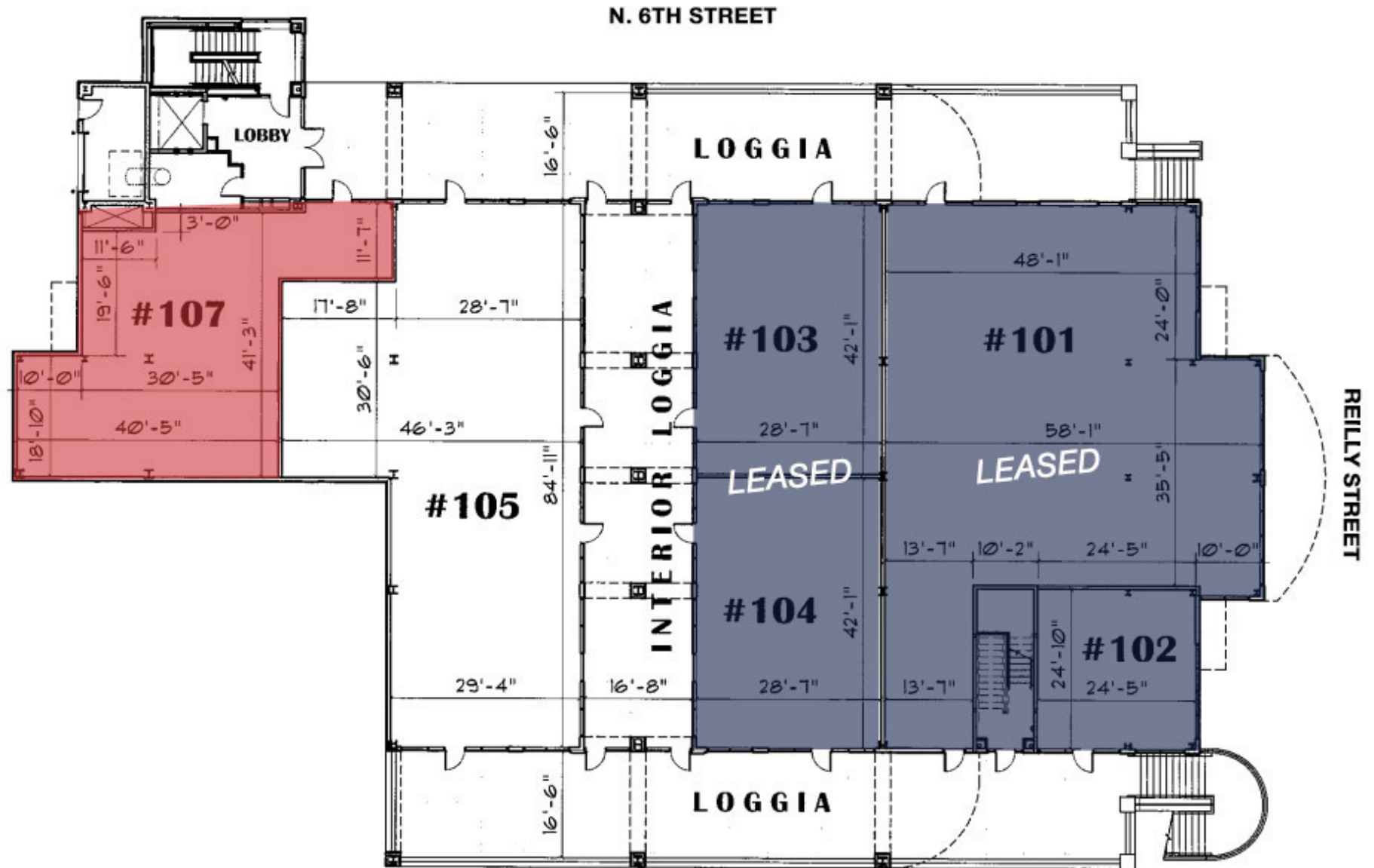
1015 Mumma Road
Lemoyne, PA 17043
circommercial.com

NAICIR

1500 N 6TH ST

FLOOR PLAN

FOR LEASE
CONTACT AGENT



Casey Khuri

ckhuri@naicir.com | 717 761 5070

Nik Sgagias

nsgagias@naicir.com | 717 761 5070

Information concerning this offering comes from sources deemed reliable, but no warranty is made as to the accuracy thereof, and it is submitted subject to errors, omissions, change of price or other conditions, prior sale or lease, or withdrawal without notice. All sizes approximate. PA License #RB024320A

1015 Mumma Road
Lemoyne, PA 17043
circommercial.com

NAICIR

1500 N 6TH ST
ADDITIONAL PHOTOS


FOR LEASE
CONTACT AGENT



Casey Khuri
ckhuri@naicir.com | 717 761 5070

Nik Sgagias
nsgagias@naicir.com | 717 761 5070

Information concerning this offering comes from sources deemed reliable, but no warranty is made as to the accuracy thereof, and it is submitted subject to errors, omissions, change of price or other conditions, prior sale or lease, or withdrawal without notice. All sizes approximate. PA License #RB024320A

 1015 Mumma Road
Lemoyne, PA 17043
circommercial.com

NAICIR

1500 N 6TH ST
ADDITIONAL PHOTOS


FOR LEASE
CONTACT AGENT



Casey Khuri
ckhuri@naicir.com | 717 761 5070

Nik Sgagias
nsgagias@naicir.com | 717 761 5070

Information concerning this offering comes from sources deemed reliable, but no warranty is made as to the accuracy thereof, and it is submitted subject to errors, omissions, change of price or other conditions, prior sale or lease, or withdrawal without notice. All sizes approximate. PA License #RB024320A

 1015 Mumma Road
Lemoyne, PA 17043
circommercial.com

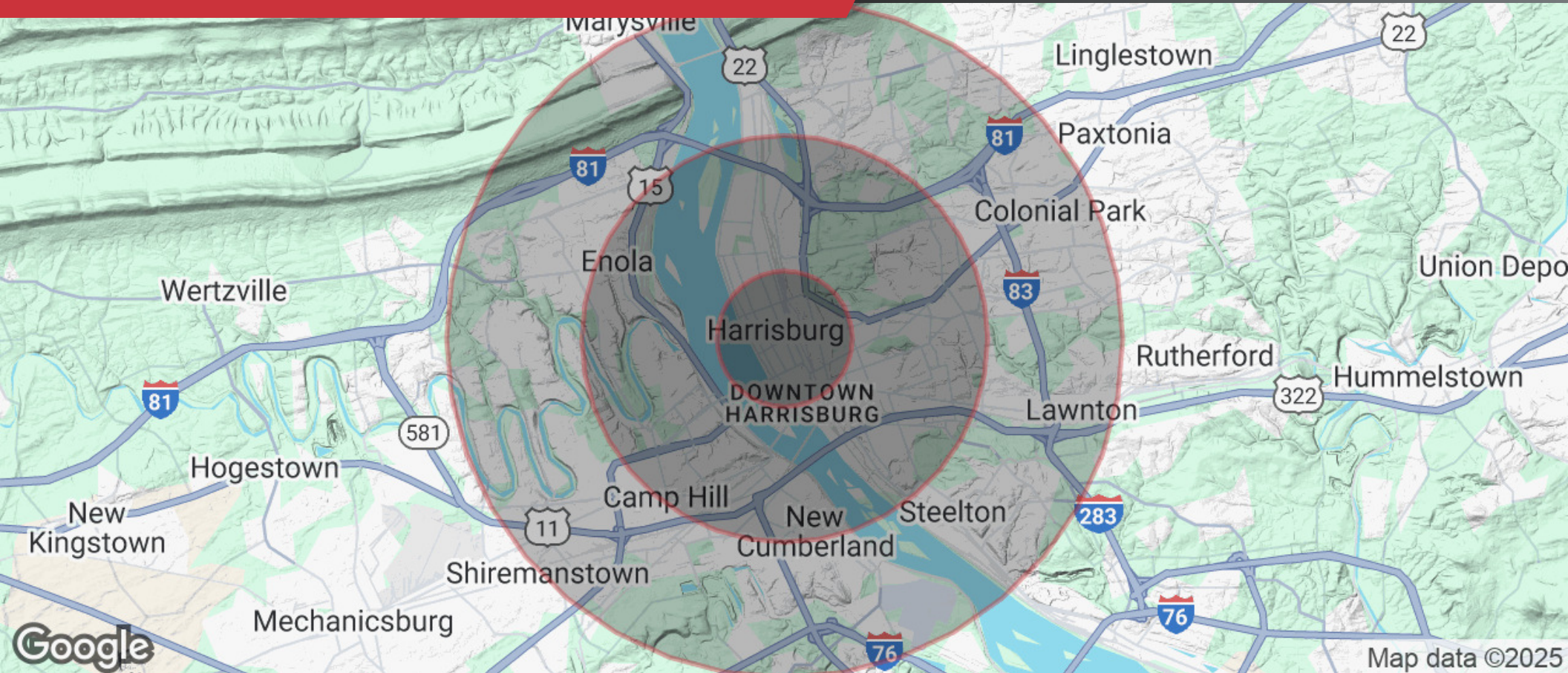
NAICIR

1500 N 6TH ST

DEMOGRAPHICS

FOR LEASE

CONTACT AGENT



POPULATION

1 MILE	3 MILES	5 MILES
14,658	92,875	190,430



HOUSEHOLDS

1 MILE	3 MILES	5 MILES
8,419	45,098	86,944



INCOME

1 MILE	3 MILES	5 MILES
\$47,825	\$59,052	\$70,416

Casey Khuri

ckhuri@naicir.com | 717 761 5070

Nik Sgagias

nsgagias@naicir.com | 717 761 5070

Information concerning this offering comes from sources deemed reliable, but no warranty is made as to the accuracy thereof, and it is submitted subject to errors, omissions, change of price or other conditions, prior sale or lease, or withdrawal without notice. All sizes approximate. PA License #RB024320A



1015 Mumma Road
Lemoyne, PA 17043
circommercial.com

NAICIR