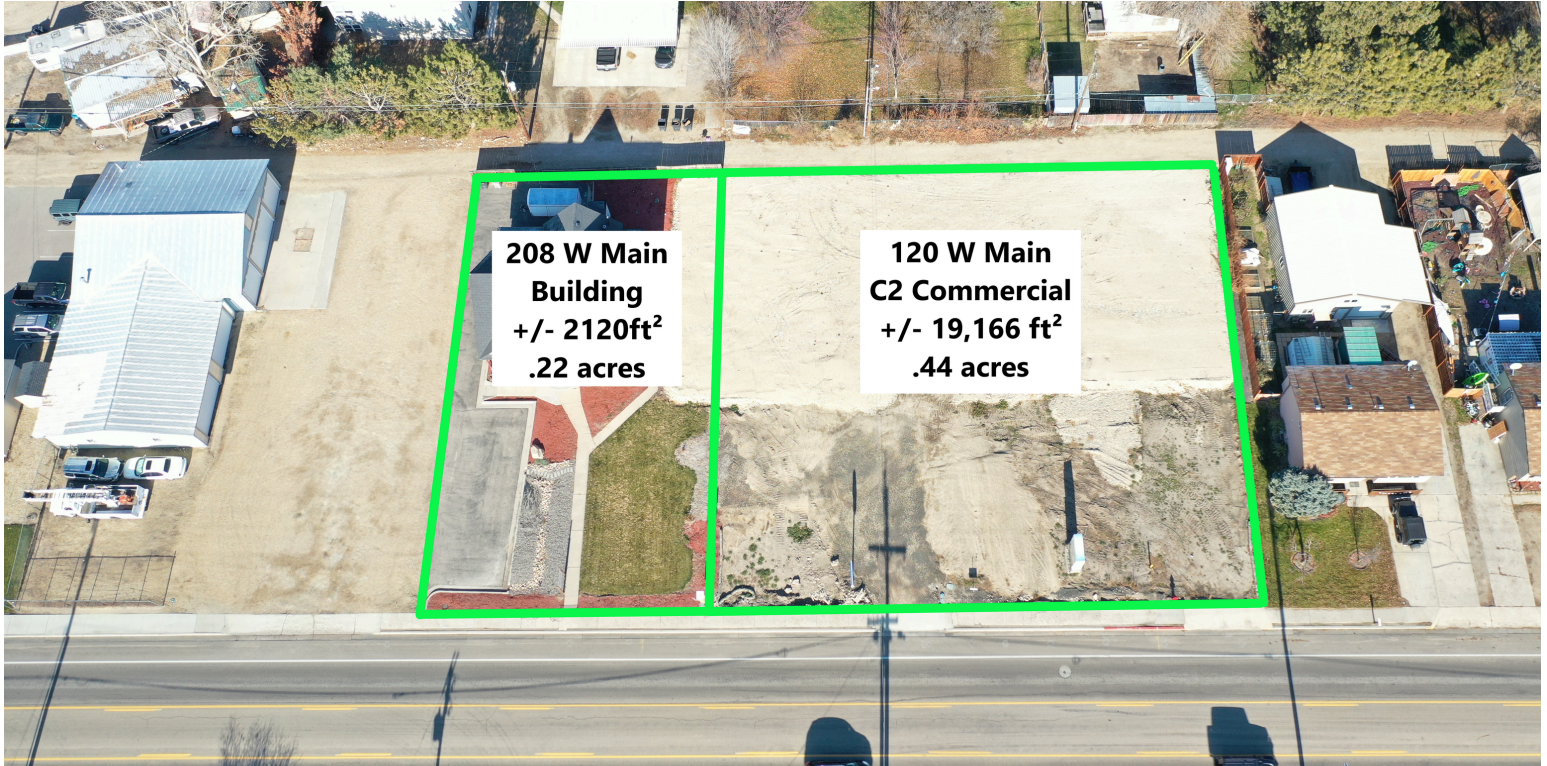


PRIME C2 COMMERCIAL BUILDING & LOT LOCATED DOWNTOWN

208 & 120 W MAIN, MIDDLETON, ID



**208 W Main
Building
+/- 2120ft²
.22 acres**

**120 W Main
C2 Commercial
+/- 19,166 ft²
.44 acres**

PROPERTY FEATURES

Prime C2 Commercial Location in Downtown Middleton! 222' of rare high visibility frontage on Main Street. Listing includes 2 properties. 120 W Main is a building lot on .44 acres. 208 W Main is on .22 acres, and has a 2,120 ft² fully renovated Victorian style building built in 1920 with a current Lease in place. No commercial CC&R's. Utilities to site. Potential C2 uses include Auto Shop, Lube Shop, Cabinet Shop, Offices, Medical, Vision, Salon, Daycare, Dry Cleaning, Pharmacy, Coffee Shop, Pawn Shop, Studios, Print Shop, Restaurant, Retail Store, Vet Clinic, Mini Storage, Bank and more. Across the street from the Middleton Community center.

208 W Main: \$475,000- 2,120 sq. ft. | 6-10 parking spaces

120 W Main: \$520,000- 0.44 Acres

Or buy both for \$995,000

WHITE BARN REAL ESTATE

Matt Wilke
Broker
208.412.9803

matt@mywhitebarn.com

April Wilke
Realtor
208.941.1839

april@mywhitebarn.com

