



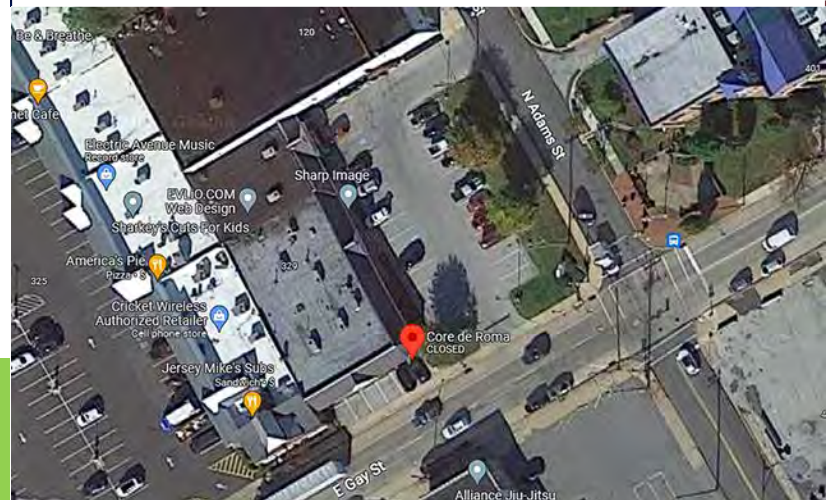
## Property Features

Three retail spaces are available for lease in Parkway Plaza, prominently located at the intersection of East Gay street and North Adams Street, across the street from the West Chester Municipal Building and Fugett Park. The building is situated on a 1.18-acre lot with parking for up to 30 vehicles.

### Available immediately:

- 3,275 SF, formerly occupied by Core de Roma restaurant
- 1,653 SF, formerly occupied by China King restaurant
- 970 SF

Map It 



## Contact

Eli Kahn, 610-563-5585

