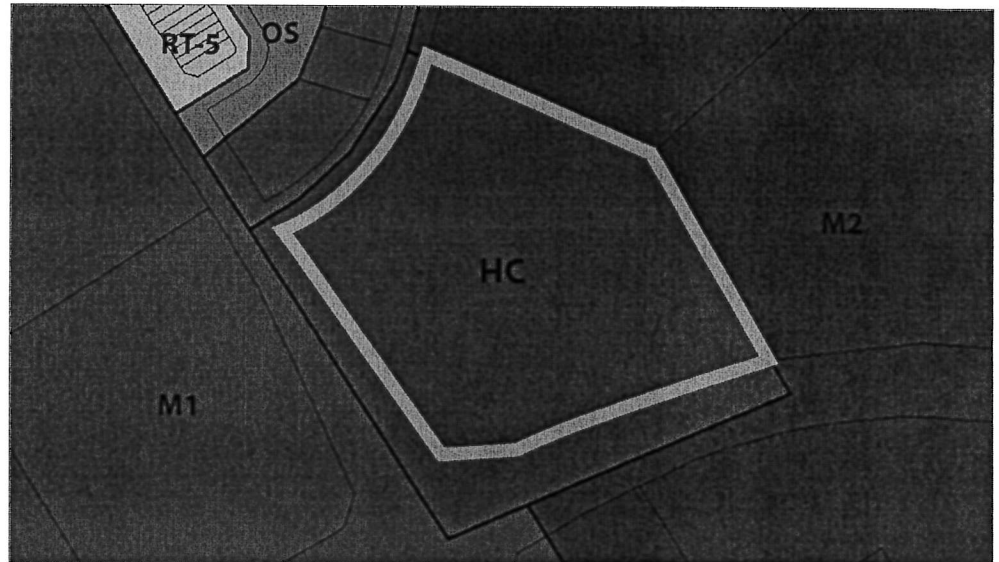




# **COMMERCIAL DEVELOPMENT OPPORTUNITY**

## **189 PILLSBURY DRIVE**



### **ZONING: Highway Commercial (HC)**

#### **QUICK FACTS:**

##### **OFFICIAL PLAN DESIGNATION:**

- Employment Area

##### **LAND SIZED:**

- Frontage: ~144.00 m
- Depth: ~164.00 m
- Area: 4.21 ha

##### **PROPERTY STATUS:**

- Undeveloped

**ASSESSMENT ROLL NUMBER**  
**4374-020-013-61060**

#### **PERMITTED USES:**

- |  |  |
|--|--|
| Adult Entertainment Parlour            | Golf Driving Range                                       |
| Adult Learning Centre                  | Hotel or Motel   |
| Animal Hospital                        | Laundromat   |
| Auction Centre                         | Liquor or Beer Store                                     |
| Automobile Body Shop                   | Marina Dry Land  |
| Automobile Car Wash                    | Medical Laboratory                                       |
| Automobile Gas Bar                     | Medical Practitioner                                     |
| Automotive Rental Agency               | Mobile Fast Food Facility                                |
| Automobile Sales Agency                | Outdoor Display and Sales Area                           |
| Automobile Service Station             | Personal Service Establishment                           |
| Builders Supply Outlet                 | Pharmacist   |
| Campground                             | Professional Office                                      |
| Commercial Entertainment Establishment | Public Hall  |
| Commercial School                      | Public Use   |
| Drive-in Theatre                       | Recreational Vehicles and Vessel Sales and Rental Agency |
| Dry Cleaning Establishment             | Rent-all Shop  |
| Eating Establishment                   | Retail Store   |
| Financial Institution                  | Service Shop   |
| Fitness Club                           | Shopping Center  |
| Funeral Home                           | Taxi Stand   |
| Garden and Nursery Supply Outlet       | Theatre  |

#### **PLANNING AND BUILDING SERVICES**

**WES CROWN, DIRECTOR**

wcrown@midland.ca (705) 526-4275 x2215

**ANGELA ZHAO, PLANNER**

azhao@midland.ca (705) 526-4275 x2214

#### **TOWN OF MIDLAND**

575 Dominion Avenue  
Midland, Ontario  
L4R 1R2

**PHONE** (705) 526-4275

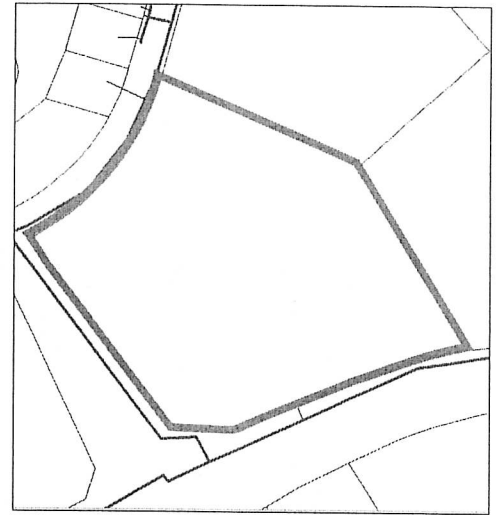
**FAX** (705) 526-9971



## 189 PILLSBURY DRIVE: SERVICING AND AIR PHOTO



■ Storm Sewer Line  
■ Sanitary Sewer Line  
■ Sanitary Sewer Lateral



■ Water Service Main  
■ Water Service Line

## 189 PILLSBURY DRIVE: SITE PHOTOS

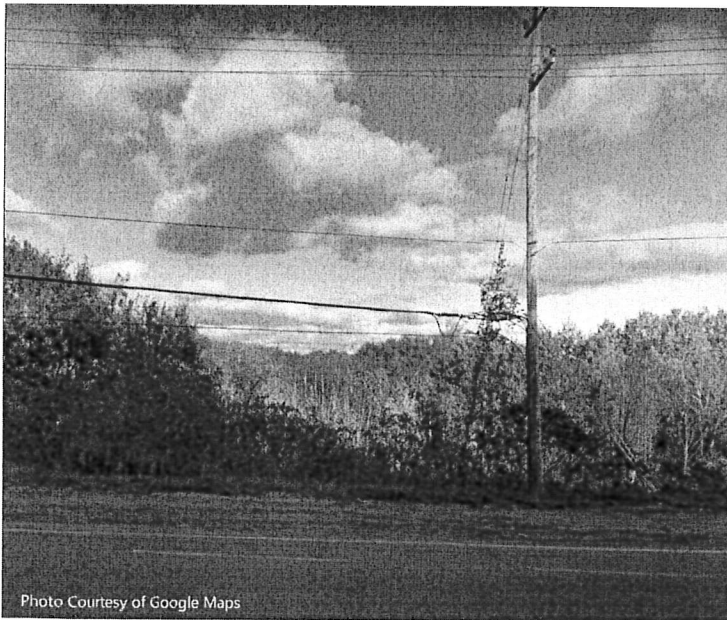


Photo Courtesy of Google Maps

View from William Street

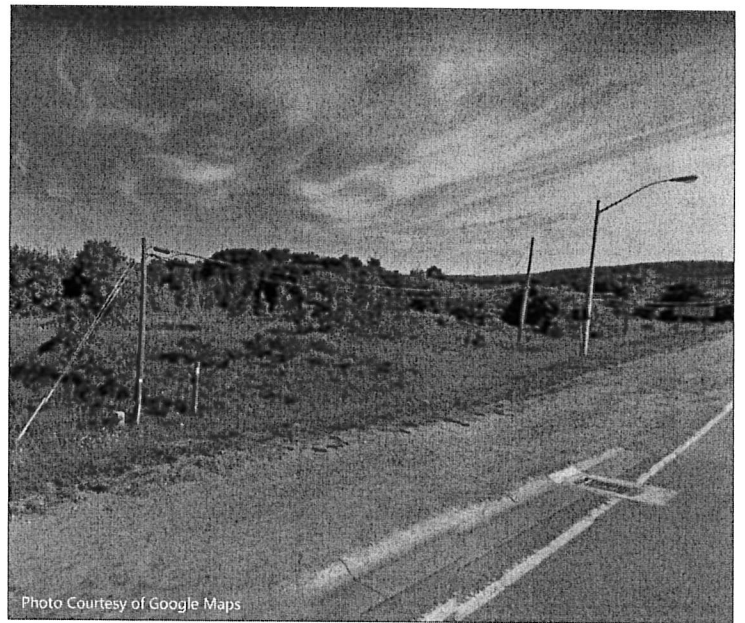


Photo Courtesy of Google Maps

View from Highway 12

### PLANNING AND BUILDING SERVICES

**Wes Crown, DIRECTOR**

wcrown@midland.ca (705) 526-4275 x2215

**ANGELA ZHAO, PLANNER**

azhao@midland.ca (705) 526-4275 x2214

### TOWN OF MIDLAND

575 Dominion Avenue

Midland, Ontario

L4R 1R2

PHONE (705) 526-4275

FAX (705) 526-9971