

LAND FOR SALE

43.96+/- Acres Available

KING Industrial
Realty, Inc.



694 Yarbrough Ridgeway Road, Maysville, GA 30558

OFFERING SUMMARY

Lot Size: 43.96 Acres
Zoning: A2

PROPERTY HIGHLIGHTS

- 1,544'+/- Feet of Frontage on Yarbrough Ridgeway Road
- 106.4+/- Adjacent Acres Available
- 3.3 Miles from SK Innovation
- 1.7 Miles from I-85
- 22 Miles to Inland Port Near Gainesville, GA
- 7 Miles North of Jefferson; Home of Multiple, Notable Manufacturing & Distribution Facilities
- 60 Miles North of Atlanta in Development Friendly Jackson County GA
- 18 Miles to FedEx Ground Facility in Braselton
- Current Zoning is A2, Future Land use is Industrial
- A Two-Day Drive From 80% of the U.S. Population



For More Information Contact:

JOWELL THOME **SIM DOUGHTIE, CCIM, SIOR, MCR, SLCR**

Sales Associate

404.942.2036

jthome@kingindustrial.com

President

404.942.2002

sdoughtie@kingindustrial.com

LAND FOR SALE

43.96+/- Acres Available

694 Yarbrough Ridgeway Road, Maysville, GA 30558

King Industrial
Realty, Inc.



Adjacent 106.4+/- Acres also For Sale

JOWELL THOME

Sales Associate

404.942.2036

jthome@kingindustrial.com

SIM DOUGHTIE, CCIM, SIOR, MCR, SLCR

President

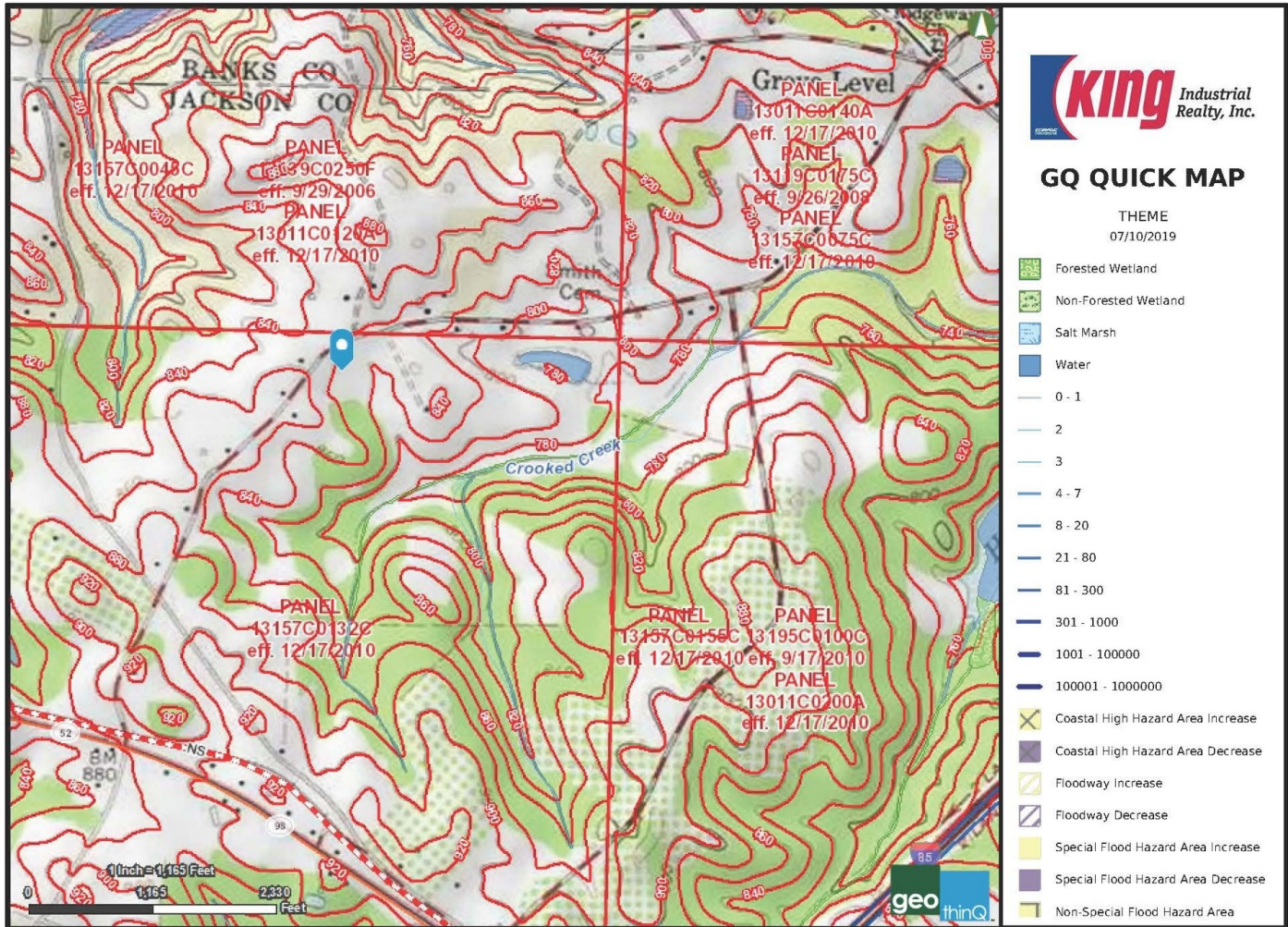
404.942.2002

sdoughtie@kingindustrial.com

LAND FOR SALE

43.96+/- Acres Available

694 Yarbrough Ridgeway Road, Maysville, GA 30558



This map was created using geothinq | www.geothinq.com | Mapping Smart Land Decisions

Topo Flood Map

For More Information Contact:

JOWELL THOME **SIM DOUGHTIE, CCIM, SIOR, MCR, SLCR**

Sales Associate

404.942.2036

jthome@kingindustrial.com

President

404.942.2002

sdoughtie@kingindustrial.com



1920 Monroe Dr., NE. Atlanta, GA 30324 • 404.942.2000 • www.kingindustrial.com

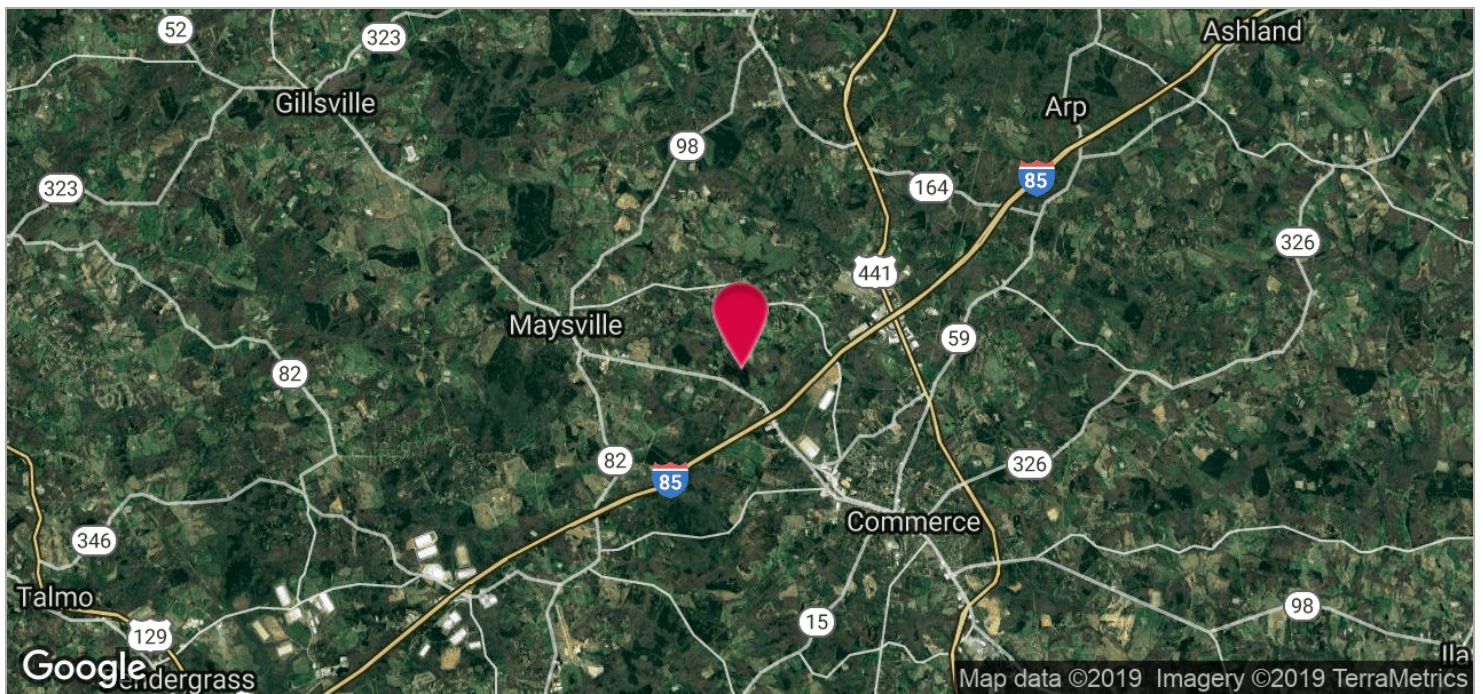
Every effort has been made to provide accurate information, but no liability is assumed for errors and omissions

LAND FOR SALE

43.96+/- Acres Available

694 Yarbrough Ridgeway Road, Maysville, GA 30558

KING Industrial
Realty, Inc.



For More Information Contact:

JOWELL THOME SIM DOUGHTIE, CCIM, SIOR, MCR, SLCR

Sales Associate

404.942.2036

jthome@kingindustrial.com

President

404.942.2002

sdoughtie@kingindustrial.com