

# RIVERDALE FREEWAY PARK

FOR LEASE



## PROPERTY DETAILS

5202 S. Freeway Park Dr., Riverdale, Utah 84405

**\$25.00/SF FULL-SERVICE**

- Full Building Availability
- 1,189–13,040 SF
- 4:1,000 parking ratio (54 stalls)
- Direct, immediate I-15 visibility
- Pole and crown signage available
- 1 minute drive to HAFB North Gate
- 5-7 minute drive to HAFB West Gate
- Interior improvements underway
- In-suite improvements available
- Immediate access to:
  - » I-15
  - » I-84
  - » Riverdale Road
  - » Hill Air Force Base

## 2025 DEMOS



### EST. POPULATION

1 MILE » **10,782**  
3 MILE » **89,932**  
5 MILE » **207,878**



### EST. HOUSEHOLDS

1 MILE » **4,118**  
3 MILE » **31,417**  
5 MILE » **72,088**



### EST. AVERAGE HH INCOME

1 MILE » **\$99,861**  
3 MILE » **\$109,830**  
5 MILE » **\$115,016**



**CHRIS FALK, CCIM, SIOR**  
cfalk@newmarkmw.com  
direct 801.499.6514  
[View Profile](#)

**BRAXTON WILLIE, CCIM**  
bwillie@newmarkmw.com  
direct 801.803.3334  
[View Profile](#)

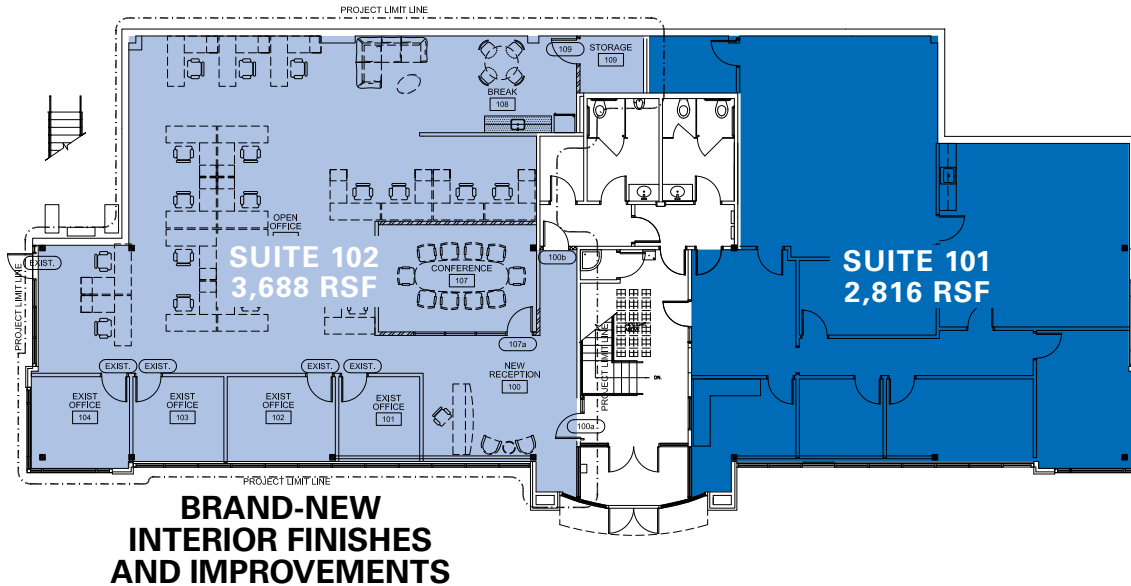
**BRANSON WOOD**  
bwood@newmarkmw.com  
direct 801.510.5207  
[View Profile](#)

**FULL SERVICE  
COMMERCIAL REAL ESTATE**  
312 East South Temple  
Salt Lake City, Utah 84111  
Office 801.456.8800  
[www.newmarkmw.com](http://www.newmarkmw.com)

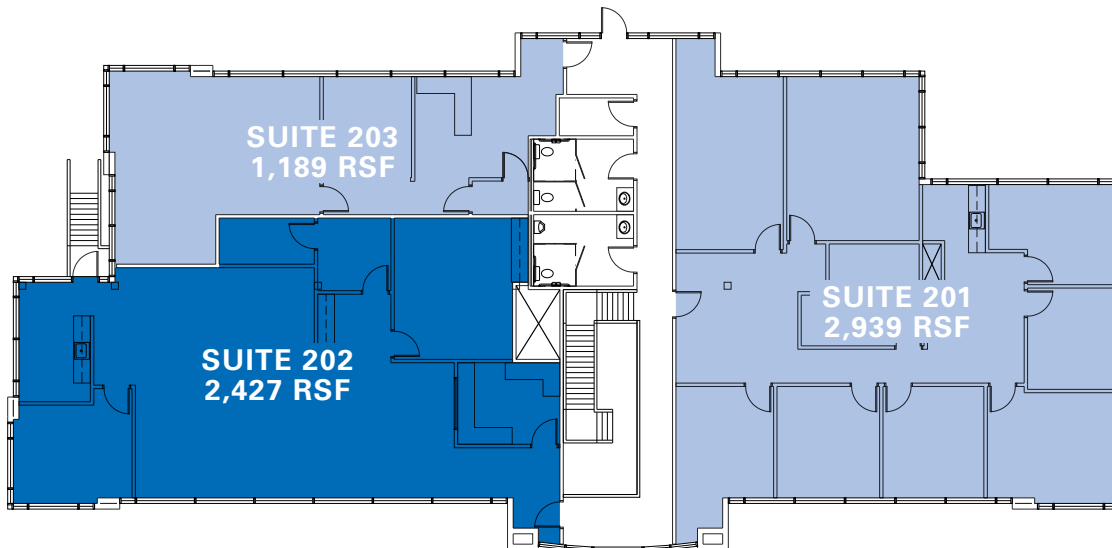
# FREEWAY PARK OFFICE

## FLOOR PLAN

### FLOOR 1



### FLOOR 2



**CHRIS FALK, CCIM, SIOR**  
cfalk@newmarkmw.com  
direct 801.499.6514  
[View Profile](#)

**BRAXTON WILLIE, CCIM**  
bwillie@newmarkmw.com  
direct 801.803.3334  
[View Profile](#)

**BRANSON WOOD**  
bwood@newmarkmw.com  
direct 801.510.5207  
[View Profile](#)

**FULL SERVICE  
COMMERCIAL REAL ESTATE**  
312 East South Temple  
Salt Lake City, Utah 84111  
Office 801.456.8800  
[www.newmarkmw.com](http://www.newmarkmw.com)

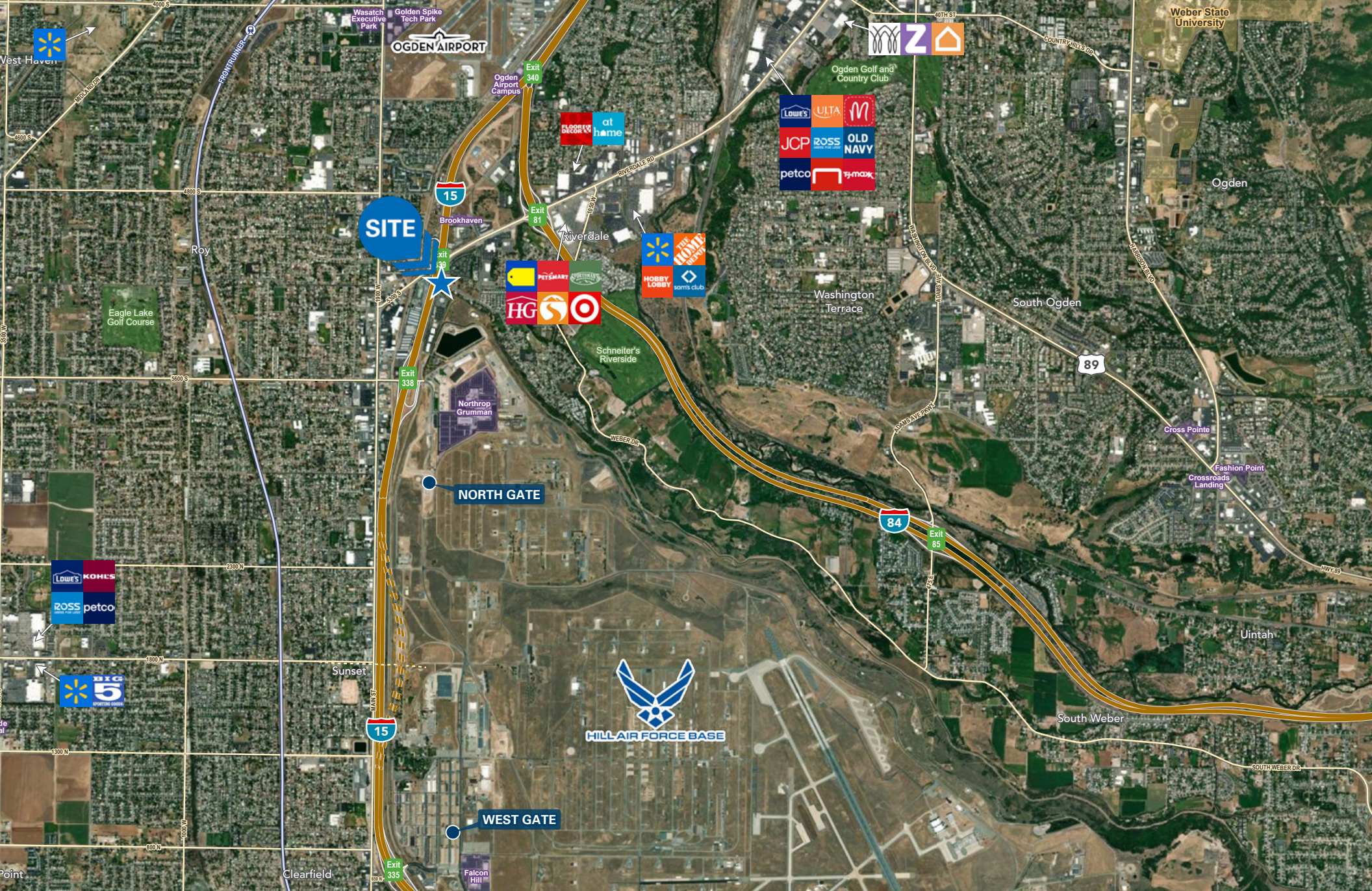


**CHRIS FALK, CCIM, SIOR**  
cfalk@newmarkmw.com  
direct 801.499.6514  
[View Profile](#)

**BRAXTON WILLIE, CCIM**  
bwillie@newmarkmw.com  
direct 801.803.3334  
[View Profile](#)

**BRANSON WOOD**  
bwood@newmarkmw.com  
direct 801.510.5207  
[View Profile](#)

**FULL SERVICE  
COMMERCIAL REAL ESTATE**  
312 East South Temple  
Salt Lake City, Utah 84111  
Office 801.456.8800  
[www.newmarkmw.com](http://www.newmarkmw.com)



**CHRIS FALK, CCIM, SIOR**  
 cfalk@newmarkmw.com  
 direct 801.499.6514  
[View Profile](#)

**BRAXTON WILLIE, CCIM**  
 bwillie@newmarkmw.com  
 direct 801.803.3334  
[View Profile](#)

**BRANSON WOOD**  
 bwood@newmarkmw.com  
 direct 801.510.5207  
[View Profile](#)

**FULL SERVICE  
 COMMERCIAL REAL ESTATE**  
 1410 S University Park Blvd, Ste 120  
 Clearfield, Utah 84015  
 Office 801.578.5580  
[www.newmarkmw.com](http://www.newmarkmw.com)