



Exclusive  
Representation

**PETER S. ROGERS**

First Vice President  
+1 734 358 3601  
peter.rogers@cbre.com  
Lic. 6501278871

**BRANDON CARNEGIE**

Vice President  
+1 248 351 2054  
brandon.carnegie@cbre.com Lic.  
6501374779

NATIONAL ADVISOR

**BRET QUINLAN**

Executive Vice President  
+1 310 408 8696  
bret.quinlan@cbre.com  
Lic. 01144338

412 ACRES

BEMIS RD

PLATT RD

E WILLIS RD

YORK TOWNSHIP, MI





**BEMIS RD**

**ANN ARBOR RAILROAD LINE**

412  
Acres

**PLATT RD**

**E WILLIS RD**



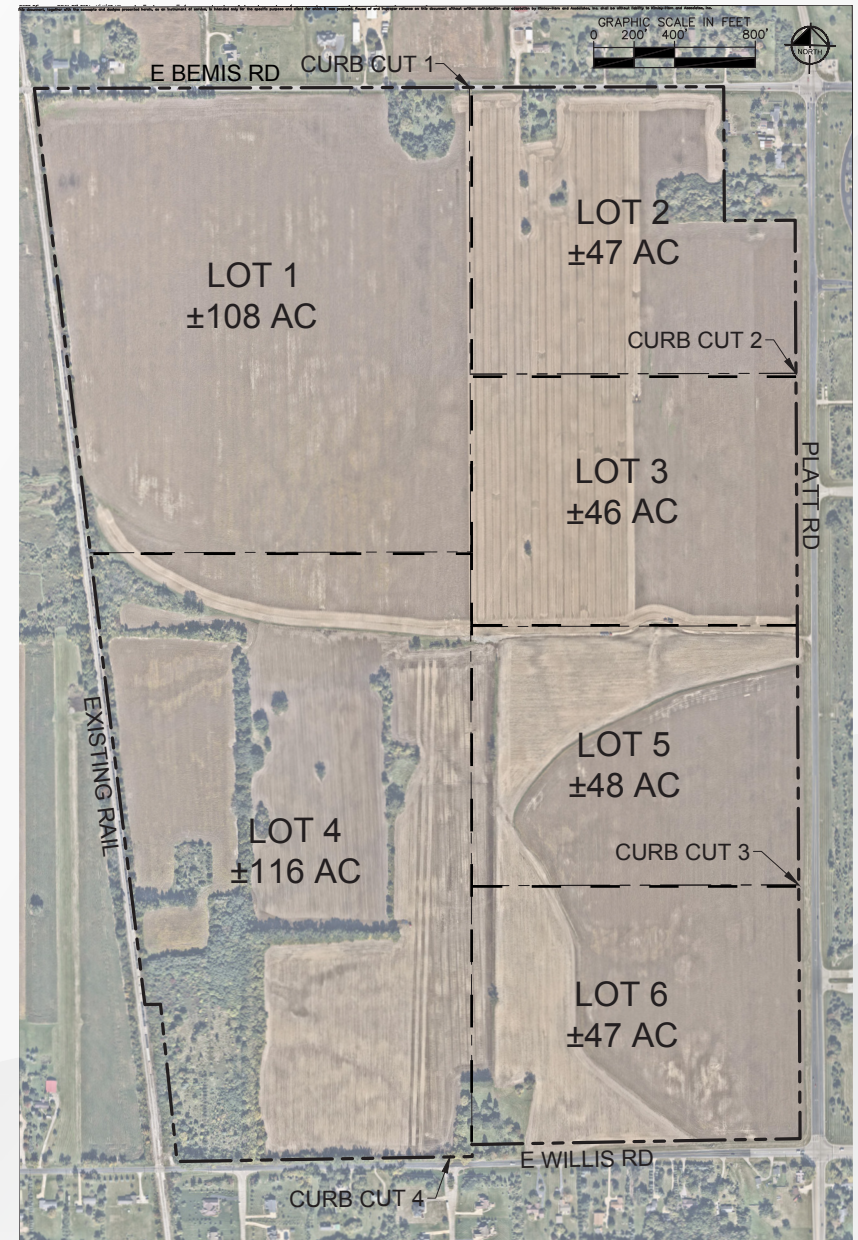
# DIVISIBLE SITE PLAN

## PRICING GUIDANCE

**Full 412 AC Property:**  
\$22,660,000.00 (\$55,000.00 per AC)

**Individual Parcels:**  
Responding to Offers  
with Flexible Acreage Splits

\*Parcel can be divided differently than shown.



# ZONING

**RPD**

Research Park District

**A-2**

Interim Agriculture

BUY  
WITH  
A  
VISION



## MAJOR LAND SITE; MULTIPLE USE OPPORTUNITIES



DATA CENTER



LAB USE



MULTI-FAMILY



RETAIL



RESEARCH



COMMERCIAL  
DISTRIBUTION



POSSIBLE OPPORTUNITY FOR  
STATE OF MICHIGAN MEGA  
PROGRAM PROJECT SITE

# KEY SITE ADVANTAGES



**DUE DILIGENCE MATERIALS AVAILABLE:  
SURVEY, PHASE I, WETLAND STUDY, ENGINEERING REPORT,  
TITLE COMMITMENT & UTILITY SPECIFICATIONS**



**412 AC  
BUSINESS  
PARK**



**FUTURE  
CLASS A  
DEVELOPMENT**



**PROXIMITY TO DTW  
AND ALL MAJOR  
FREEWAYS**



**HIGHLY EDUCATED  
WORKFORCE**



**BUILD TO SUIT  
OPPORTUNITY,  
POSSIBLE TAX  
ABATEMENTS**



**ANN ARBOR  
LIVE, WORK, PLAY**



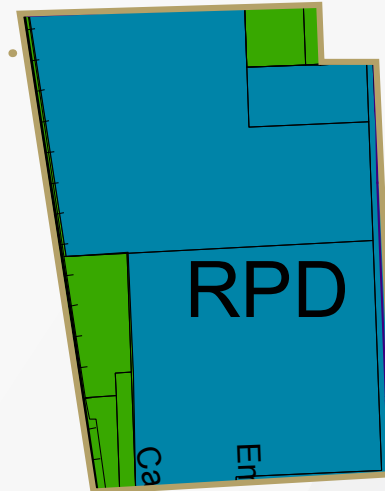
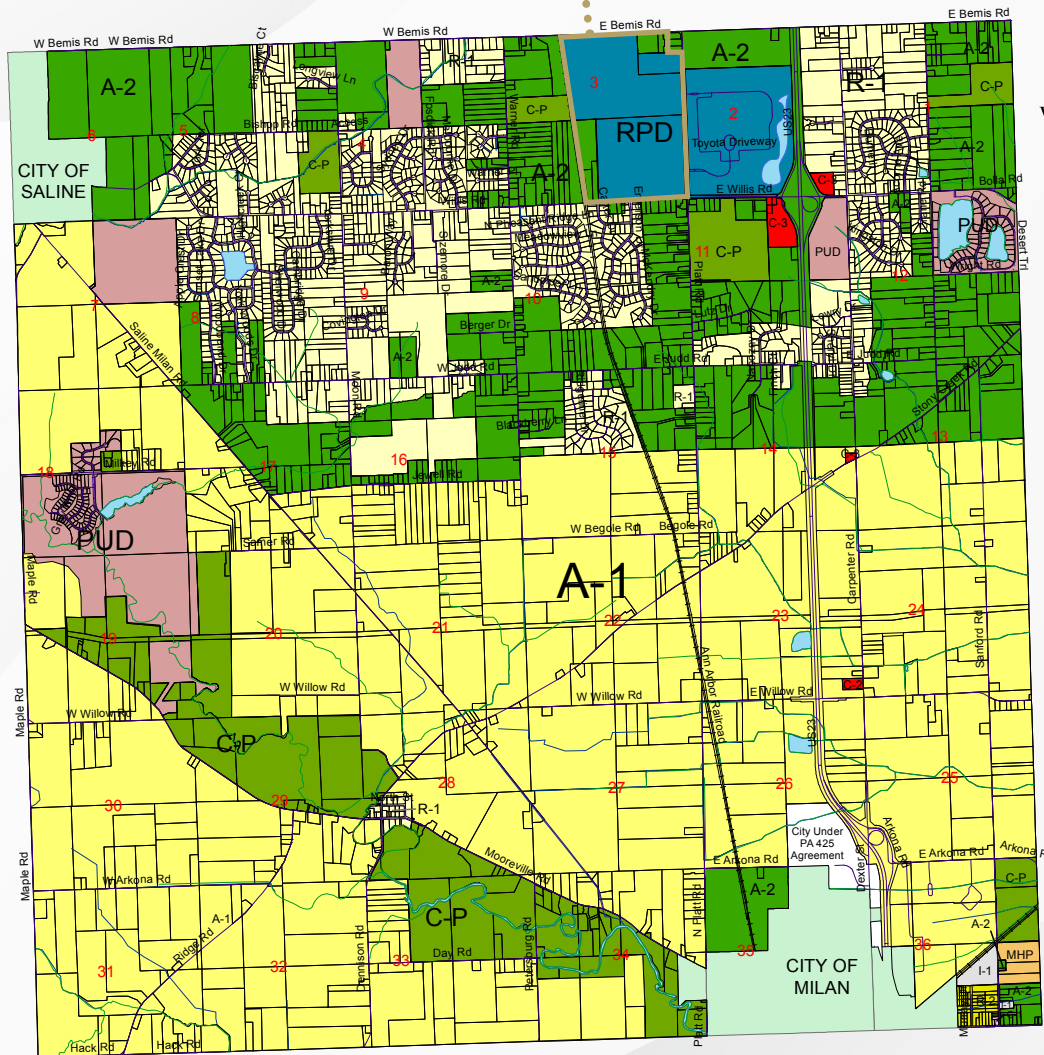
**LOCATION IS  
ADJACENT TO  
TOYOTA NA R&D HQ**



**AWARD WINNING  
K-12 SCHOOL  
DISTRICT**

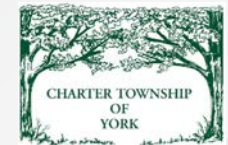
# RESEARCH PARK & INTERIM AGRICULTURE ZONING

[Link to Zoning Info](#)

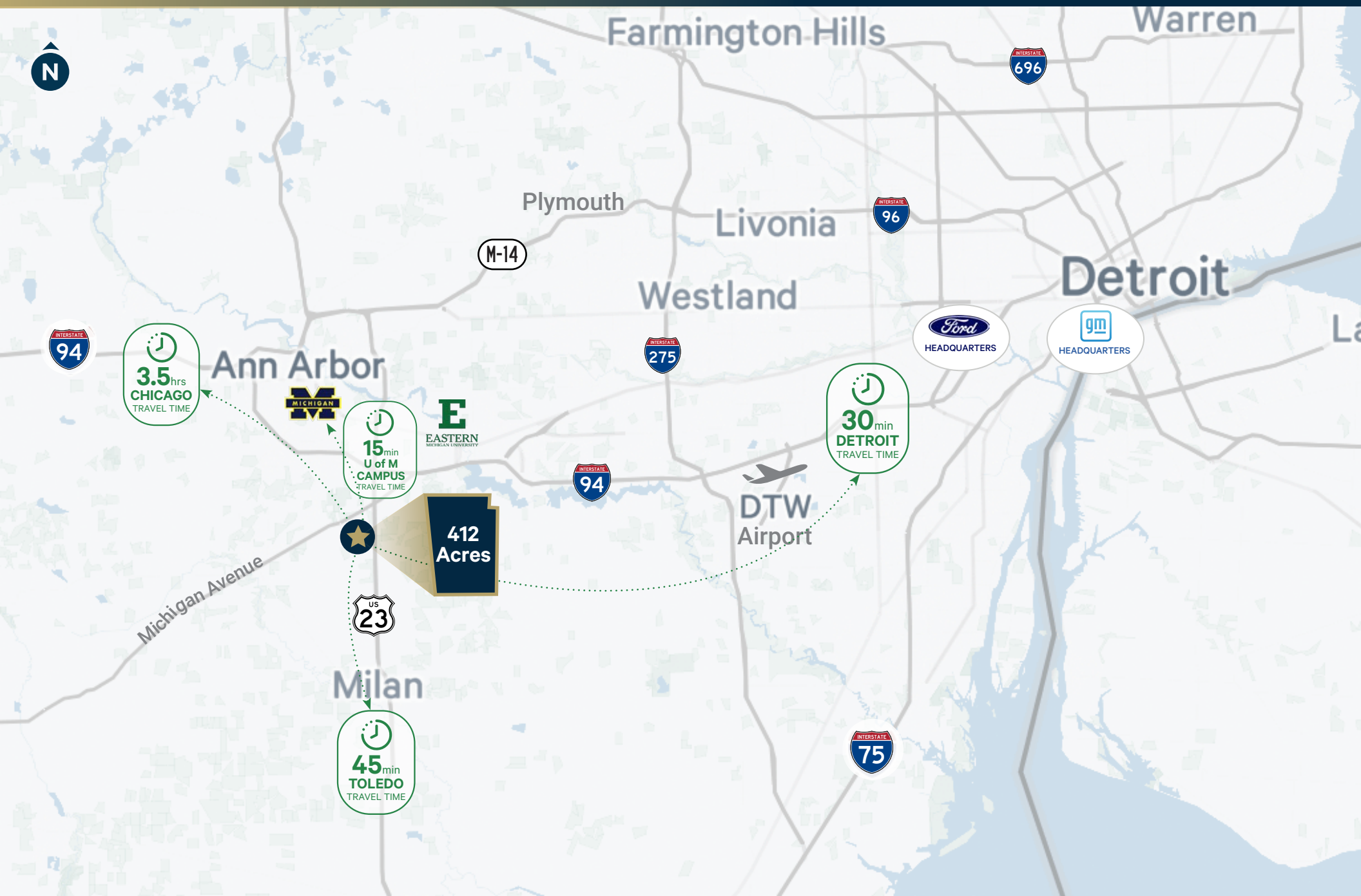


## Legend

- Parcels
- ZONING DISTRICTS**
- A-1 Essential Agriculture
- A-2 Interim Agriculture
- C-1 Convenience Commercial
- C-2 General Commercial
- C-3 Regional Commercial
- RPD Research Park District
- C-P Conservation Preservation
- I-1 Light Industrial
- MHP Mobile Home Park
- PUD Planned Unit Development
- R-1 Single Family Suburban Residential
- R-2 Single Family Urban Residential
- PA 425 Agreement



# REGIONAL LOCATION MAP



412 ACRES

YORK TOWNSHIP, MI



PLATT RD

412 AC

BEMIS RD

EWILLIS RD

ANN ARBOR RAILROAD LINE

EXCLUSIVE CONTACTS:

**PETER S. ROGERS**

First Vice President  
+1 734 358 3601  
peter.rogers@cbre.com  
Lic. 6501278871

**BRANDON CARNEGIE**

Vice President  
+1 248 351 2054  
brandon.carnegie@cbre.com  
Lic. 6501374779

NATIONAL ADVISOR:

**BRET QUINLAN**

Executive Vice President  
+1 310 408 8696  
bret.quinlan@cbre.com  
Lic. 01144338

