



**24-Hour  
Access**



**Property Manager  
on Site**



**Controlled  
Access**



**Card key and  
24-hour Security**

## PROPERTY INFORMATION

Address: 2050 W. 190th St, Torrance, CA

Available SF: 30,685 SF

Max Contiguous SF: 18,810 SF

Building SF: 269,988

Asking Rate: Undisclosed

Covered Parking: 385 spaces

Surface Parking: 140 spaces

## AVAILABILITIES

### SUITE

### RSF

Suite 101

**5,511 RSF**  
Available Now

Suite 400

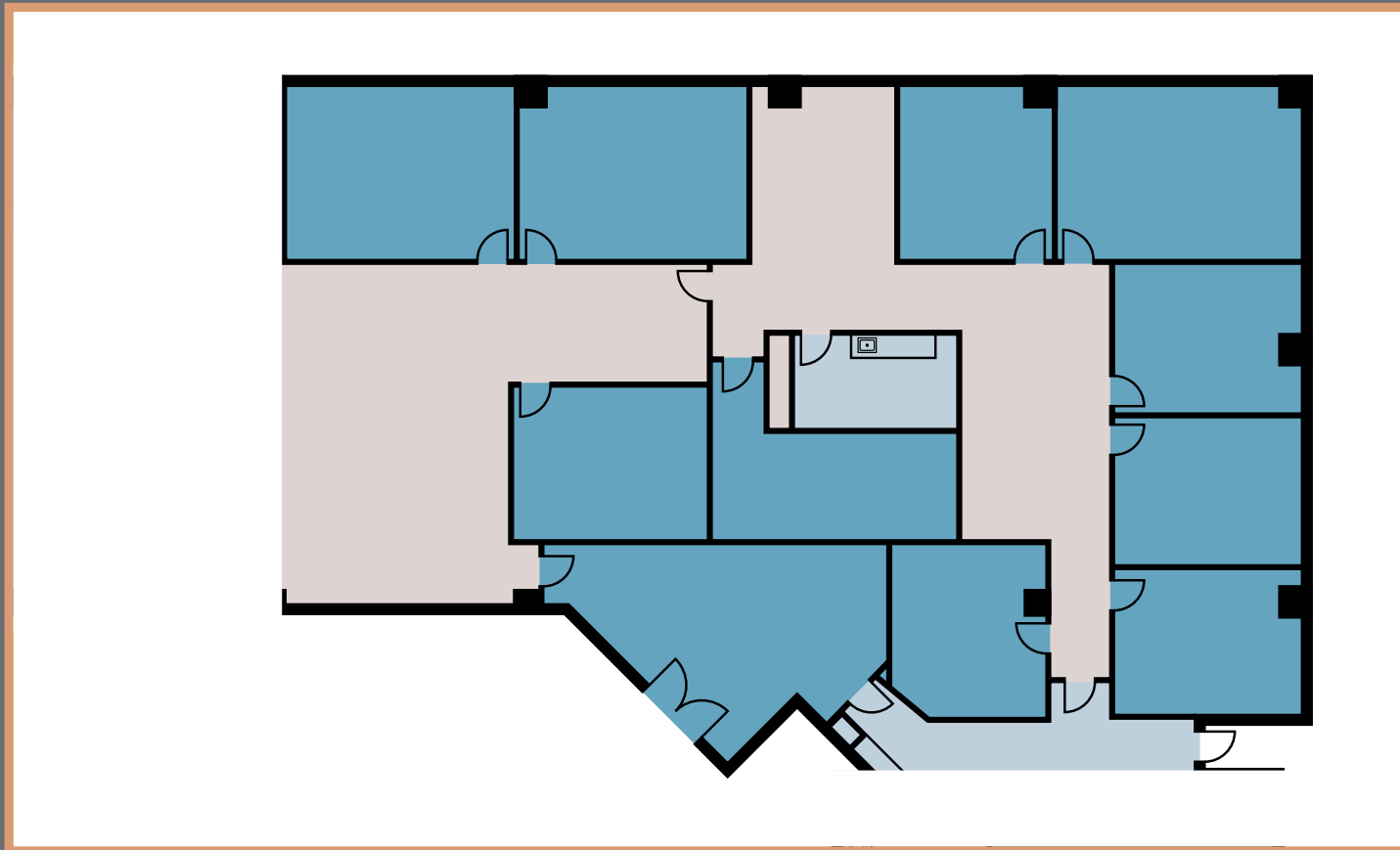
**7,057-18,810 RSF**  
Available Now

Suite 450

**6,364 RSF**  
Available 9/1/2026

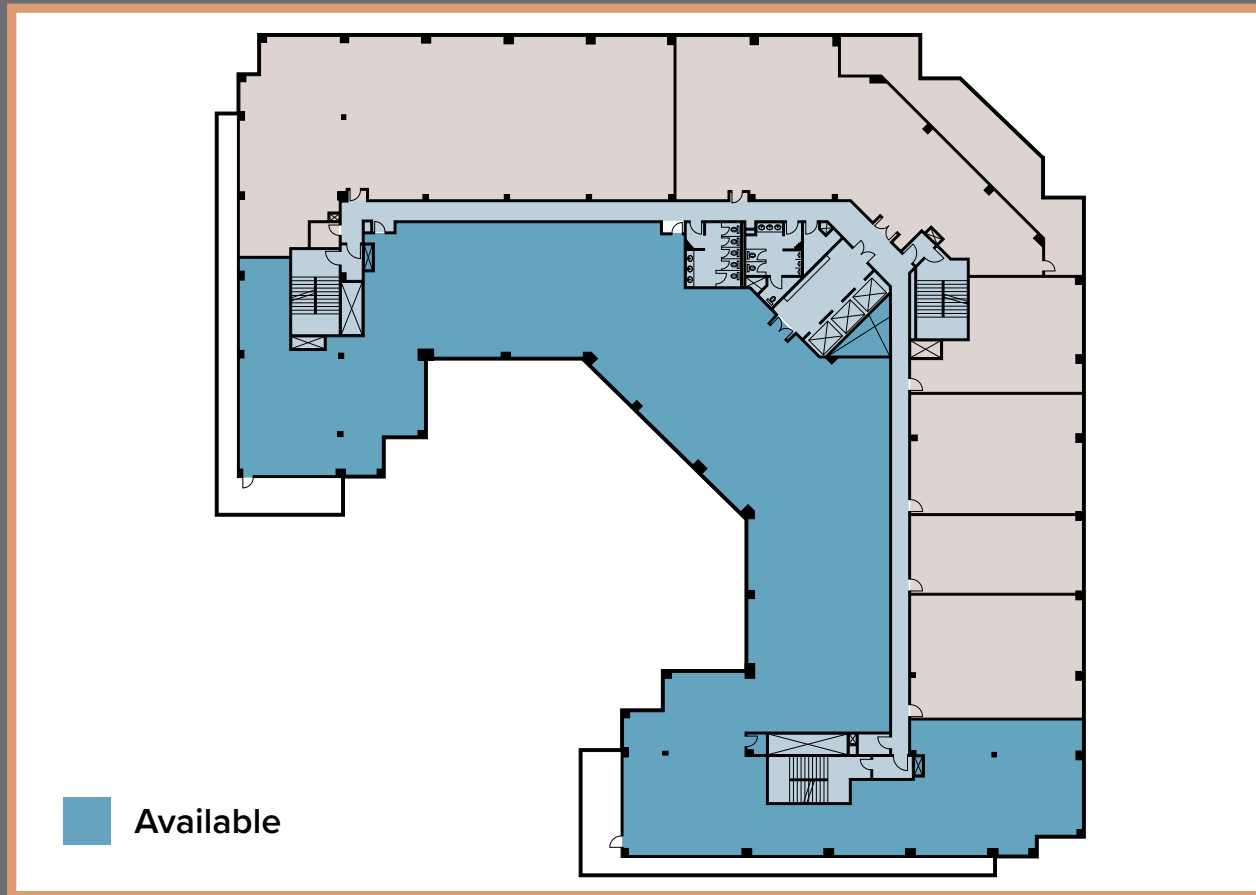


**FLOOR PLAN: SUITE 101**  
**5,511 RSF**



# FLOOR PLAN: SUITE 400

7,057-18,810 RSF



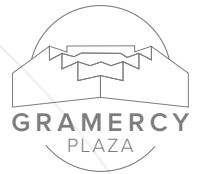
# FLOOR PLAN: SUITE 450 6,364 RSF



# AMENITY MAP



GRAMERCY PLAZA [2050 W. 190TH ST, TORRANCE, CA]



For more  
information,  
please contact:

**TOM SHEETS**

Executive Vice President  
Lic. 01252183  
+1 310 363 4943  
tom.sheets@cbre.com

**QUINT CARROLL**

Senior Vice President  
Lic. 01914692  
+1 310 363 4973  
quint.carroll@cbre.com

© 2025 CBRE, Inc. All rights reserved. This information has been obtained from sources believed reliable but has not been verified for accuracy or completeness. You should conduct a careful, independent investigation of the property and verify all information. Any reliance on this information is solely at your own risk. CBRE and the CBRE logo are service marks of CBRE, Inc. All other marks displayed on this document are the property of their respective owners, and the use of such logos does not imply any affiliation with or endorsement of CBRE. Photos herein are the property of their respective owners. Use of these images without the express written consent of the owner is prohibited.

**CBRE**