



n5696 850th St, Elk Mound, WI 54739

Undisclosed

Interstate 94 State Hwy 29 Office/Retail Building

Retail | 2 spaces available | 300 SqFt - 4,500 SqFt



Guy Rossato
WI 52275-90
715.579.6287

Listing Added: 04/11/2026
Listing Updated: 04/19/2026

 Company logo



Building Details

| Property Type | Retail, Office, Special Purpose | Subtype | Traditional Office, Executive Office, Coworking, Medical Office |
|------------------------|----------------------------------|---------------------|---|
| Tenancy | Multiple | Total Building SqFt | 9,000 |
| Minimum Divisible SqFt | 300 | Max Contiguous SqFt | 4,500 |
| Total Building Suites | 6 | Vacant SqFt | 6,500 |
| Land Acres | 1.21 | Lot Size (acres) | 1.21 |
| Class | C | Buildings | 1 |
| Stories | 2 | Ceiling Height | 9 Feet |
| Total Parking Spaces | 125 | Cross Street | Interstate 94 |
| Zoning | Commercial | Submarket | Eau Claire, Menomonie, Elk Mound |
| Submarket Cluster | Eau Claire, Menomonie, Elk Mound | | |

Building Description

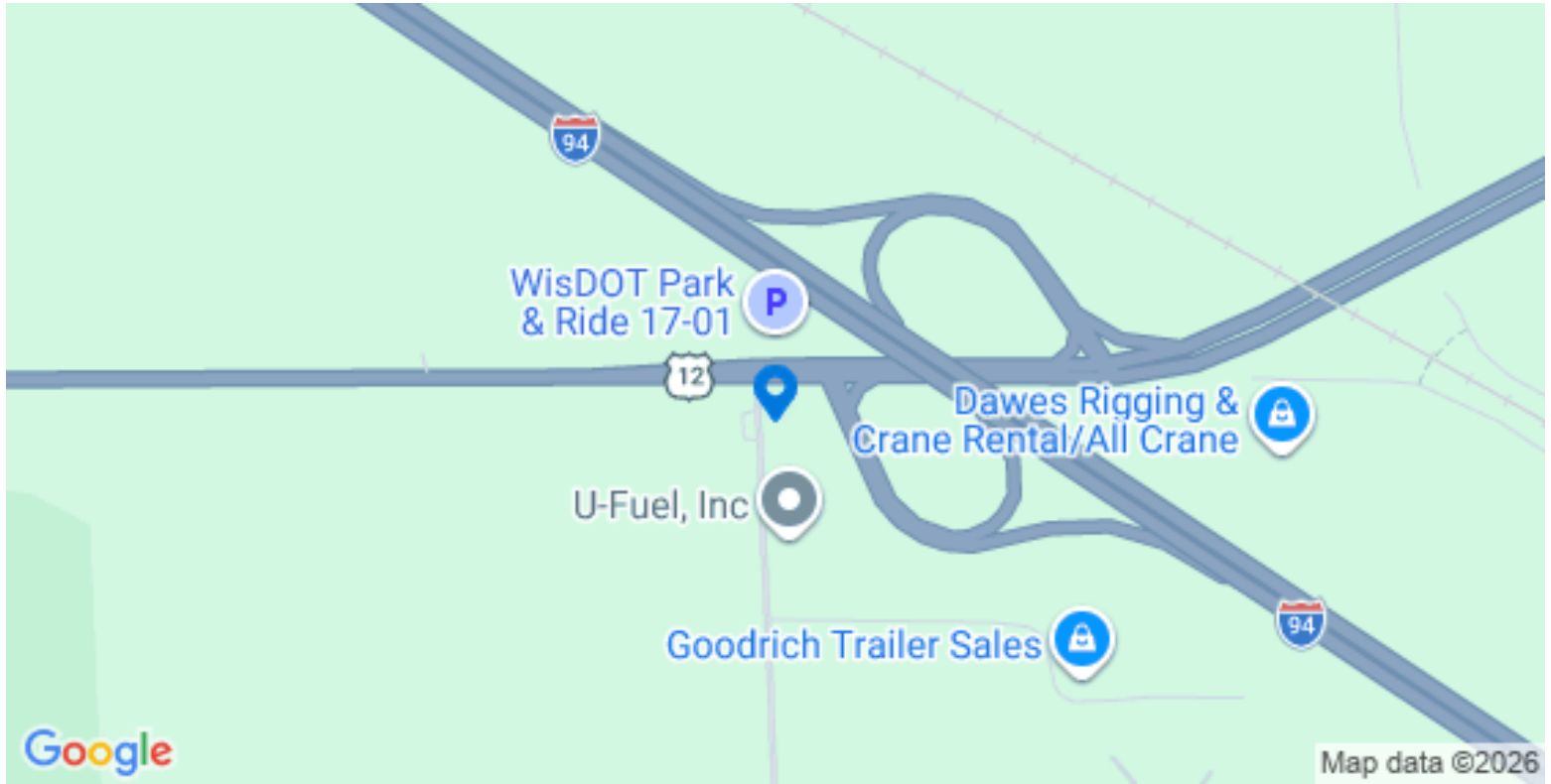
Retail and Office Space Available.
Great location serving Eau Claire, Menomonie and Elk Mound
45 Minutes to Hudson and one hour from the Minneapolis Suburbs!
Located at the intersection of Interstate 94 and State Hwy 29!
Traffic Counts over 32,000 VPD with easy ingress and egress
Optional 2 sided 14' x 48' lighted Billboard available!
Flexible space opportunities!

Building Highlights

Let's make a deal!!
Ready to move in!
Office sizes vary from 300 sf to 4,500 sf.
Gross Lease available!
Flexible Terms.
Loading Dock Access
Flexible Space Layouts
Large overflow parking area



Building Location (1 Location)



Available Space 1 Details

Access to Loading Dock Common Bathrooms Access to Conference Room Flexible layout

| | | | |
|-------------------|-----------|-------------------|--|
| Listing Type | Direct | Space Subtype | Traditional Office,Executive Office,Coworking,Medical Office |
| RSF | 4,500 SF | Min Contiguous SF | 1,000 SF |
| Max Contiguous SF | 4,500 SF | Lease Type | Gross |
| Lease term | 2-4 years | Days on Market | 7 days |

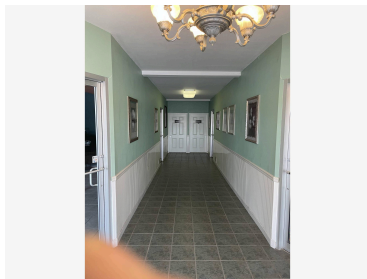
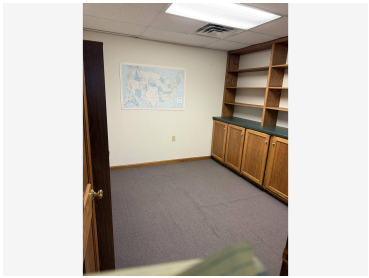
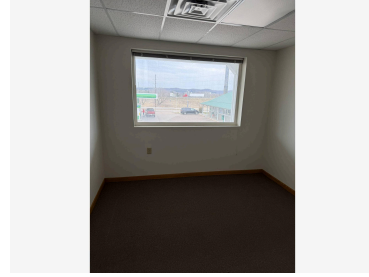
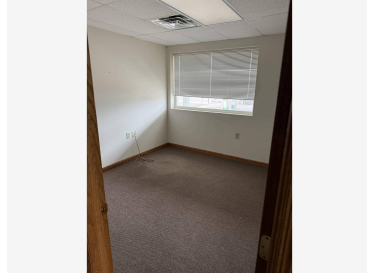
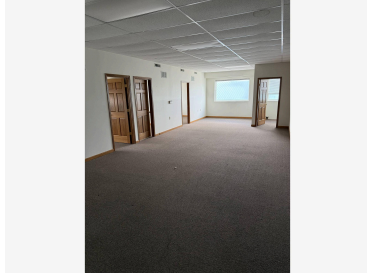
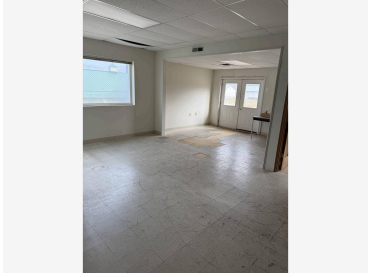
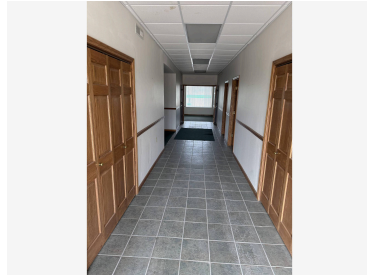
Available Space 2 Details

Great Retail Location The 950 sf space can easily handle a hair salon! The front 1,000 sf space is a great retail location with easy access and parking. Common Bathrooms. Gross Lease!

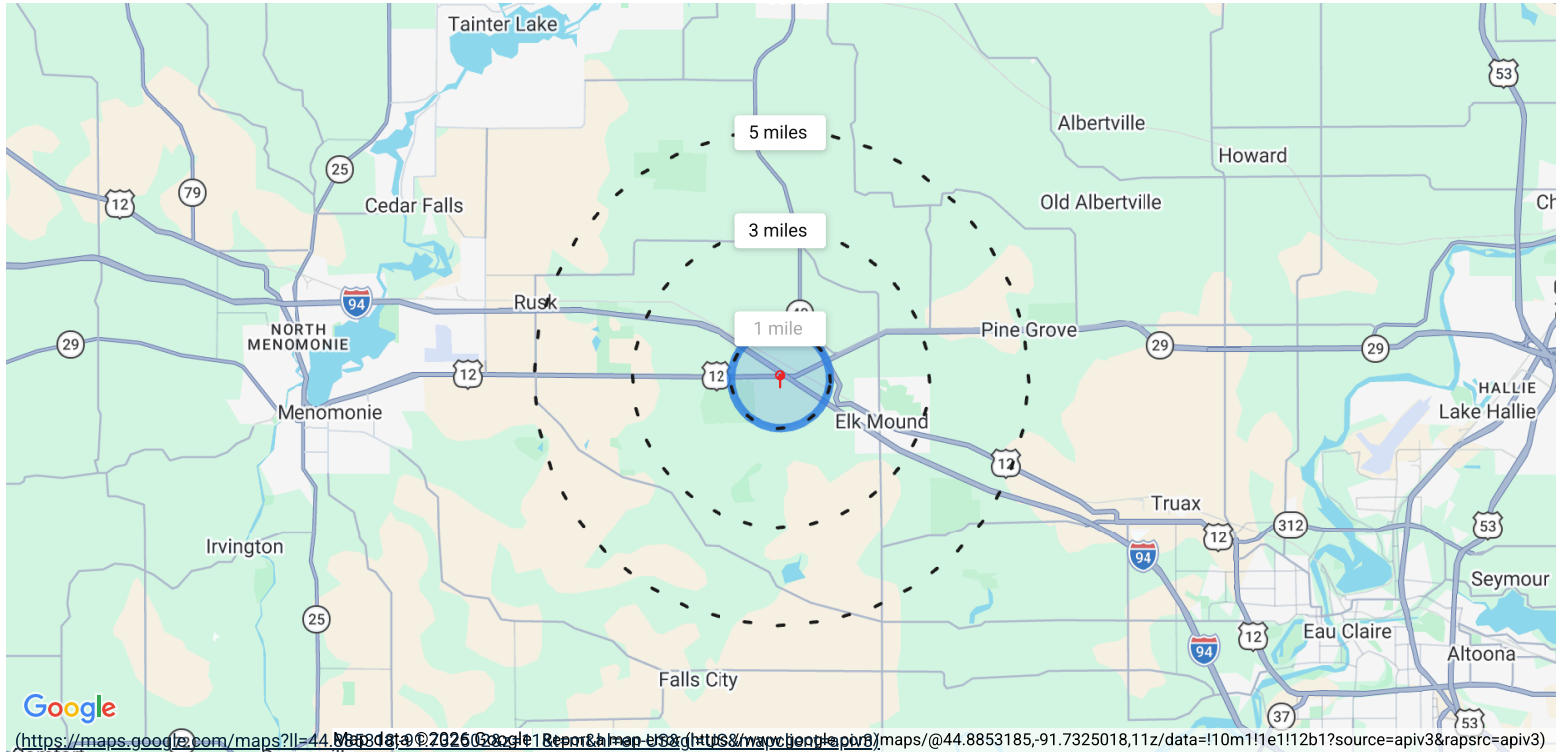
| | | | |
|-------------------|---------|-------------------|--|
| Listing Type | Direct | Space Subtype | Traditional Office,Executive Office,Coworking,Medical Office |
| Min Contiguous SF | 950 SF | Max Contiguous SF | 2,000 SF |
| Space Available | 4/14/26 | Parking | 125 |
| Lease Type | Gross | Days on Market | 7 days |



Property Photos (15 photos)



Demographic Insights



1 mile

3 miles

5 miles

Population

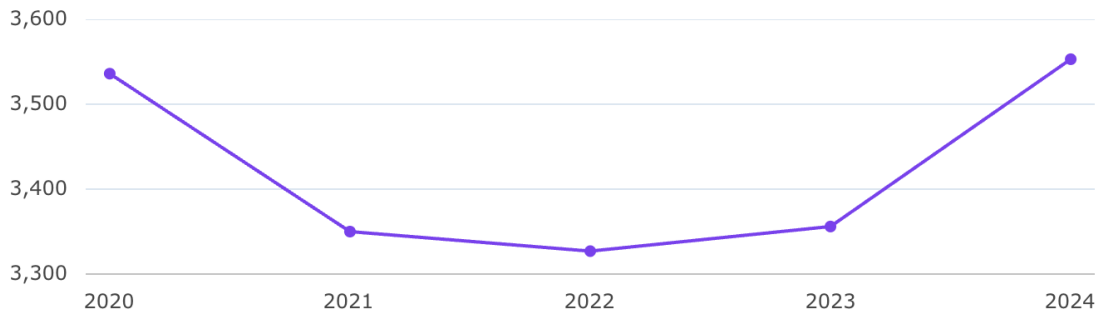
3,553

↑ 5%

Compared to 3,356 in 2023

0%

Compared to 3,536 in 2020



Household Income

\$89.8k

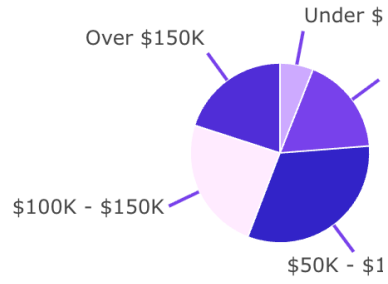
Median Income

\$95.2k

2029 Estimate

↑ **6%**

Growth Rate



Age Demographics

37

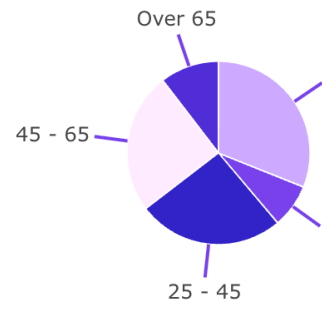
Median Age

39

2029 Estimate

↑ **6%**

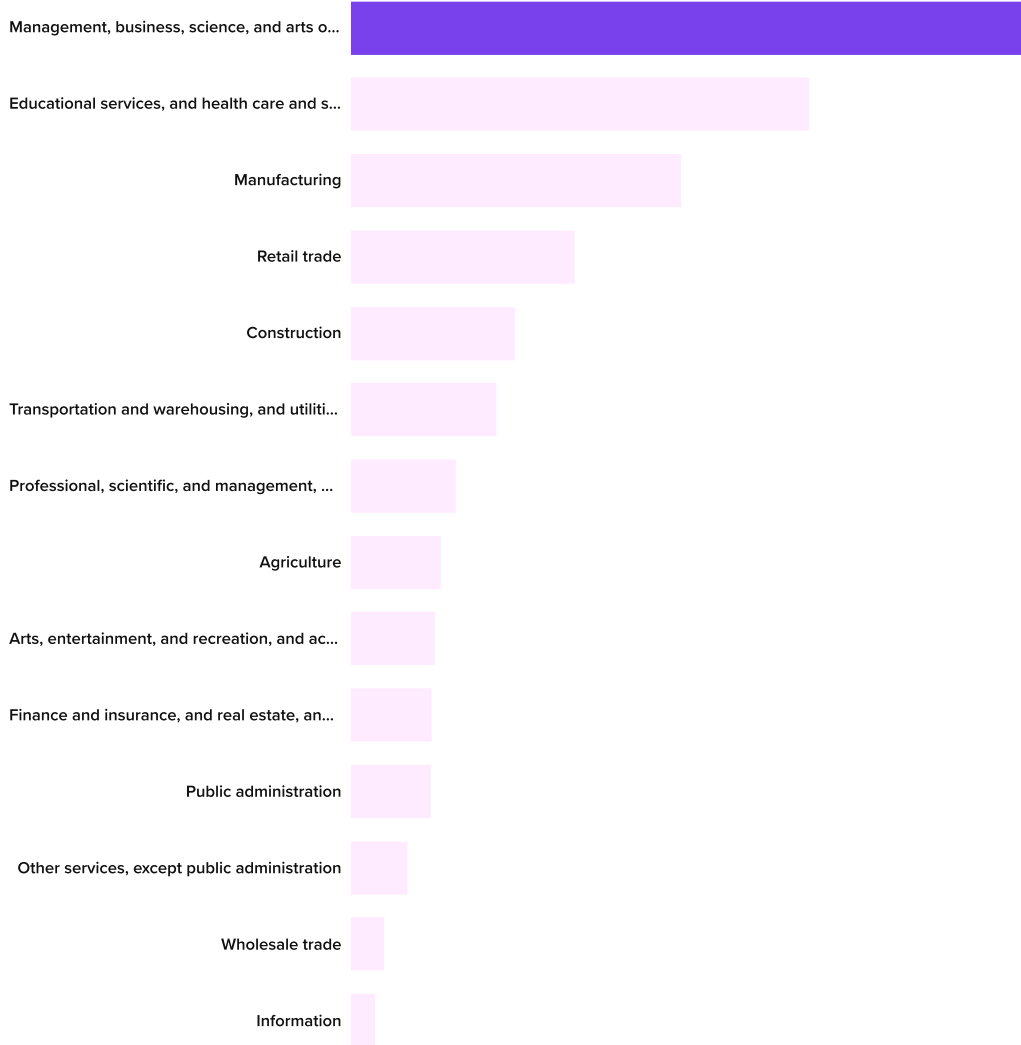
Growth Rate



Number of Employees

2,757

Top Employment Categories



Housing Occupancy Ratio

24:1

123:1 predicted
by 2029



Renter to Homeowner Ratio

1:3

1:3 predicted by
2029

