



JONES
ON MAIN

708 & 712 MAIN STREET | HOUSTON, TEXAS

partners



THE WIDEMAN COMPANY



COME HERE TO CREATE.

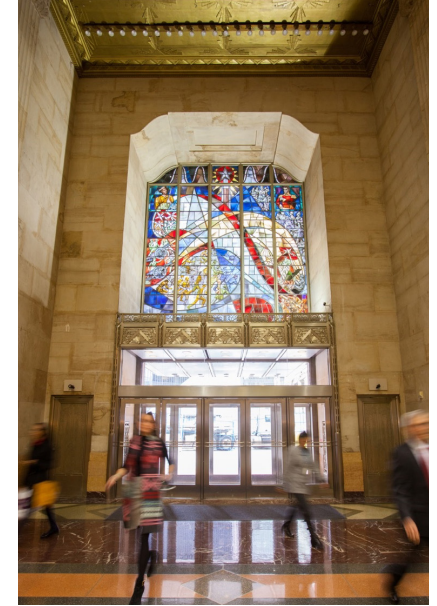
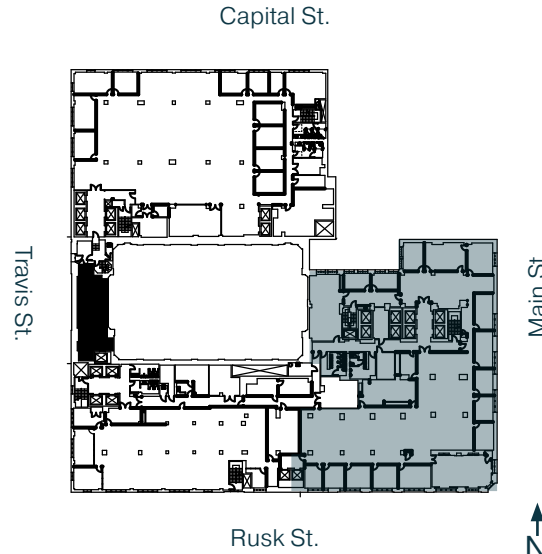
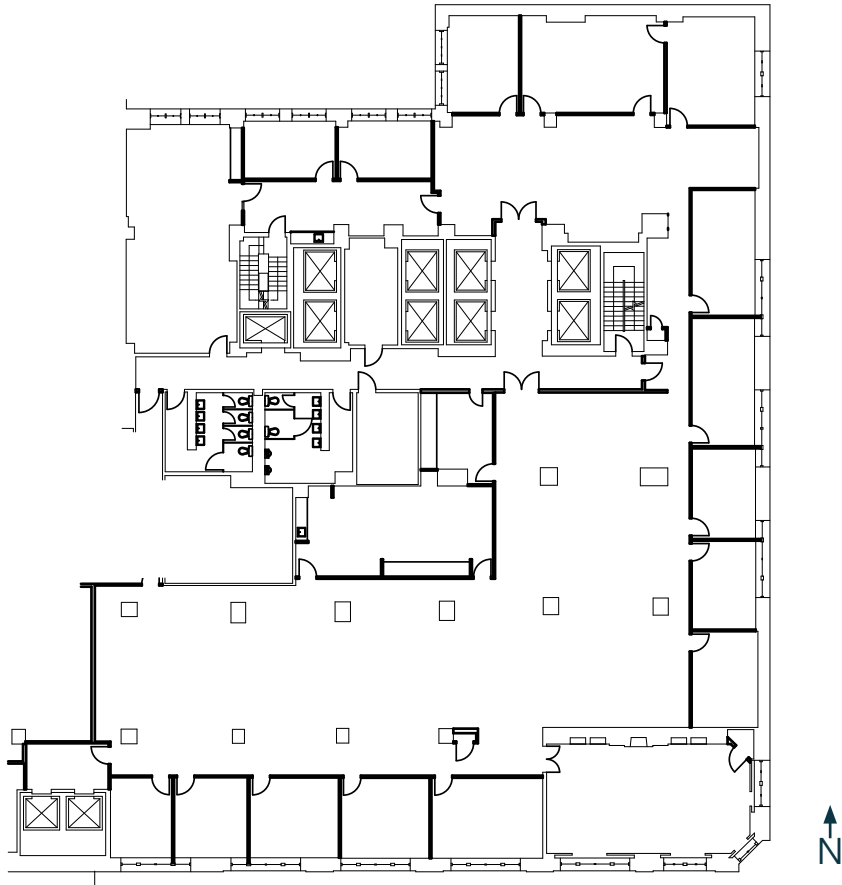
The Jones on Main was commissioned by Jesse Jones in 1927 to be a grand beacon of commerce. Designed in the elegant, and at the time, brand new Art Deco style, the grand 30-story tower became the centerpiece of Downtown Houston, and one of the most preeminent examples of the style west of the Mississippi. At nearly a century old, this architectural masterpiece has kept up with the times, respecting its architectural past and continuing to evolve: embracing new technologies, modern amenities, and culinary experiences.

Level 03 Suite 300E

Full Floor
16,200 SF Office



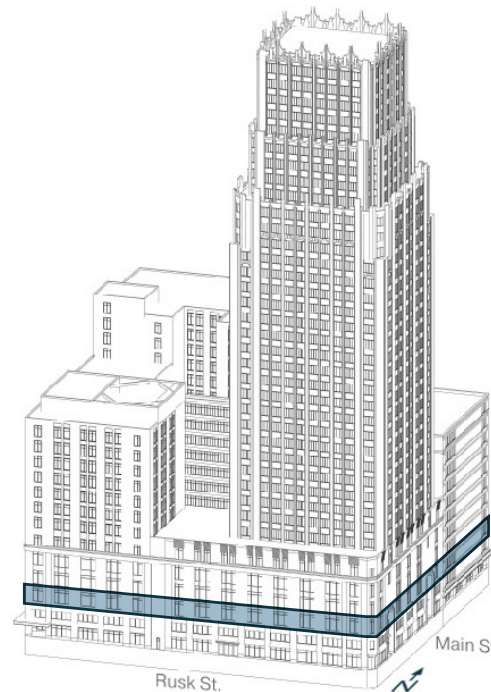
jonesonmain.com



partners

VINCE STRAKE
713 405 7476
vince.strake@partnersrealestate.com

LESLEY RICE
713 275 9611
lesley.rice@partnersrealestate.com



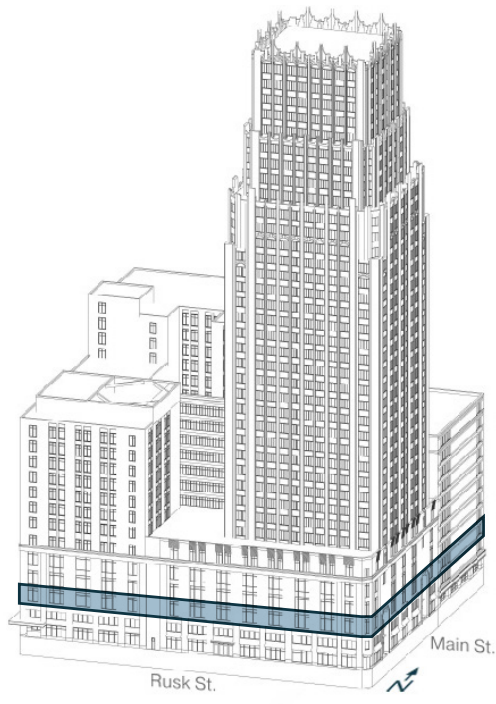
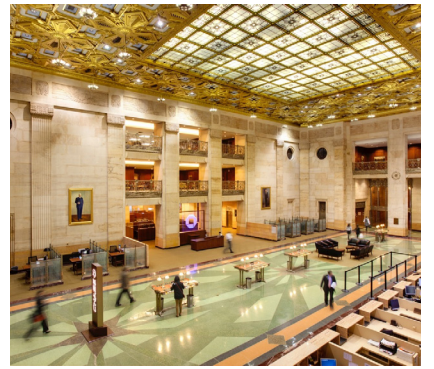
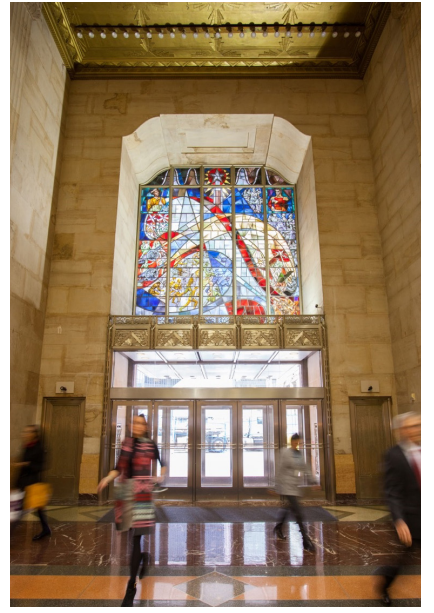
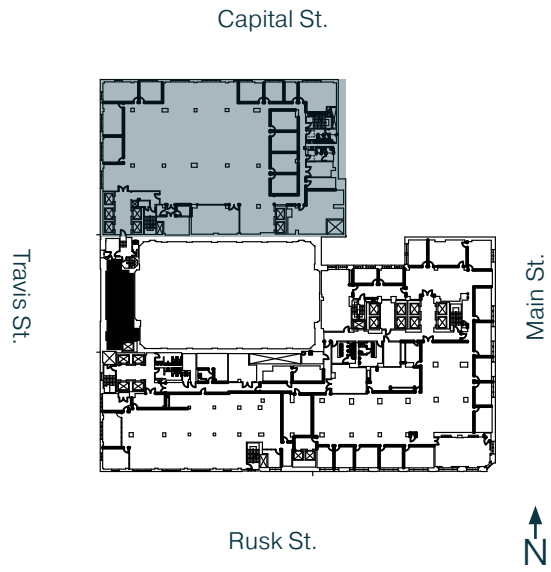
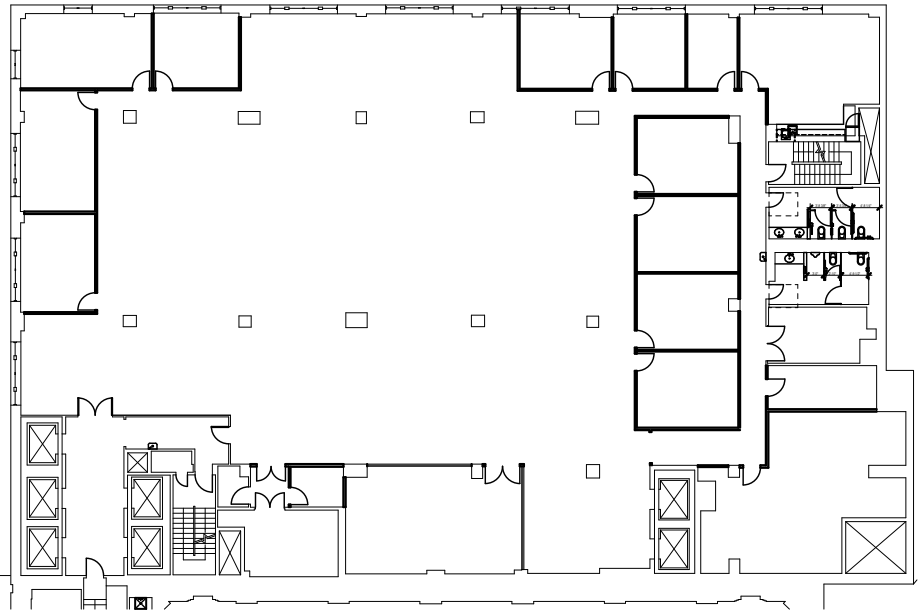
All dimensions and conditions are approximate and for information only.

Level 03 Suite 300N

Full Floor
16,045 SF Office



jonesonmain.com



partners

VINCE STRAKE
713 405 7476
vince.strake@partnersrealestate.com

LESLEY RICE
713 275 9611
lesley.rice@partnersrealestate.com

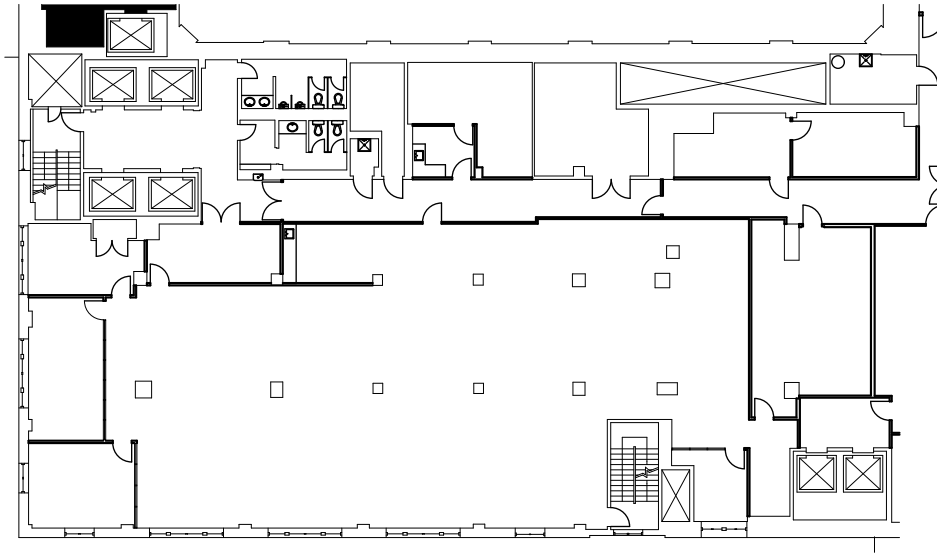
All dimensions and conditions are approximate and for information only.

Level 03 Suite 300S

Full Floor
10,500 SF Office



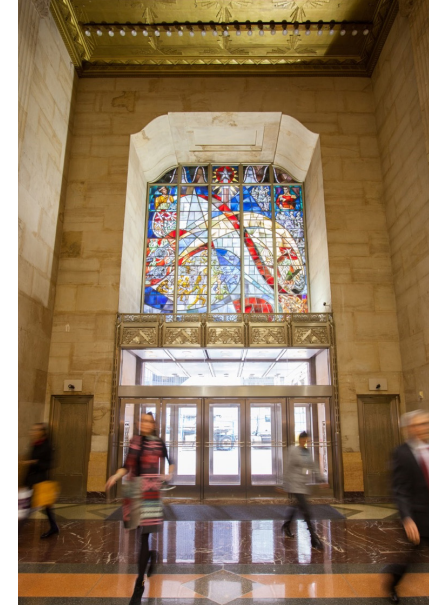
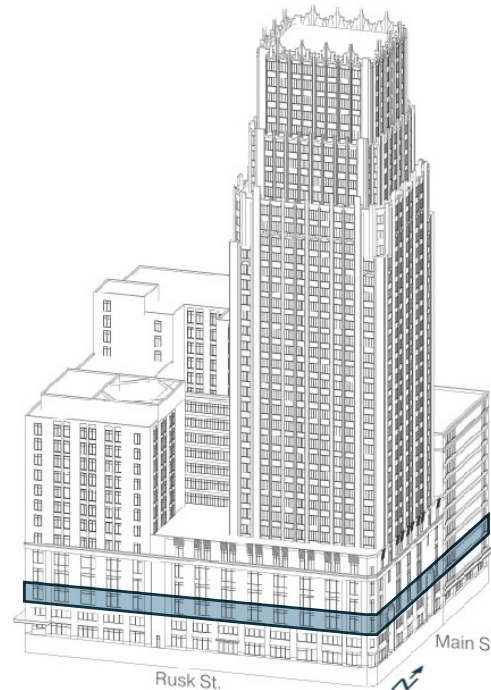
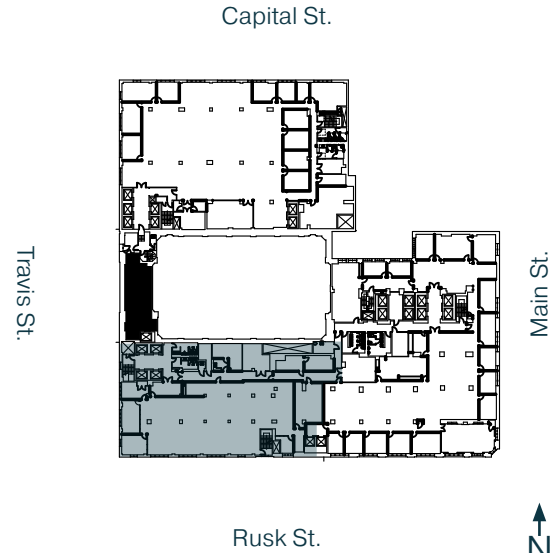
jonesonmain.com



partners

VINCE STRAKE
713 405 7476
vince.strake@partnersrealestate.com

LESLEY RICE
713 275 9611
lesley.rice@partnersrealestate.com



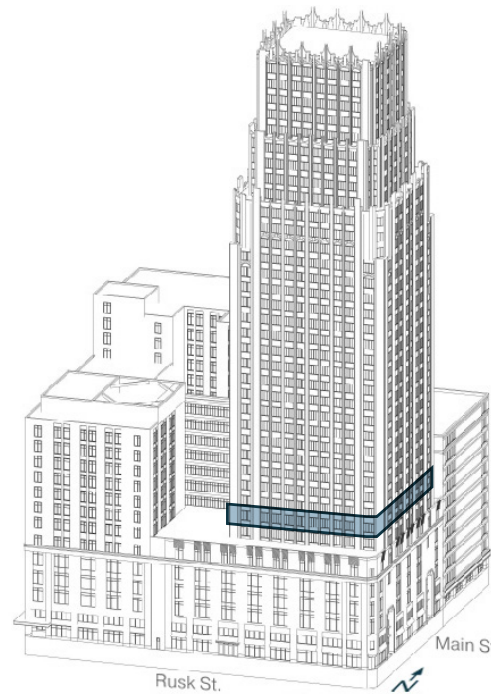
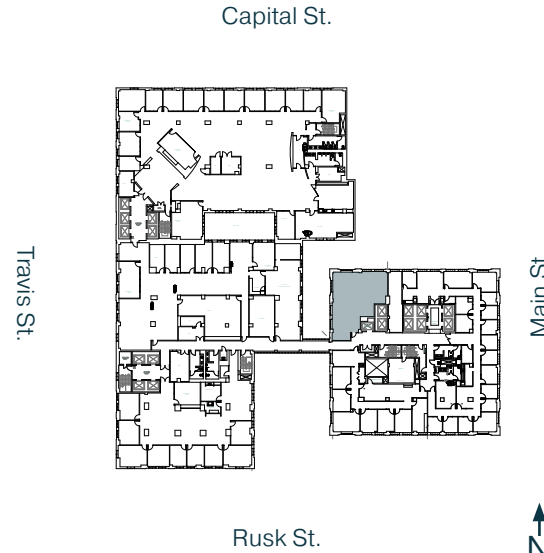
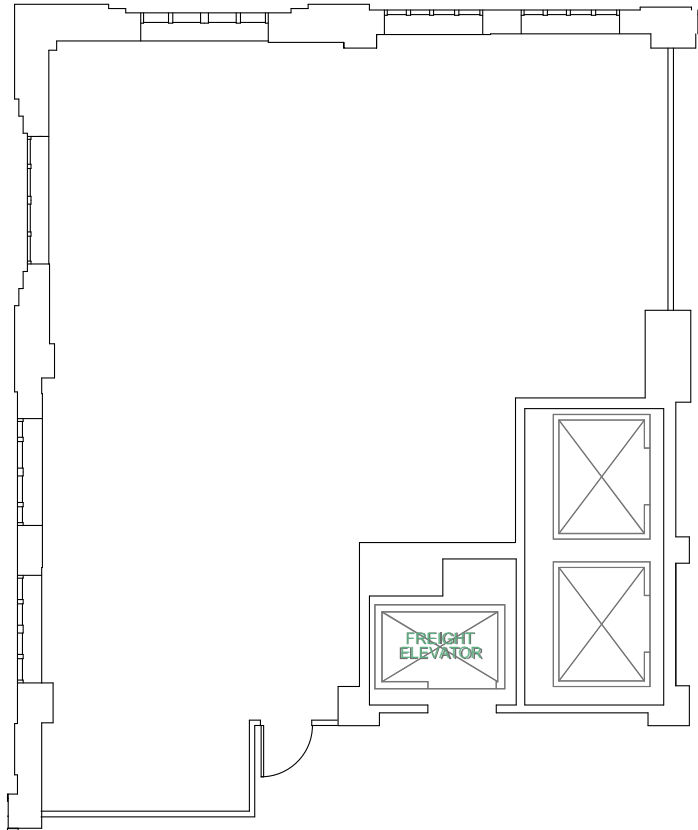
All dimensions and conditions are approximate and for information only.

Level 08 Suite 805

Partial Floor
1,721 SF Office



jonesonmain.com



partners

VINCE STRAKE
713 405 7476
vince.strake@partnersrealestate.com

LESLEY RICE
713 275 9611
lesley.rice@partnersrealestate.com

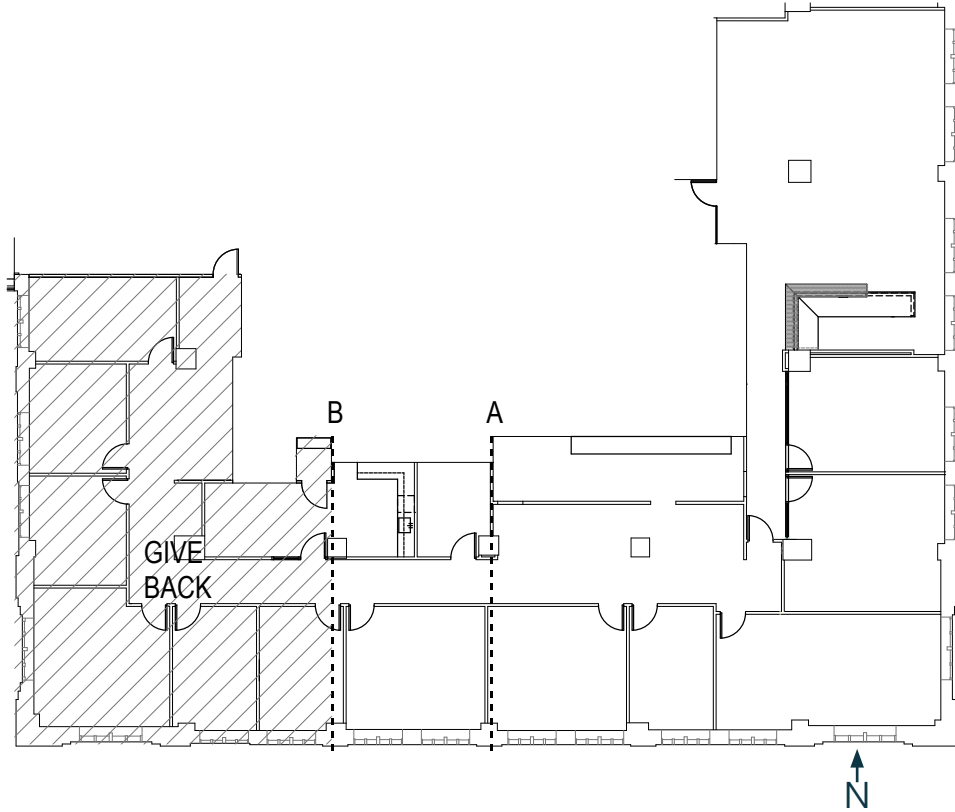
All dimensions and conditions are approximate and for information only.

Level 11 Suite 1100E

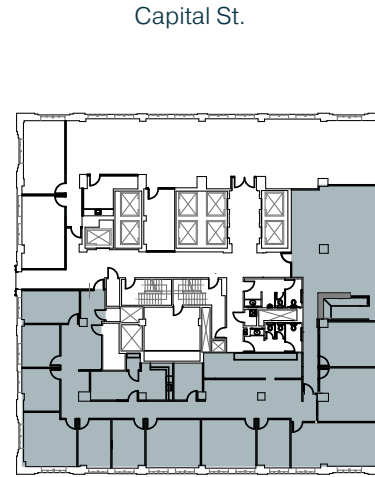
Partial Floor
7,221 SF Office



jonesonmain.com



Travis St.

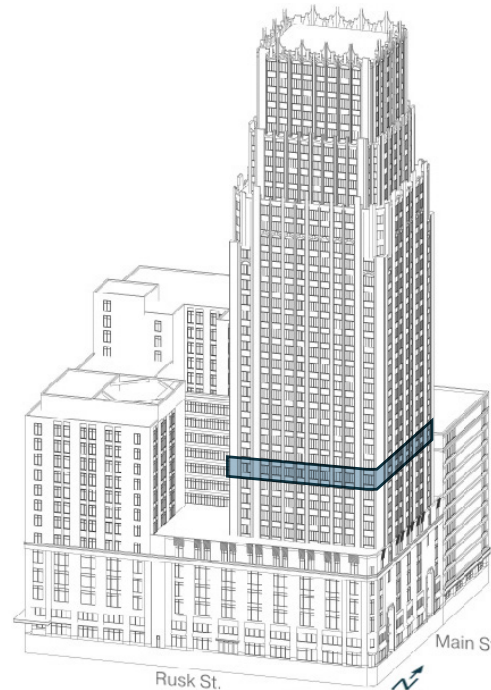


Main St.



↑ N

Rusk St.



partners

VINCE STRAKE
713 405 7476
vince.strake@partnersrealestate.com

LESLEY RICE
713 275 9611
lesley.rice@partnersrealestate.com

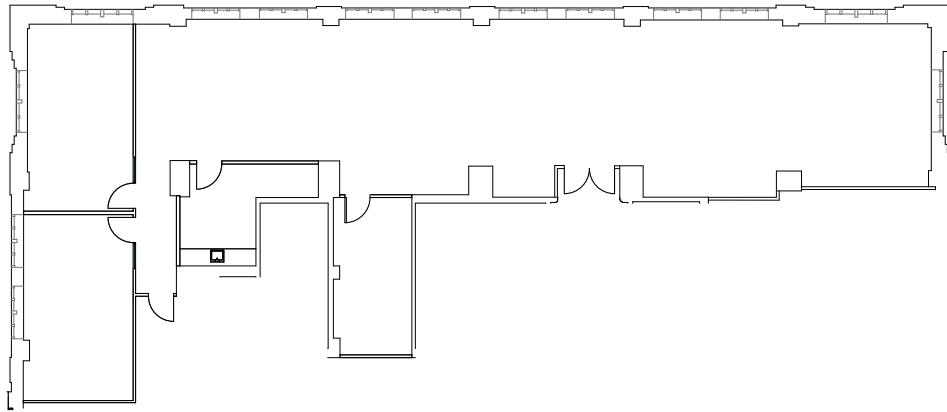
All dimensions and conditions are approximate and for information only.

Level 11 Suite 1105E

Partial Floor
3,974 SF Office



jonesonmain.com

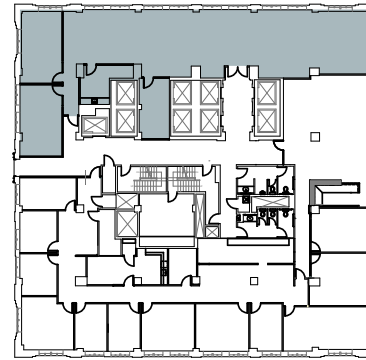


partners

VINCE STRAKE
713 405 7476
vince.strake@partnersrealestate.com

LESLEY RICE
713 275 9611
lesley.rice@partnersrealestate.com

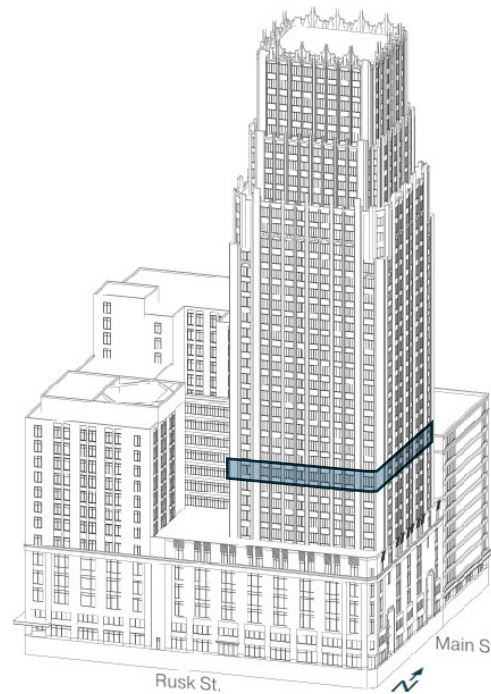
Capital St.



Travis St.

Main St.

Rusk St.



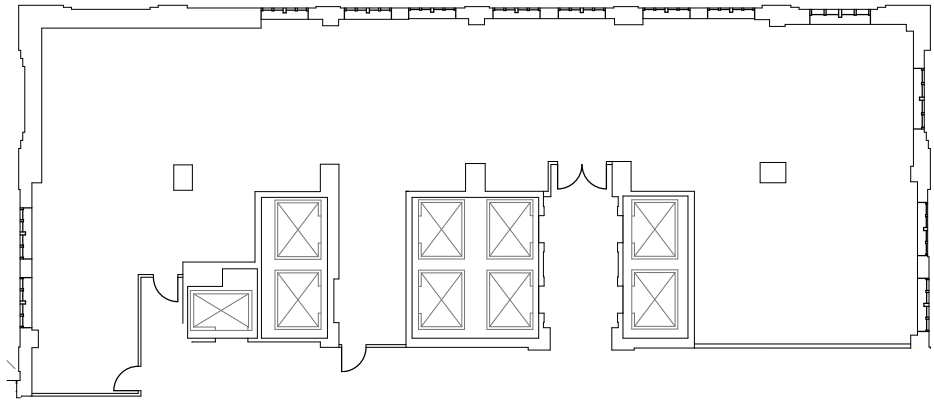
All dimensions and conditions are approximate and for information only.

Level 12 Suite 1275

Partial Floor
4,418 SF Office



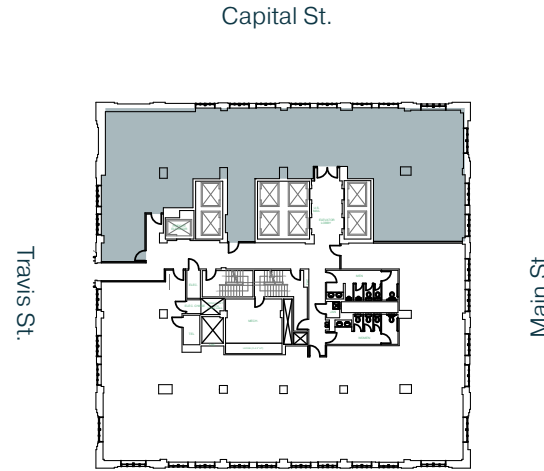
jonesonmain.com



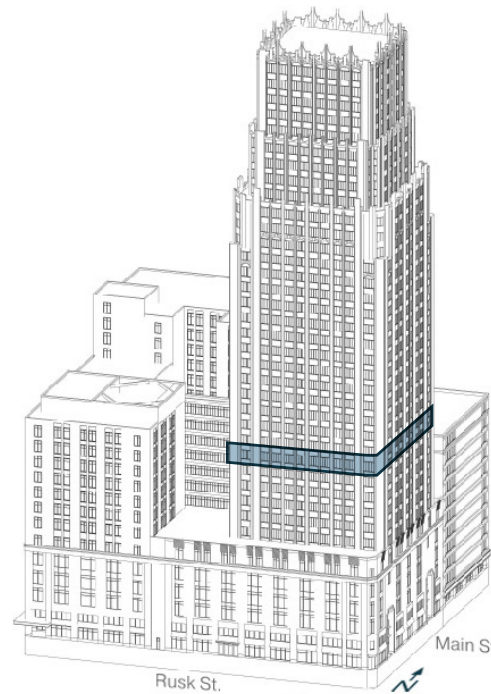
partners

VINCE STRAKE
713 405 7476
vince.strake@partnersrealestate.com

LESLEY RICE
713 275 9611
lesley.rice@partnersrealestate.com



Rusk St.



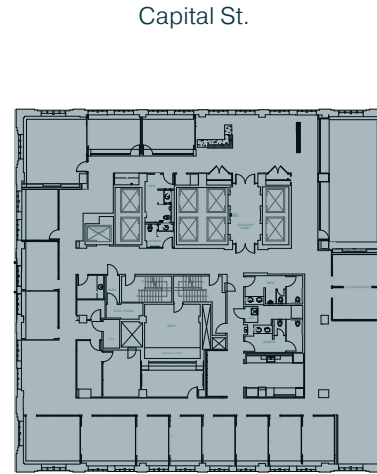
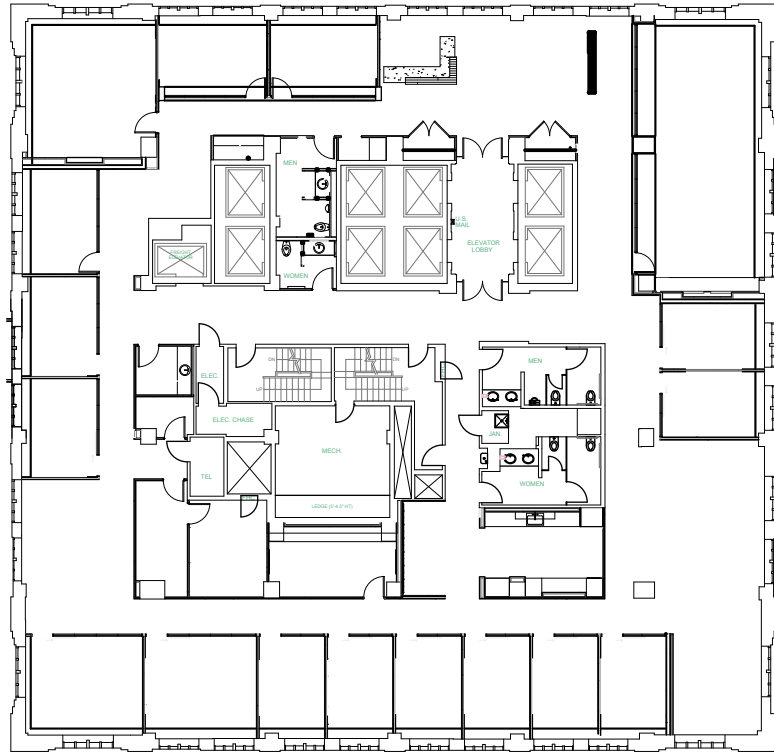
All dimensions and conditions are approximate and for information only.

Level 13 Suite 1300

Full Floor
11,447 SF Office



jonesonmain.com

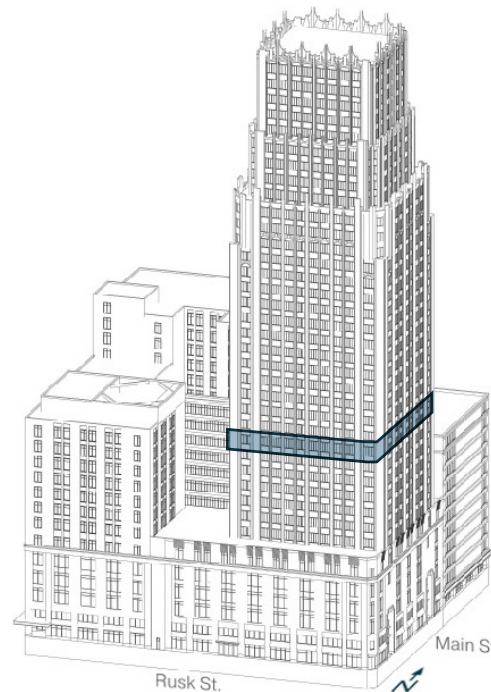
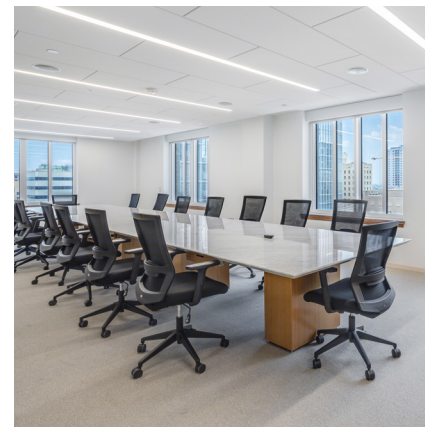


Travis St.

Capital St.

Rusk St.

Main St.



Rusk St.

Main St.

partners

VINCE STRAKE
713 405 7476
vince.strake@partnersrealestate.com

LESLEY RICE
713 275 9611
lesley.rice@partnersrealestate.com

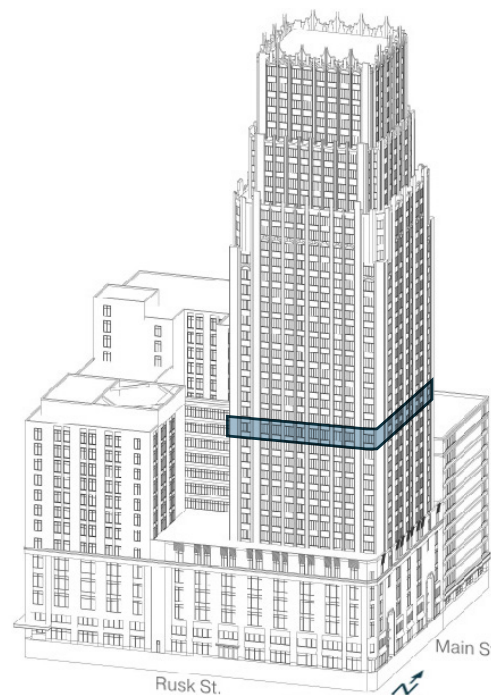
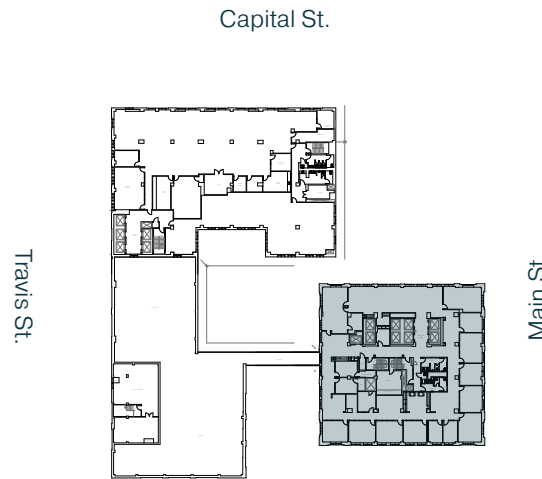
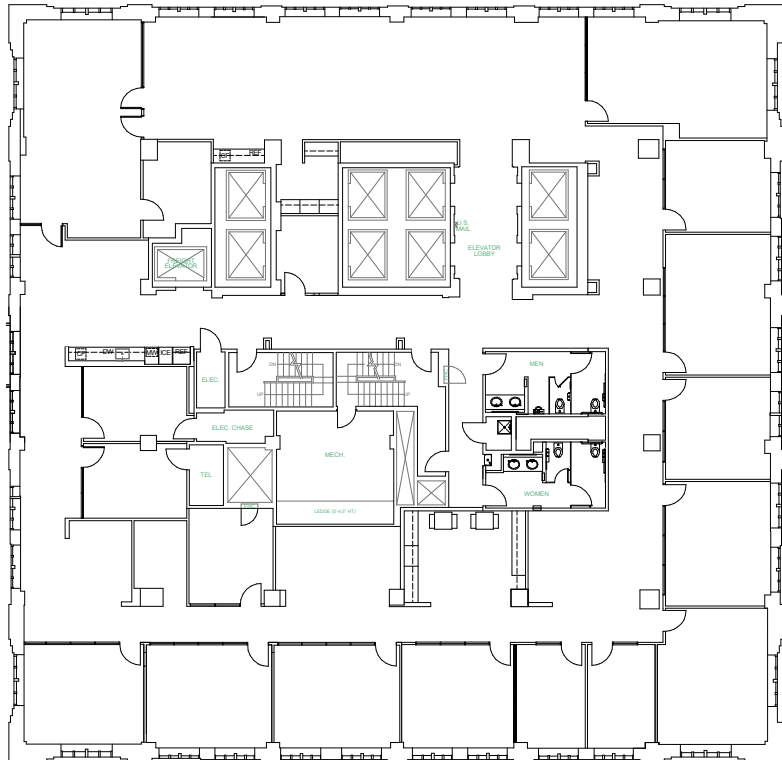
All dimensions and conditions are approximate and for information only.

Level 14 Suite 1400

Full Floor
11,455 SF Office



jonesonmain.com



partners

VINCE STRAKE
713 405 7476
vince.strake@partnersrealestate.com

LESLEY RICE
713 275 9611
lesley.rice@partnersrealestate.com

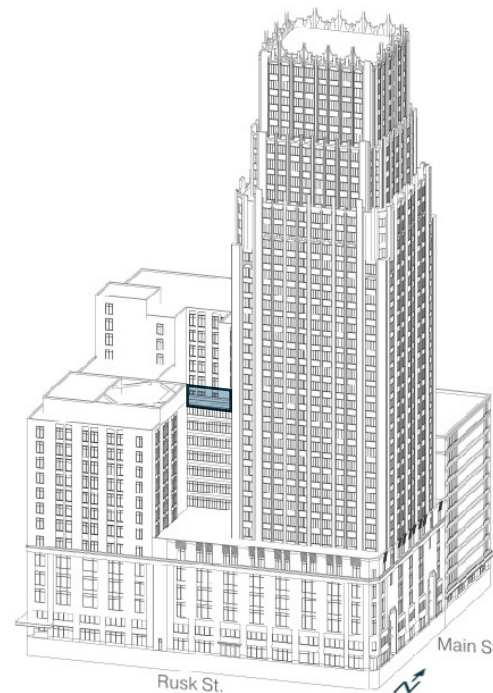
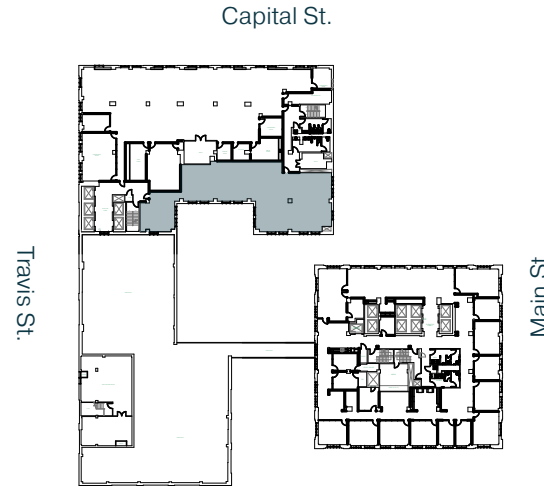
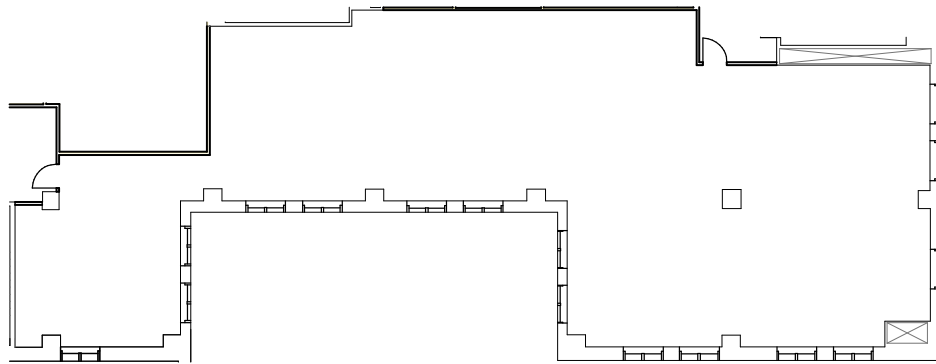
All dimensions and conditions are approximate and for information only.

Level 14 Suite 1420

Partial Floor
4,188 SF Office



jonesonmain.com



partners

VINCE STRAKE
713 405 7476
vince.strake@partnersrealestate.com

LESLEY RICE
713 275 9611
lesley.rice@partnersrealestate.com

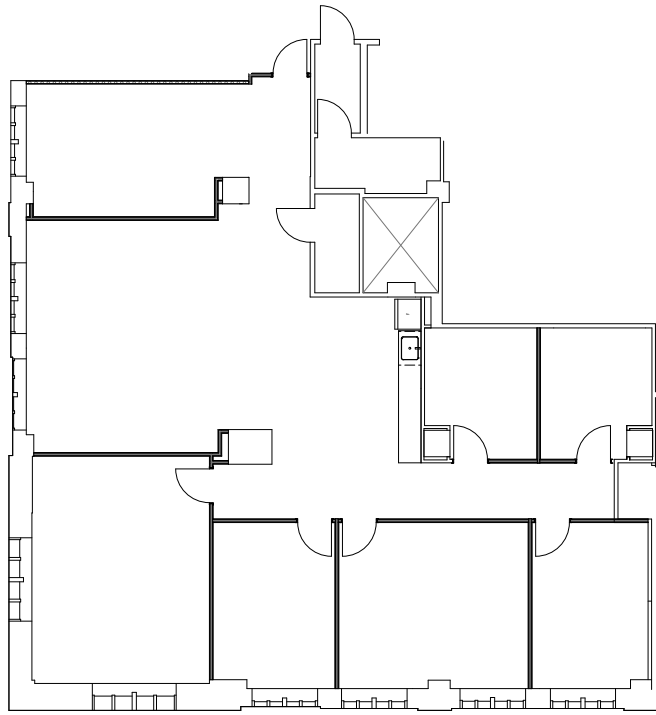
All dimensions and conditions are approximate and for information only.

Level 15 Suite 1515

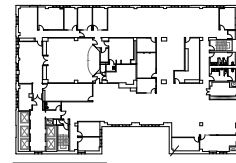
Partial Floor
3,213 SF Office



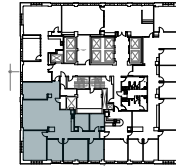
jonesonmain.com



Capital St.



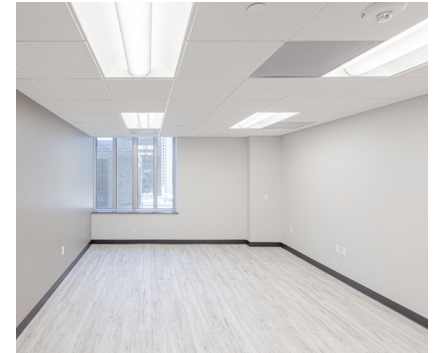
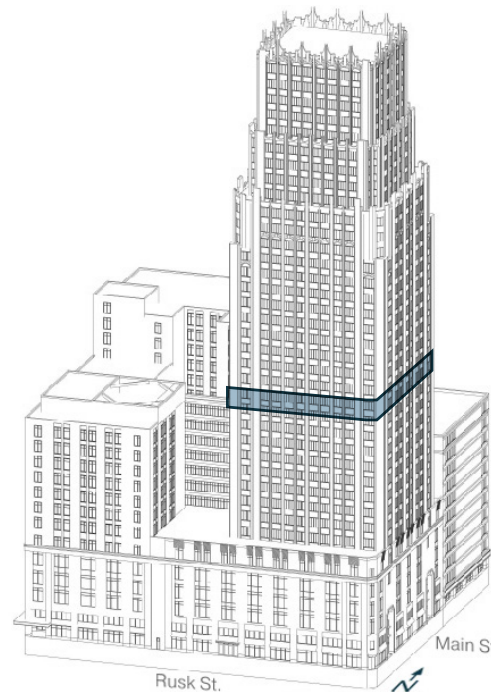
Travis St.



Main St.



Rusk St.



partners

VINCE STRAKE
713 405 7476
vince.strake@partnersrealestate.com

LESLEY RICE
713 275 9611
lesley.rice@partnersrealestate.com

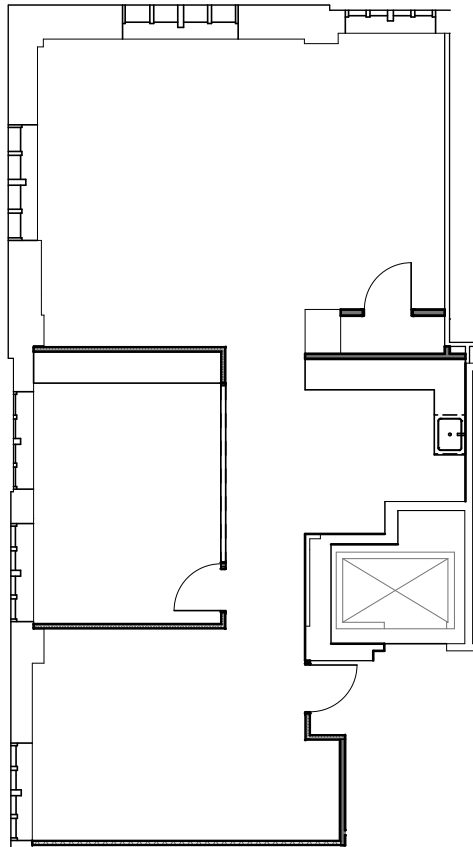
All dimensions and conditions are approximate and for information only.

Level 15 Suite 1550

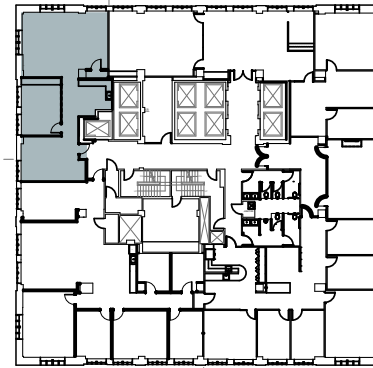
Partial Floor
1,521 SF Office



jonesonmain.com



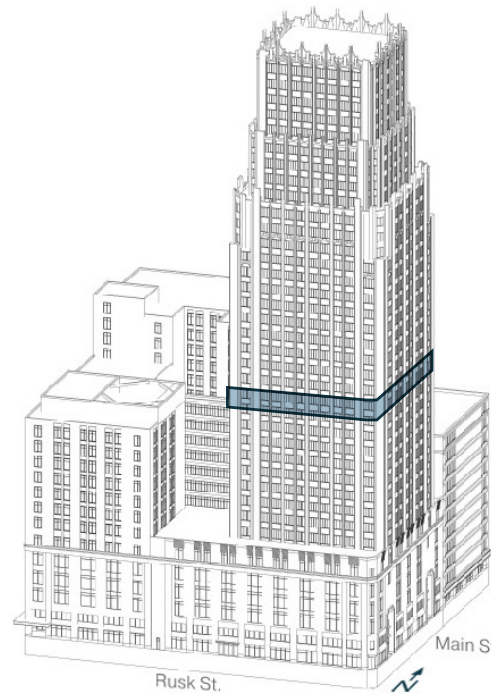
Capital St.



Travis St.

Main St.

Rusk St.



partners

VINCE STRAKE
713 405 7476
vince.strake@partnersrealestate.com

LESLEY RICE
713 275 9611
lesley.rice@partnersrealestate.com

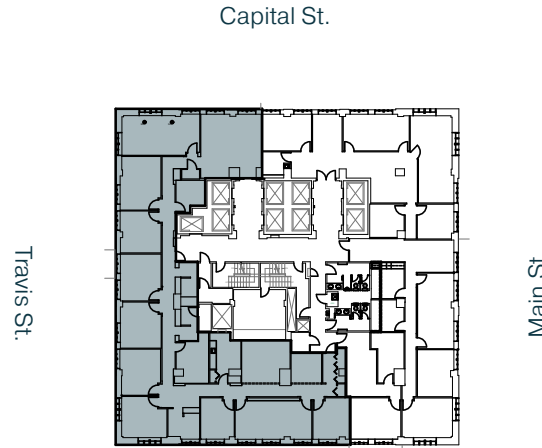
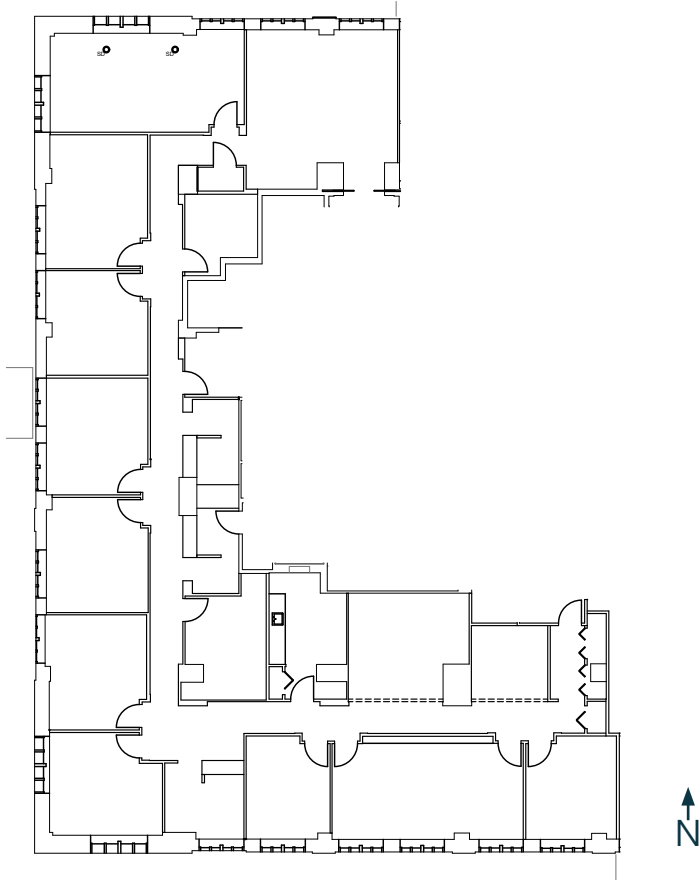
All dimensions and conditions are approximate and for information only.

Level 16 Suite 1600

Partial Floor
5,529 SF Office



jonesonmain.com



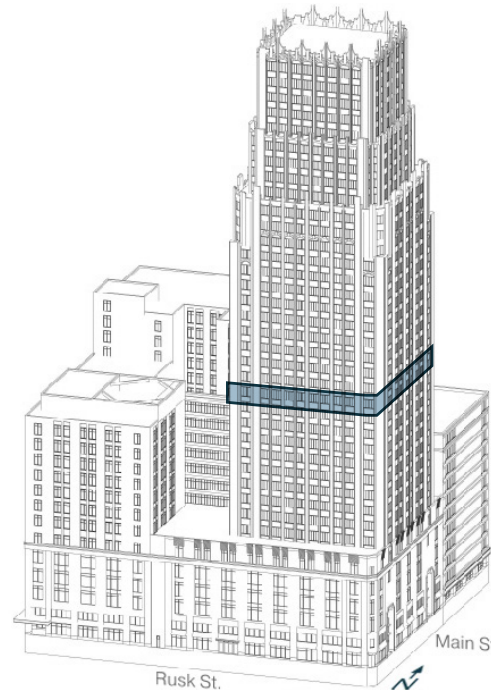
Travis St.

Capital St.

Main St.



Rusk St.



partners

VINCE STRAKE
713 405 7476
vince.strake@partnersrealestate.com

LESLEY RICE
713 275 9611
lesley.rice@partnersrealestate.com

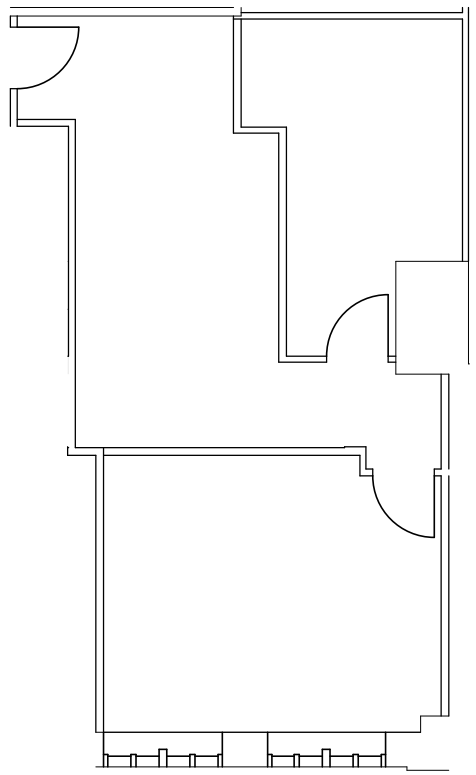
All dimensions and conditions are approximate and for information only.

Level 16 Suite 1610

Partial Floor
790 SF Office

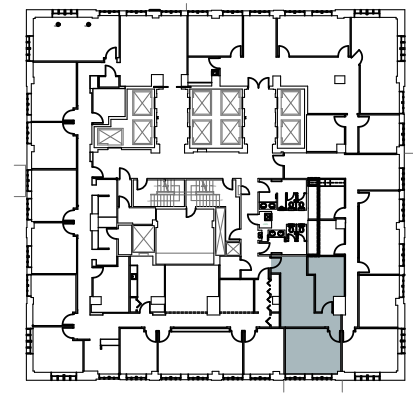


jonesonmain.com



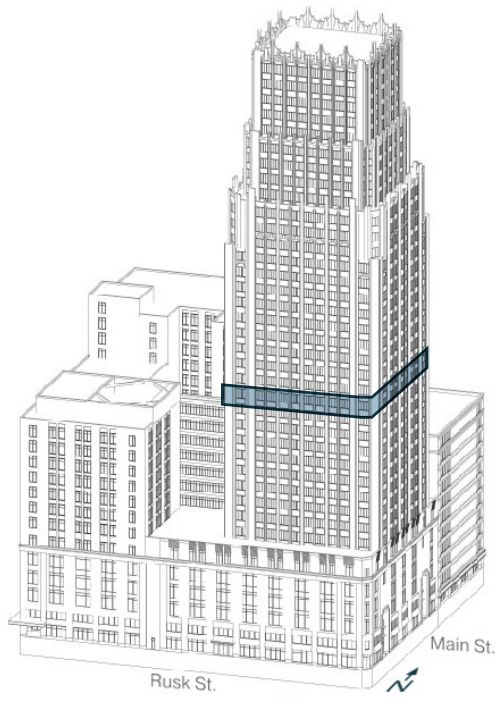
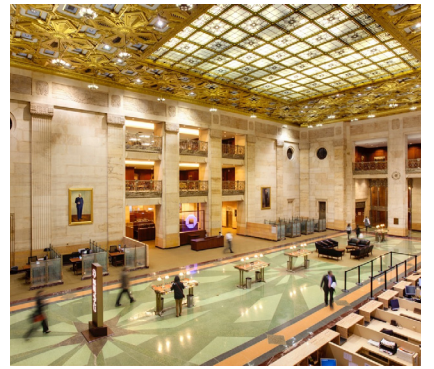
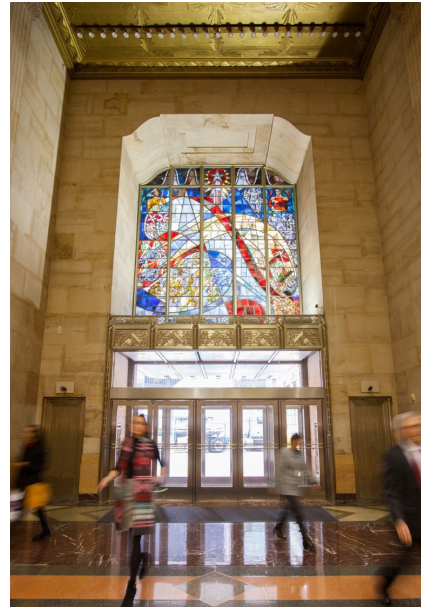
Capital St.

Travis St.



Main St.

Rusk St.



partners

VINCE STRAKE
713 405 7476
vince.strake@partnersrealestate.com

LESLEY RICE
713 275 9611
lesley.rice@partnersrealestate.com

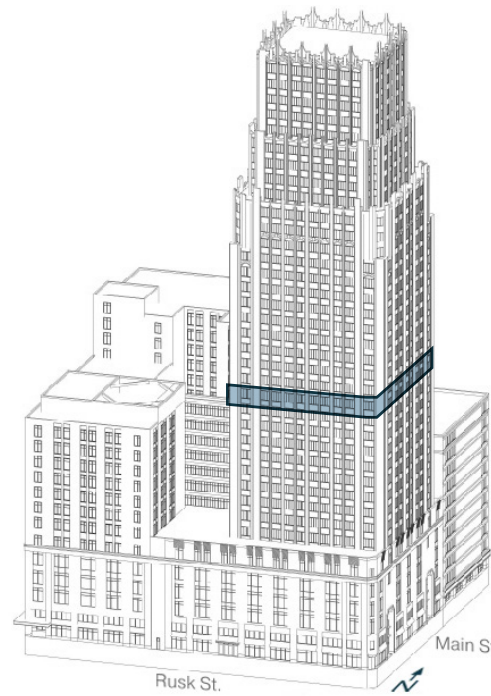
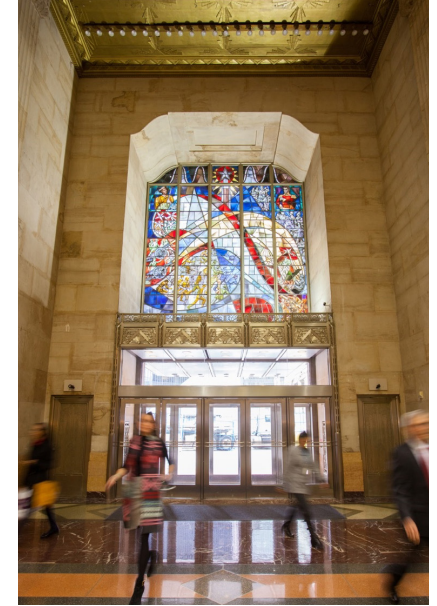
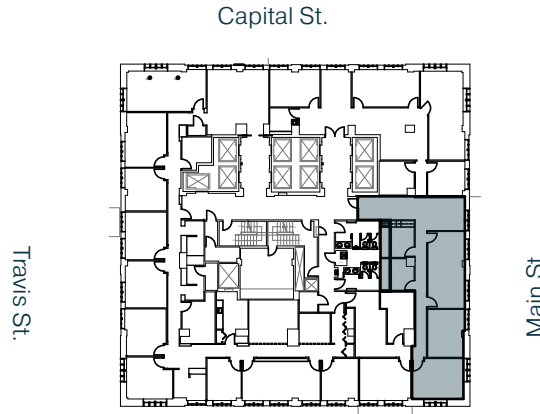
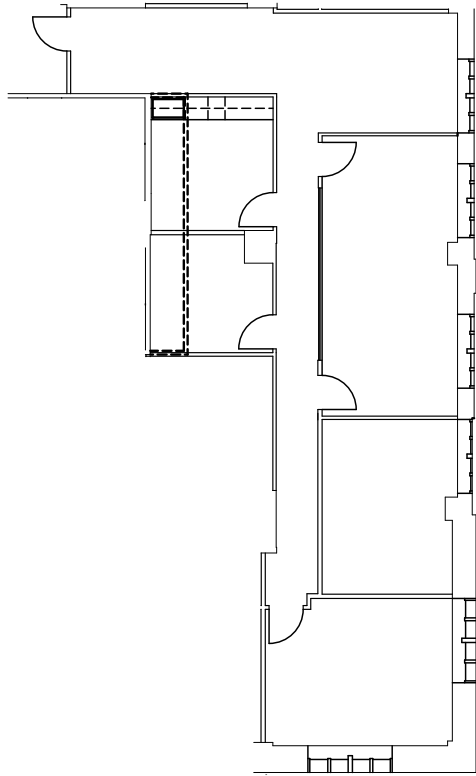
All dimensions and conditions are approximate and for information only.

Level 16 Suite 1625

Partial Floor
1,940 SF Office



jonesonmain.com



partners

VINCE STRAKE
713 405 7476
vince.strake@partnersrealestate.com

LESLEY RICE
713 275 9611
lesley.rice@partnersrealestate.com

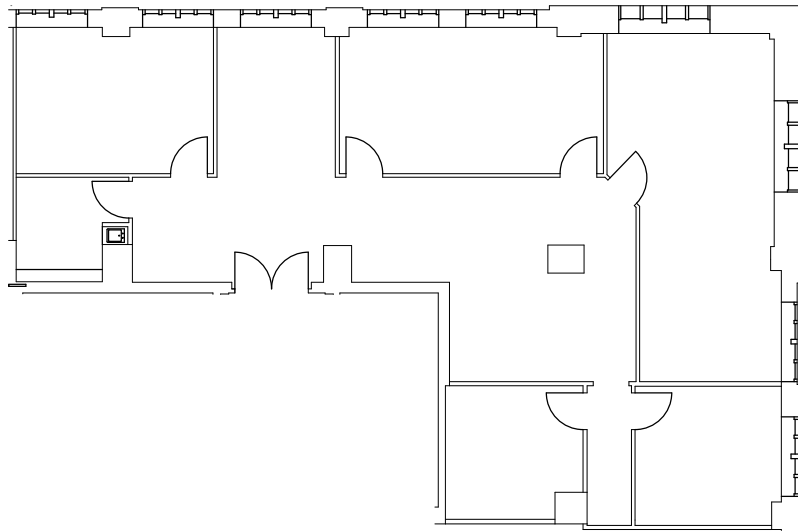
All dimensions and conditions are approximate and for information only.

Level 16 Suite 1650

Partial Floor
2,495 SF Office

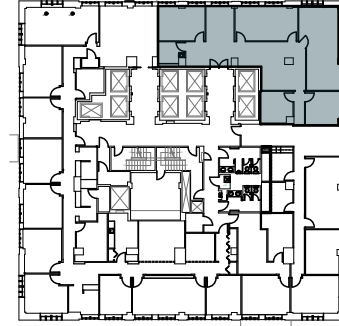


jonesonmain.com



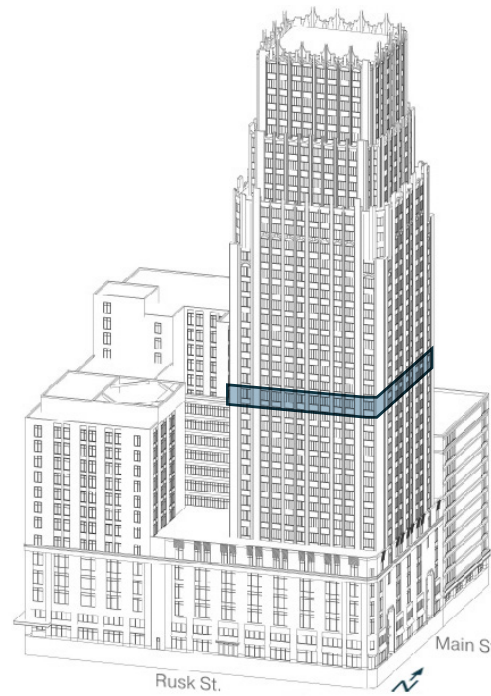
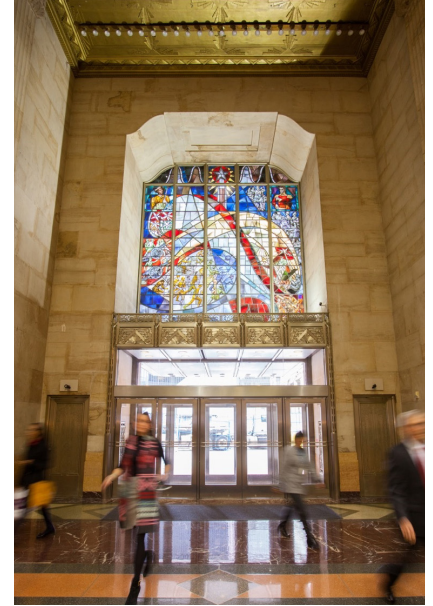
Capital St.

Travis St.



Main St.

Rusk St.



partners

VINCE STRAKE
713 405 7476
vince.strake@partnersrealestate.com

LESLEY RICE
713 275 9611
lesley.rice@partnersrealestate.com

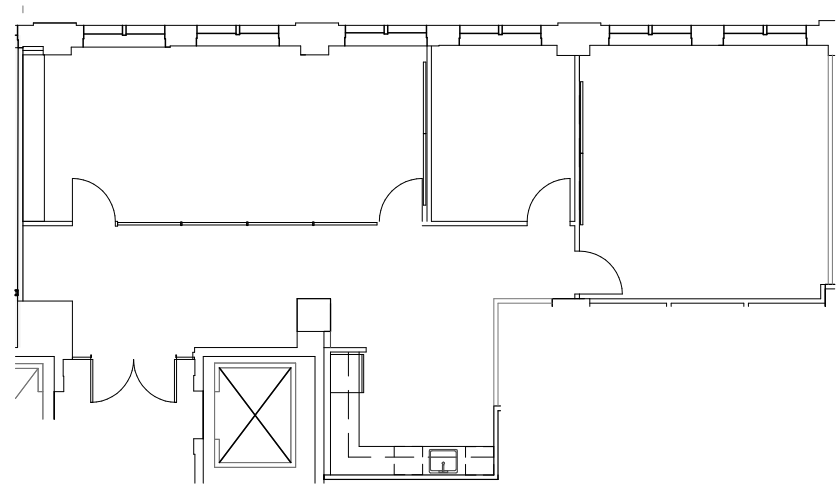
All dimensions and conditions are approximate and for information only.

Level 21 Suite 2100

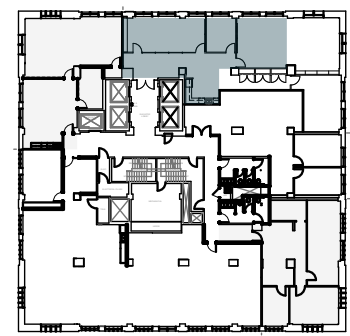
Partial Floor
2,689 SF Office



jonesonmain.com



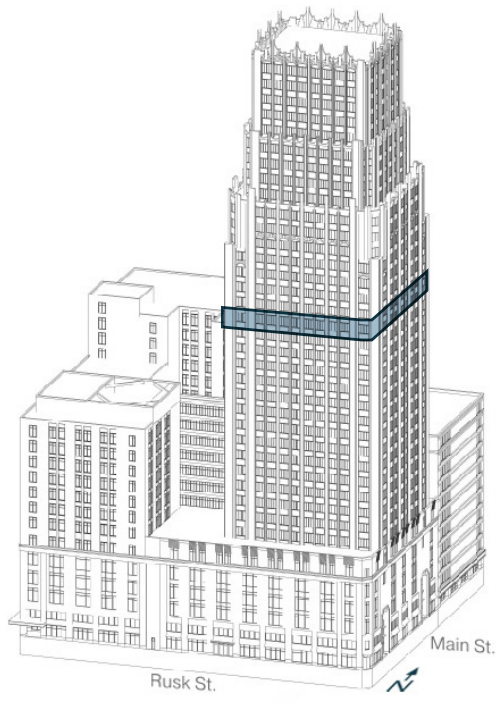
Capital St.



Travis St.

Main St.

Rusk St.



partners

VINCE STRAKE
713 405 7476
vince.strake@partnersrealestate.com

LESLEY RICE
713 275 9611
lesley.rice@partnersrealestate.com

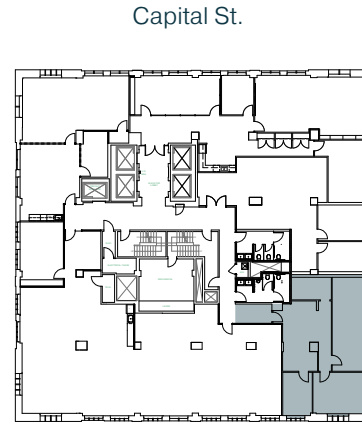
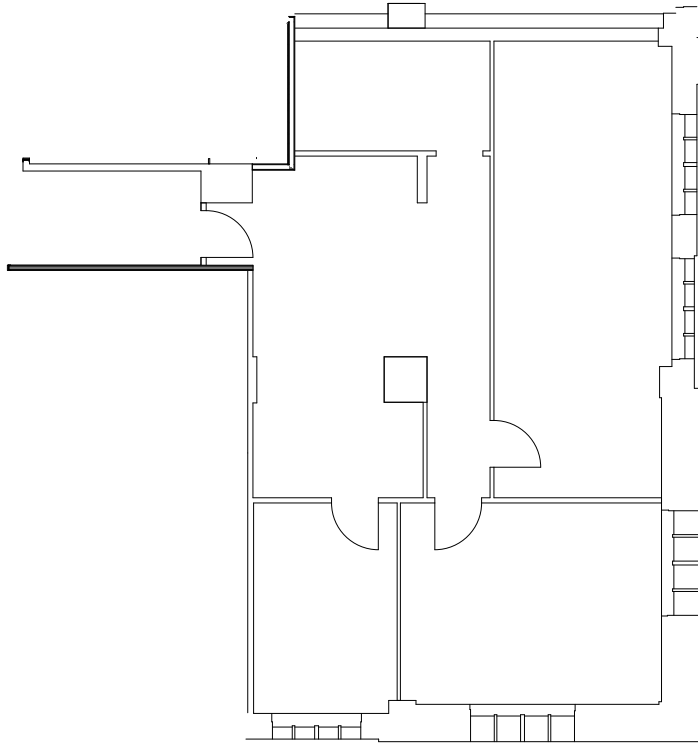
All dimensions and conditions are approximate and for information only.

Level 21 Suite 2110

Partial Floor
1,432 SF Office



jonesonmain.com

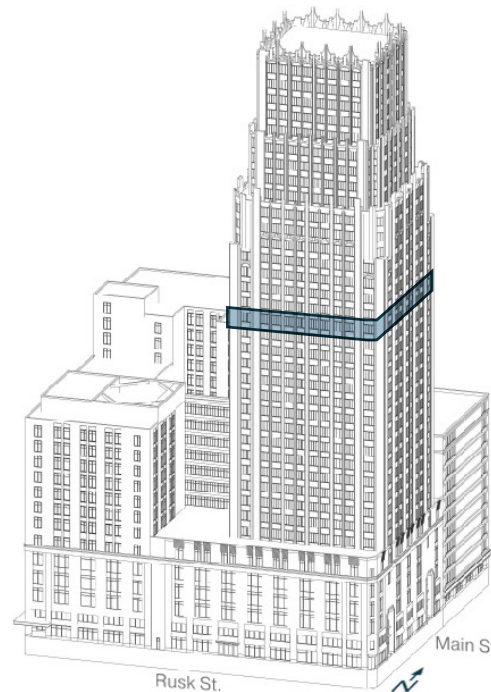


Travis St.

Capital St.

Rusk St.

Main St.



partners

VINCE STRAKE
713 405 7476
vince.strake@partnersrealestate.com

LESLEY RICE
713 275 9611
lesley.rice@partnersrealestate.com

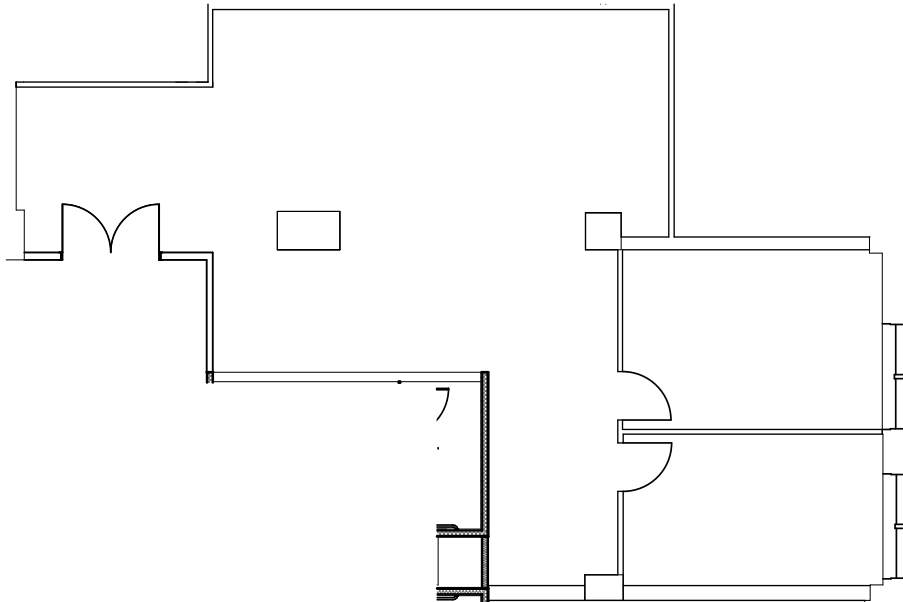
All dimensions and conditions are approximate and for information only.

Level 21 Suite 2120

Partial Floor
1,649 SF Office



jonesonmain.com

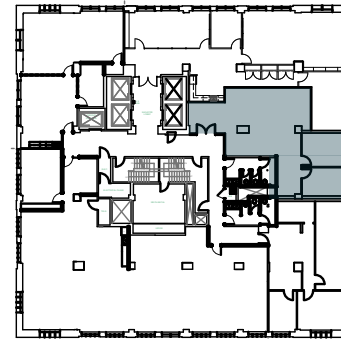


partners

VINCE STRAKE
713 405 7476
vince.strake@partnersrealestate.com

LESLEY RICE
713 275 9611
lesley.rice@partnersrealestate.com

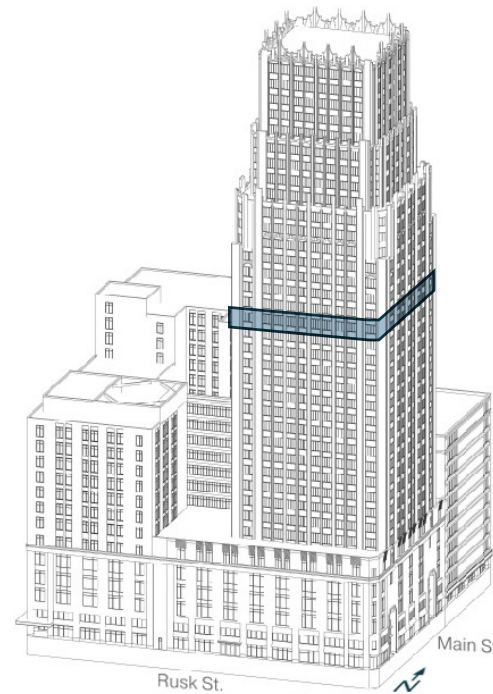
Capital St.



Travis St.

Main St.

Rusk St.



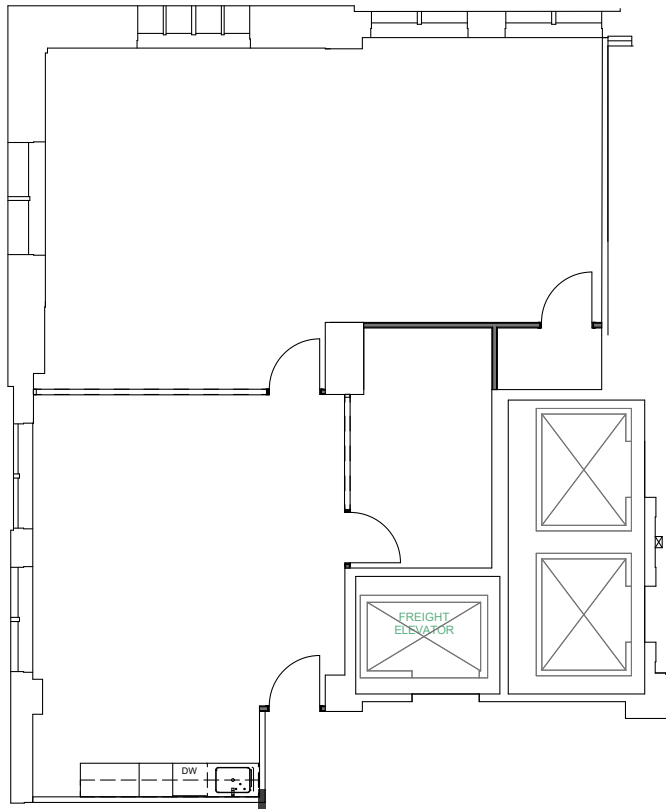
All dimensions and conditions are approximate and for information only.

Level 21 Suite 2130

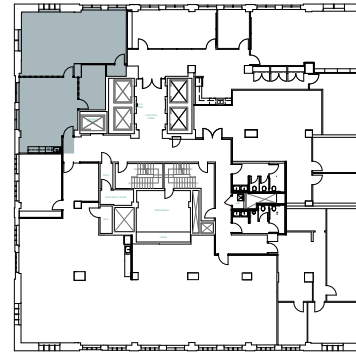
Partial Floor
1,597 SF Office



jonesonmain.com



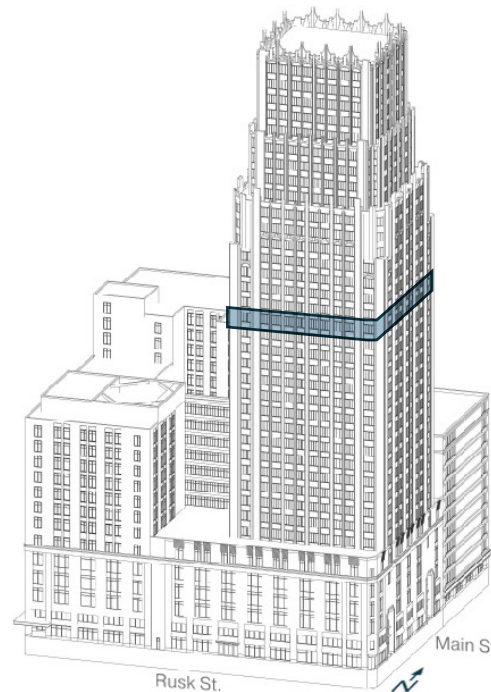
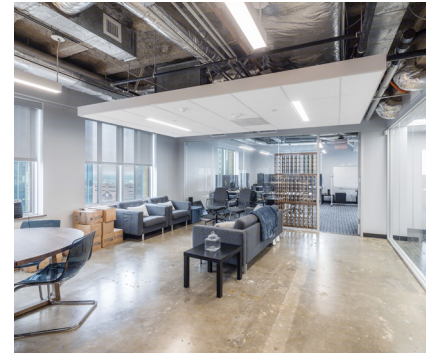
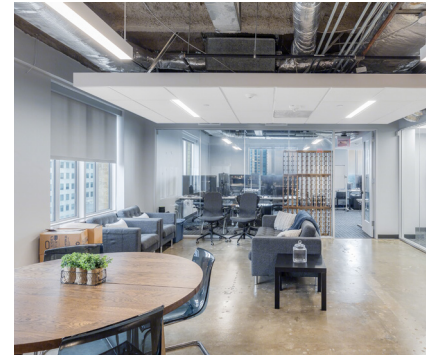
Capital St.



Travis St.

Main St.

Rusk St.



partners

VINCE STRAKE
713 405 7476
vince.strake@partnersrealestate.com

LESLEY RICE
713 275 9611
lesley.rice@partnersrealestate.com

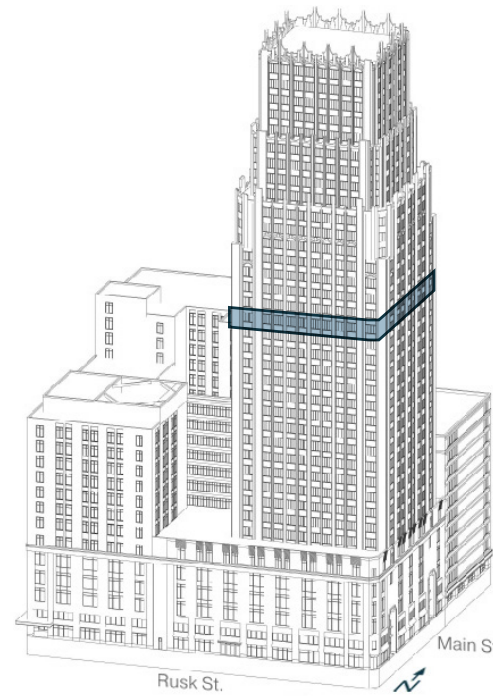
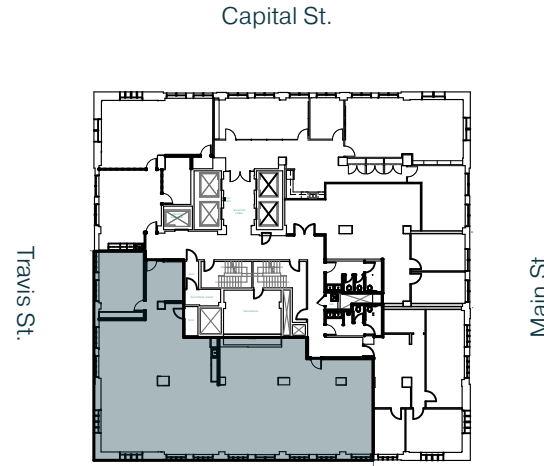
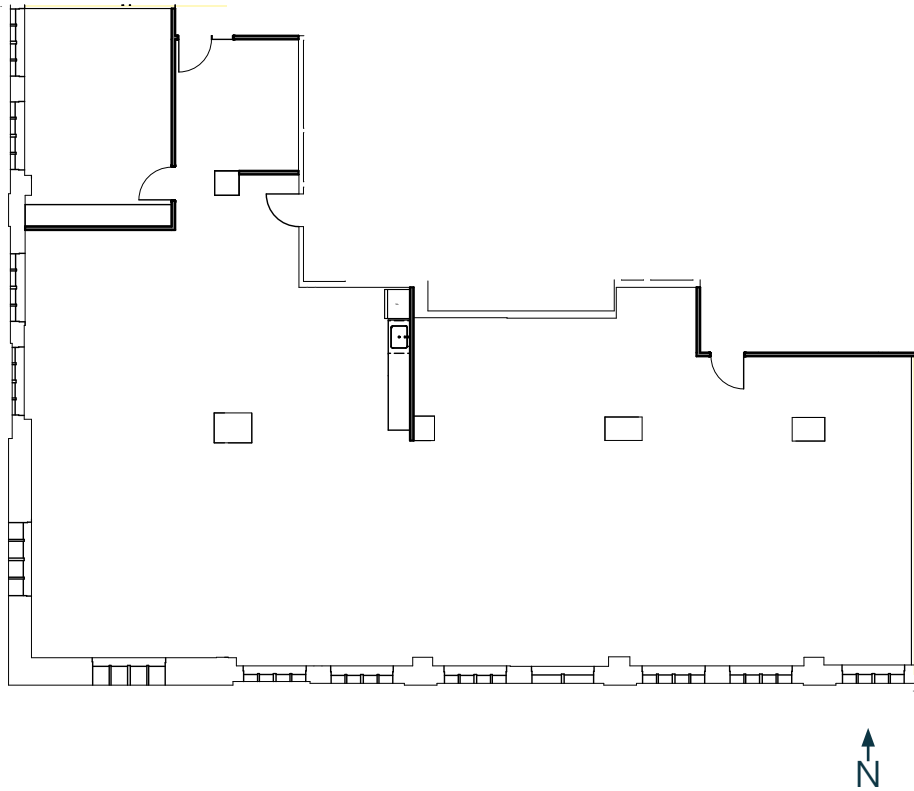
All dimensions and conditions are approximate and for information only.

Level 21 Suite 2150

Partial Floor
4,098 SF Office



jonesonmain.com



partners

VINCE STRAKE
713 405 7476
vince.strake@partnersrealestate.com

LESLEY RICE
713 275 9611
lesley.rice@partnersrealestate.com

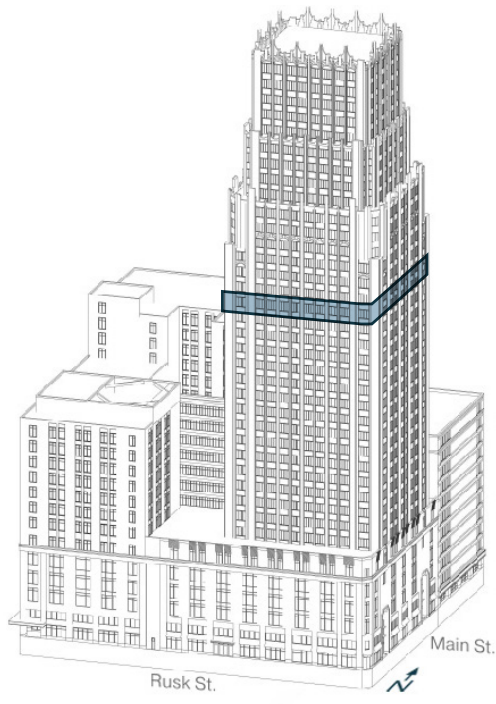
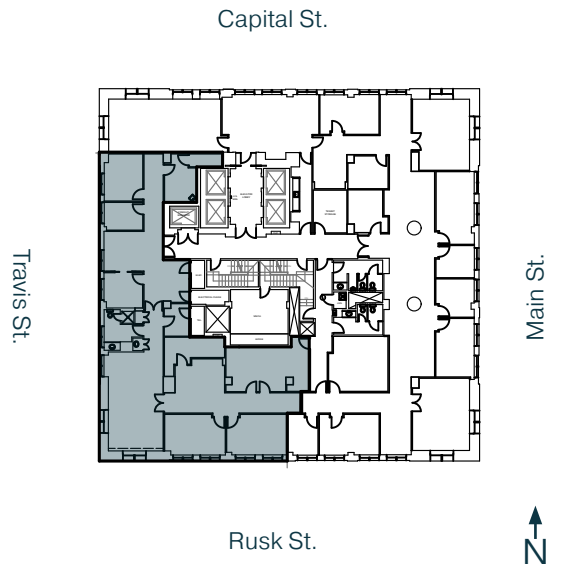
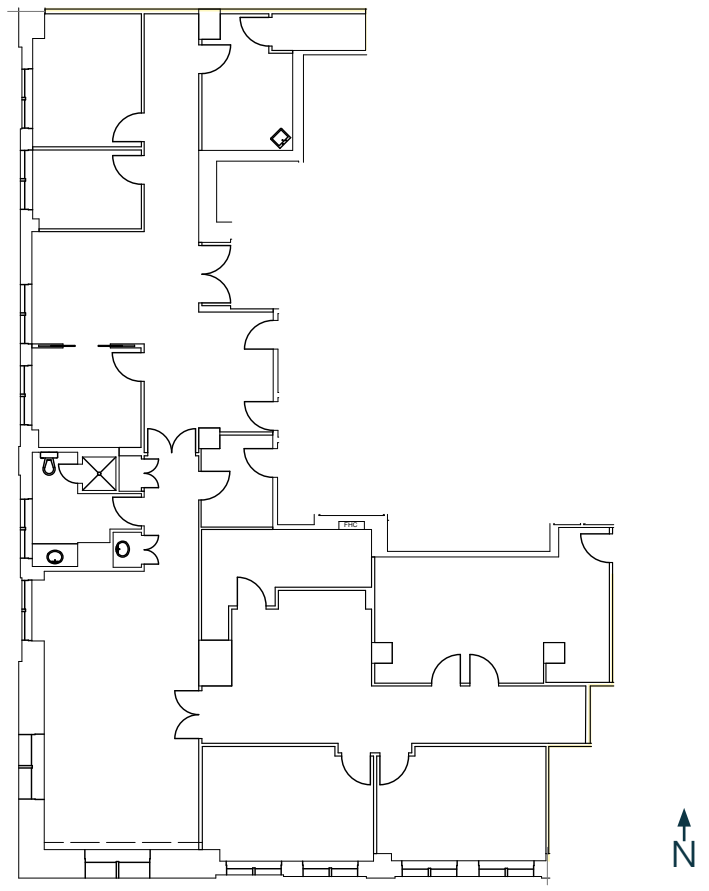
All dimensions and conditions are approximate and for information only.

Level 22 Suite 2210

Partial Floor
4,314 SF Office



jonesonmain.com



partners

VINCE STRAKE
713 405 7476
vince.strake@partnersrealestate.com

LESLEY RICE
713 275 9611
lesley.rice@partnersrealestate.com

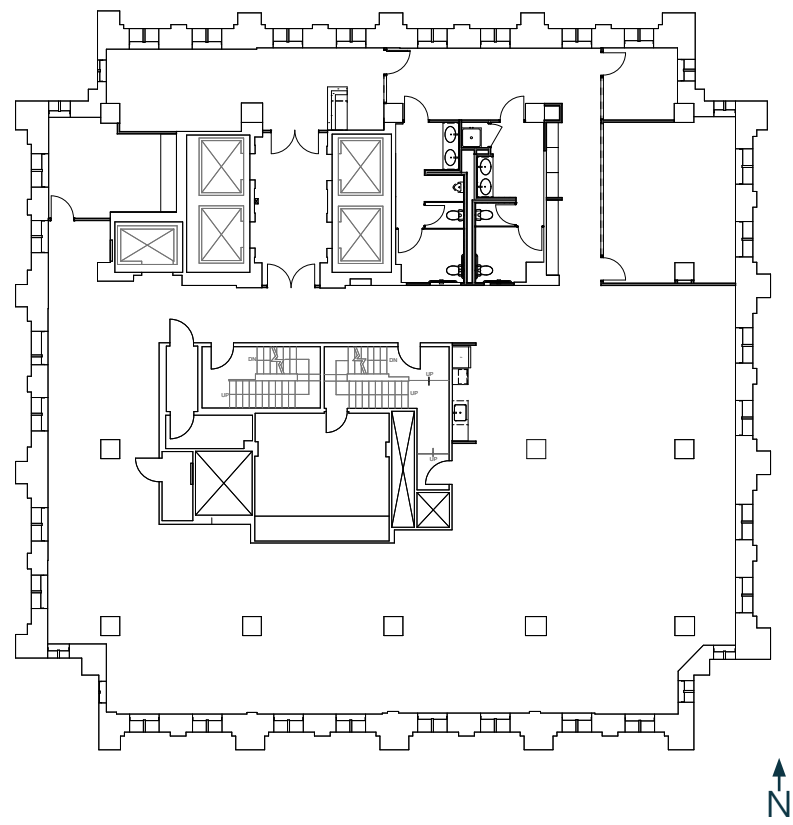
All dimensions and conditions are approximate and for information only.

Level 27 Suite 2700

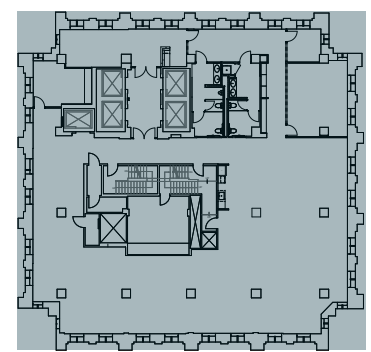
Full Floor
6,674 SF Office



jonesonmain.com



Travis St.

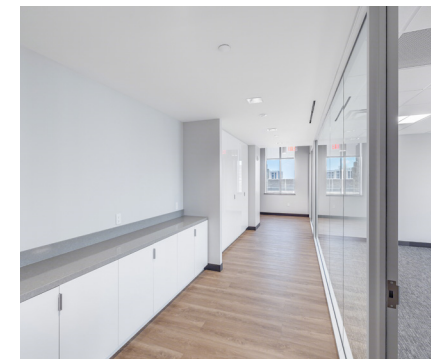
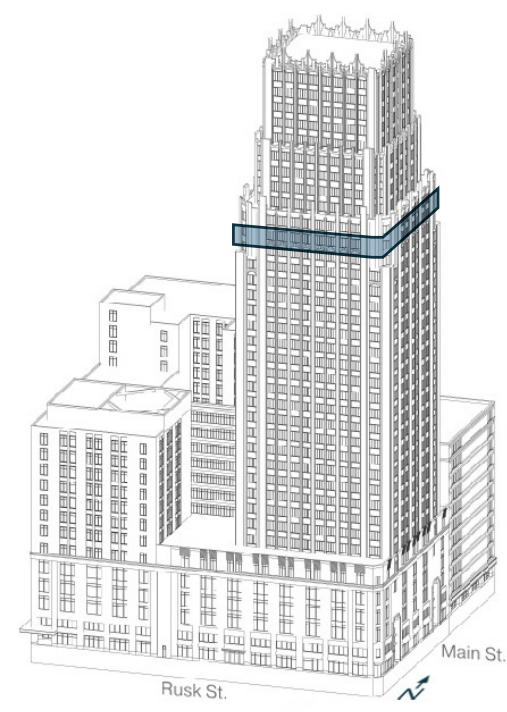


Main St.

Capital St.

Rusk St.

N



All dimensions and conditions are approximate and for information only.

partners

VINCE STRAKE
713 405 7476
vince.strake@partnersrealestate.com

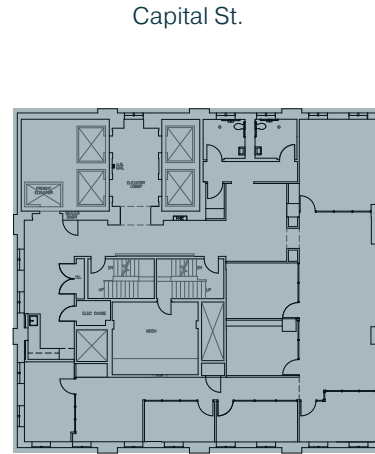
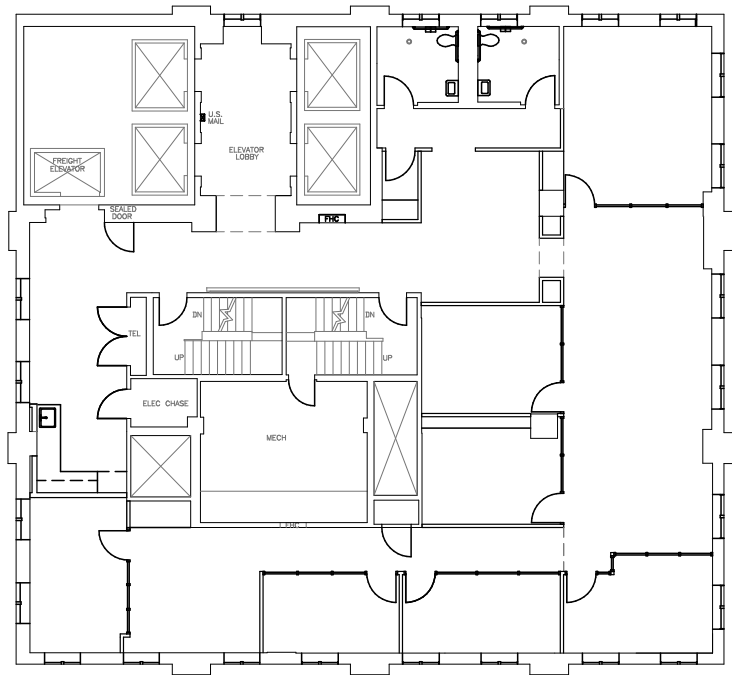
LESLEY RICE
713 275 9611
lesley.rice@partnersrealestate.com

Level 31 Suite 3100

Full Floor
3,989 SF Office



jonesonmain.com

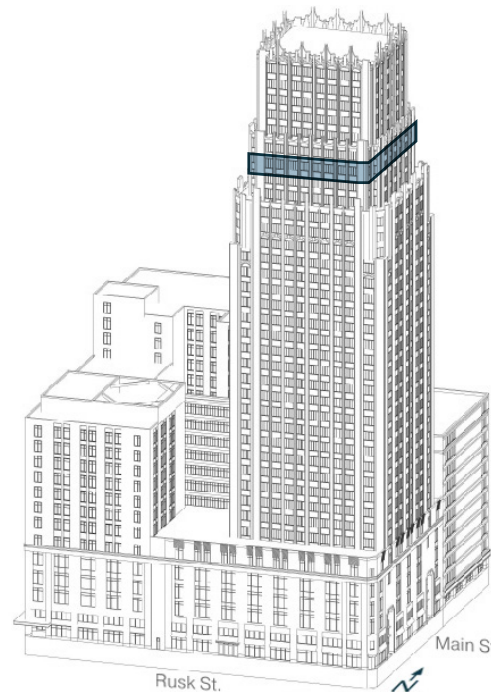
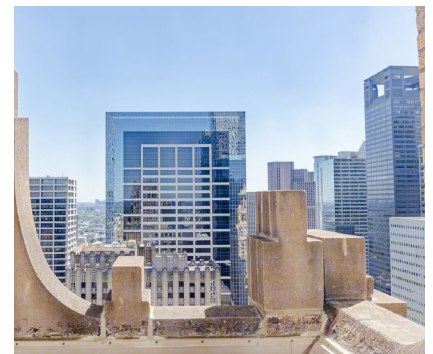
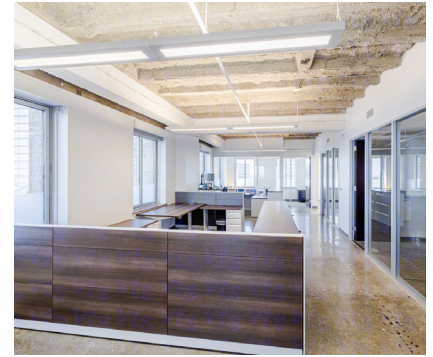


Travis St.

Capital St.

Rusk St.

Main St.



Rusk St.

Main St.

partners

VINCE STRAKE
713 405 7476
vince.strake@partnersrealestate.com

LESLEY RICE
713 275 9611
lesley.rice@partnersrealestate.com

All dimensions and conditions are approximate and for information only.