

BERKELEY OFFICE FOR LEASE



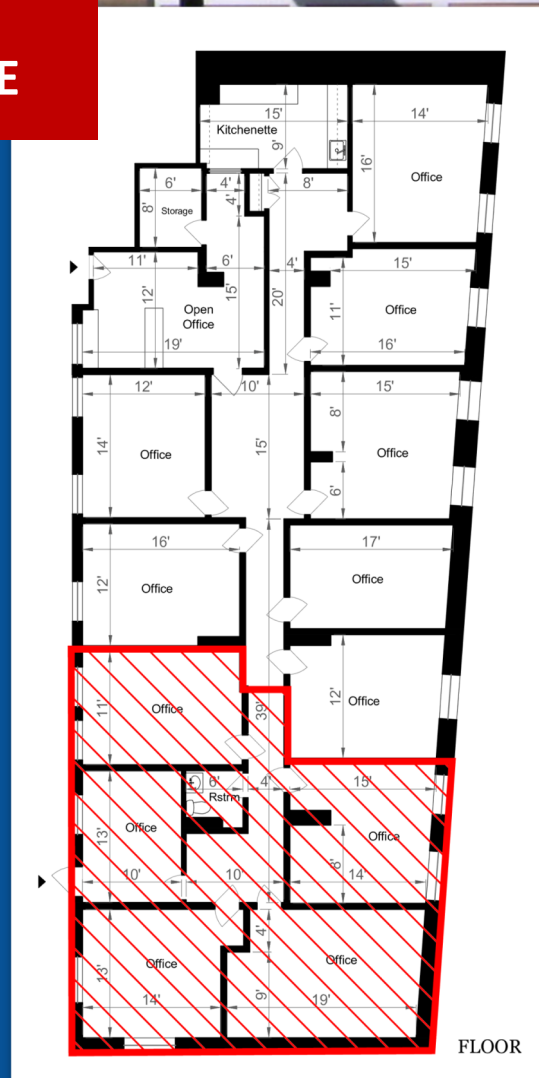
**2041 BANCROFT WAY
BERKELEY**

**\$3.50 PSF
FULL SERVICE**

Suite 307: ±3,235 SF

Seven (7) Large Private Offices
Reception Area
Kitchenette
Copy Work Room
Natural Light in All Offices
Two Blocks to BART

Floor Plans & Photos Attached



FLOOR

Matt Gondak

510-450-1434

mgondak@mrecommercial.com

CA DRE No: 00832220



All information herein is offered in good faith and deemed accurate, but not guaranteed.

2041 BANCROFT WAY | SUITE 307

BERKELEY, CA 94704



**Estimated Total
Square Footage: 3,235 SQ FT**
*Calculated from outside face of exterior walls
and center line of demising walls.*



FLOOR PLAN



