

Office
Space



The 1401 Building

For More Information

John Erixon

+1 305 607 6072

jerixon@naimiami.com

GROUND FLOOR OFFICE SPACE FOR LEASE

1401 SW 1st Street | Miami, FL 33135

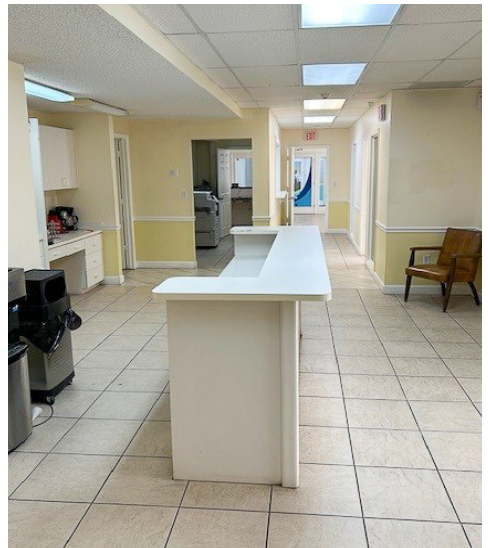
Total Available: 3,309 SF, Available Immediately
Lease Rate & Type: \$31.50 PSF, Modified Gross
Net of Electric and Janitorial

For more listings visit: naimia-ftl.com/properties

NAI Miami
Fort Lauderdale

The 1401 Building

1401 SW 1st Street | Miami, FL 33135



Property Features

- 3,309-SF ground floor office space
- Medical use allowed
- Great exposure with frontage on SW 1st street
- Plenty of parking available behind building
- Signage available

Location Features

- Main corridor to Downtown Miami
- Located on the main bus line
- Thriving East Little Havana
- Walking distance to stores and restaurants



Demographic Summary



RADIUS

1 Mile

3 Miles

5 Miles

Population

67,199

340,310

536,511

Average Household Income

\$61,513

\$104,307

\$107,556

Daytime Employees

23,607

263,768

383,739



Daily Traffic Count

22,000

Cars Per Day



Walkability Score

93

(Walker's Paradise)



9655 South Dixie Highway, Suite 300, Miami, FL 33156

+1 305 938 4000

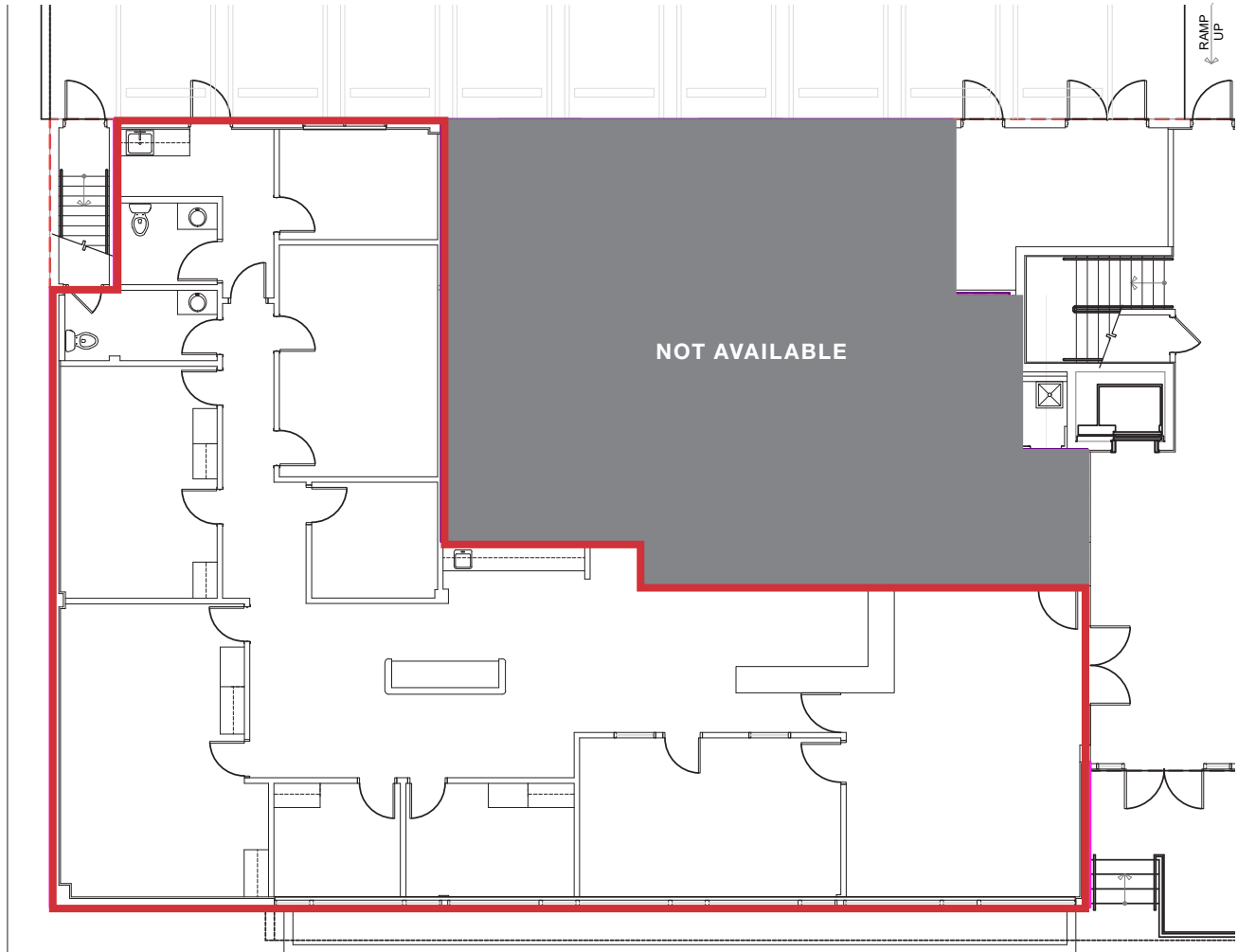
naimia-ftl.com

NO WARRANTY OR REPRESENTATION, EXPRESS OR IMPLIED, IS MADE AS TO THE ACCURACY OF THE INFORMATION CONTAINED HEREIN, AND THE SAME IS SUBMITTED SUBJECT TO ERRORS, OMISSIONS, CHANGE OF PRICE, RENTAL OR OTHER CONDITIONS, PRIOR SALE, LEASE OR FINANCING, OR WITHDRAWAL WITHOUT NOTICE, AND OF ANY SPECIAL LISTING CONDITIONS IMPOSED BY OUR PRINCIPALS NO WARRANTIES OR REPRESENTATIONS ARE MADE AS TO THE CONDITION OF THE PROPERTY OR ANY HAZARDS CONTAINED THEREIN ARE ANY TO BE IMPLIED.

Floor Plan

1401 SW 1st Street | Miami, FL 33135

± 3,309 Square Feet



For More Information

Larry Gautier

+1 305 397 6916

lgautier@naimiami.com

John Erixon

+1 305 607 6072

jerixon@naimiami.com



📍 9655 South Dixie Highway, Suite 300, Miami, FL 33156

📞 +1 305 938 4000

🌐 naimia-ftl.com

NO WARRANTY OR REPRESENTATION, EXPRESS OR IMPLIED, IS MADE AS TO THE ACCURACY OF THE INFORMATION CONTAINED HEREIN, AND THE SAME IS SUBMITTED SUBJECT TO ERRORS, OMISSIONS, CHANGE OF PRICE, RENTAL OR OTHER CONDITIONS, PRIOR SALE, LEASE OR FINANCING, OR WITHDRAWAL WITHOUT NOTICE, AND OF ANY SPECIAL LISTING CONDITIONS IMPOSED BY OUR PRINCIPALS NO WARRANTIES OR REPRESENTATIONS ARE MADE AS TO THE CONDITION OF THE PROPERTY OR ANY HAZARDS CONTAINED THEREIN ARE ANY TO BE IMPLIED.