

# 10

## Forest Avenue Paramus, New Jersey



# S U B L E A S E

## 2,459 SF Ground Floor Suite

### Property Information

- 40,850 SF building
- 2,459 SF suite on ground floor; former physical therapy space
- Three (3) floors with elevator
- Excellent visibility & access to/from Routes 4 and 17
- Sits within close proximity to Hackensack University (2 mi.), The Valley Hospital (6 mi.), Englewood Health (6.3 mi.), and St. Mary's Hospital (10 mi.)

**SUBLEASE  
LEASE TERM ENDS MAY 31, 2028**



**Darren M. Lizzack, MSRE**  
Vice President






201 488 5800 x104  
dlizzack@naihanson.com



**Randy Horning, MSRE**  
Vice President

201 488 5800 x123  
rhorning@naihanson.com

**NAI James E. Hanson**  
COMMERCIAL REAL ESTATE SERVICES, WORLDWIDE

FOLLOW US!      | NJ Offices: Teterboro | Parsippany | [naihanson.com](http://naihanson.com) | Member of NAI Global with 300 Offices Worldwide

#### SERVICES OFFERED

Brokerage • Property Management • Corporate Services • Financing • Logistics • Government Services • Healthcare • Tenant Representation • Cold Storage • Investment Services

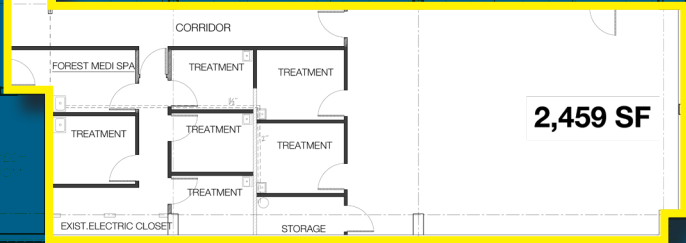
The information contained herein has been obtained from sources considered to be reliable, but no guarantee of its accuracy is made by NAI James E. Hanson

# 10

Forest Avenue  
Paramus, New Jersey

4,479 SF

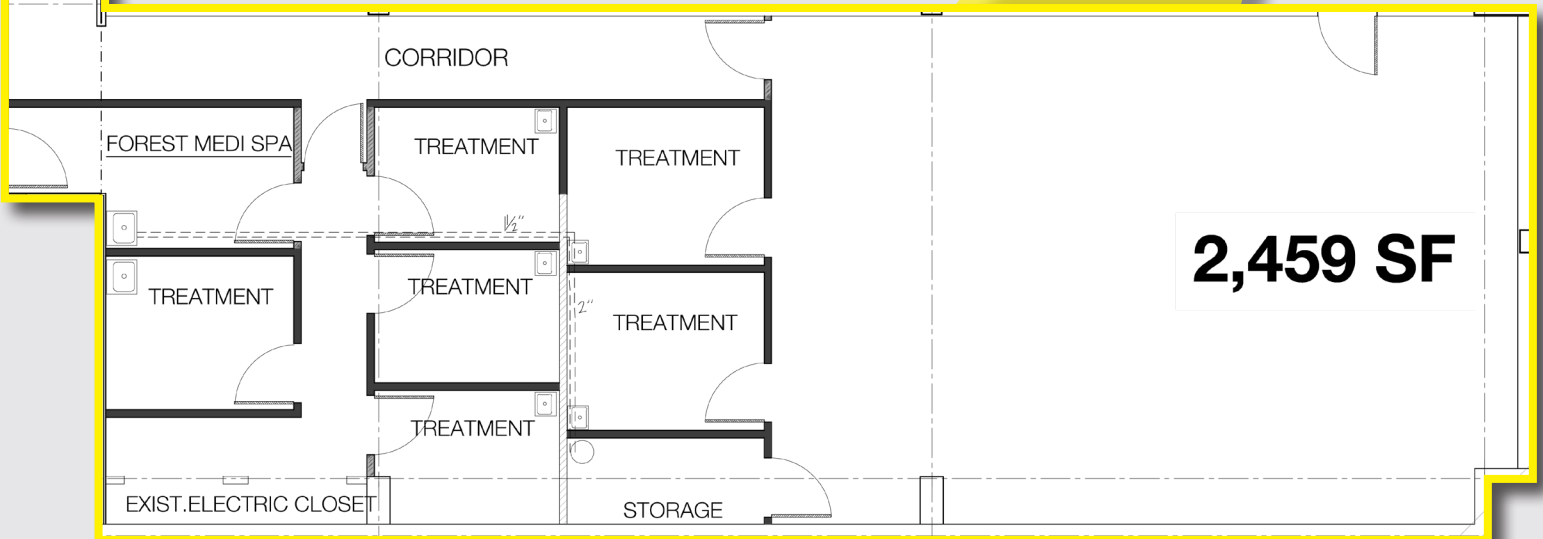
NEW BYPASS CORR.



## Floor Plan: Ground Floor

SUBLEASE  
LEASE TERM ENDS MAY 31, 2028

NEW BYPASS CORR.



**NAI** James E. Hanson  
COMMERCIAL REAL ESTATE SERVICES, WORLDWIDE

### SERVICES OFFERED

Brokerage • Property Management • Corporate Services • Financing • Logistics • Government Services • Healthcare • Tenant Representation • Cold Storage • Investment Services

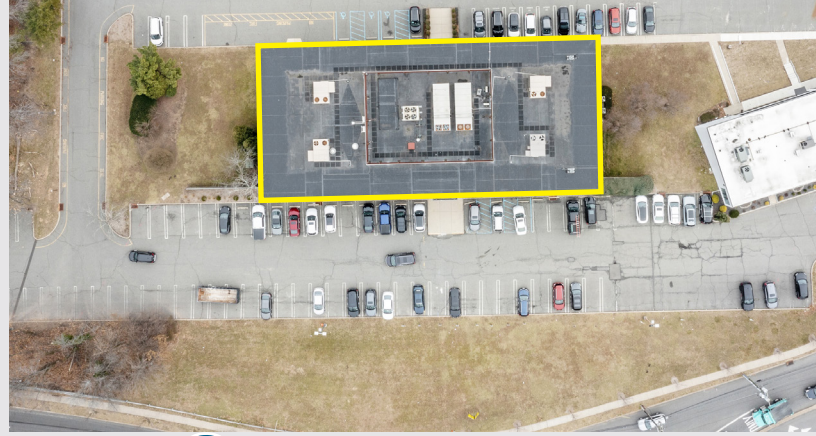
The information contained herein has been obtained from sources considered to be reliable, but no guarantee of its accuracy is made by NAI James E. Hanson

# 10

Forest Avenue  
Paramus, New Jersey



## Ample Parking



**NAI** James E. Hanson  
COMMERCIAL REAL ESTATE SERVICES, WORLDWIDE

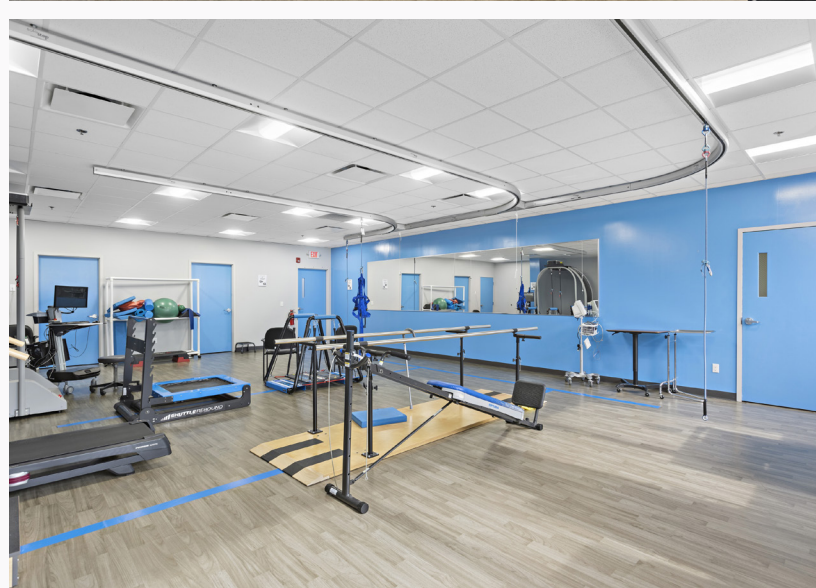
### SERVICES OFFERED

Brokerage • Property Management • Corporate Services • Financing • Logistics • Government Services • Healthcare • Tenant Representation • Cold Storage • Investment Services

The information contained herein has been obtained from sources considered to be reliable, but no guarantee of its accuracy is made by NAI James E. Hanson

# 10

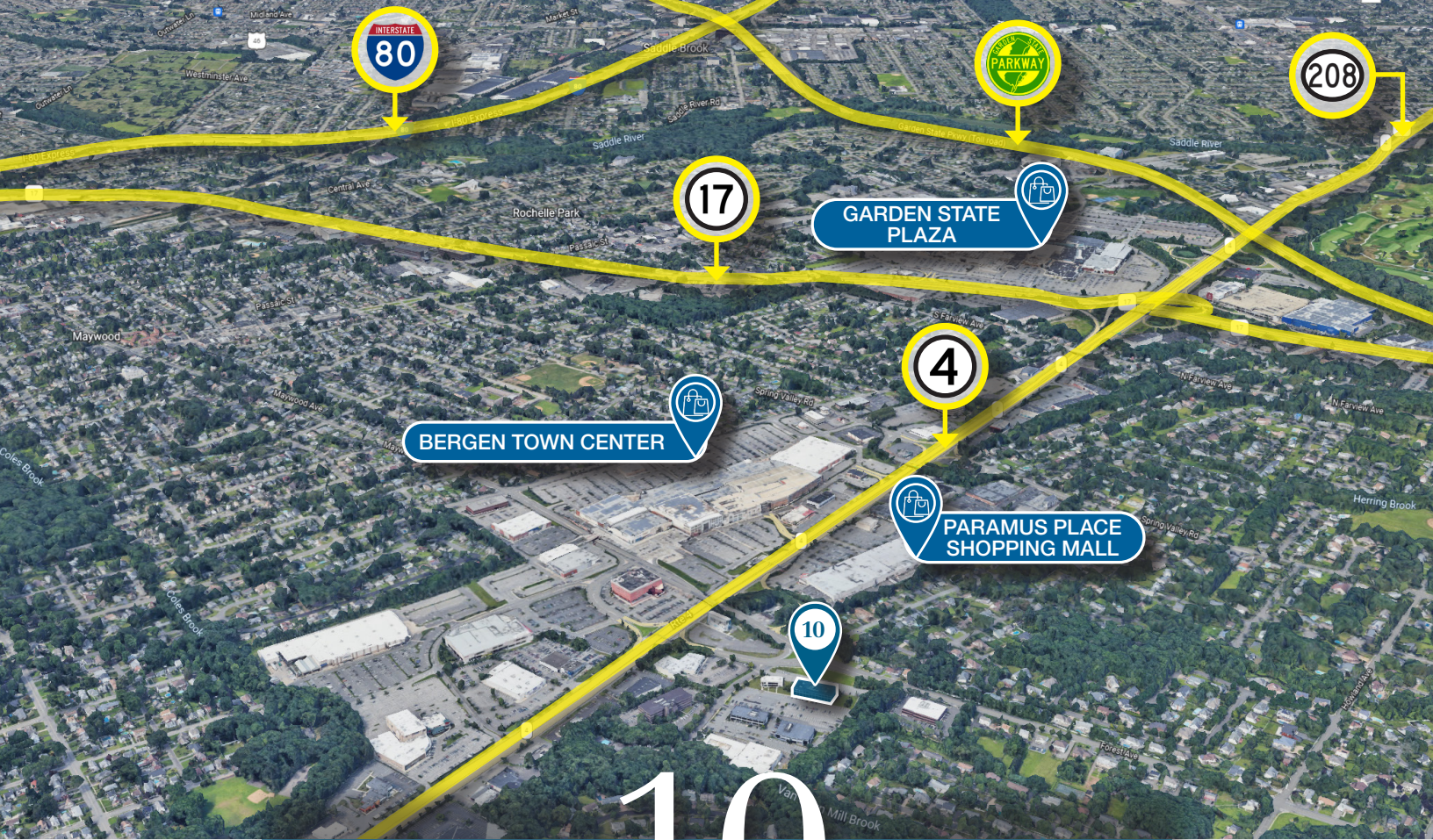
Forest Avenue  
Paramus, New Jersey



# 10

Forest Avenue  
Paramus, New Jersey





# 10 Forest Avenue Paramus, New Jersey

S U B L E A S E

**Darren M. Lizzack, MSRE**  
Vice President

201 488 5800 x104  
dlizzack@naihanson.com



TEAM LIZZACK-HORNING

**Randy Horning, MSRE**  
Vice President

201 488 5800 x123  
rhorning@naihanson.com

**NAI James E. Hanson**

COMMERCIAL REAL ESTATE SERVICES, WORLDWIDE

FOLLOW US! | NJ Offices: Teterboro | Parsippany | naihanson.com | Member of NAI Global with 300 Offices Worldwide

SERVICES OFFERED

Brokerage • Property Management • Corporate Services • Financing • Logistics • Government Services • Healthcare • Tenant Representation • Cold Storage • Investment Services

The information contained herein has been obtained from sources considered to be reliable, but no guarantee of its accuracy is made by NAI James E. Hanson