

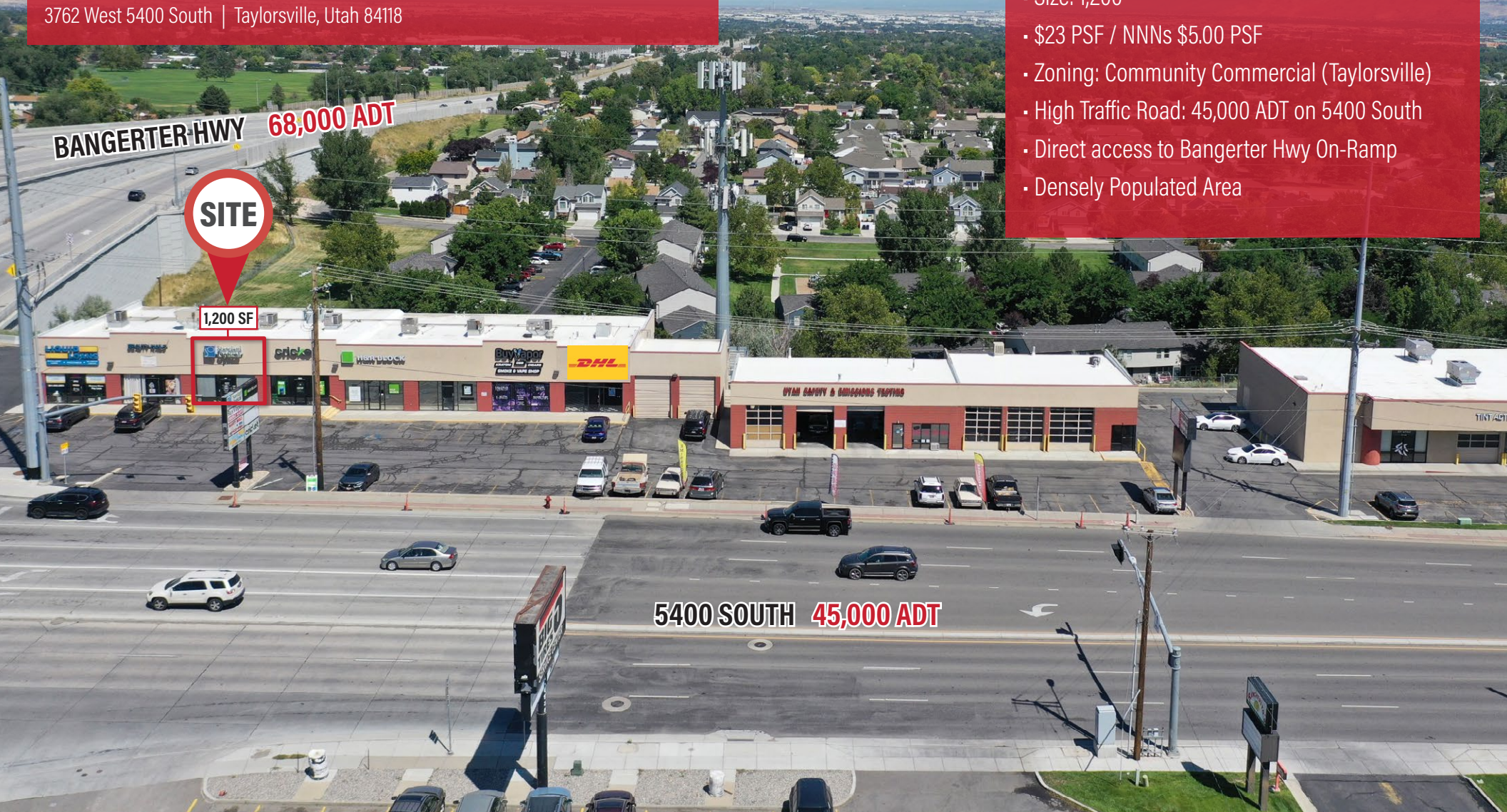
RETAIL FOR LEASE

TAYLOR'S POINTE SHOPPING CENTER

3762 West 5400 South | Taylorsville, Utah 84118

Property Highlights

- Size: 1,200
- \$23 PSF / NNNs \$5.00 PSF
- Zoning: Community Commercial (Taylorsville)
- High Traffic Road: 45,000 ADT on 5400 South
- Direct access to Bangerter Hwy On-Ramp
- Densely Populated Area



JACE BANKHEAD

801.930.6758

jbankhead@legendcommercial.com

CHLOE CYPERS

801.644.6299

ccypers@legendcommercial.com

801.930.6750
www.legendcommercial.com

2180 S 1300 E, Suite 240 | Salt Lake City, UT 84106

PARTNER **XTEAM**
RETAIL ADVISORS

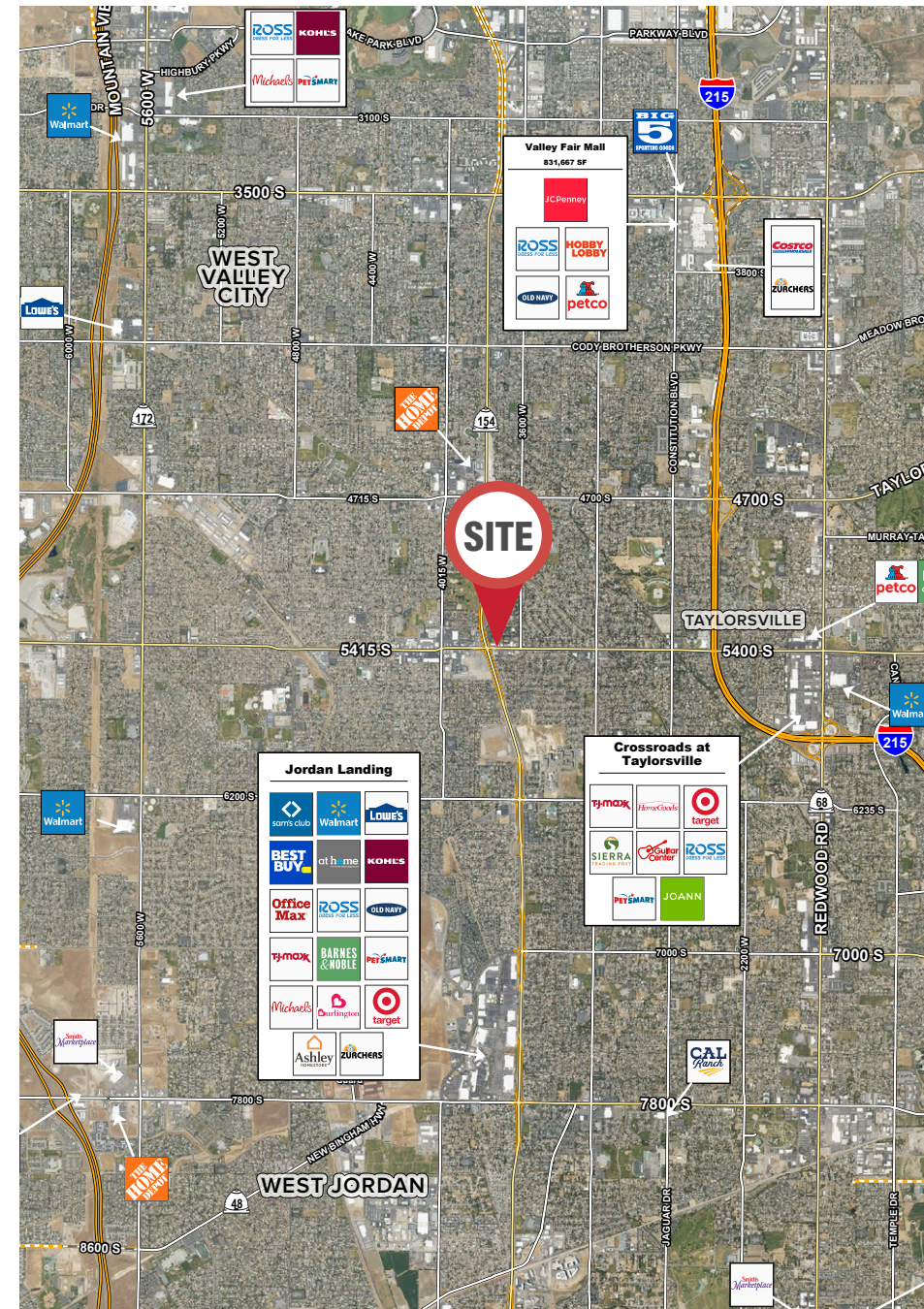


TAYLOR'S POINTE SHOPPING CENTER

3762 West 5400 South | Taylorsville, Utah 84118

DEMOGRAPHICS

	1 MILE	3 MILE	5 MILE
2025 POPULATION	19,511	160,119	359,885
2025 HOUSEHOLDS	6,098	49,635	114,571
2025 AVG HH INCOME	\$114,965	\$116,264	\$114,579
2025 BUSINESSES	320	2,996	10,188
2025 DAYTIME POPULATION	2,657	26,252	120,180



JACE BANKHEAD

801.930.6758

jbankhead@legendcommercial.com

CHLOE CYPERS

801.644.6299

ccypers@legendcommercial.com

801.930.6750
www.legendcommercial.com
2180 S 1300 E, Suite 240 | Salt Lake City, UT 84106

PARTNER XTEAM
RETAIL ADVISORS



TAYLOR'S POINTE SHOPPING CENTER

3762 West 5400 South | Taylorsville, Utah 84118



JACE BANKHEAD

801.930.6758

jbankhead@legendcommercial.com

CHLOE CYPERS

801.644.6299

ccypers@legendcommercial.com

801.930.6750
www.legendcommercial.com

2180 S 1300 E, Suite 240 | Salt Lake City, UT 84106

PARTNER **XTEAM**
RETAIL ADVISORS

