

2710 College Ave Professional Building

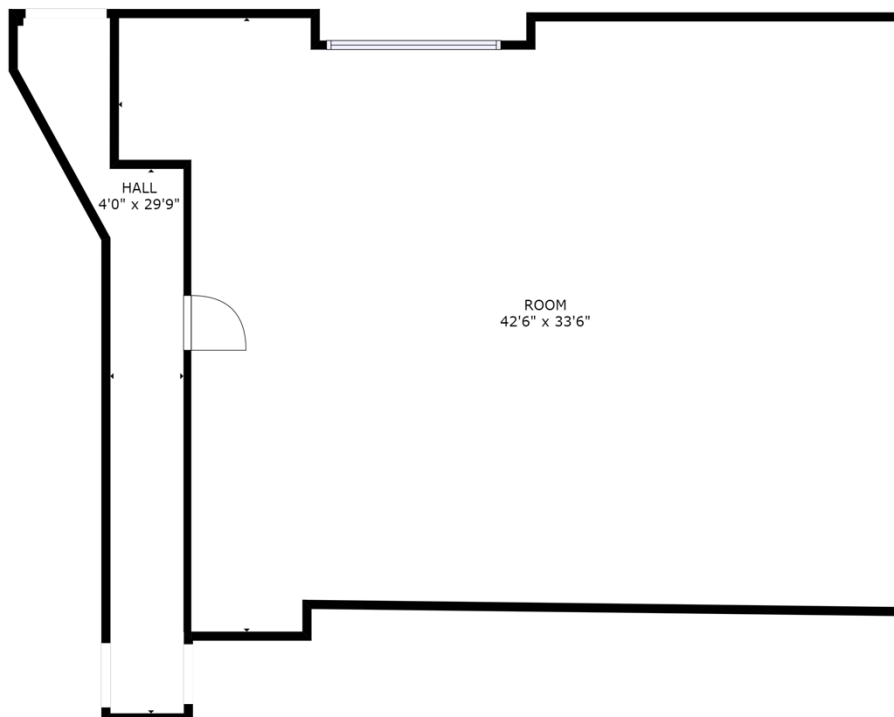
Please see our video of the property by clicking this link:

<https://vimeo.com/567143495>

Suite A and **Suite B** are **LEASED**.

Suite C is 1484 SF. It is all new as well. It rents for \$1780/month and would lend itself to all sorts of businesses. If you need some TI let us know how we can help! Here is the 3D Tour!

<https://my.matterport.com/show/?m=kgj1SFioK9M>

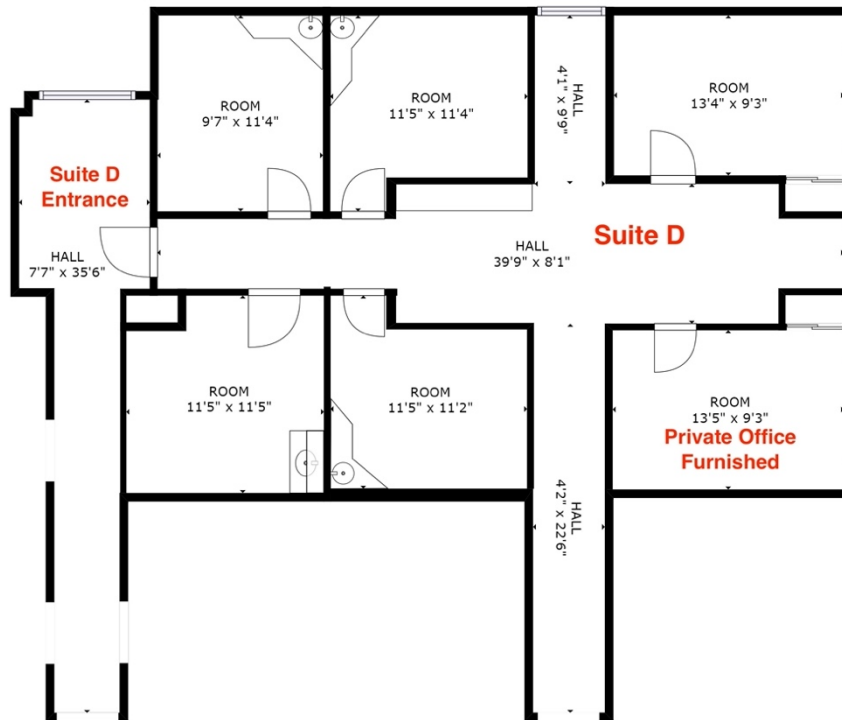


GROSS INTERNAL AREA
FLOOR 1: 1404 sq. ft.
TOTAL: 1404 sq. ft.
SIZES AND DIMENSIONS ARE APPROXIMATE, ACTUAL MAY VARY.



Suite D is formerly a medical practice. So there are two fully furnished executive office spaces as well as a common area and 4 exam rooms with water and sinks. We are prepared to offer you the whole space or just one or more rooms. We can tailor something to meet your exact needs! Here is the 3D tour

<https://my.matterport.com/show/?m=t1Fjb8dayf8>



FLOOR 1

GROSS INTERNAL AREA
FLOOR 1: 1351 sq. ft
TOTAL: 1351 sq. ft
SIZES AND DIMENSIONS ARE APPROXIMATE, ACTUAL MAY VARY.



Suite E is a carbon copy of Suite D. You could combine the two suite and make a large suite or just take over one or rooms for your business. <https://my.matterport.com/show/?m=R6WrzT3cxTy>

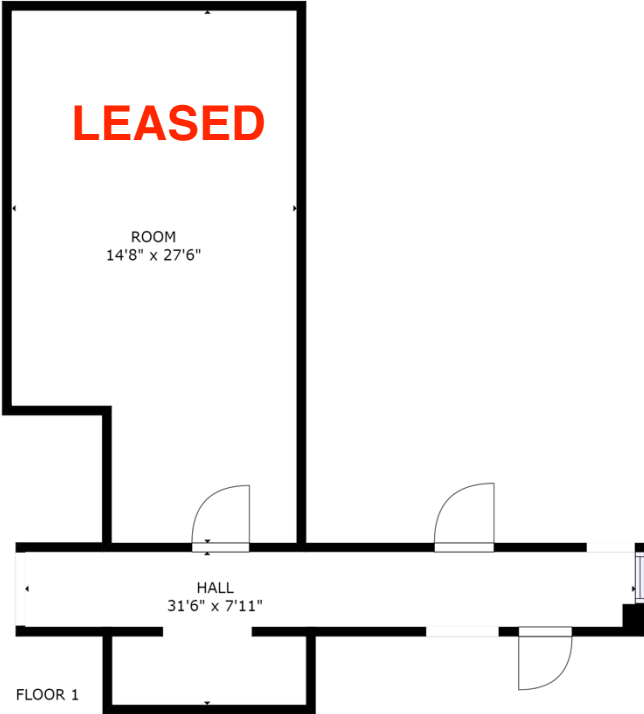


GROSS INTERNAL AREA
FLOOR 1: 1439 sq. ft.
TOTAL: 1439 sq. ft.
SIZES AND DIMENSIONS ARE APPROXIMATE, ACTUAL MAY VARY.



Suite F is a windowless suite and offers the quietest and most private space available. It could be combined with Suite G to make a very large space. It is approximately 400SF and rents for \$650/month.

<https://my.matterport.com/show/?m=YttPt9XbidB>

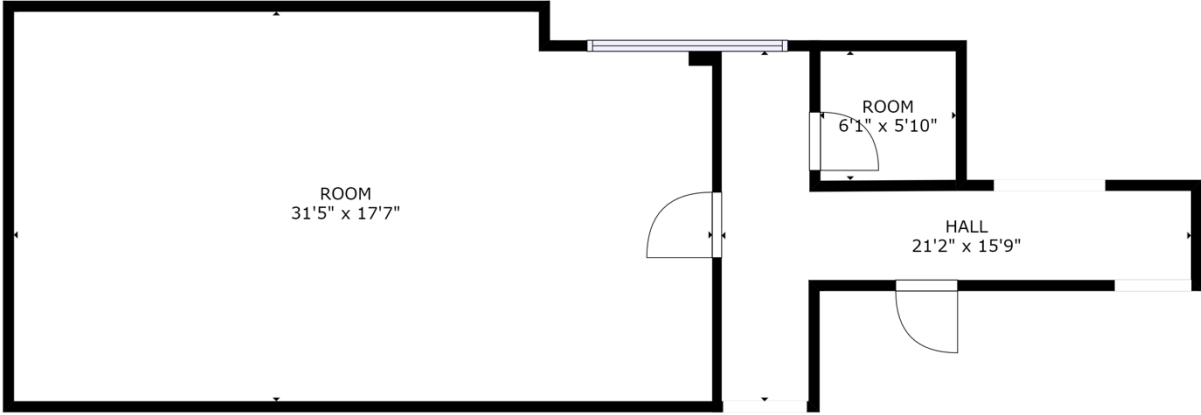


GROSS INTERNAL AREA
FLOOR 1: 367 sq. ft
TOTAL: 367 sq. ft
SIZES AND DIMENSIONS ARE APPROXIMATE, ACTUAL MAY VARY.



Suite G is 567 SF and rents for \$850/month

<https://my.matterport.com/show/?m=aAWr1FfRn71>



FLOOR 1

GROSS INTERNAL AREA
FLOOR 1: 717 sq. ft
TOTAL: 717 sq. ft
SIZES AND DIMENSIONS ARE APPROXIMATE, ACTUAL MAY VARY.

