

FOR LEASE

**5200**

SUITE **170**

**LANKERSHIM BLVD**

NORTH HOLLYWOOD, CA 91601

TURN-KEY  
PRODUCTION STUDIO

**Hennessey**  
**studios**



STRATTONCRE.COM





**5200**  
**LANKERSHIM BLVD**  
NORTH HOLLYWOOD, CA 91601

SUITE **170**

**TURN-KEY  
PRODUCTION STUDIO**

**FOR LEASE - FLEXIBLE TERMS**

**3D TOUR**



**Robert Stratton**

CEO/President - DRE #01182000

**Cell: 661-212-5699**

**Robert@StrattonCRE.com**

The information in this brochure has been obtained from sources believed to be reliable. While we do not doubt its accuracy, we have not verified it and make no guarantee, warranty or representation about it. It is your responsibility to independently confirm its accuracy and completeness.

**STRATTON COMMERCIAL REAL ESTATE, INC.**

**5200 LANKERSHIM BLVD**

**NORTH HOLLYWOOD, CA 91601**

**STRATTONCRE.COM | SINCE 1994**







## OFFERING SUMMARY

# 5200 LANKERSHIM BLVD

## ACADEMY TOWER – SUITE 107

Stratton Commercial Real Estate is proud to present Suite 170 at The Academy Tower, a complete turn-key production studio.

Located on the Television Academy campus in North Hollywood, this 4,515 rentable SF ground-level space delivers everything creators need—no build-out required. Step onto the **29' x 29' pre-lit video stage with full-sized green screen**, three Blackmagic URSA cameras paired with FUJINON 4K glass, and a DMX-driven lighting grid ready for commercials, music videos, virtual sets, and live broadcasts. A **dedicated control room** houses Blackmagic ATEM switching, fiber live-stream capability, and Facilis server storage, while the **adjacent podcast suite** features Shure SM7B microphones, RØDECaster Pro, and multi-camera 4K PTZ capture for broadcast-quality audio and video.

Producers can bring their own crew or tap seasoned engineers on site; **daily, weekly, and long-term leases provide maximum flexibility**. Clients and talent will appreciate Academy Tower's modern lobby, circle-drive drop-off, secured parking, and instant access to the 101 and 170 Freeways.

Bring your vision—Suite 170 is set to roll. For more information or to schedule a tour, please contact Robert Stratton.







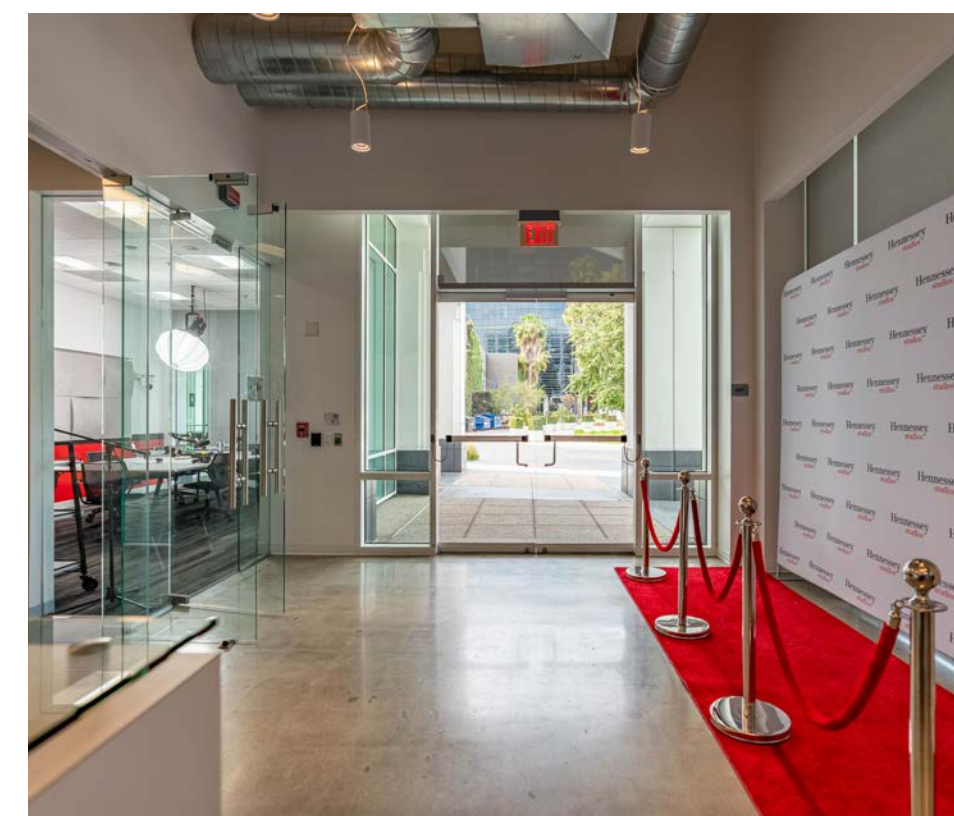
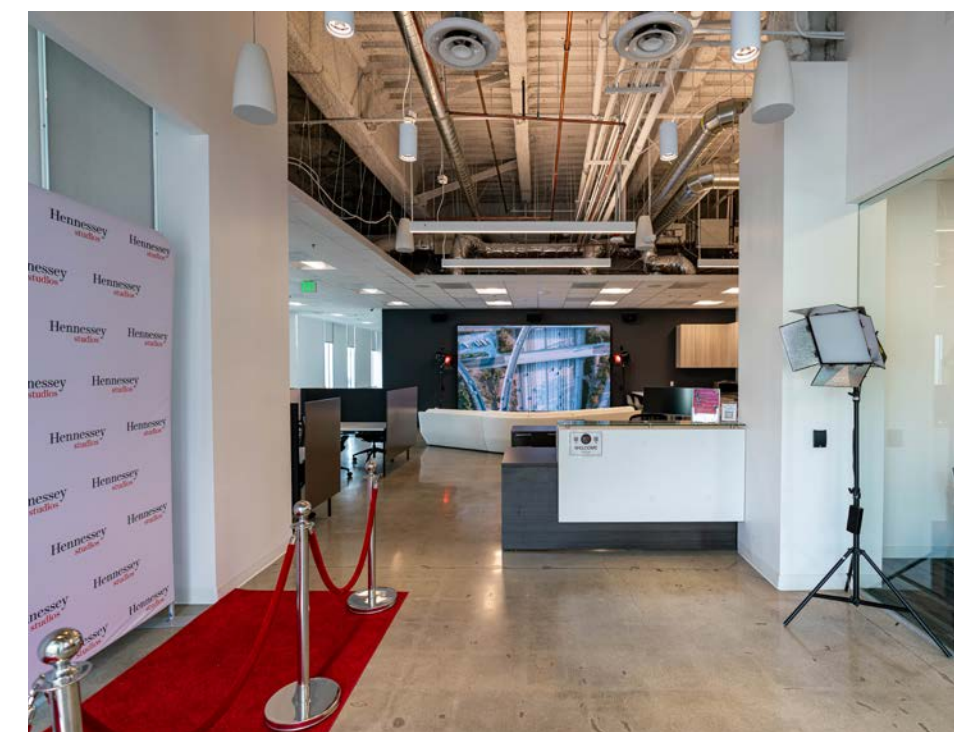


# ENTRY

LOBBY + RECEPTION + GUEST SEATING + LED WALL



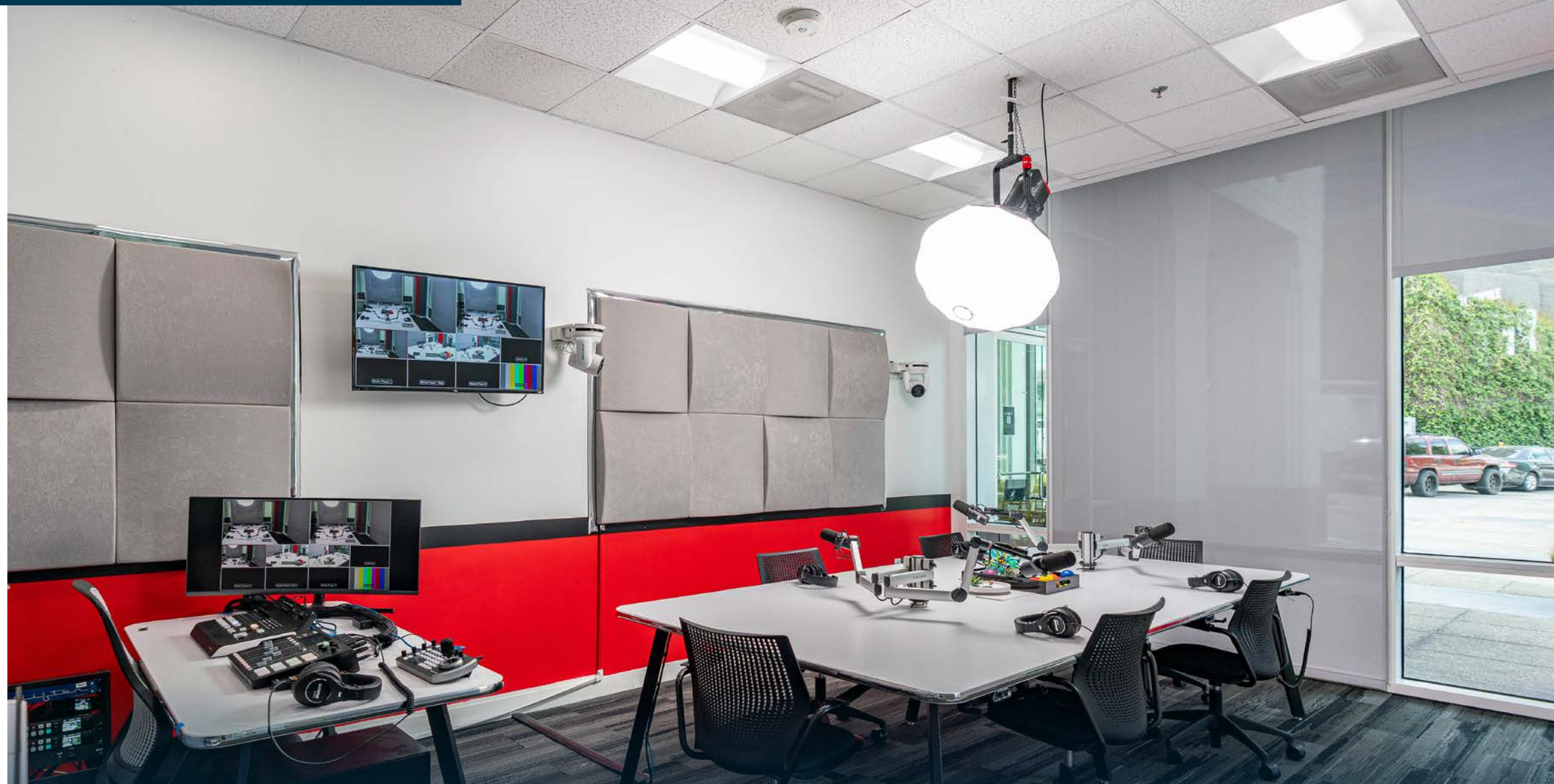
Modern reception with polished concrete floor and guest seating. High-resolution modular LED wall positioned opposite the stage for XR or virtual-set playback, HDR-capable, gen-lock ready for camera tracking, with dedicated media server and HDMI/SDI inputs for real-time 3D environments, look-backs, or client screenings.





# PODCAST STUDIO

LIVE STREAMING + TRI-CAMERA 4K PTZ + CALL-INS

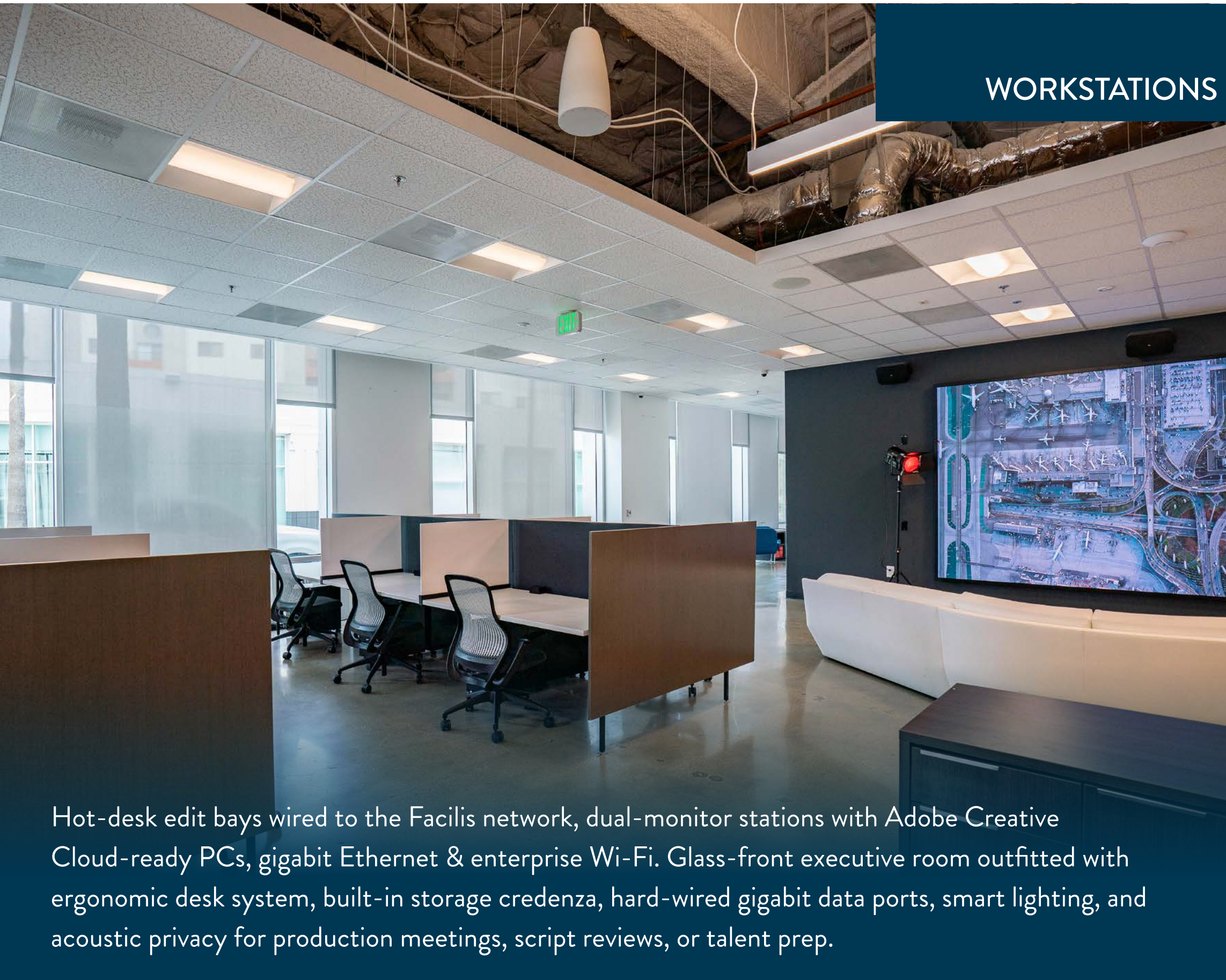


Acoustic-treated suite with a four-seat Knoll table, 4 × Shure SM7B microphones on boom arms with Cloudlifiers, RØDECaster Pro production console, 6 × Shure SRH840 headphones on Henry distribution system, tri-camera 4K PTZ setup tied to a live-production switcher, daylight-balanced key/fill lighting with lantern modifier, call-in and live-stream capability, central AC, Wi-Fi, and adjacent kitchen with fridge, microwave, and ice machine for guest comfort.

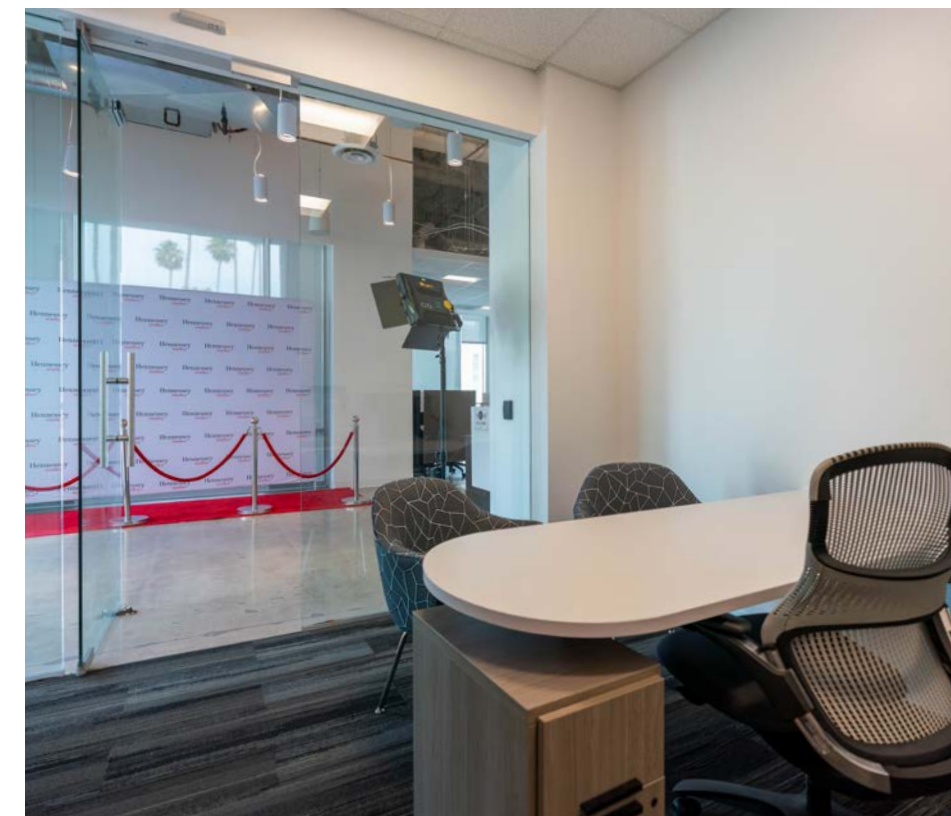


# AMENITIES

## WORKSTATIONS + KITCHEN + PRIVATE OFFICE



Hot-desk edit bays wired to the Facilis network, dual-monitor stations with Adobe Creative Cloud-ready PCs, gigabit Ethernet & enterprise Wi-Fi. Glass-front executive room outfitted with ergonomic desk system, built-in storage credenza, hard-wired gigabit data ports, smart lighting, and acoustic privacy for production meetings, script reviews, or talent prep.









# VIDEO STAGE

STAGE + GREEN SCREEN + LIGHTING GRID + URSA

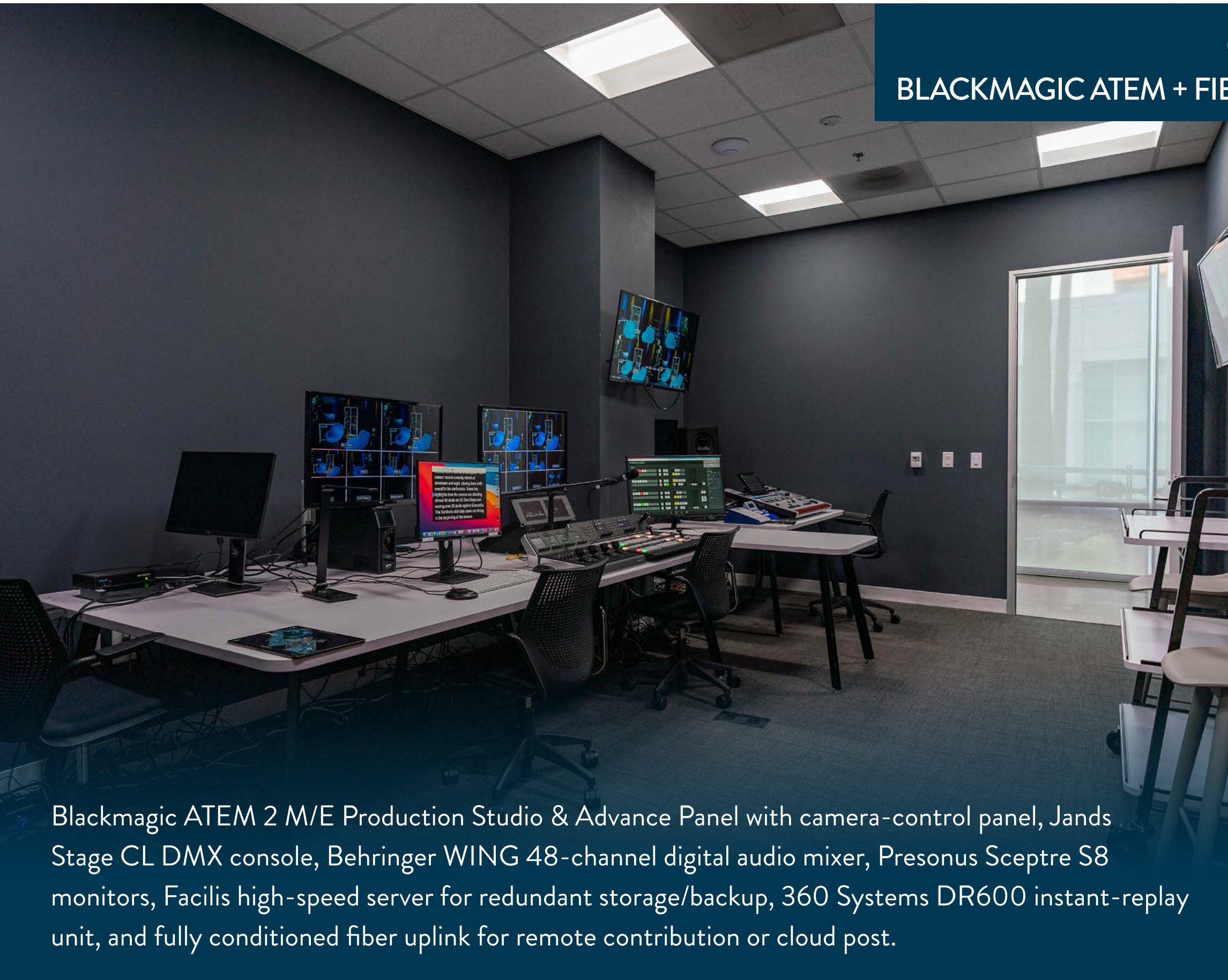


29' × 29' pre-lit stage featuring a 16' × 9' full-size green screen, 3 × Blackmagic URSA Broadcast cameras with FUJINON 4K ENG lenses, Vinten and E-Image pedestals/dolly, DMX-addressable lighting grid (Ikan, Intellytech, Chauvet, ADJ), AutoCue in-glass teleprompter, assorted stands, flags, & apple boxes, polished black floor, Blackmagic Web Presenter on fiber for live streaming, and AJA Ki Pro Ultra 4K recorder.



# CONTROL ROOM

## BLACKMAGIC ATEM + FIBER + FACILIS SERVER STORAGE



Blackmagic ATEM 2 M/E Production Studio & Advance Panel with camera-control panel, Jands Stage CL DMX console, Behringer WING 48-channel digital audio mixer, Presonus Sceptre S8 monitors, Facilis high-speed server for redundant storage/backup, 360 Systems DR600 instant-replay unit, and fully conditioned fiber uplink for remote contribution or cloud post.

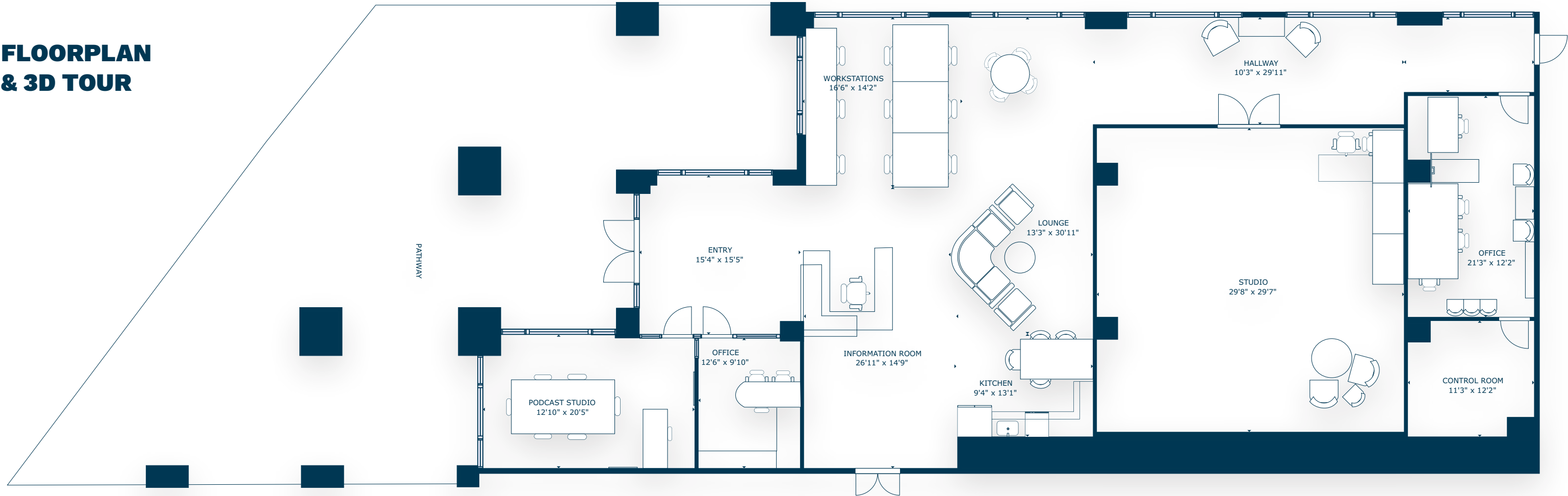




**5200** **SUITE 170**  
**LANKERSHIM BLVD**

NORTH HOLLYWOOD, CA 91601

**FLOORPLAN  
& 3D TOUR**

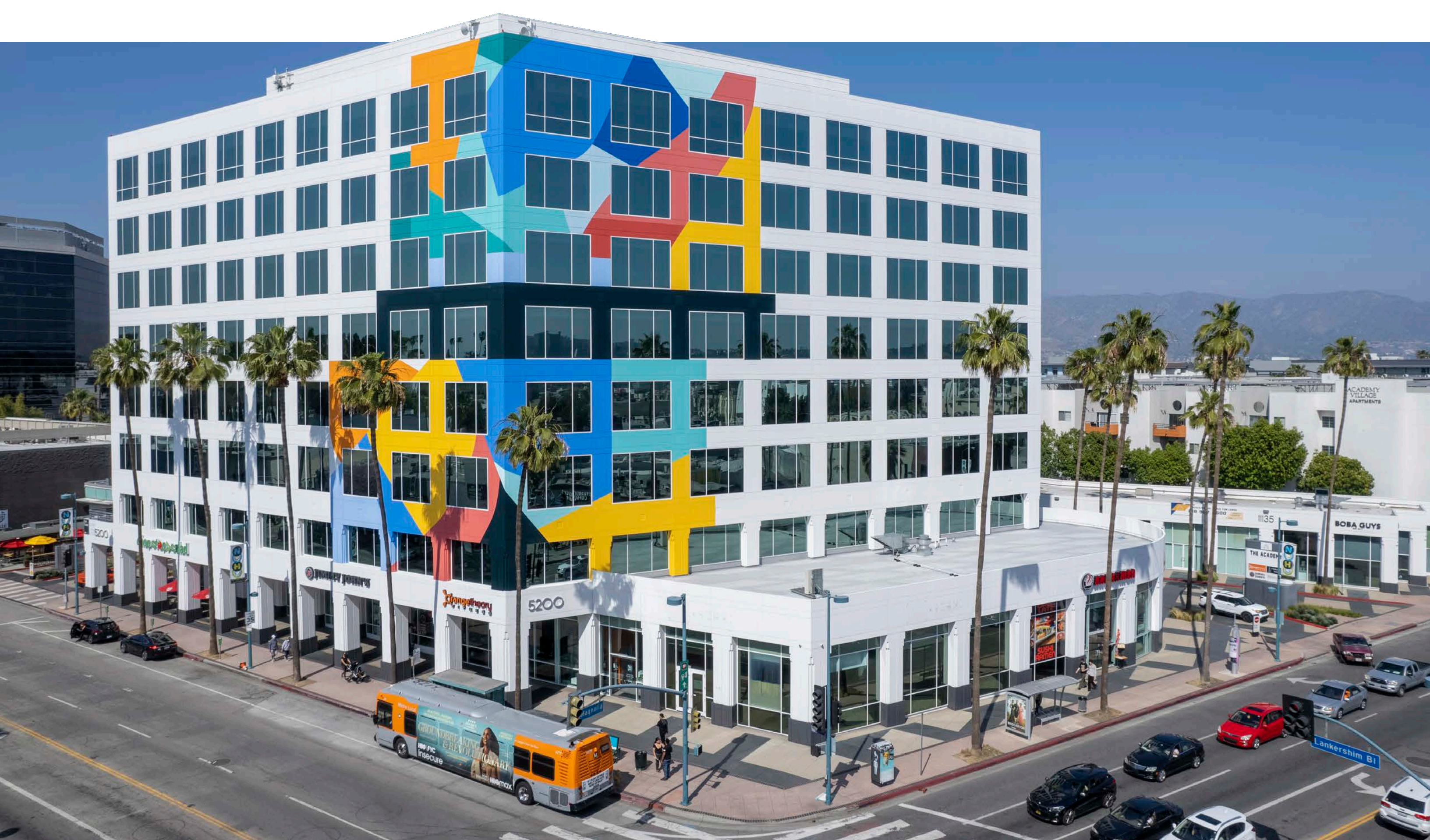


SCAN, TAP or CLICK!

The information in this floor plan has been obtained from sources believed to be reliable. While we do not doubt its accuracy, we have not verified it and make no guarantee, warranty or representation about it. It is your responsibility to independently confirm its accuracy and completeness.









# 5200 LANKERSHIM BLVD

NORTH HOLLYWOOD, CA 91601

**FOR LEASE - SUITE #170**

**FOR MORE INFORMATION:**



**Robert Stratton**

CEO/President - DRE #01182000

**Cell: 661-212-5699**

**Robert@StrattonCRE.com**

The information in this brochure has been obtained from sources believed to be reliable. While we do not doubt its accuracy, we have not verified it and make no guarantee, warranty or representation about it. It is your responsibility to independently confirm its accuracy and completeness.

