



Colliers

Site

10TH AVENUE

10,267 VPD

W. EISENHOWER ROAD

14,448 VPD

For Sale,
Ground Lease,
or Build-to-Suit

1000 Eisenhower Road Leavenworth, Kansas

Property Features

- 191' x 287' outparcel (1.2 acres)
- Walmart-anchored site located in growing Eisenhower corridor
- Additional retailers Maurice's, AT&T, and Dillons grocer nearby
- Hard corner with more than 24,700 vehicles per day
- Graded with utilities to site

Chris Newkirk

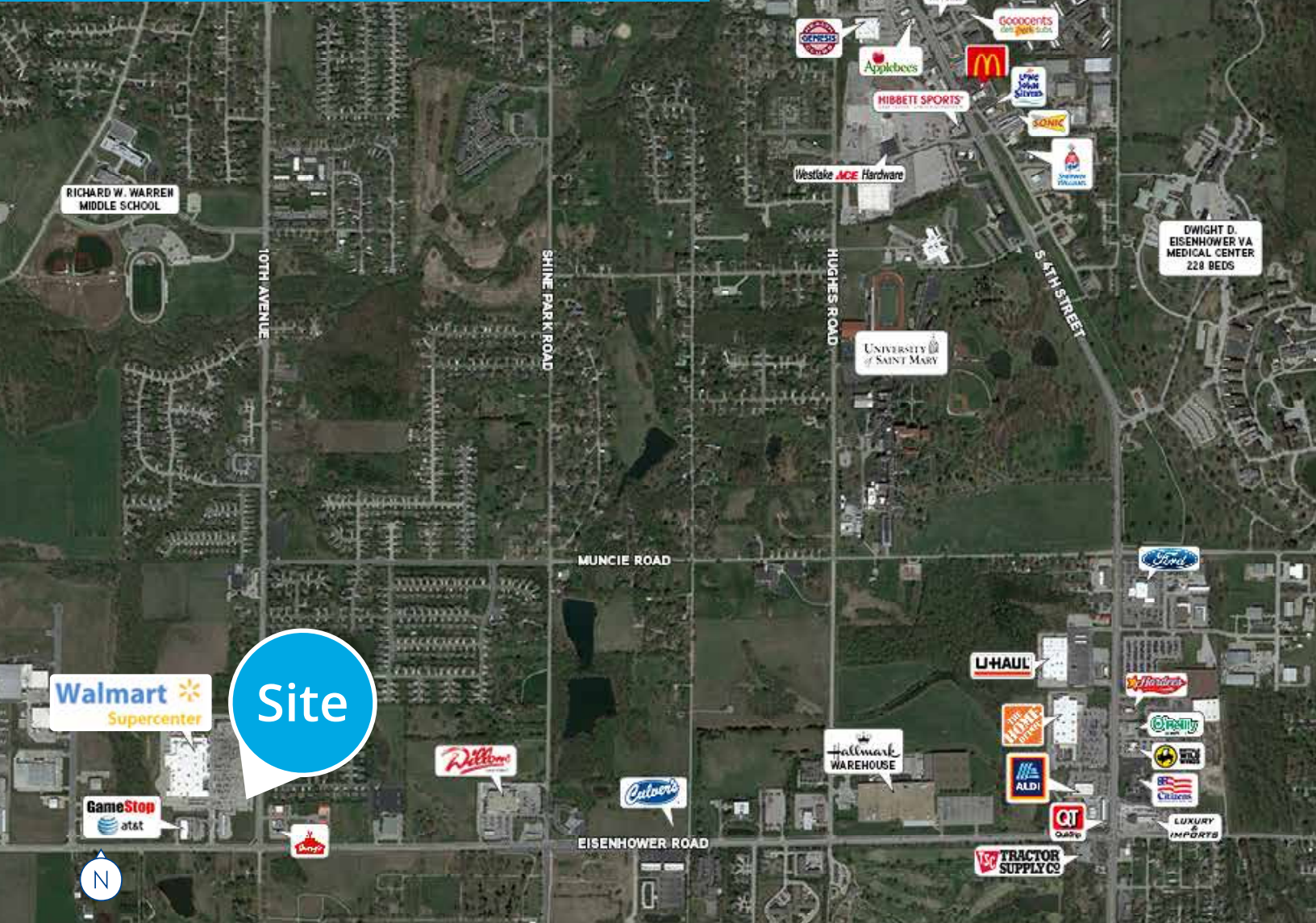
Vice President | Kansas City
+1 816 556 1180
chris.newkirk@colliers.com

Colliers Kansas City
4900 Main Street, Suite 400
Kansas City, MO 64112
colliers.com/kansascity

Accelerating success.

1000 Eisenhower Road

For Sale, Ground Lease, or Build-to-Suit



Demographics



Population

1-mile 2,824
3-mile 29,655
5-mile 45,973



Daytime Population

1-mile 2,944
3-mile 26,613
5-mile 40,245



Household Income

1-mile \$108,245
3-mile \$77,607
5-mile \$72,110

Chris Newkirk

Vice President | Kansas City
+1 816 556 1180
chris.newkirk@colliers.com

Colliers Kansas City
4900 Main Street, Suite 400
Kansas City, MO 64112
colliers.com/kansascity

Colliers

This document has been prepared by Colliers for advertising and general information only. Colliers makes no guarantees, representations or warranties of any kind, expressed or implied, regarding the information including, but not limited to, warranties of content, accuracy and reliability. Any interested party should undertake their own inquiries as to the accuracy of the information. Colliers excludes unequivocally all inferred or implied terms, conditions and warranties arising out of this document and excludes all liability for loss and damages arising there from. This publication is the copyrighted property of Colliers and/or its licensor(s). © 2025. All rights reserved. This communication is not intended to cause or induce breach of an existing listing agreement.