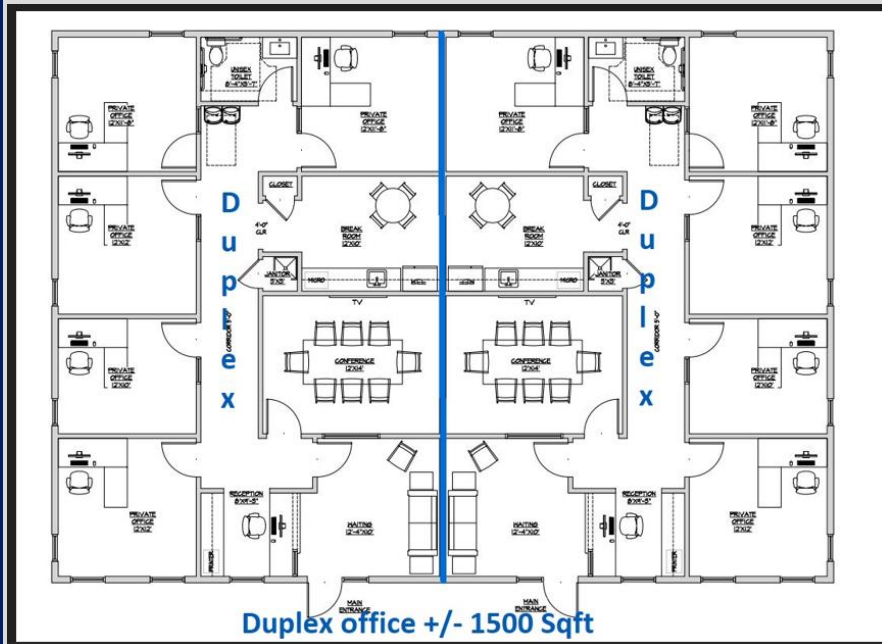
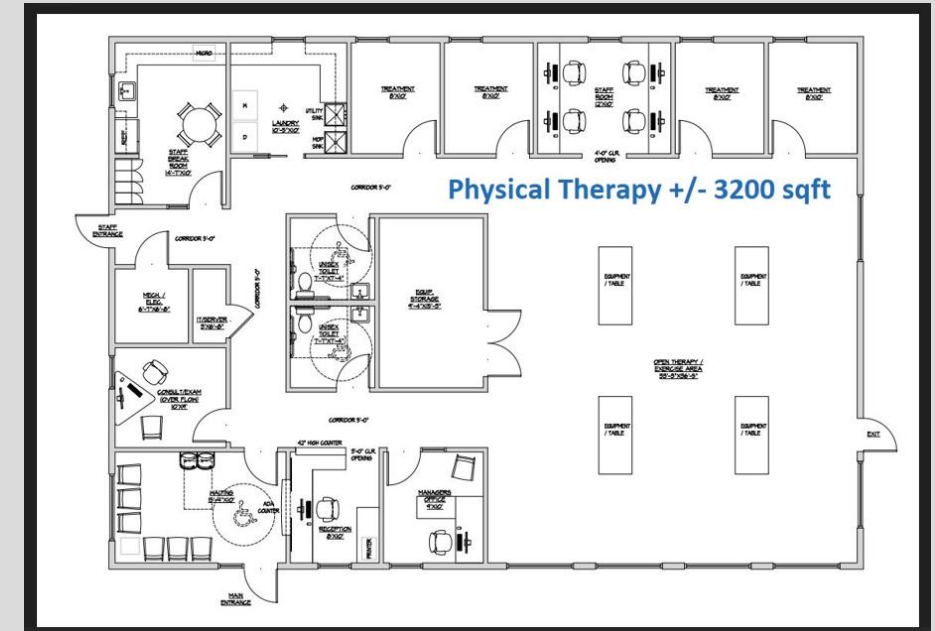


EXCLUSIVE PROPERTY FOR LEASE

634 FAIRVIEW RD, SIMPSONVILLE, SC 29680



*1500 -3260 SF
Office space
(Built to suit)*



Overview

4 Floor plans to choose from; 1500-3260 rentable sqft

Professional office park (customizable build to suit)

Ideal for medical, dental, therapy, law, accounting, insurance, or other professional services

High visibility retail/medical corridor with ample parking

Near well established medical providers

Contact: Chuck Reddy
Cell: 704-678-4084
Call for pricing

634 FAIRVIEW RD, SIMPSONVILLE SC 29680
FAIRVIEW OFFICE PARK

**Renderings are for marketing purposes only and do not constitute final design specifications*

Build-to-Suit Professional Office Space in Premier Location

Located at **634 Fairview Road, Simpsonville, SC**, this brand-new, single-story office building offers a unique **build-to-suit opportunity** within the highly regarded **Fairview Office Park**. Surrounded by established medical and professional practices, the setting is ideal for businesses seeking a modern, customizable space in a tranquil yet accessible location. The property features a **wide, rectangular frontage**, modern exterior architecture, **ample parking** including **handicap access**, and professionally landscaped surroundings. Tenants will enjoy the flexibility to design their ideal interior layout, whether for **medical, dental, wellness, legal, or professional office use**.

Situated near major highways and a variety of retail and service businesses, this location provides both **visibility and convenience** for staff and clients alike.

Lease terms | Triple-net (NNN) | 5-10 years with renewal options

Traffic count (Fairview rd) | 30,000

Avg household income | Zip 29680 \$106,453 | Simpsonville \$101,432



Contact: Chuck Reddy
Cell: 704-678-4084
Call for pricing

634 FAIRVIEW RD, SIMPSONVILLE SC 29680
FAIRVIEW OFFICE PARK



Conveniently positioned adjacent to well established medical practices in the park

Surrounded by retail and service businesses, dining and banking services

Contact: Chuck Reddy
Cell: 704-678-4084
Call for pricing

634 FAIRVIEW RD, SIMPSONVILLE SC 29680
FAIRVIEW OFFICE PARK