

Retail at

130 WILLIAM

AKA 92 Fulton Street



Retail at
130 WILLIAM
AKA 92 Fulton Street

SIZE:

Space A: 4,261 SF Ground Floor
Space B: 9,344 SF Second Floor
+1,642 SF Outdoor Space
Space C: 4,010 SF Lower Level

FRONTAGE: 52'

CEILING HEIGHTS: A: 20' | B: 18' | C: 12.5'

POSSESSION: Immediate

TRANSPORTATION: **2 3 A C F J Z**

HIGHLIGHTS:

- Situated at the base of a brand new 244-unit, Sir David Adjaye designed, luxury condo building
- Ground floor space on Fulton Street can be combined with second floor
- Steps from Fulton Center servicing 28 million annual riders
- Approximately 10 million pedestrians walk by the space annually
- Neighbors include: *Pace University, CVS, The Seaport, Fulton Center, World Trade Center, NY Presbyterian Lower Manhattan, Chipotle*

CONTACT OUR BROKERS FOR MORE INFORMATION:

DAVID GREEN
DGreen@ksrny.com
516.320.0260

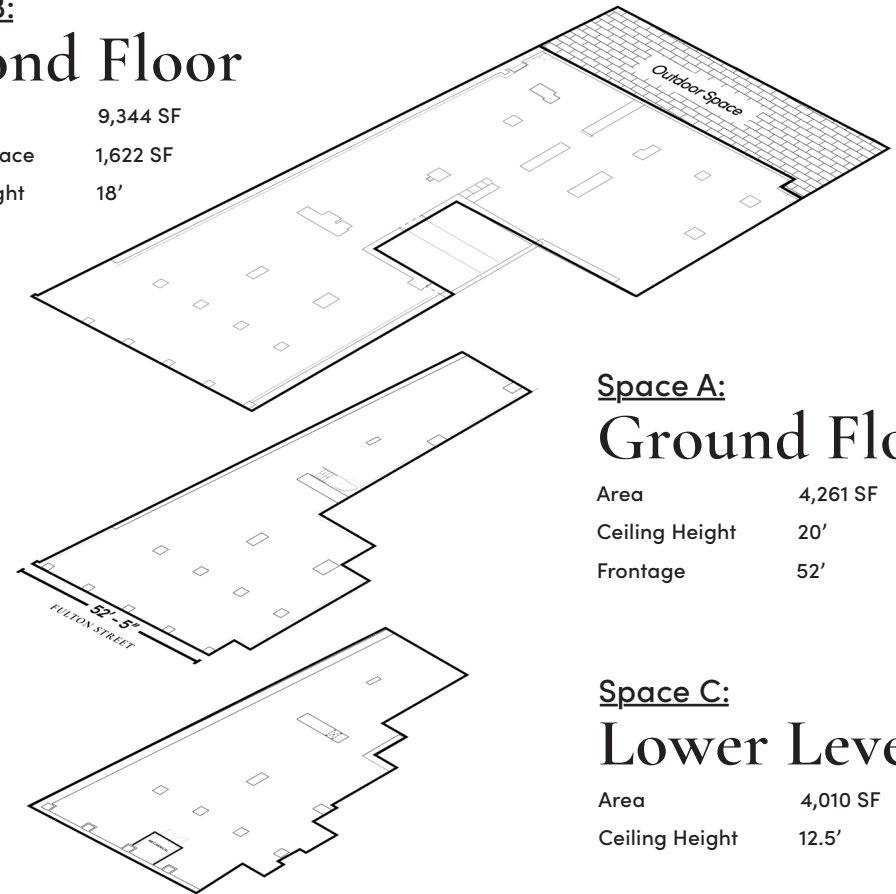
ALBERT SALAMEH
ASalameh@ksrny.com
646.944.0797



Space B:

Second Floor

Area 9,344 SF
Outdoor Space 1,622 SF
Ceiling Height 18'



Space A:

Ground Floor

Area 4,261 SF
Ceiling Height 20'
Frontage 52'

Space C:

Lower Level

Area 4,010 SF
Ceiling Height 12.5'



All information supplied in this marketing presentation and/or flyer is from sources deemed reliable and is furnished subject to errors, omissions, modifications, removal of listings from sale/lease and to any listing condition. Any square footage, dimensions, floor plans and/or technical data set forth are approximations and are subject to further elaboration/confirmation.

Retail at
130 WILLIAM
AKA 92 Fulton Street

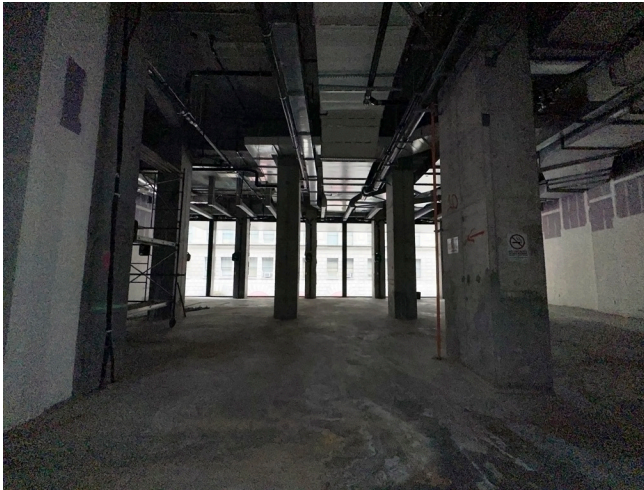
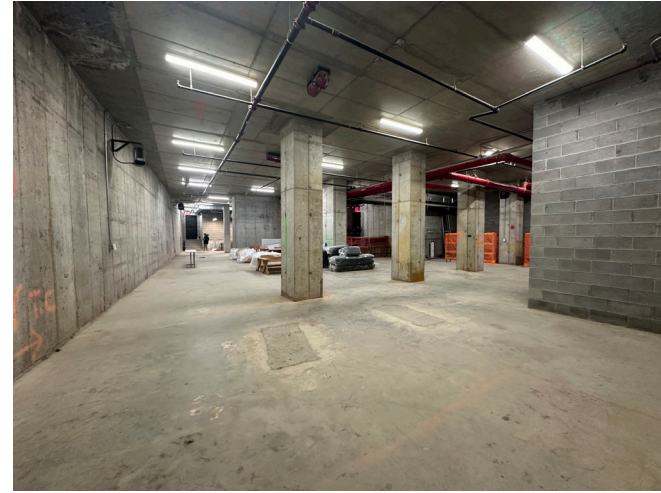
Interiors:
Space A - Ground Floor



Space B - Second Floor



Interiors:
Space C - Lower Level



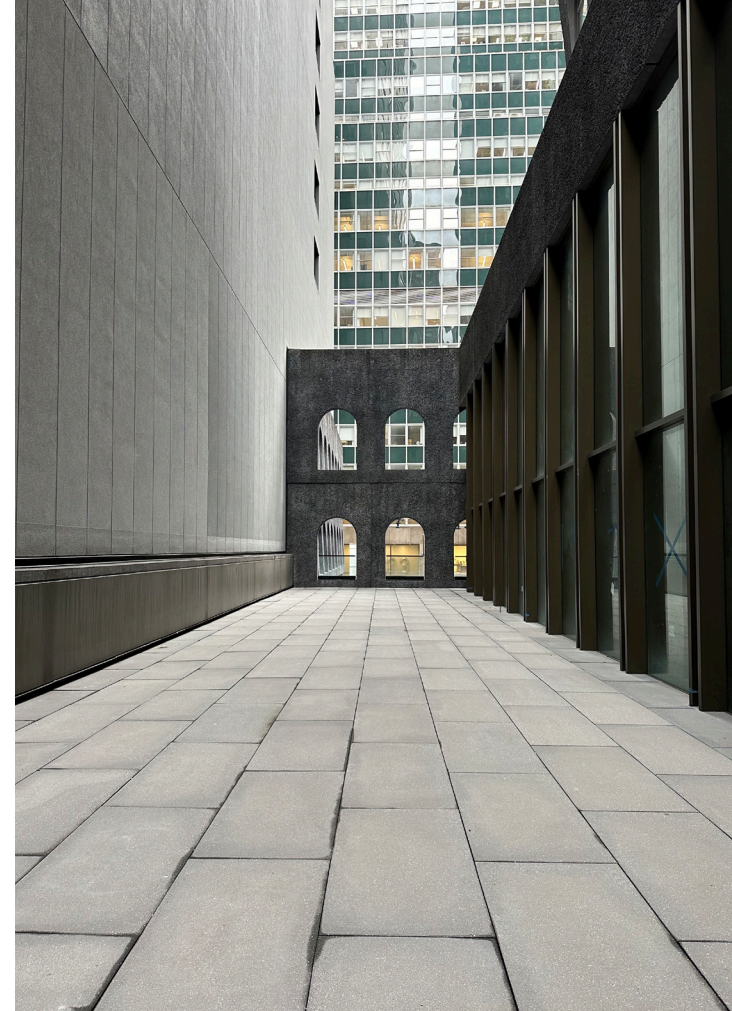
- Over 50' of frontage
- 20' ceiling heights

- 18' ceiling heights
- Tremendous Outdoor space

- 12.5' ceiling heights

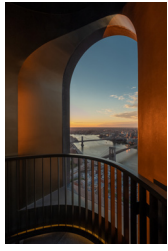
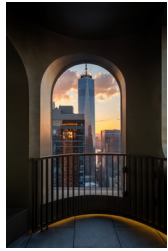
Retail at
130 WILLIAM
AKA 92 Fulton Street

Interiors:
Space B - Outdoor Space



Retail at 130 WILLIAM

AKA 92 Fulton Street



Centrally located in the heart of New York City's Financial District (FiDi), a few blocks north of Wall Street, *130 William* couldn't exist anywhere else. This vibrant neighborhood is grounded by four centuries of history, all imbued with the enduring aspiration of its occupants to seek out something new. Sir David Adjaye uses the neighborhood context as a starting point, pushing against the conventions of tall glass towers with curves and arches inspired by local precedent.

At 66 stories and nearly 800 feet tall, Adjaye's first New York City high-rise tower is an important contribution to the New York City skyline. *130 William's* hand-cast concrete facade creates a striking form against the cityscape of Lower Manhattan. A continuation of a New York narrative that builds on the enduring ambition to explore new ground.

Fulton Street Foot Traffic Concentration

10,672
Typical Day

74,594
Typical Week

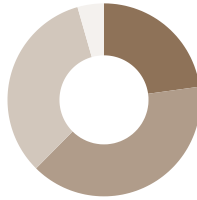
16,276
Friday Average

88,266
Peak Week

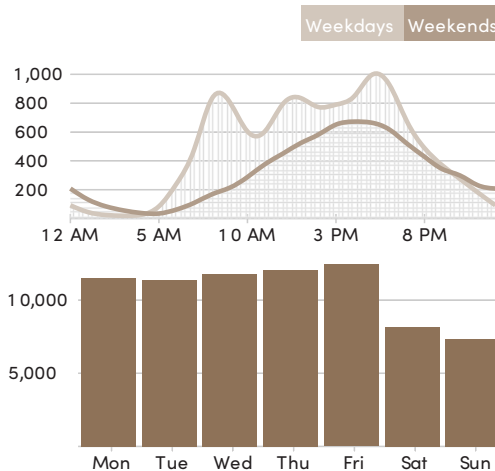
12,428
Thursday Average

1,205,935
Total Visitors

Average Daily Activity



Hours	%	Total
5am - 11am	23%	2,435
11am - 5pm	40%	4,227
5pm - 11pm	33%	3,536
11pm - 5am	4%	473



Retail at

130 WILLIAM

AKA 92 Fulton Street

FOR MORE INFORMATION,
PLEASE CONTACT:

DAVID GREEN

516.320.0260 | DGreen@ksrny.com

ALBERT SALAMEH

646.944.0797 | ASalameh@ksrny.com



All information supplied in this marketing presentation and/or flyer is from sources deemed reliable and is furnished subject to errors, omissions, modifications, removal of listings from sale/lease and to any listing condition. Any square footage, dimensions, floor plans and/or technical data set forth are approximations and are subject to further elaboration/confirmation.