



10963 Hwy 99, Rockvale, Tennessee

PROPERTY HIGHLIGHTS

- ± 2.94 acre parcel
- ± 586 feet of frontage on Hwy 99
- Zoned Commercial - CG
- Excellent area growth lends well to commercial and industrial development
- Located 10 miles from Murfreesboro
- Centrally located near I-840, I-24, and I-65

DEMOGRAPHICS

	3-mile	5-miles	10-miles
Population	1,984	5,993	99,595
Households	717	2,127	36,122
Median HH Income	\$74,175	\$74,376	\$83,346
Median Age	39.4	38.3	35.8



Trey Kirby, CCIM
615 208 8768
tkirby@nainashville.com

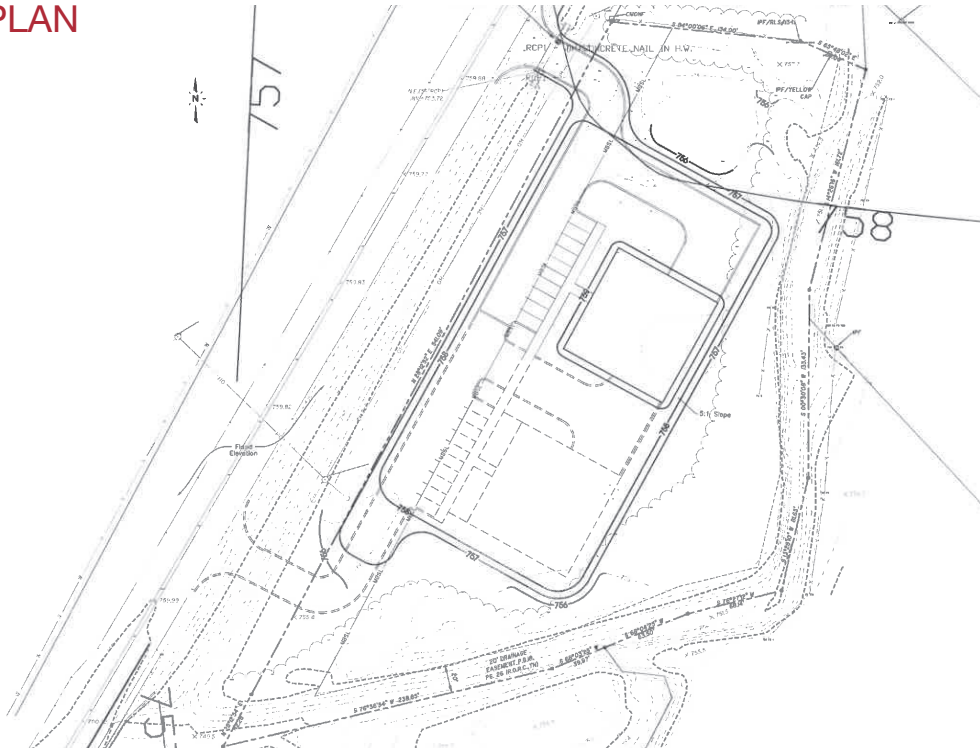
For Sale

± 2.94 acres
Land Parcel

AERIAL



CONCEPT PLAN



NO WARRANTY OR REPRESENTATION, EXPRESS OR IMPLIED, IS MADE AS TO THE ACCURACY OF THE INFORMATION CONTAINED HEREIN, AND THE SAME IS SUBMITTED SUBJECT TO ERRORS, OMISSIONS, CHANGE OF PRICE, RENTAL OR OTHER CONDITIONS, PRIOR SALE, LEASE OR FINANCING, OR WITHDRAWAL WITHOUT NOTICE, AND OF ANY SPECIAL LISTING CONDITIONS IMPOSED BY OUR PRINCIPALS NO WARRANTIES OR REPRESENTATIONS ARE MADE AS TO THE CONDITION OF THE PROPERTY OR ANY HAZARDS CONTAINED THEREIN ARE ANY TO BE IMPLIED.

7105 Town Center Way
3rd Floor
Brentwood, TN 37027
nainashville.com