

# PROPERTY FEATURES



### BUILDING SIZE:

±1,500 sq.ft.

### LOT SIZE

±27,007 sq.ft.  
(±0.62 acres)



### PARCEL

APN: 1192-261-20-0000 &  
1192-261-21-0000



### ZONING

Business Park (BP) per the  
City of Highland, CA

## PROPERTY HIGHLIGHTS

- Three (3) Ground Level Doors
- Partially Improved Lot, Fenced with Utilities on Site (Verify)
- Centrally Located Between I-210, I-215 and I-10 Freeways
- Approximately ±1.5 miles from the 5th St. On/Off Ramp off the I-210 Freeway.



# FOR SALE & LEASE

## 7712 VICTORIA AVE. HIGHLAND, CA

**Rene Ramos, Jr.**  
909.980.6868  
Rene.Ramos@kwcommercial.com  
CalDRE Lic. #01836872

**Jacob B. Bernardy**  
909.935.0935  
Jacob.Bernardy@kwcommercial.com  
CalDRE Lic. #02039512

**Robert D. Bagley III**  
909.935.0938  
Robert.Bagley@kwcommercial.com  
CalDRE Lic. #02131874

**Daniel W. Richards**  
909.243.7747 x 222  
Daniel.Richards@kwcommercial.com  
CalDRE Lic. #00803221



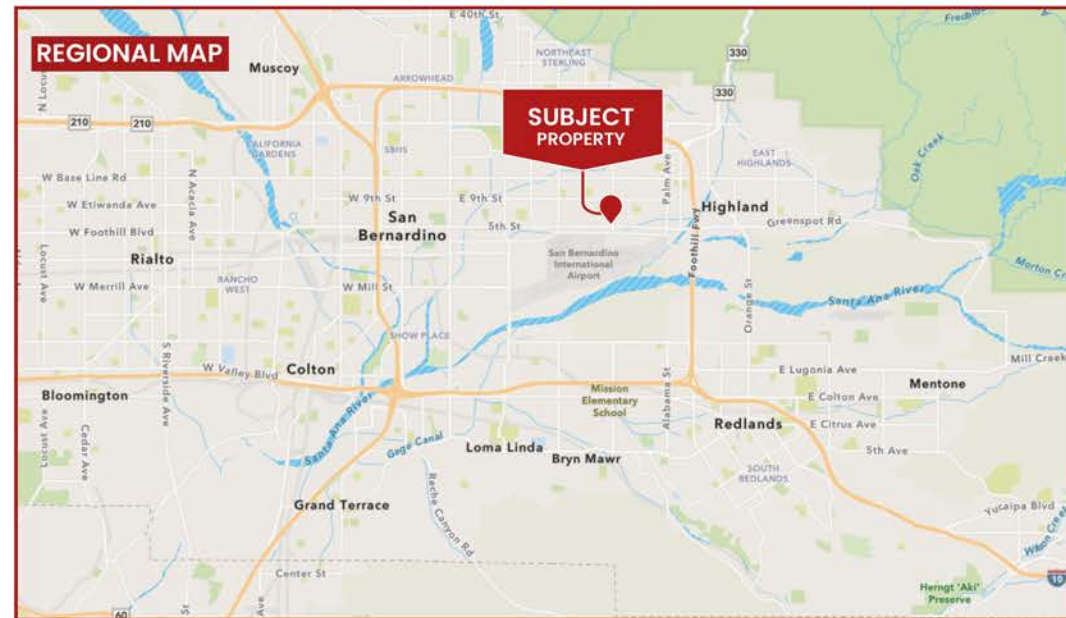
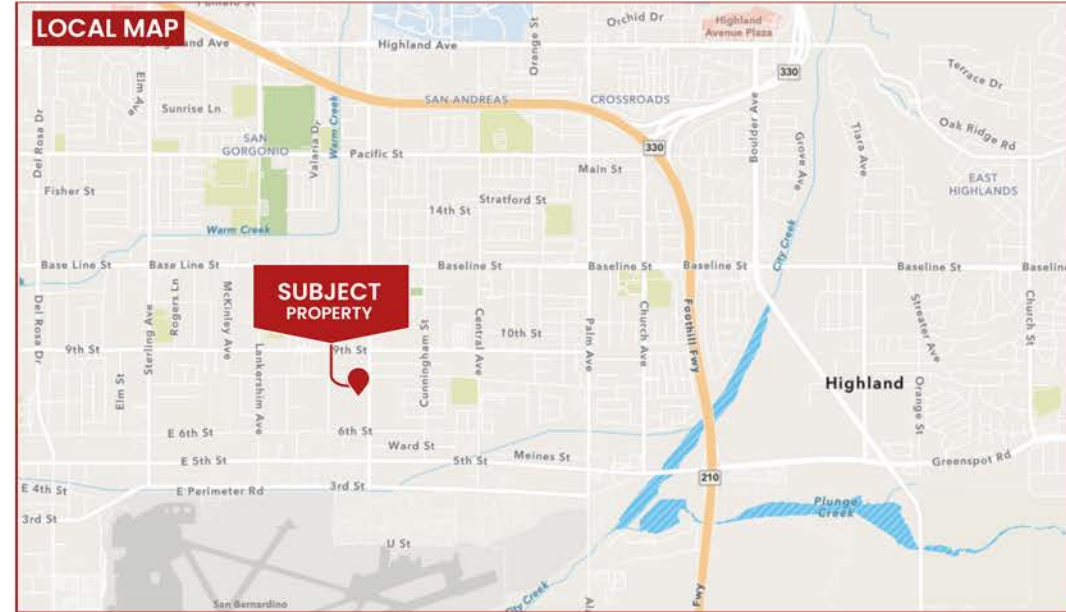
**INLAND  
EMPIRE**

**CAL DRE # 02120868**

KW COMMERCIAL  
3595-1 Inland Empire  
Blvd. Suite 1250  
Ontario, CA 91764  
909.980.6868

WE OBTAINED THE INFORMATION ABOVE FROM SOURCES WE BELIEVE TO BE RELIABLE. HOWEVER, WE HAVE NOT VERIFIED ITS ACCURACY AND MAKE NO GUARANTEE, WARRANTY, OR REPRESENTATION ABOUT IT. IT IS SUBMITTED SUBJECT TO THE POSSIBILITY OF ERRORS, OMISSIONS, CHANGE OF PRICE, RENTAL OR OTHER CONDITIONS, PRIOR SALE, LEASE OR FINANCING, OR WITHDRAWAL WITHOUT NOTICE. WE INCLUDE PROJECTIONS, OPINIONS, ASSUMPTIONS OR ESTIMATES FOR EXAMPLE ONLY, AND THEY MAY NOT REPRESENT CURRENT OR FUTURE PERFORMANCE OF THE PROPERTY. YOU AND YOUR TAX AND LEGAL ADVISORS SHOULD CONDUCT YOUR OWN INVESTIGATION OF THE PROPERTY AND TRANSACTION.





Rene Ramos, Jr.  
909.980.6868  
Rene.Ramos@kwcommercial.com  
CalDRE Lic. #01836872

Jacob B. Bernardy  
909.935.0935  
Jacob.Bernardy@kwcommercial.com  
CalDRE Lic. #02039512

Robert D. Bagley III  
909.935.0938  
Robert.Bagley@kwcommercial.com  
CalDRE Lic. #02131874

Daniel W. Richards  
909.243.7747 x 222  
Daniel.Richards@kwcommercial.com  
CalDRE Lic. #00803221



**CAL DRE # 02120868**





Cypress St.

Victoria Ave.

Rene Ramos, Jr.  
909.980.6868  
Rene.Ramos@kwcommercial.com  
CalDRE Lic. #01836872

Jacob B. Bernardy  
909.935.0935  
Jacob.Bernardy@kwcommercial.com  
CalDRE Lic. #02039512

Robert D. Bagley III  
909.935.0938  
Robert.Bagley@kwcommercial.com  
CalDRE Lic. #02131874

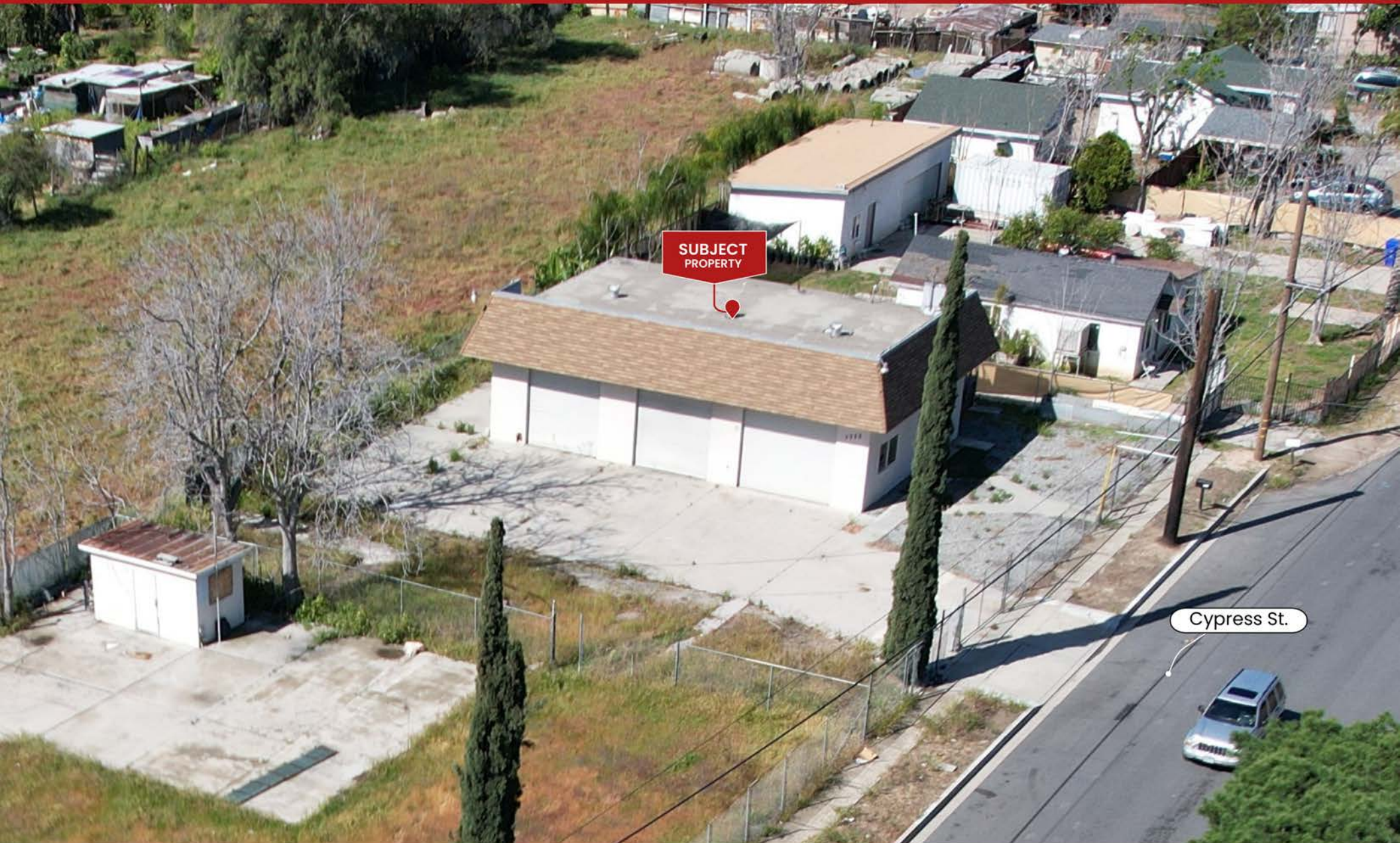
Daniel W. Richards  
909.243.7747 x 222  
Daniel.Richards@kwcommercial.com  
CalDRE Lic. #00803221



INLAND  
EMPIRE

CAL DRE # 02120868





Rene Ramos, Jr.  
909.980.6868  
Rene.Ramos@kwcommercial.com  
CalDRE Lic. #01836872

Jacob B. Bernardy  
909.935.0935  
Jacob.Bernardy@kwcommercial.com  
CalDRE Lic. #02039512

Robert D. Bagley III  
909.935.0938  
Robert.Bagley@kwcommercial.com  
CalDRE Lic. #02131874

Daniel W. Richards  
909.243.7747 x 222  
Daniel.Richards@kwcommercial.com  
CalDRE Lic. #00803221



INLAND  
EMPIRE

CAL DRE # 02120868