

FOR LEASE

Freestanding Building in Over the Rhine



1415 Walnut Street, Cincinnati, OH 45202

DEMOGRAPHICS

PROPERTY HIGHLIGHTS

- Freestanding Building Surrounded by Parking
- Unique Opportunity in the Heart of OTR
- Catty Corner to \$33M+ Redevelopment
- Rooftop Possible with Views of Vine St
- Within 0.5 Miles to \$250M TQL Stadium
- Close Proximity to OTR's Best Known Chef Driven Concepts

Year 2025	One Mile	Three Mile	Five Mile
Estimated Population	31,877	156,574	335,132
Median Income	\$68,229	\$59,536	\$66,837
Average HH Income	\$104,264	\$87,798	\$95,761
Daytime Population	59,157	129,715	192,060



Haleigh Jones

haleigh@onsiteretailgroup.com
513.924.5266

Joshua M. Rothstein

josh@onsiteretailgroup.com
513.268.4453

[CLICK HERE](#) TO VIEW OUR OTHER LISTINGS!



Haleigh Jones
haleigh@onsiteretailgroup.com
513.924.5266

Joshua M. Rothstein
josh@onsiteretailgroup.com
513.268.4453

1415 WALNUT STREET
Cincinnati, OH 45202

OnSite
Retail Group
E 9th St



Haleigh Jones
haleigh@onsiteretailgroup.com
513.924.5266

Joshua M. Rothstein
josh@onsiteretailgroup.com
513.268.4453

1415 WALNUT STREET
Cincinnati, OH 45202

OnSite
Retail Group

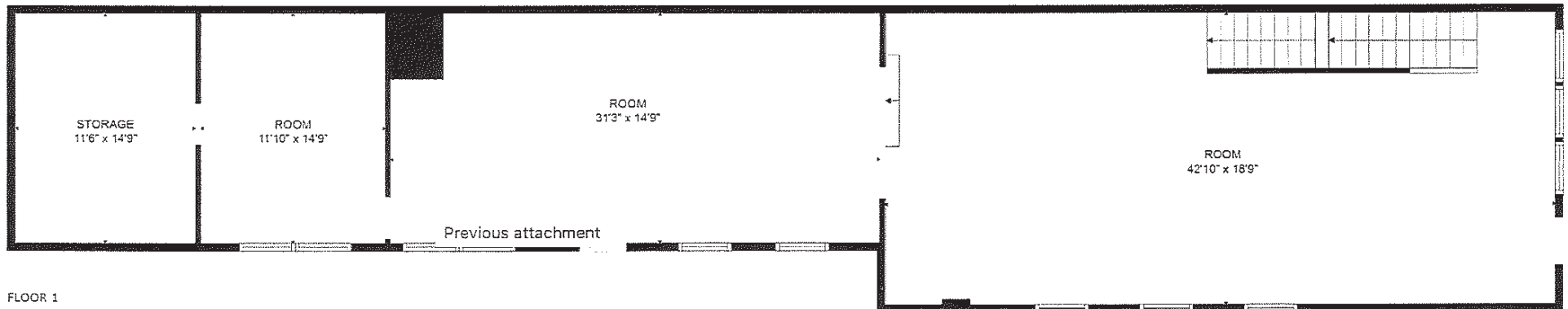
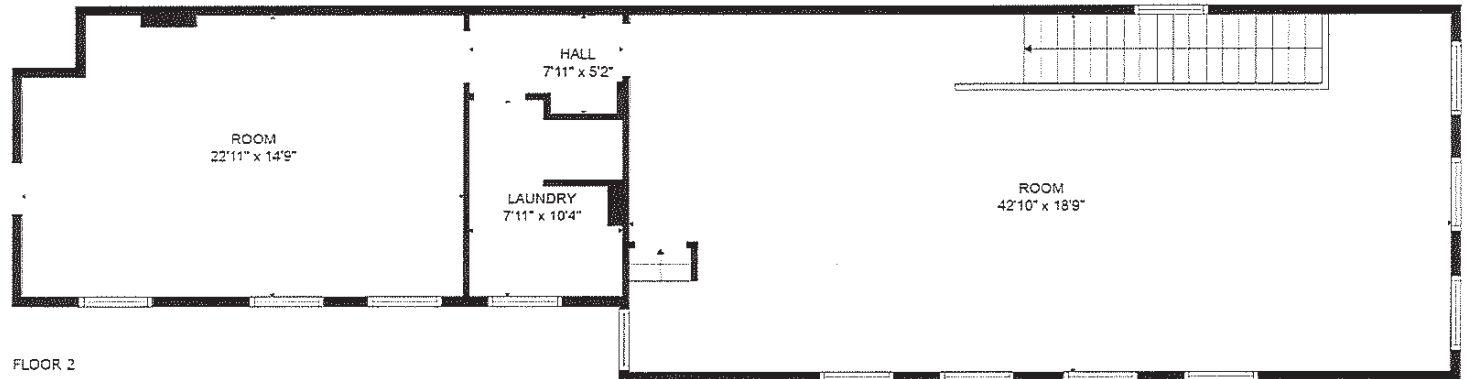


Haleigh Jones
haleigh@onsiteretailgroup.com
513.924.5266

Joshua M. Rothstein
josh@onsiteretailgroup.com
513.268.4453

1415 WALNUT STREET
Cincinnati, OH 45202

OnSite
Retail Group



Haleigh Jones
haleigh@onsiteretailgroup.com
 513.924.5266

Joshua M. Rothstein
josh@onsiteretailgroup.com
 513.268.4453

1415 WALNUT STREET
Cincinnati, OH 45202



Summary Profile

2010-2020 Census, 2025 Estimates with 2030 Projections
Calculated using Weighted Block Centroid from Block Groups



Lat/Lon: 39.1117/-84.5142

1415 Walnut St Cincinnati, OH 45202	1 mi radius	3 mi radius	5 mi radius
Population			
2025 Estimated Population	31,877	156,574	335,132
2030 Projected Population	34,777	162,689	339,684
2020 Census Population	25,359	139,155	312,072
2010 Census Population	24,937	138,494	307,780
Projected Annual Growth 2025 to 2030	1.8%	0.8%	0.3%
Historical Annual Growth 2010 to 2025	1.9%	0.9%	0.6%
2025 Median Age	31.5	32.4	33.8
Households			
2025 Estimated Households	16,717	72,549	150,155
2030 Projected Households	18,610	76,848	154,335
2020 Census Households	13,038	62,939	137,970
2010 Census Households	11,723	60,313	132,987
Projected Annual Growth 2025 to 2030	2.3%	1.2%	0.6%
Historical Annual Growth 2010 to 2025	2.8%	1.4%	0.9%
Race and Ethnicity			
2025 Estimated White	51.6%	62.5%	63.4%
2025 Estimated Black or African American	40.8%	28.3%	27.9%
2025 Estimated Asian or Pacific Islander	2.7%	3.0%	2.2%
2025 Estimated American Indian or Native Alaskan	-	0.2%	0.2%
2025 Estimated Other Races	4.8%	5.9%	6.2%
2025 Estimated Hispanic	3.6%	4.7%	5.0%
Income			
2025 Estimated Average Household Income	\$104,264	\$87,798	\$95,761
2025 Estimated Median Household Income	\$68,229	\$59,536	\$66,837
2025 Estimated Per Capita Income	\$55,100	\$41,234	\$43,264
Education (Age 25+)			
2025 Estimated Elementary (Grade Level 0 to 8)	2.1%	3.3%	3.1%
2025 Estimated Some High School (Grade Level 9 to 11)	6.4%	6.8%	6.3%
2025 Estimated High School Graduate	17.1%	23.7%	24.6%
2025 Estimated Some College	15.1%	15.7%	16.1%
2025 Estimated Associates Degree Only	4.8%	6.7%	7.5%
2025 Estimated Bachelors Degree Only	32.3%	24.9%	23.7%
2025 Estimated Graduate Degree	22.2%	18.9%	18.8%
Business			
2025 Estimated Total Businesses	3,741	9,000	14,795
2025 Estimated Total Employees	59,157	129,715	192,060
2025 Estimated Employee Population per Business	15.8	14.4	13.0
2025 Estimated Residential Population per Business	8.5	17.4	22.7

©2025, Sites USA, Chandler, Arizona, 480-491-1112 Demographic Source: Applied Geographic Solutions 5/2025, TIGER Geography - RS1

This report was produced using data from private and government sources deemed to be reliable. The information herein is provided without representation or warranty.