

FOR SALE

± 5,455 SF



CUSHMAN &
WAKEFIELD

COMMERCIAL
OKLAHOMA



Midtown Office Building NOW AVAILABLE

1138 N ROBINSON AVE
OKLAHOMA CITY, OK 73103



Midtown Office Building FOR SALE

1138 N ROBINSON AVE
OKLAHOMA CITY, OK 73103

PROPERTY INFORMATION

**BUILDING
SIZE** ± 5,455 SF

**SPACE
AVAILABLE** ± 3,659 SF

STORIES 2

YEAR BUILT 1930 | 2018

**PROPERTY
TYPE** Multi-Tenant

PARKING Free Surface Available

**PARKING
RATIO** 5.02 / 1,000

SALES PRICE \$1,636,500



CONTACT US

MICAH SHERMAN, CCIM
+1 405 488 5548
msherman@commercialoklahoma.com

TRAVIS C MASON
+1 405 297 9924
tmason@commercialoklahoma.com

VIVIENNE VOGLER
+1 405 570 8595
vvogler@commercialoklahoma.com



204 N Robinson Ave, Suite 2000, Oklahoma City, OK 73102
+1 405 563 5000
commercialoklahoma.com

©2026 Cushman & Wakefield | Commercial Oklahoma. Independently Owned and Operated / A Member of the Cushman & Wakefield Alliance
All rights reserved. The information contained in this communication is strictly confidential. This information has been obtained from sources believed to be reliable but has not been verified. No warranty or representation, express or implied, is made as to the condition of the property (or properties) referenced herein or as to the accuracy or completeness of the information contained herein, and same is submitted subject to errors, omissions, change of price, rental or other conditions, withdrawal without notice, and to any special listing conditions imposed by the property owner(s). Any projections, opinions or estimates are subject to uncertainty and do not signify current or future property performance.

Midtown Office Building FOR SALE

1138 N ROBINSON AVE
OKLAHOMA CITY, OK 73103

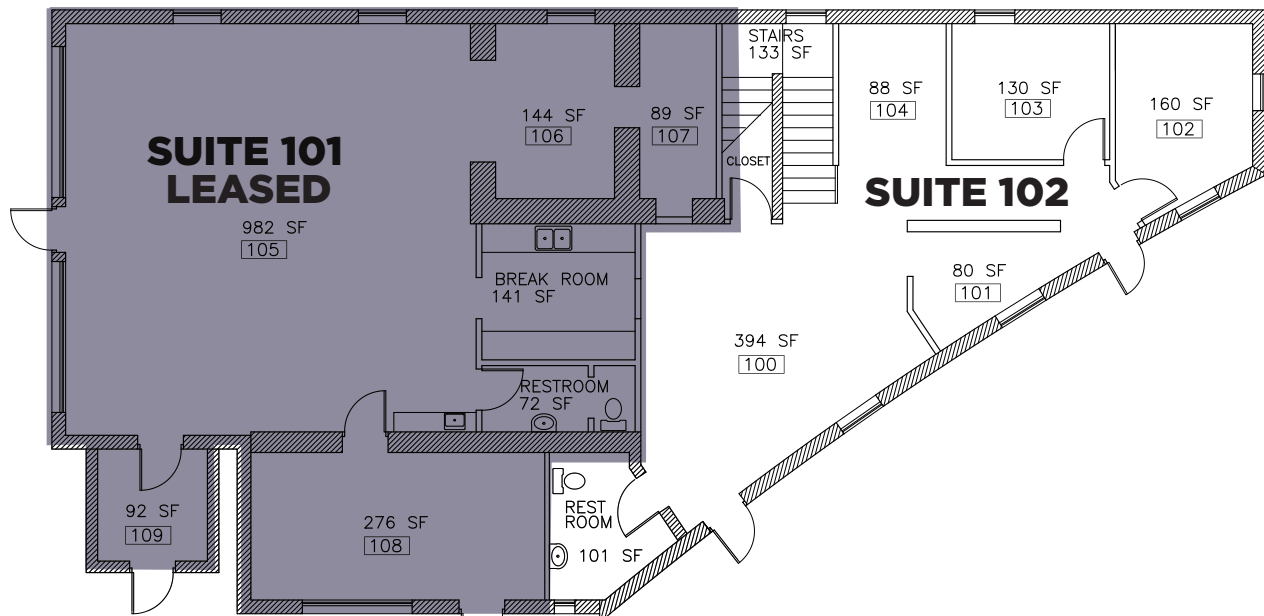


MICAH SHERMAN, CCIM
+1 405 488 5548
msherman@commercialoklahoma.com

TRAVIS C MASON
+1 405 297 9924
tmason@commercialoklahoma.com

VIVIENNE VOGLER
+1 405 570 8595
vvogler@commercialoklahoma.com

1st Floor | Suite 102 - 1,200 SF Available



2nd Floor | Suite 201 - 2,459 SF Available

