

FOR SALE

2,896 SF BLDG
.32 AC

A BEAUTIFUL, COMFORTABLE VERY NW DENTAL OFFICE

1,873 Sf Main Floor / 1,023 SF Finished Lower



\$650,000

1415 Grand Blvd | Vancouver, WA 98661

- 2,973 SF on .32 AC - Total 2 Lots .17 & .15
- Zoned NC- Neighborhood Commercial (Local Services)
- Access- Grand or McLoughlin Blvd
- 16 Paved Parking Spaces, Including ADA Space
- Monument Sign
- Additional \$100k for All Equipment (Except Computers)

>>> www.SheaCRE.com

Kelly Shea

COMMERCIAL - INDUSTRIAL

(360) 921-3710 CELL

KELLY@SHEACRE.COM

Marci Caputo

COMMERCIAL - RESIDENTIAL

(360) 901-5597 CELL

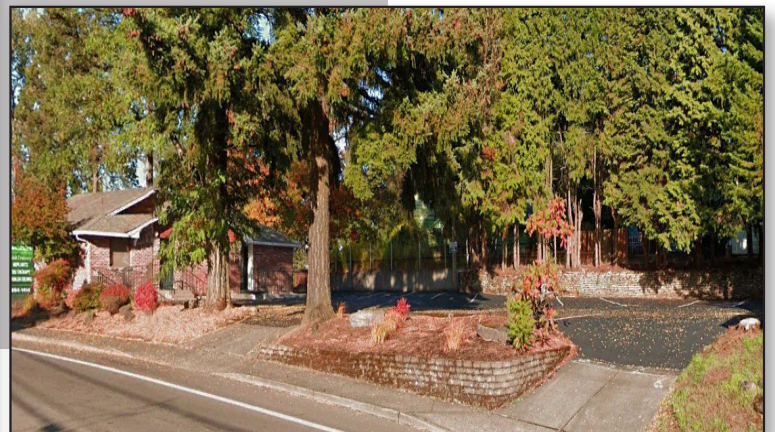
MARCI@SHEACRE.COM



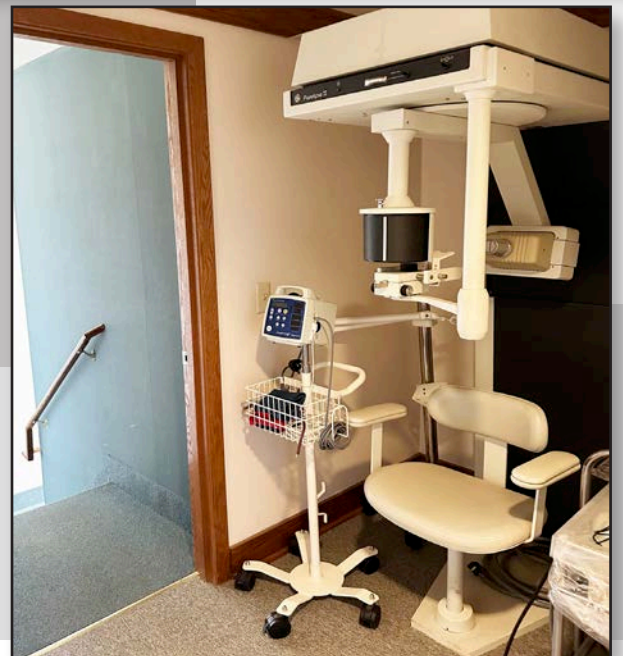
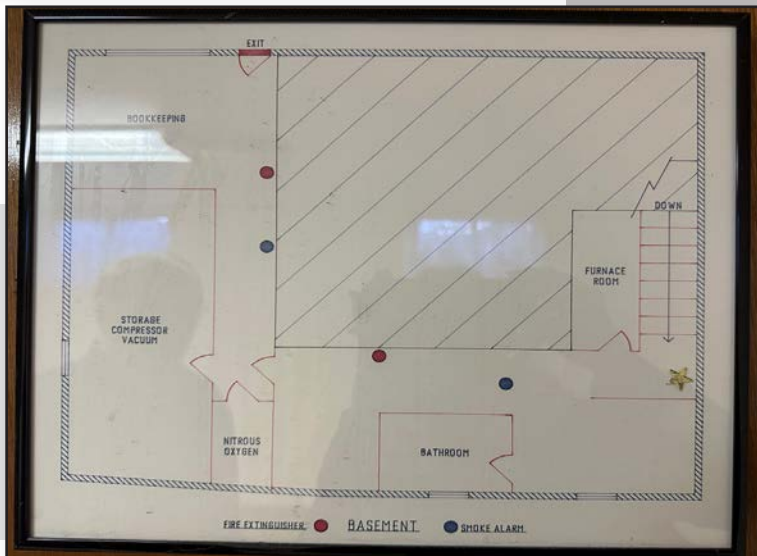
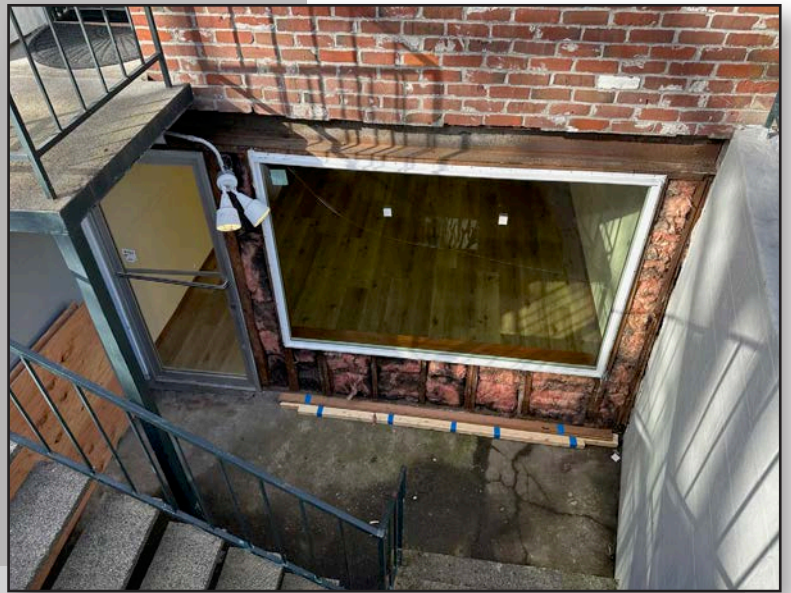
**MAJ COMMERCIAL
REAL ESTATE**

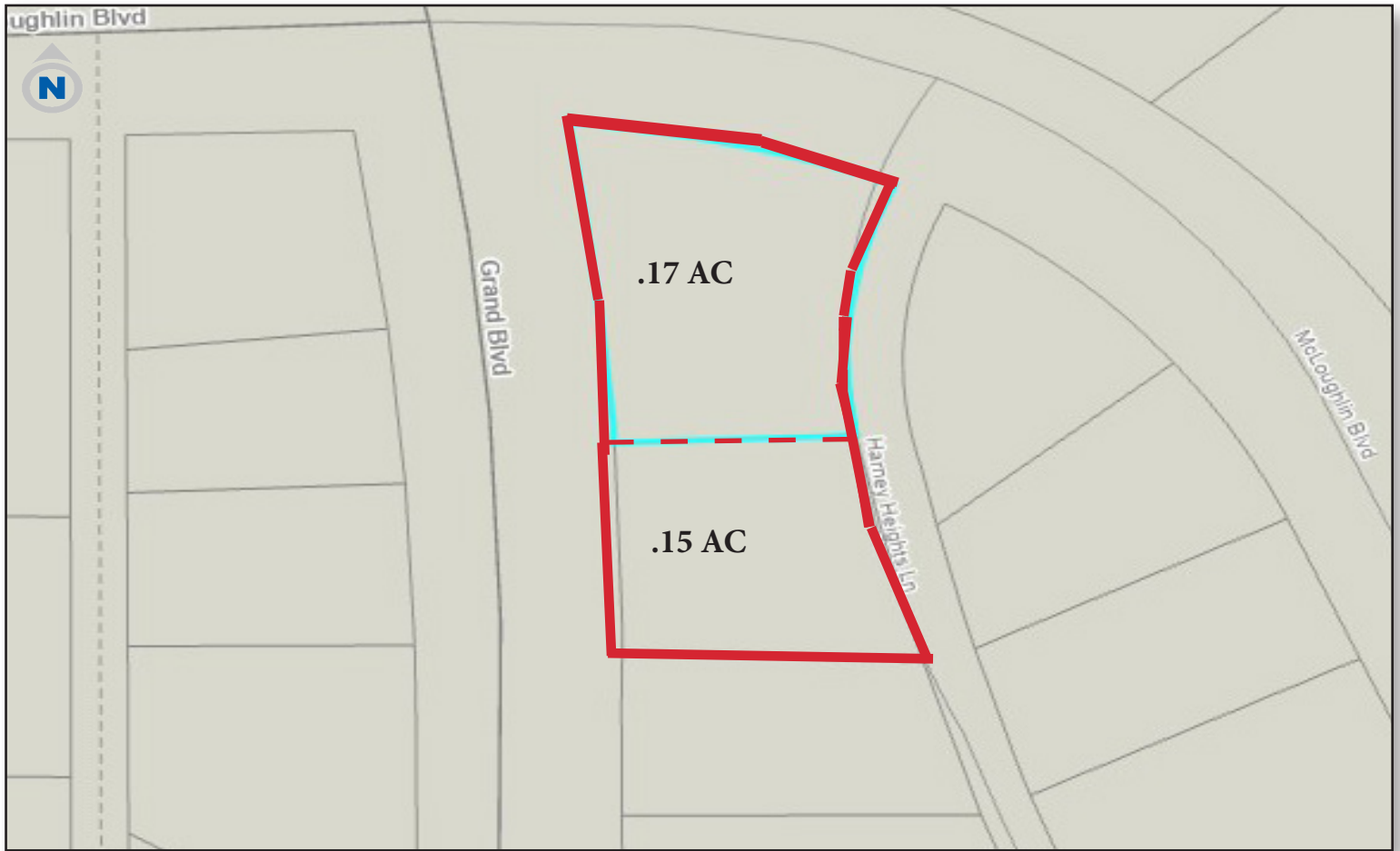
300 W 15th St. Ste 201 Vancouver, WA 98660

Grand Blvd Dental Office









- **Beautiful, Hardwood Floors, Pendleton Seats in Waiting Rm**
- **Located on the Corner of Grand & McLoughlin Blvd**
- **On .32 AC with On-Site Parking**
- **Close to Clark Community College**
- **Zoned CN - (Neighborhood Commercial)**
- **Access - on Grand or McLoughlin**
- **16 Paved Parking, Including ADA Spaces**
- **6 Operatory Rooms, Dental & Hygenist**
- **Reception, Waiting Room, 4 Rest Rooms**
- **Completely Remodeled Office on Lower Level**
- **Oxygen, Nitrous and Furnace on Lower Level**

VANCOUVER LOCATION

