

PRODUCTION AND CATERING KITCHENS IN NE PORTLAND

Haleakala Building 2816 NE Halsey Street, Portland OR 97232

FOR LEASE



Located in the NE Broadway/Irvington Neighborhood, Haleakala Building features two fully equipped production kitchens with additional space for prep or office work. A covered loading and parking area on the side of the building make managing distribution a breeze and an additional bonus of a backyard with raised beds suit a culinary business with farm to table in mind. Being situated ½ mile from the Banfield Expressway, only a few blocks from the Grand Park Village Project, and next door to Fred Meyer, your business will enjoy easy access to customers, preferred vendors, and distributors. There are 6 major grocery stores within a mile!

Tricia Anderson

tricia@northrimpdx.com | [503.525.1927](tel:503.525.1927)



northrimpdx.com

819 SE Morrison Street, Ste 110, Portland OR 97214 | [503.525.1925](tel:503.525.1925)

Matthew Schweitzer | matt@northrimpdx.com | [503.381.3134](tel:503.381.3134)

FOR LEASE

PRODUCTION AND CATERING KITCHENS IN NE PORTLAND

Haleakala Building 2816 NE Halsey Street, Portland OR 97232

Bike Score



"Biker's Paradise"

Walk Score



"Walker's Paradise"

Transit Score



"Good Transit"

Property Details

- Two equipped production kitchens with prep areas
- Storage area
- Private ADA restrooms
- Covered loading / parking area
- Second floor apartment
- 5,100 Sq Ft fenced backyard with raised beds
- Wi-Fi and 24/7 alarm system
- High speed fiber internet

Easy Site Access

- Located in Irvington/Broadway
- Blocks from NE Broadway and 33rd
- 1/2 Mile from I-84 on-ramp
- 3 Blocks from Grant Park Village Project
- 8 Minutes from downtown PDX
- 5 Minutes from Lloyd Center
- 3 Miles from SE Powell Blvd
- 8 Minutes from Hwy 205

Nearby Distribution Outlets

New Seasons	3 blocks
Fred Meyer	Next door
Safeway	0.8 miles
Trader Joe's	0.8 miles
Whole Foods	0.8 miles

Virtual Tour
Similar Kitchen



Virtual Tour

tinyurl.com/MontBlanc104



REPRESENTATIVE KITCHEN

Tricia Anderson

tricia@northrimpdx.com | [503.525.1927](tel:503.525.1927)



northrimpdx.com

819 SE Morrison Street, Ste 110, Portland OR 97214 | [503.525.1925](tel:503.525.1925)

Matthew Schweitzer | matt@northrimpdx.com | [503.381.3134](tel:503.381.3134)



PRODUCTION AND CATERING KITCHENS IN NE PORTLAND

Haleakala Building 2816 NE Halsey Street, Portland OR 97232

FOR LEASE

Tricia Anderson
tricia@northrimpx.com | [503.525.1927](tel:503.525.1927)



northrimpx.com

819 SE Morrison Street, Ste 110, Portland OR 97214 | [503.525.1925](tel:503.525.1925)

Matthew Schweitzer | matt@northrimpx.com | [503.381.3134](tel:503.381.3134)

Standard Kitchen Features*

- 8' x 6' Walk-in cooler
- 8-Foot canopy hood
- Convection oven
- 4-Burner range with full size oven
- Deep fryer
- Low-temp, upright dishwasher, and clean and dirty dish table
- 2-Compartment sink with drainboard and clean and dirty dish table
- 1-Compartment sink with drainboard
- (2) 15" Wall-mount hand sinks

OUTFITTER BY:

**PITMAN
RESTAURANT
EQUIPMENT**

**Kitchen equipment is subject to change;
photos are for illustrative purposes only*



SAMPLE KITCHEN

PRODUCTION AND CATERING KITCHENS IN NE PORTLAND

Haleakala Building 2816 NE Halsey Street, Portland OR 97232

FOR LEASE

Tricia Anderson
tricia@northrimpx.com | [503.525.1927](tel:503.525.1927)

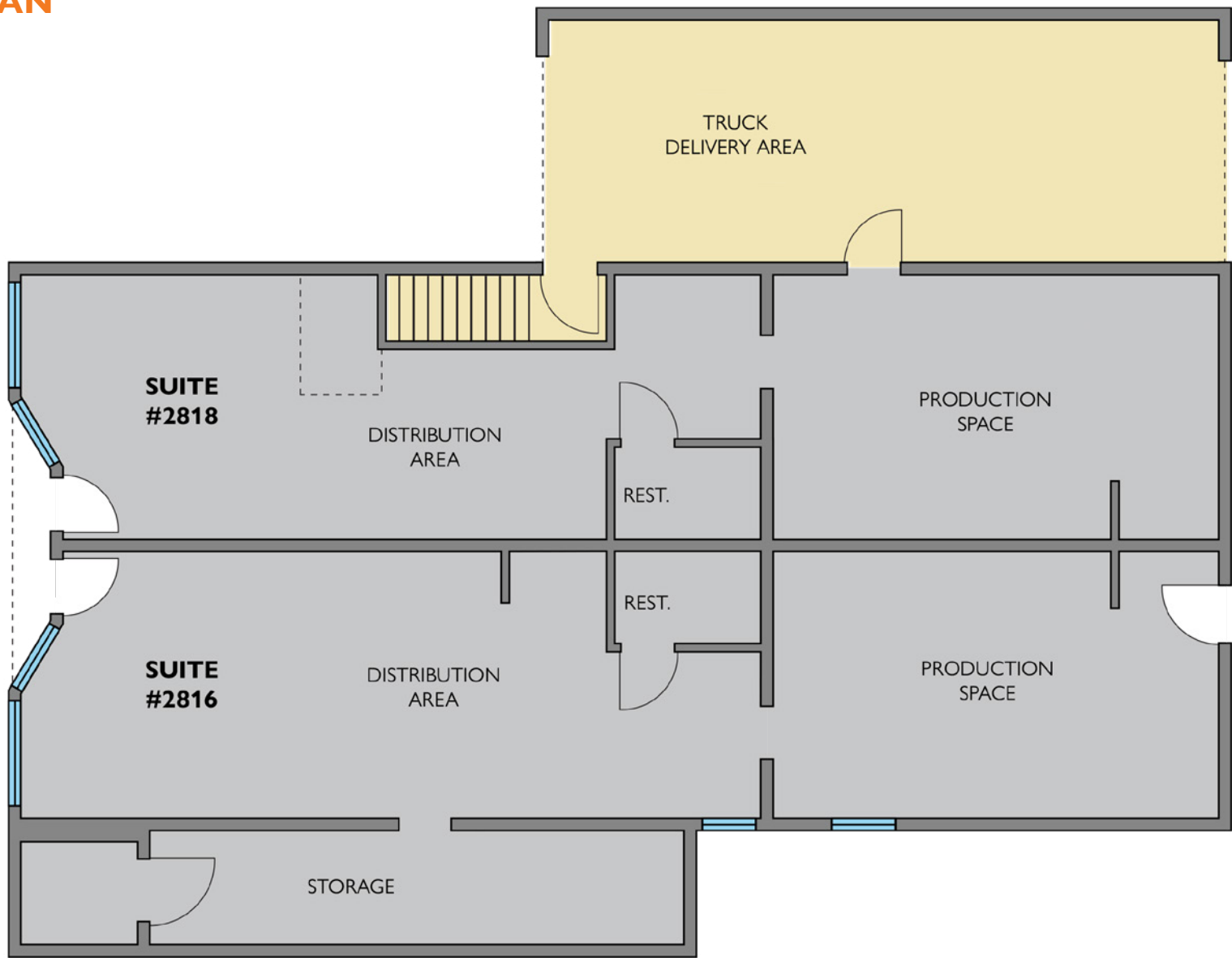


northrimpx.com

819 SE Morrison Street, Ste 110, Portland OR 97214 | [503.525.1925](tel:503.525.1925)
Matthew Schweitzer | matt@northrimpx.com | [503.381.3134](tel:503.381.3134)

FLOOR PLAN

Basement



PRODUCTION AND CATERING KITCHENS IN NE PORTLAND

Haleakala Building 2816 NE Halsey Street, Portland OR 97232

FOR LEASE

Tricia Anderson
tricia@northrimpdx.com | [503.525.1927](tel:503.525.1927)



northrimpdx.com
 819 SE Morrison Street, Ste 110, Portland OR 97214 | [503.525.1925](tel:503.525.1925)
 Matthew Schweitzer | matt@northrimpdx.com | [503.381.3134](tel:503.381.3134)



PRODUCTION AND CATERING KITCHENS IN NE PORTLAND

Haleakala Building 2816 NE Halsey Street, Portland OR 97232

FOR LEASE

Tricia Anderson

tricia@northrimpx.com | [503.525.1927](tel:503.525.1927)



northrimpx.com

819 SE Morrison Street, Ste 110, Portland OR 97214 | [503.525.1925](tel:503.525.1925)

Matthew Schweitzer | matt@northrimpx.com | [503.381.3134](tel:503.381.3134)