

**FOR LEASE**



# VILLAGE SQUARE

2929 & 2941 W US HWY 90, LAKE CITY, FL 32025



[www.Stewart.Team](http://www.Stewart.Team)

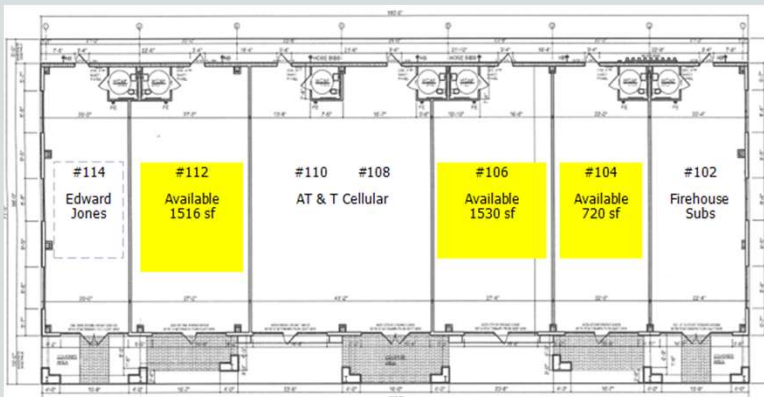
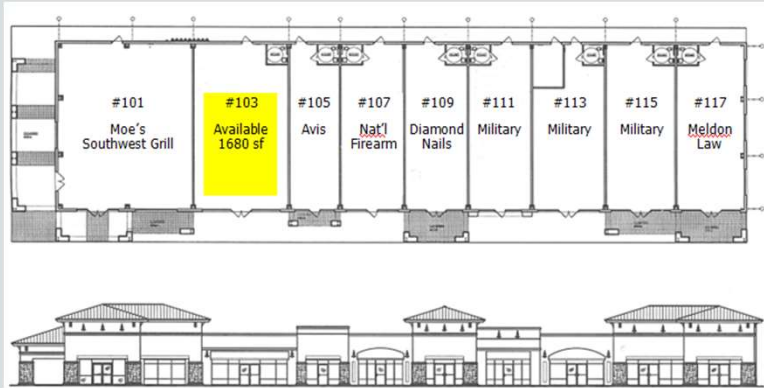


Presented by:  
Scott Stewart  
Debi Bennefield  
386-487-3950  
[Scott@sdstewart.com](mailto:Scott@sdstewart.com)  
[Debi@stewart.team](mailto:Debi@stewart.team)



# VILLAGE SQUARE

2929 & 2941 W US HWY 90, LAKE CITY, FL 32025



# VILLAGE SQUARE

2929 & 2941 W US HWY 90, LAKE CITY, FL 32025



Priced  
at  
\$20/sf  
NNN

Space Available	
Suite 103	1680 sf
Suite 104	720 sf
Suite 106	1530 sf
Suite 112	1516



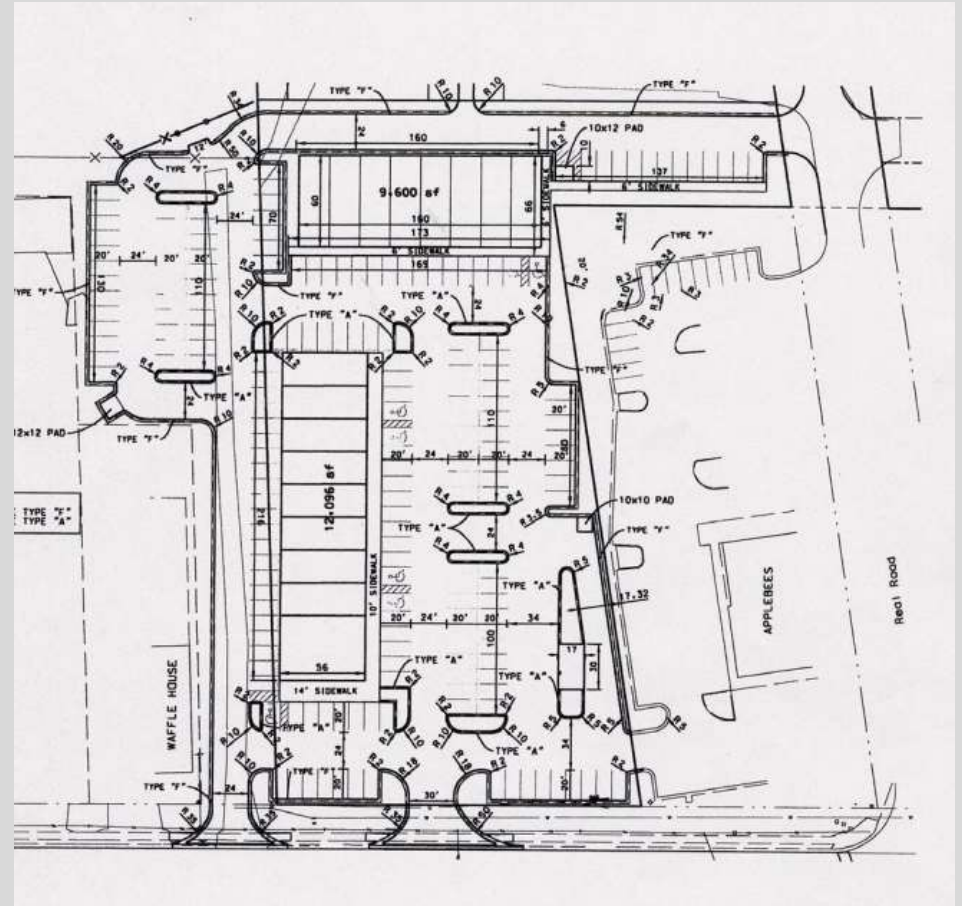
# VILLAGE SQUARE

2929 & 2941 W US HWY 90, LAKE CITY, FL 32025



# VILLAGE SQUARE

2929 & 2941 W US HWY 90, LAKE CITY, FL 32025



# VILLAGE SQUARE

2929 & 2941 W US HWY 90, LAKE CITY, FL 32025



Lake City, Florida is located in North Florida and serves as one of the main gateways in and out of the State of Florida. Lake City is strategically located near the intersection of Interstates 10 and 75 and makes the area easily accessible to all of the southeastern United States. The Lake City area has been recognized as one of the eight best places to do business in the southeastern United States. The area is home to New Millennium Building Systems, Hunter Panels, LLC and Haeco located at the Lake City airport which boasts an 8,000 foot runway.

The area is noted for its natural tourist attractions like the Ichetucknee River, Suwannee River, Santa Fe River and a large U.S. Forest. The community has enjoyed good growth over the past two decades and is set for continued growth for years to come. And of course, you cannot say enough good things about the enviable climate in North Central Florida!

Location	
Nearby Metropolitan City	Distance in Miles
Gainesville	45
Jacksonville	60
Tallahassee	104