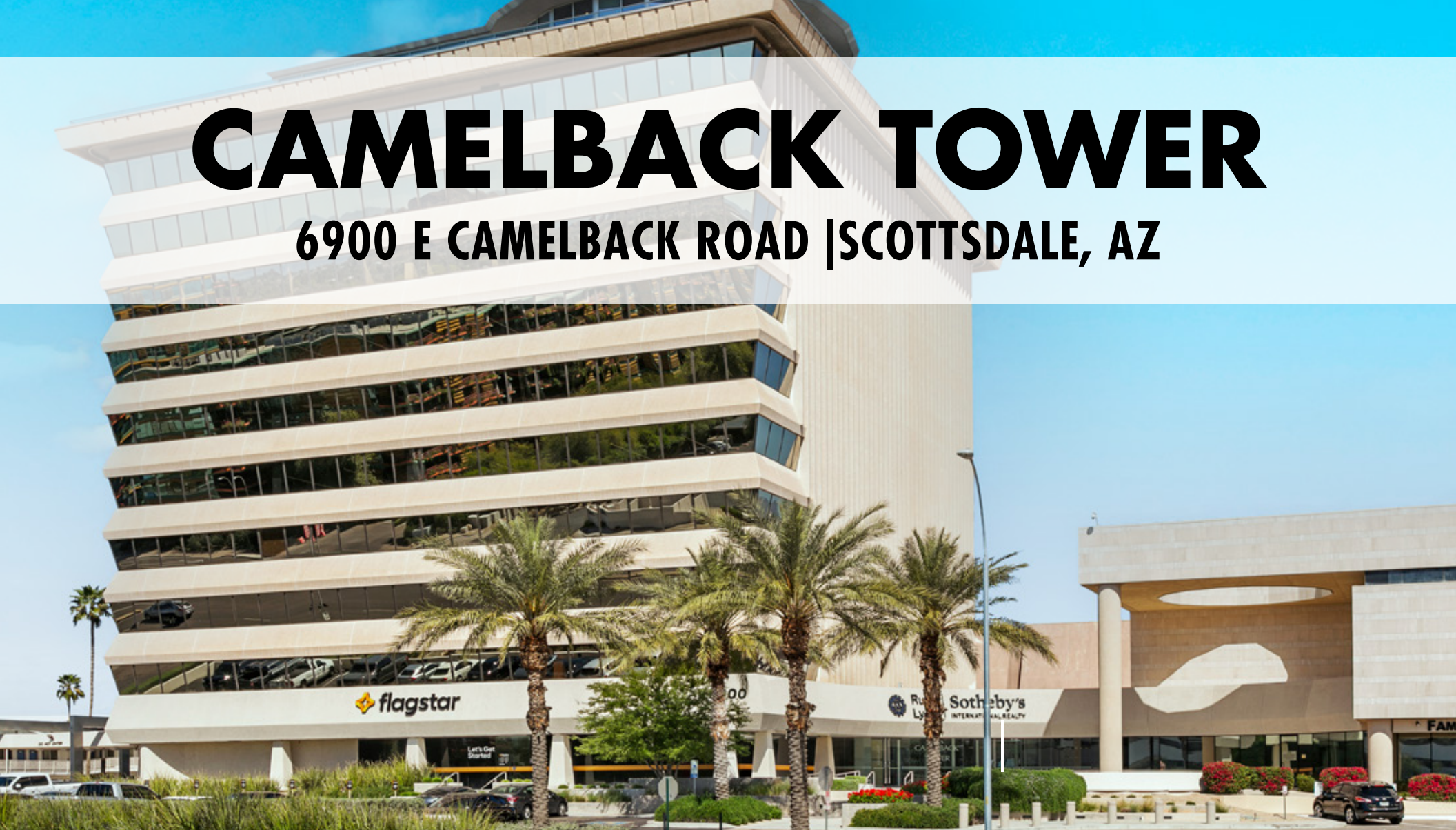


# CAMELBACK TOWER

6900 E CAMELBACK ROAD | SCOTTSDALE, AZ



**FAST & EASY ACCESS TO ALL THE AMENITIES OF SCOTTSDALE FASHION SQUARE**

**NEWMARK**

**Kathleen Morgan**  
Managing Director  
t 602-809-1048  
kathleen.morgan@nmrk.com

# CAMELBACK TOWER

6900 E CAMELBACK ROAD

Scottsdale, AZ

## EIGHTH FLOOR

Suite 820: ±1,033 RSF  
Rental Rate: \$45.00 FS

Suite 840: ±1,056 RSF  
Rental Rate: \$45.00 FS  
Available 3/1/25

## NINTH FLOOR

Suite 910: ±1,007 RSF  
Rental Rate: \$45.00 FS  
Available Immediately  
Ideal for jeweler

 **143,537**  
 **SQUARE FEET**

 **11**  
**STORIES**

 **CLASS A**  
**OFFICE BUILDING**

 **5:1000 SF**  
**PARKING RATIO**  
With underground parking

 **AMPLE**  
**VISITOR PARKING**



**LOCATED IN THE**  
**HEART OF OLD TOWN**  
**SCOTTSDALE**





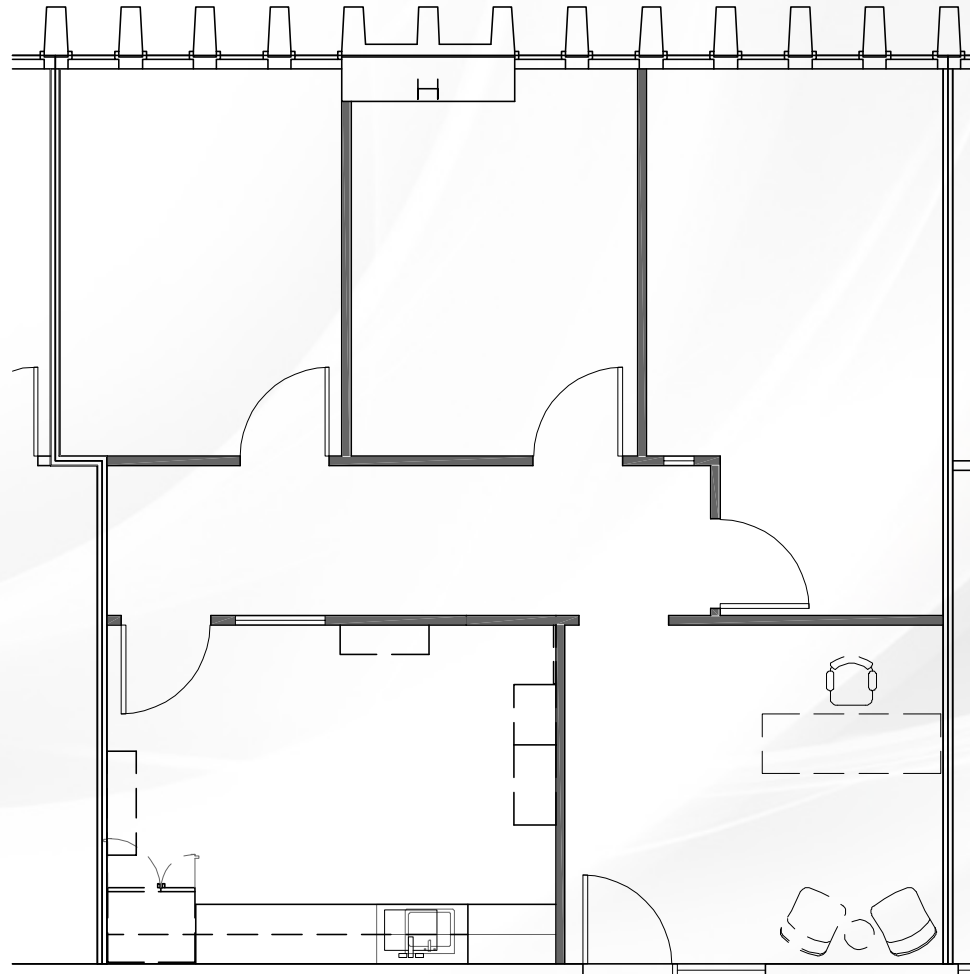
**6900 E CAMELBACK ROAD**

Scottsdale, AZ

**EIGHTH FLOOR**

**SUITE 820: ±1,033 RSF**

**RENTAL RATE: \$45.00 FS**



**NEWMARK**

**Kathleen Morgan**

Managing Director

t 602-809-1048

kathleen.morgan@nmrk.com

**6900 E CAMELBACK ROAD**

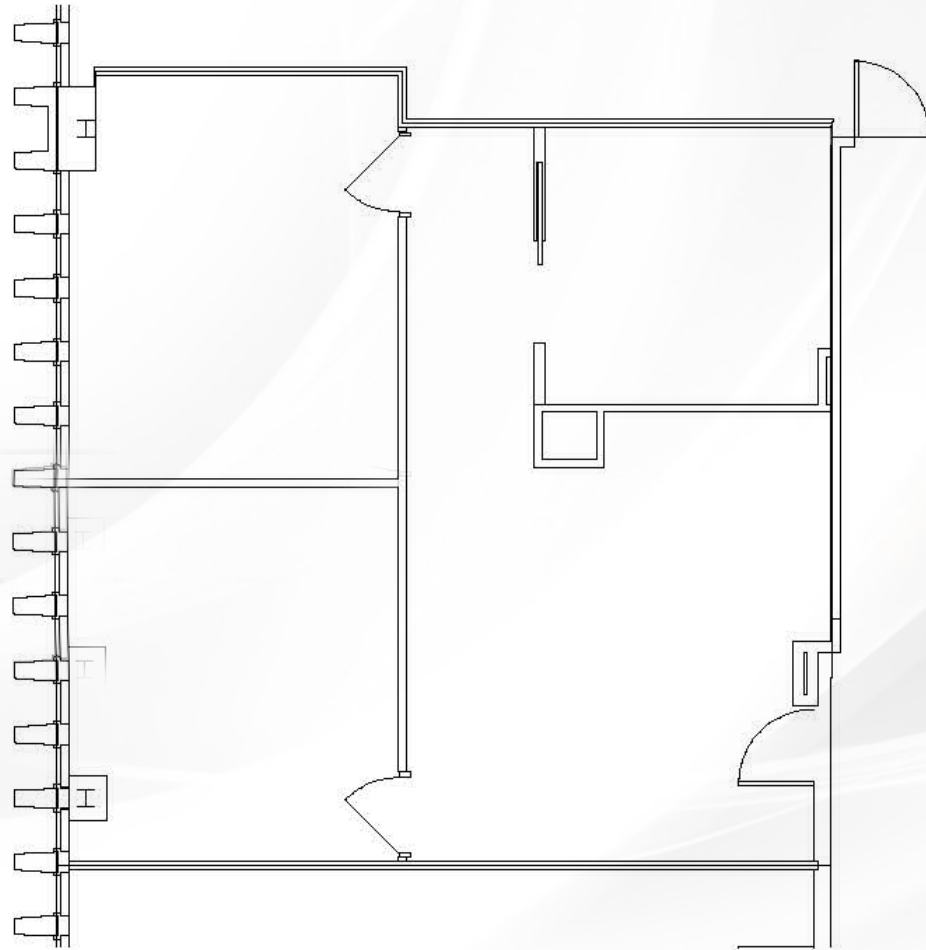
Scottsdale, AZ

**EIGHTH FLOOR**

**SUITE 840: ±1,056 RSF**

**RENTAL RATE: \$45.00 FS**

Available 3/1/25



**NEWMARK**

**Kathleen Morgan**

Managing Director

t 602-809-1048

kathleen.morgan@nmrk.com

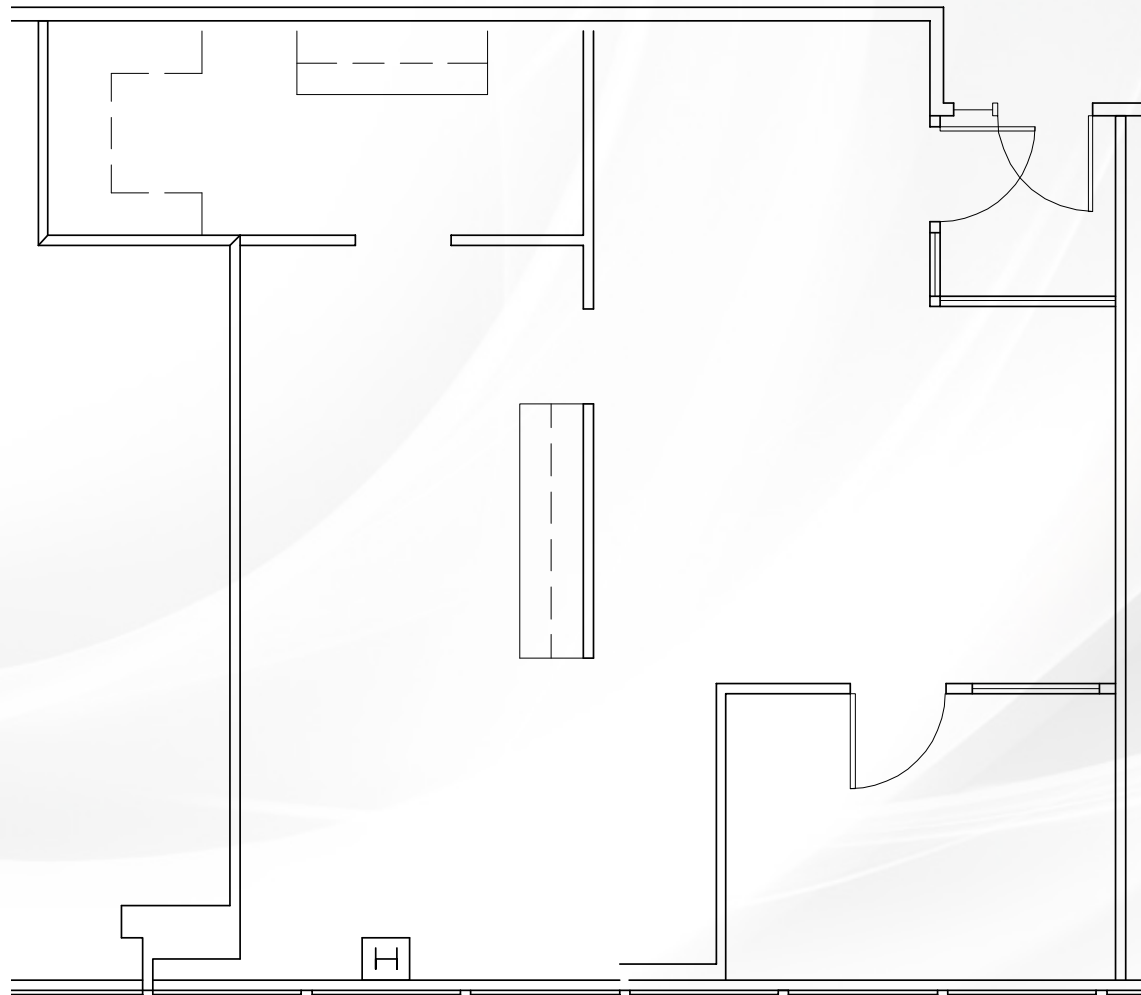
**6900 E CAMELBACK ROAD**

Scottsdale, AZ

**NINTH FLOOR**

**SUITE 910: ±1,007 RSF**

**RENTAL RATE: \$45.00 FS**



**NEWMARK**

**Kathleen Morgan**

Managing Director

t 602-809-1048

kathleen.morgan@nmrk.com



# 85 WALKABILITY SCORE



**NEWMARK**

The information contained herein has been obtained from sources deemed reliable but has not been verified and no guarantee, warranty or representation, either express or implied, is made with respect to such information. Terms of sale or lease and availability are subject to change or withdrawal without notice.

**Kathleen Morgan**  
Managing Director  
t 602-809-1048  
kathleen.morgan@nmrk.com