

# Available for Sublease

+/- 28,000 SF INDUSTRIAL BUILDING

9057 Northfield Dr  
Fort Mill, SC 29707



## EXCLUSIVE ADVISORS:

**Cam Cass**

**BROKER**

Phone: (919) 800-1326

Email: [ccass@colony-commercial.com](mailto:ccass@colony-commercial.com)

**William Maxwell**

**PARTNER**

Phone: (704) 575-1130

Email: [wmaxwell@colony-commercial.com](mailto:wmaxwell@colony-commercial.com)



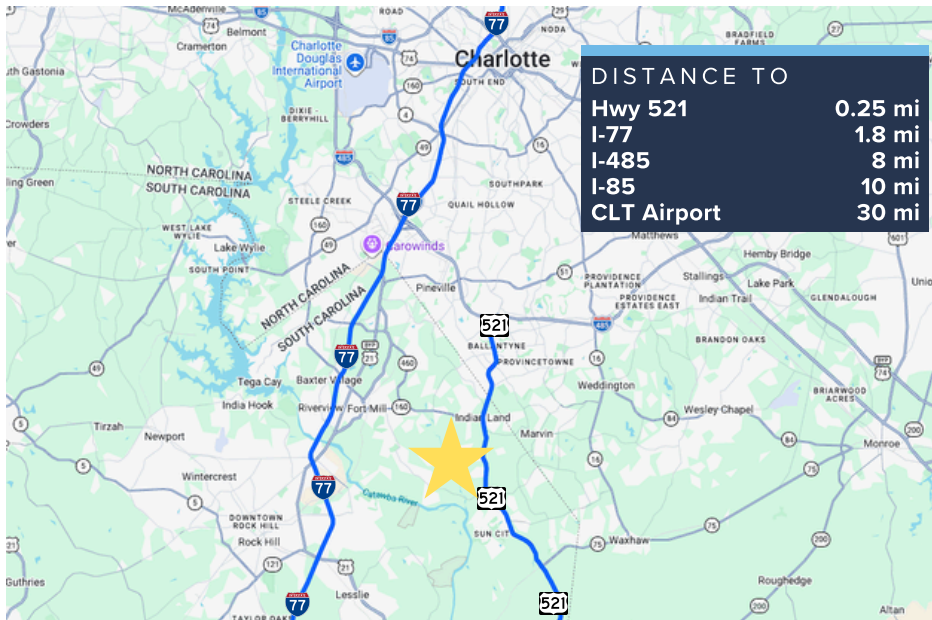
**COLONY**  
COMMERCIAL

# Property Overview



Located directly off the rapidly growing Highway 521 (Charlotte Highway), 9057 Northfield Drive offers a flexible opportunity for a subtenant seeking space in this tight area of the market.

The property offers approximately 28,000 SF of warehouse space, along with the ability to occupy between 300 and 4,500 square feet of office and showroom space, allowing a subtenant to select the layout that best fits their business needs. Features include five (5) dock high loading doors, one (1) oversized drive in door, and ample parking, making the space well suited for a wide range of industrial users.

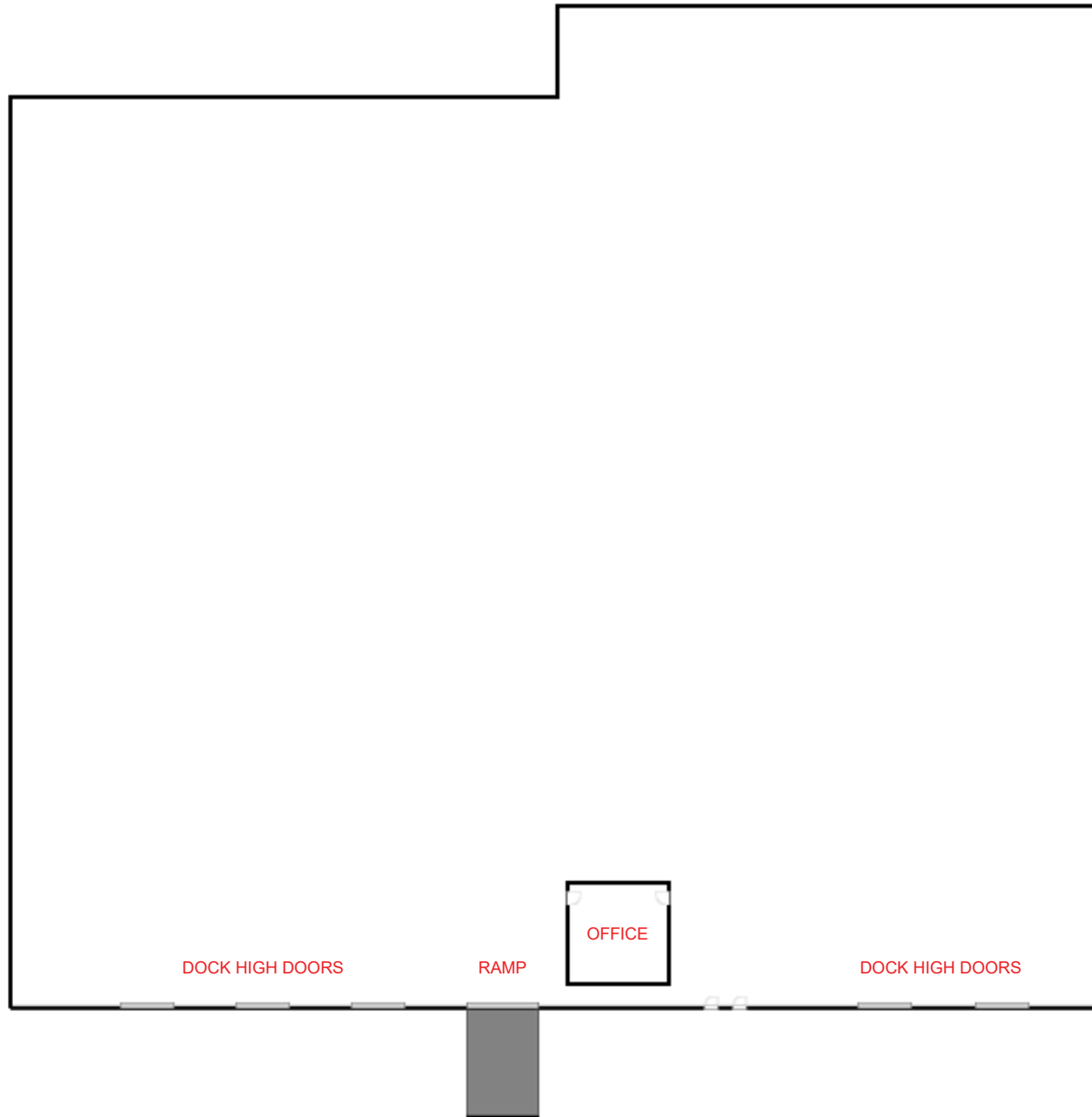


## PROPERTY DETAILS

Address	9057 Northfield Dr Fort Mill, SC 29707
Building SF	+/- 28,000 SF Office: +/- 300 - 4,500 SF
Land Size	+/- 5.13 AC
Year Built	2000
Zoning	LI
Column Spacing	30' x 50'
Clear Height	28'
Dock High Doors	(5) 8 x 10 Dock High Doors
Drive-In Doors	(1) 12 x 16 Drive-In Door
Power	Heavy
Parking	Ample
Outdoor Storage	Available
Pricing	\$8 NNN
Ticam	\$1.26
Lease Expiration	12/31/2030 Flexible Terms available
Additional Information	Sub-landlord is open to various scenarios Demising fence is already in place



# Floor Layout



Colony Commercial has prepared this material for marketing purposes only. We do not guarantee the accuracy or completeness of the information, and interested parties should verify details independently. Colony Commercial assumes no liability for any errors, omissions, or reliance on this information

# Aerial Layout



Colony Commercial has prepared this material for marketing purposes only. We do not guarantee the accuracy or completeness of the information, and interested parties should verify details independently. Colony Commercial assumes no liability for any errors, omissions, or reliance on this information





## Contact Information

### EXCLUSIVE ADVISORS:



**Cam Cass**

**BROKER**

(919) 800-1326

[ccass@colony-commercial.com](mailto:ccass@colony-commercial.com)



**William Maxwell**

**PARTNER**

(704) 575-1130

[wmaxwell@colony-commercial.com](mailto:wmaxwell@colony-commercial.com)

### BROKERAGE CONTACT INFORMATION:

**Colony Commercial, LLC**

1200 E. Morehead Street, STE 280

Charlotte, NC 28204

[WWW.COLONY-COMMERCIAL.COM](http://WWW.COLONY-COMMERCIAL.COM)

