

1422 Woodland Drive

SALINE, MICHIGAN

32,698 SF Available Immediately



Contact Us

Lauren Scarpace
Executive Vice President
+1 248 351 2060
lauren.scarpace@cbre.com

Eugene J. Agnone III
Senior Vice President
+1 248 351 2024
eugene.agnone@cbre.com

Blake Burstein
Senior Associate
+1 248 936 6890
blake.burstein@cbre.com

32,698 SF AVAILABLE

1422 Woodland Drive | Saline, Michigan

Property Features

32,698

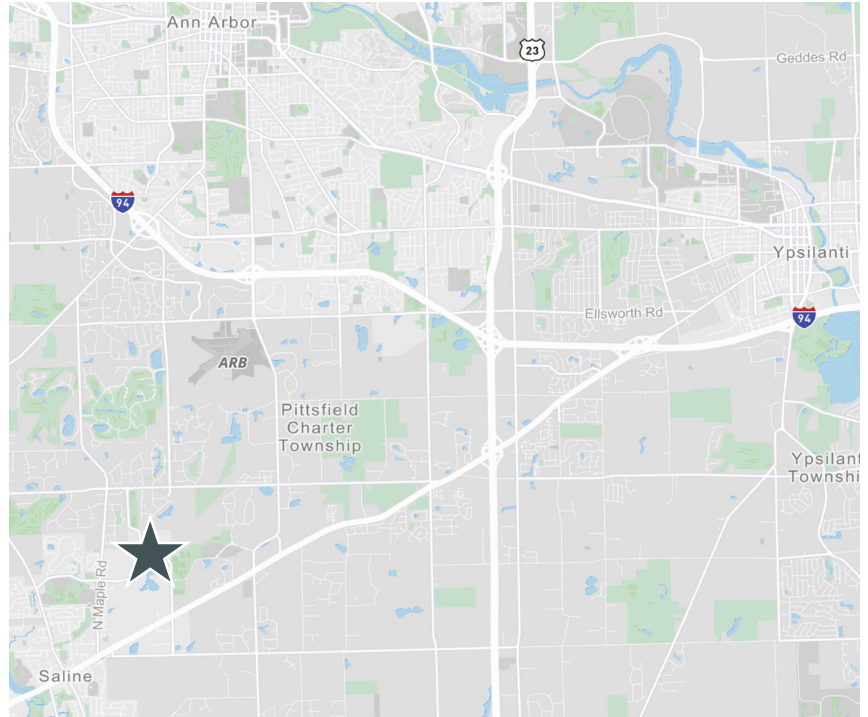
Square Footage

\$2,700,000

Sale Price

\$7.95 NNN

Lease Rate



Total Available	32,698 SF	Grade Doors	One (1)
Office Space	3,560 SF	Docks	Sixteen (16)
Acreage	7.9 AC	Year Built	1984
Ceiling Height	26'	Power	To be Verified
Zoning	I-2	Parking	73 Spaces

Comments

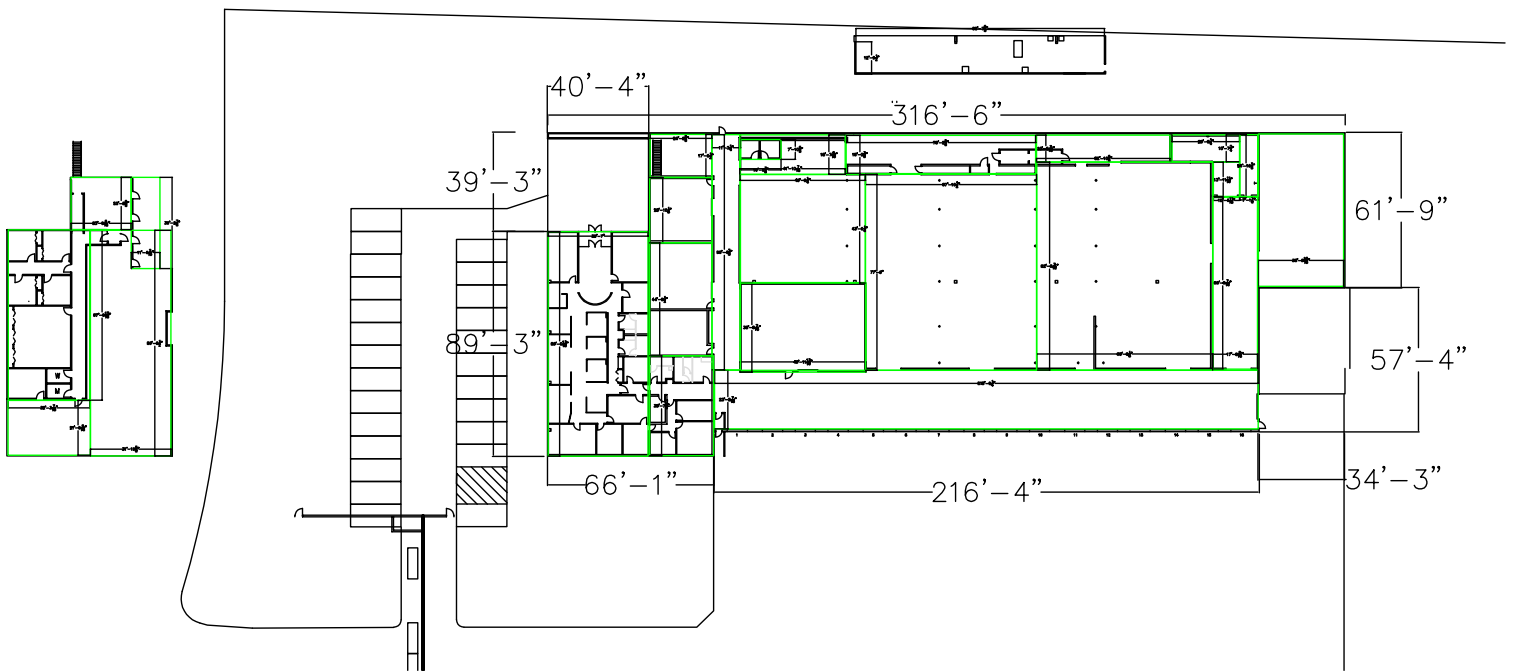
- + Available Immediately
- + Recently Renovated for Warehousing/Distribution
- + 7.9 Acres Allowing for Expansion
- + High Dock Door Ratio
- + Served by Ann Arbor Railroad
- + +/- 7,000 SF of Bonus Mezzanine Space

32,698 SF AVAILABLE

1422 Woodland Drive | Saline, Michigan

For Sale or Lease

Site Plan



32,698 SF AVAILABLE

1422 Woodland Drive | Saline, Michigan

For Sale or Lease

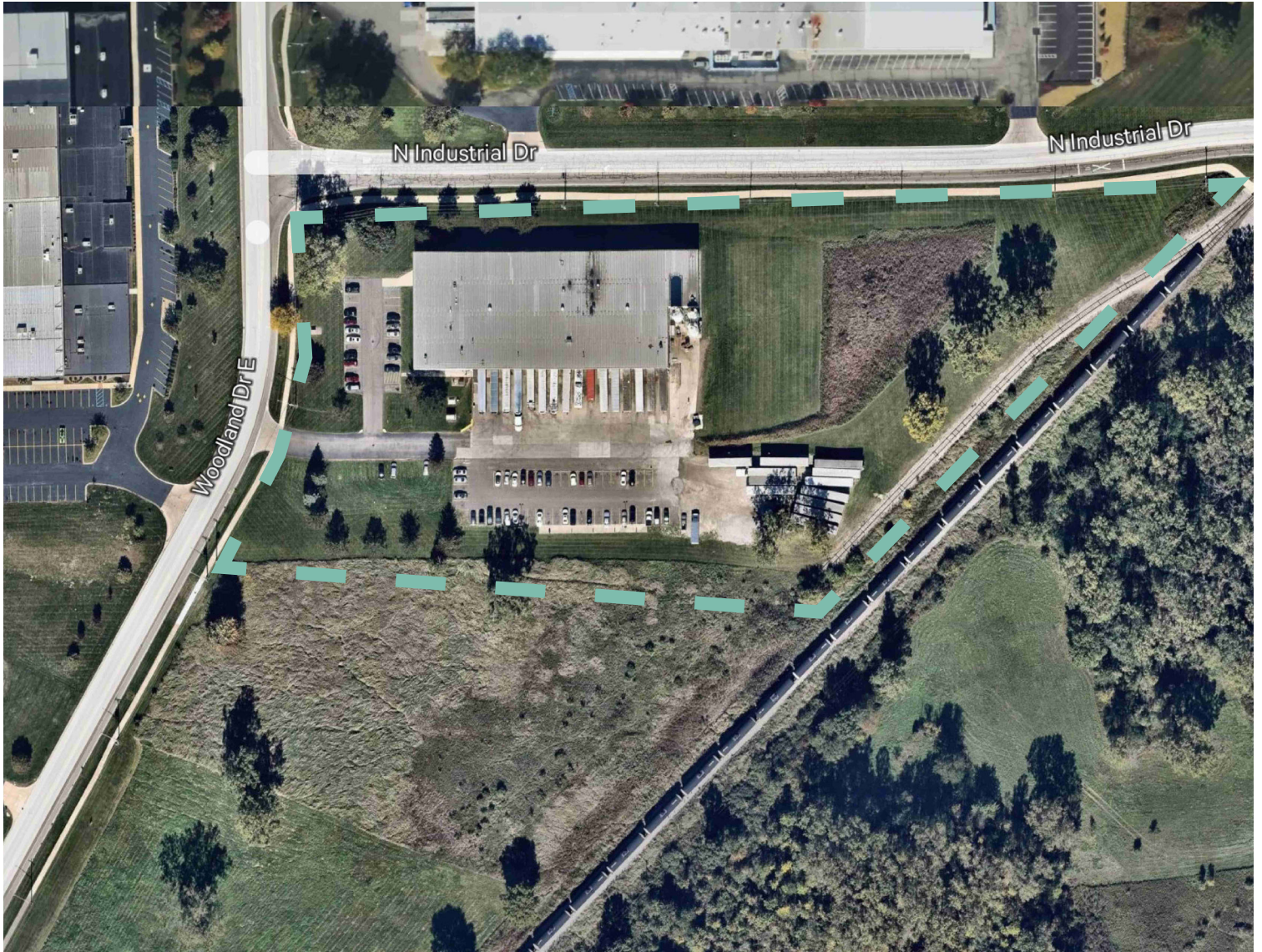
Photos



32,698 SF AVAILABLE

1422 Woodland Drive | Saline, Michigan

For Sale or Lease



Contact Us

Lauren Scarpace

Executive Vice President
+1 248 351 2060
lauren.scarpace@cbre.com

Eugene J. Agnone III

Senior Vice President
+1 248 351 2024
eugene.agnone@cbre.com

Blake Burstein

Senior Associate
+1 248 936 6890
blake.burstein@cbre.com

© 2024 CBRE, Inc. All rights reserved. This information has been obtained from sources believed reliable, but has not been verified for accuracy or completeness. You should conduct a careful, independent investigation of the property and verify all information. Any reliance on this information is solely at your own risk. CBRE and the CBRE logo are service marks of CBRE, Inc. All other marks displayed on this document are the property of their respective owners, and the use of such logos does not imply any affiliation with or endorsement of CBRE. Photos herein are the property of their respective owners. Use of these images without the express written consent of the owner is prohibited.