



# ***HISTORIC CARVER'S STATION***

***REDEVELOPMENT OPPORTUNITY***

**PRICE**  
**\$200,000**

***53725 NV-376, ROUND MOUNTAIN  
NV 89045-9737***

**KW GROUP ONE**  
KELLERWILLIAMS<sup>INC</sup>



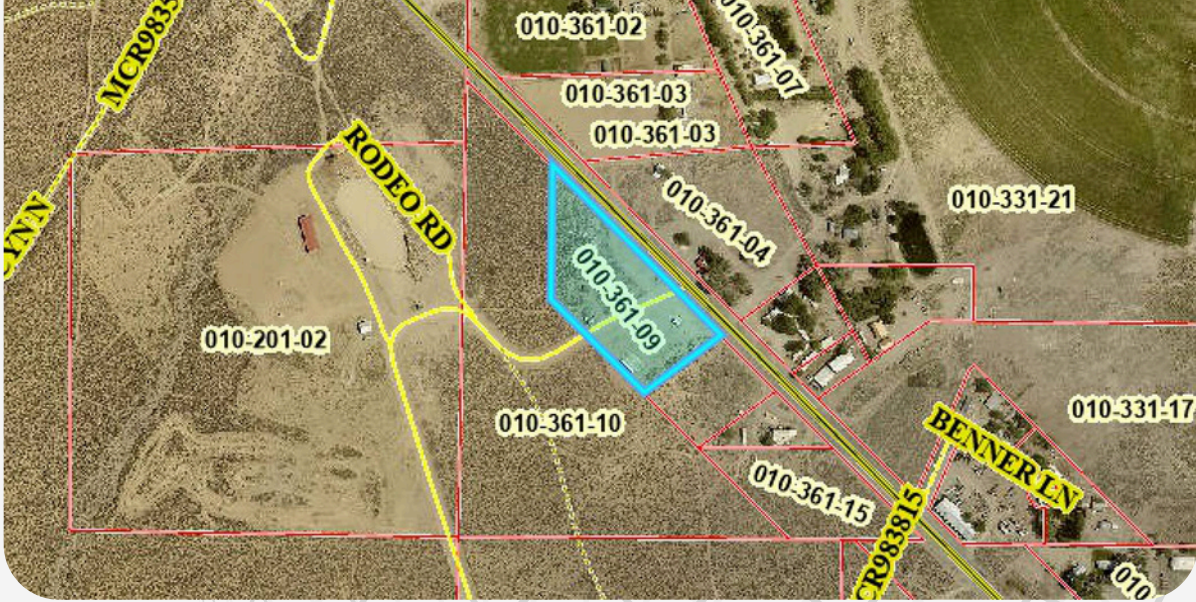
**kw** GROUP ONE<sup>INC.</sup>  
KELLERWILLIAMS.

---

# **PROPERTY DETAILS**

Own a historic piece of Nevada! Carver's Station was a well-known watering hole and roadside rest for travelers making the long drive through Big Smoky Valley, connecting Austin and Tonopah. For years, it served as a vital stop for weary drivers to rest and refresh while navigating Nevada's rugged terrain. This iconic station holds a rich history, offering a glimpse into the lives of early pioneers and settlers. Now, you can own a piece of Nevada's past and become part of its legendary story, preserving its historical significance for generations to come.

ABOUT THE PROPERTY



# OUR LOCATION

**KW GROUP ONE**  
KELLERWILLIAMS

This redevelopment property spans two separate APNs: 010-361-09 & 010-316-04 and is located in Nye County. Once a historic bar, restaurant, and RV park, the property fronts NV Hwy 376 and is ripe for commercial redevelopment as a saloon, RV Park, or western-themed resort.

**53725 NV-376, ROUND MOUNTAIN  
NV 89045-9737**



# ***PROPERTY HIGHLIGHTS***

- ✓ Historic Site
- ✓ Mountain Views
- ✓ Mining Community
- ✓ Hwy 376 Frontage

# CONTACT US

## ***RICCI RODRIGUEZ-ELKINS***

*Sparks Broker-Manager*  
*BS.146909.MGR*

 **relkins@kw.com**

 **+775-240-5143**

 **www.nv-cre.com**

