

# Exhibit A

## VALLE NUEVO COMMERCIAL CENTER #1

BEING A PORTION OF TRACTS 11, 12A, 13A2, 14 AND  
14-A, BLOCK 5, SOCORRO GRANT  
CITY OF SOCORRO, EL PASO COUNTY TEXAS  
CONTAINING: 23.56 ACRES ±

1. OWNER CERTIFY THAT THE DRAWING AND THE DIMENSIONS ARE ACCURATE TO THE BEST OF HIS KNOWLEDGE AND BELIEF AND THAT THE DIMENSIONS AND THE DIMENSIONS OF THE LOTS AND TRACTS ARE CORRECT AND THAT THE DIMENSIONS OF THE LOTS AND TRACTS ARE CORRECT AND THAT THE DIMENSIONS OF THE LOTS AND TRACTS ARE CORRECT



3/8/22  
DATE

2. THE EL PASO COUNTY WATER IMPROVEMENT DISTRICT NO. 1 DISTRICT APPROVES THE DRAWING AS BEING THE CORRECT REPRESENTATION OF THE PROPERTY AS SHOWN IN BLOCK OF THE ABOVE DESCRIBED TRACTS AND TRACTS AND THAT THE DIMENSIONS AND THE DIMENSIONS OF THE LOTS AND TRACTS ARE CORRECT AND THAT THE DIMENSIONS OF THE LOTS AND TRACTS ARE CORRECT

3/14/22  
DATE

3. THE CITY OF SOCORRO APPROVES THE DRAWING AS BEING THE CORRECT REPRESENTATION OF THE PROPERTY AS SHOWN IN BLOCK OF THE ABOVE DESCRIBED TRACTS AND TRACTS AND THAT THE DIMENSIONS AND THE DIMENSIONS OF THE LOTS AND TRACTS ARE CORRECT AND THAT THE DIMENSIONS OF THE LOTS AND TRACTS ARE CORRECT

LINE NUMBER	DESCRIPTION	AREA
121	439.00' ±	12.37
122	500.00' ±	14.20
123	439.00' ±	12.37
124	500.00' ±	14.20
125	439.00' ±	12.37
126	500.00' ±	14.20
127	439.00' ±	12.37
128	500.00' ±	14.20
129	439.00' ±	12.37
130	500.00' ±	14.20

LINE NUMBER	DESCRIPTION	AREA
131	439.00' ±	12.37
132	500.00' ±	14.20
133	439.00' ±	12.37
134	500.00' ±	14.20
135	439.00' ±	12.37
136	500.00' ±	14.20
137	439.00' ±	12.37
138	500.00' ±	14.20
139	439.00' ±	12.37
140	500.00' ±	14.20

LINE NUMBER	DESCRIPTION	AREA
141	439.00' ±	12.37
142	500.00' ±	14.20
143	439.00' ±	12.37
144	500.00' ±	14.20
145	439.00' ±	12.37
146	500.00' ±	14.20
147	439.00' ±	12.37
148	500.00' ±	14.20
149	439.00' ±	12.37
150	500.00' ±	14.20

LINE NUMBER	DESCRIPTION	AREA
151	439.00' ±	12.37
152	500.00' ±	14.20
153	439.00' ±	12.37
154	500.00' ±	14.20
155	439.00' ±	12.37
156	500.00' ±	14.20
157	439.00' ±	12.37
158	500.00' ±	14.20
159	439.00' ±	12.37
160	500.00' ±	14.20

LINE NUMBER	DESCRIPTION	AREA
161	439.00' ±	12.37
162	500.00' ±	14.20
163	439.00' ±	12.37
164	500.00' ±	14.20
165	439.00' ±	12.37
166	500.00' ±	14.20
167	439.00' ±	12.37
168	500.00' ±	14.20
169	439.00' ±	12.37
170	500.00' ±	14.20

LINE NUMBER	DESCRIPTION	AREA
171	439.00' ±	12.37
172	500.00' ±	14.20
173	439.00' ±	12.37
174	500.00' ±	14.20
175	439.00' ±	12.37
176	500.00' ±	14.20
177	439.00' ±	12.37
178	500.00' ±	14.20
179	439.00' ±	12.37
180	500.00' ±	14.20

LINE NUMBER	DESCRIPTION	AREA
181	439.00' ±	12.37
182	500.00' ±	14.20
183	439.00' ±	12.37
184	500.00' ±	14.20
185	439.00' ±	12.37
186	500.00' ±	14.20
187	439.00' ±	12.37
188	500.00' ±	14.20
189	439.00' ±	12.37
190	500.00' ±	14.20

LINE NUMBER	DESCRIPTION	AREA
191	439.00' ±	12.37
192	500.00' ±	14.20
193	439.00' ±	12.37
194	500.00' ±	14.20
195	439.00' ±	12.37
196	500.00' ±	14.20
197	439.00' ±	12.37
198	500.00' ±	14.20
199	439.00' ±	12.37
200	500.00' ±	14.20

LINE NUMBER	DESCRIPTION	AREA
201	439.00' ±	12.37
202	500.00' ±	14.20
203	439.00' ±	12.37
204	500.00' ±	14.20
205	439.00' ±	12.37
206	500.00' ±	14.20
207	439.00' ±	12.37
208	500.00' ±	14.20
209	439.00' ±	12.37
210	500.00' ±	14.20

LEGEND

- SUBDIVISION BOUNDARY
- - - - - RIGHT-OF-WAY BOUNDARY
- LOT OR BLOCK NUMBER
- ⑨ PROPOSED BOUNDARY
- ██ WATER OR RAIN GUTTER
- ██ SUBDIVISION BOUNDARY
- ██ MARKET PLACE BOUNDARY
- ██ COORDINATE POINTS

EL PASO COUNTY WATER IMPROVEMENT DISTRICT No. 1  
IRRIGABLE LAND EXHIBIT  
SCALE 1" = 100'

TOTAL LOTS

ORIGINAL	418
TOTAL	418

BENCHMARK

FLOOD ZONE

OWNER

LOWER EAST VALLEY HOLDING CO., LLC

OWNER

EP JAMES, LTD.

OWNER

LOWER EAST VALLEY, LLC

CONTRACT: ENRIQUE ESCOBAR

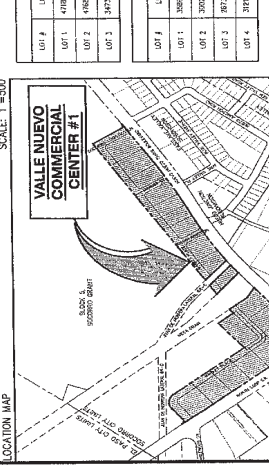
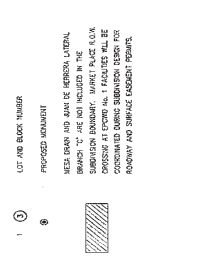
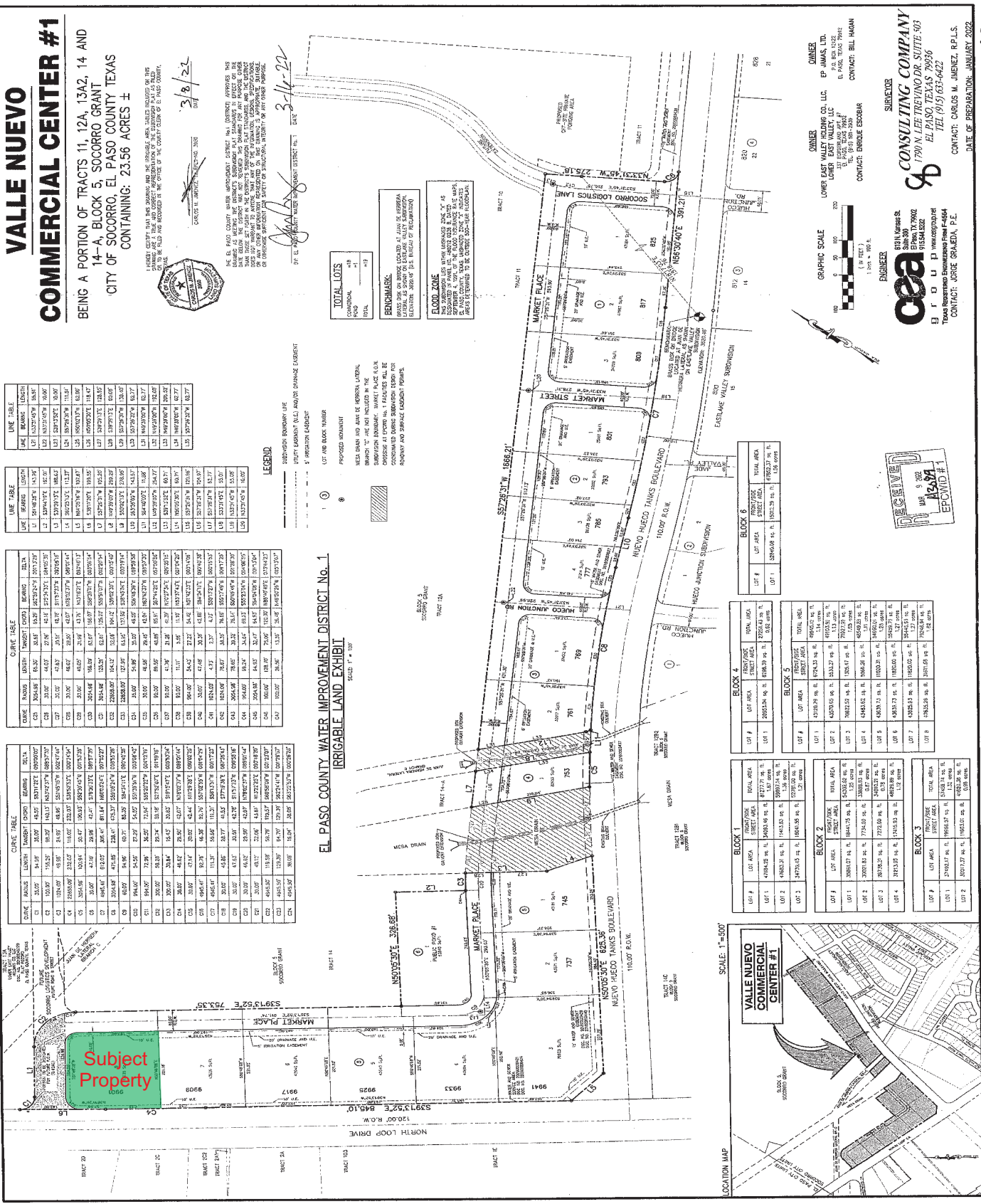
SURVEYOR

CSA CONSULTING COMPANY

1700 N. LEE TRAVINO DR. SUITE 503  
EL PASO, TEXAS 79936  
TEL: (915) 634-6622

CONTACT: CARLOS M. JIMENEZ, R.P.L.S.

DATE OF PREPARATION: JANUARY 2022



3099