

2000 Oxford Drive

Bethel Park, PA 15102



Available **Premises**

4th Floor

- 698 RSF up to 3,868 RSF

5th Floor

- 2,598 RSF
- 3,180 RSF
- 5,257 RSF

6th Floor

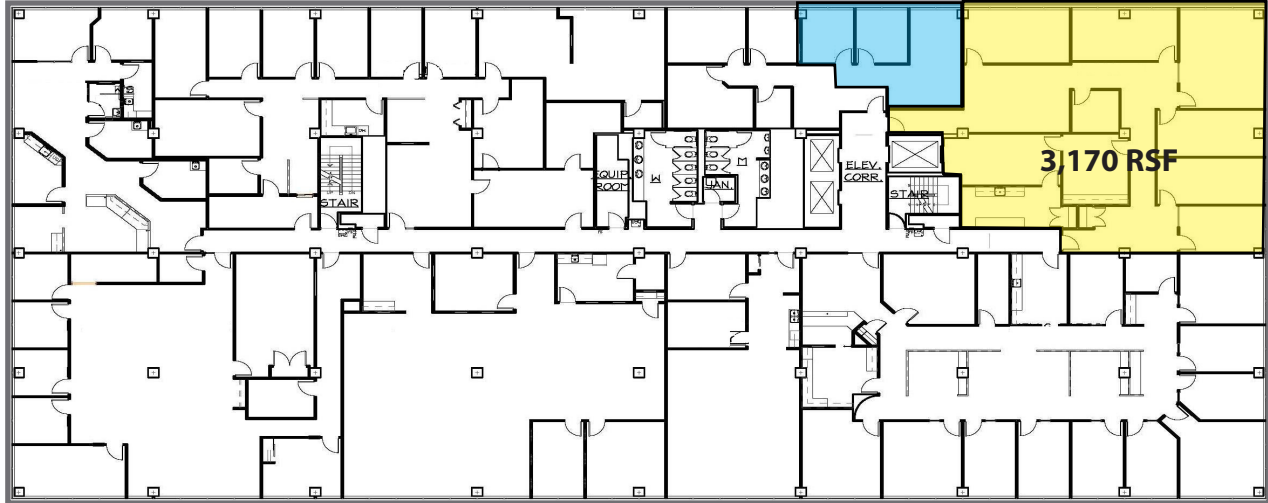
- 4,024 RSF

Property **Highlights**

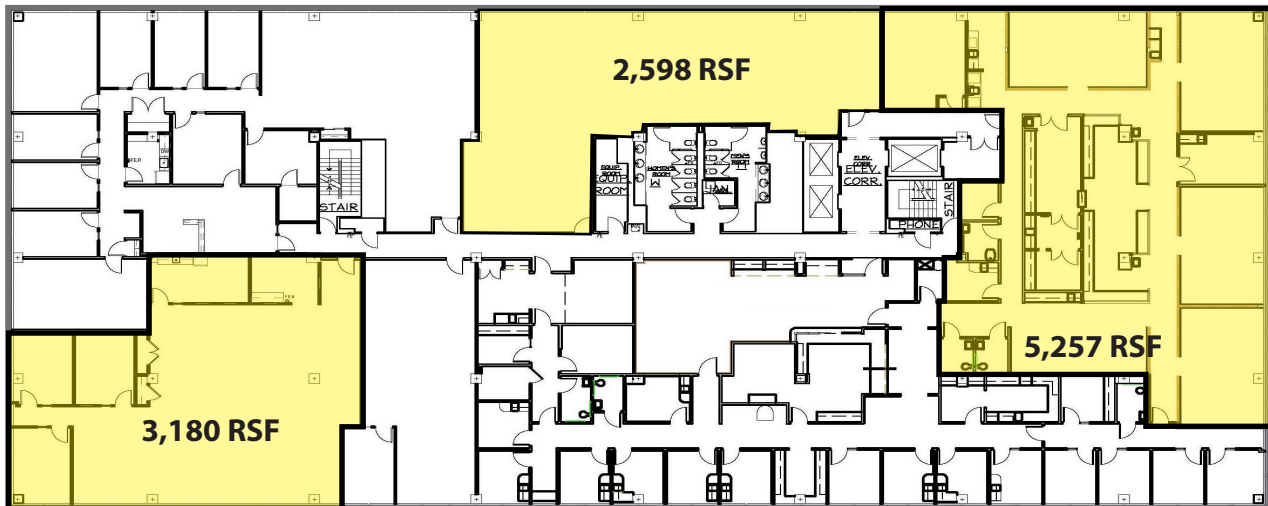
- Class "A" office building
- High end finishes throughout
- Banded glass providing ample light throughout
- On-site property management
- Monument signage opportunity
- Second generation medical space opportunities
- Excellent access and visibility, just steps from the South Hills Village and Village Square in the heart of the South Hills marketplace
- Many recent capital improvements

4th Floor

698 RSF



5th Floor



6th Floor





AVERAGE DAILY TRAFFIC

Fort Couch Road @ Oxford Drive 25,446

For more information please contact:

Spencer L. Baker

Associate

Oxford Realty Services, Inc.

412.261.0200, ext 3460

sbaker@oxfordrealtyservices.com

Joe Tosi, SIOR

Executive Vice President

Oxford Realty Services, Inc.

412.261.0200, ext 3471

jtosi@oxfordrealtyservices.com

OXFORD

REALTY SERVICES, INC.

2545 Railroad Street

Pittsburgh, PA 15222

www.oxfordrealtyservices.com

Although all information furnished regarding property for sale, rental or financing is from sources deemed reliable, such information has not been verified, and no express representation is made nor is any to be implied as to the accuracy thereof, and it is submitted subject to errors, omissions, change of price, rental or other conditions, prior sale, lease or financing, or withdrawal without notice. Rental terms and all dimensions are approximate and specifications are subject to change without notice. Oxford Realty Services, Inc., an independent real estate services company.