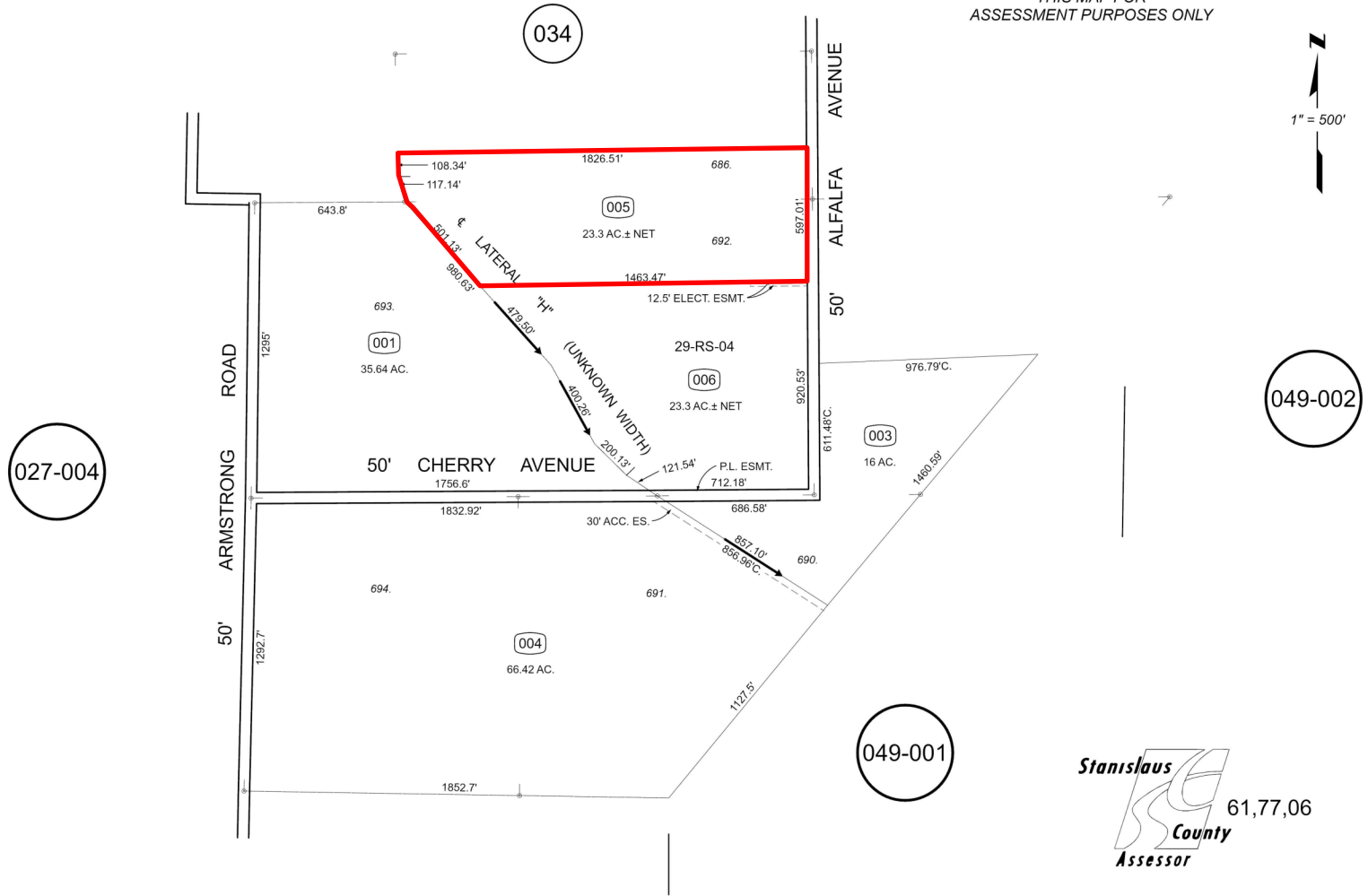
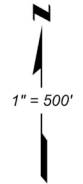


PORTION SECTION 14 T.6S. R.8E. M.D.B. & M.
 POR. PATTERSON COLONY SUBTRACT NO. 2 - LTS. 690-694 & POR. 686 & 689 (05M23)

TRA
 083 018
 083 036

048 — 035

THIS MAP FOR
 ASSESSMENT PURPOSES ONLY



FROM: D-041, 048-035
 DRAWN: 1/3/77
 REVISED: 6/15/05 MB, 6/13/07 MB, 2/6/24 MQ

