

**GRAHAM** | & ASSOCIATES

MISSION SANTA BARBARA

**RETAIL / OFFICE SPACE FOR LEASE - SUITE 101**

5412 AVENIDA DE LOS ROBLES | VISALIA, CA

LEASING BROCHURE

# RETAIL / OFFICE SPACE FOR LEASE

📍 5412 AVENIDA DE LOS ROBLES | VISALIA, CA

## EXECUTIVE SUMMARY

### Lease Rate

- \$2.10/SF (NNN)

### Key Highlights

- Available Space: 1,786± SF
- Suite 101 available for immediate lease
- Lease Rate: \$2.10/SF (NNN)
- Ideal for retail, office, medical, or service-oriented businesses
- Excellent visibility and convenient access
- Located within an established commercial corridor
- Flexible floor plan to accommodate a variety of uses
- APN: 085-240-024



## CONTACT

**Matthew D. Graham**

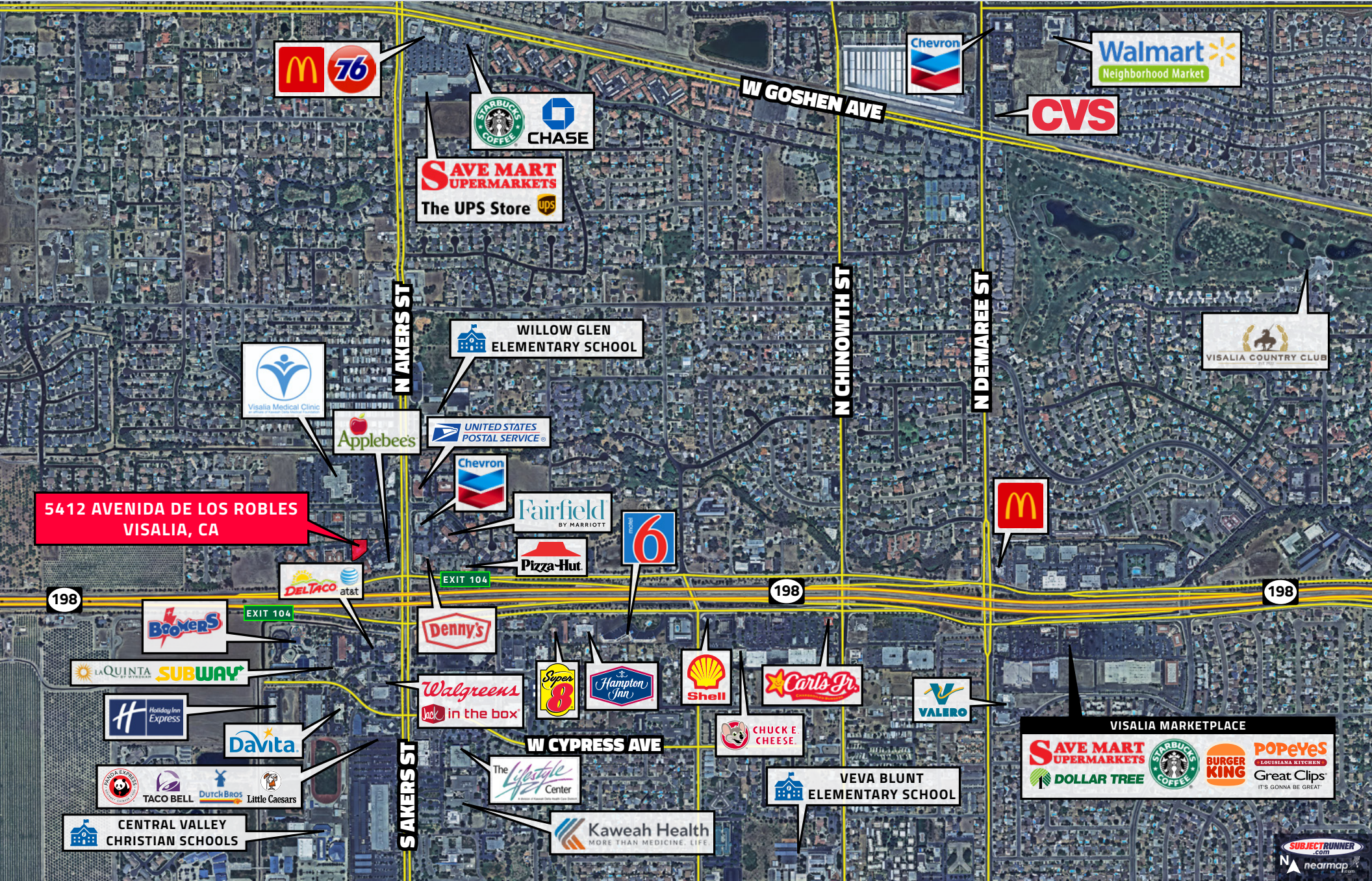
DRE# 01804235

O | 559.754.3020

F | 559.429.4016

**GRAHAM**  
&  
**ASSOCIATES**  
COMMERCIAL • AGRICULTURE • ESTATES

# CLOSE-UP AERIAL



**5412 AVENIDA DE LOS ROBLES  
VISALIA, CA**

**Matthew D. Graham**  
DRE# 01804235

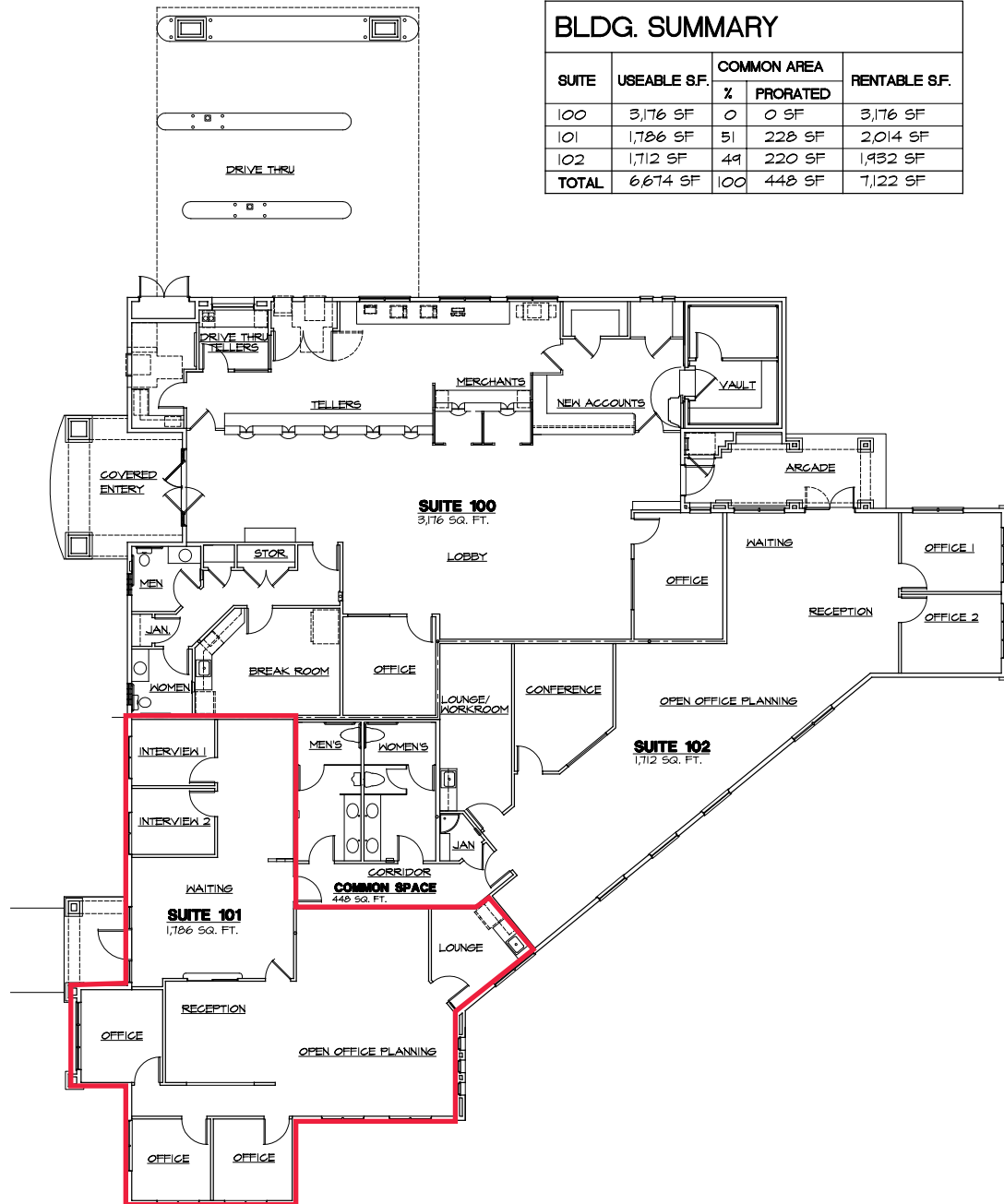
O | 559.754.3020  
F | 559.429.4016

GRAHAM & ASSOCIATES





# FLOOR PLAN



## MARKET OVERVIEW

Visalia is a city of 136,000 people located in the San Joaquin Valley of Central California, equidistant from the Ports of Los Angeles/Long Beach and Oakland. It is home to one of the finest downtown areas between Stockton and Bakersfield with a variety of restaurants, shops, boutiques, entertainment and event centers, many professional office tenants as well as the area's largest hospital Kaweah Delta Healthcare District. Visalia is also the County Seat for Tulare County, which is reflective of its position as the economic and cultural hub of the county.

As the regional hub of the greater Tulare/Kings County region, Visalia has seen a robust and growing economy. It is part of Tulare County, which is the more populated of the two, with 442,179 people and a median age of just 28.5 years old - one of the youngest regional populations in California. Tulare County is also within an Enterprise Zone which offers a number of economically-favorable incentives such as 21-Day permit fast-tracking, 5-year, no interest, development fee deferral, state tax credits for hiring and purchasing qualified equipment, accelerated expense deductions, net interest deduction and preference points on state contracts.

- **Economic Hub:** Visalia serves as the economic and cultural hub of Tulare County, reflecting its importance in the region.
- **Young, Growing Population:** Tulare County, where Visalia is located, has a median age of just 28.5 years, making it one of the youngest populations in California.
- **Enterprise Zone Benefits:** Tulare County is within an Enterprise Zone offering favorable economic incentives, including fast-tracked permits, tax credits, and development fee deferrals, enhancing the business environment.



*image Clockwise from top:*

1. Fox Theatre ( $\pm 0.7$  miles from subject)
2. Vintage Press Restaurant ( $\pm 0.7$  miles from subject)
3. Lake Kaweah Marina ( $\pm 20$  miles from subject)

**Matthew D. Graham**  
DRE# 01804235

O | 559.754.3020  
F | 559.429.4016



GRAHAM | & ASSOCIATES