



4900 Broadway

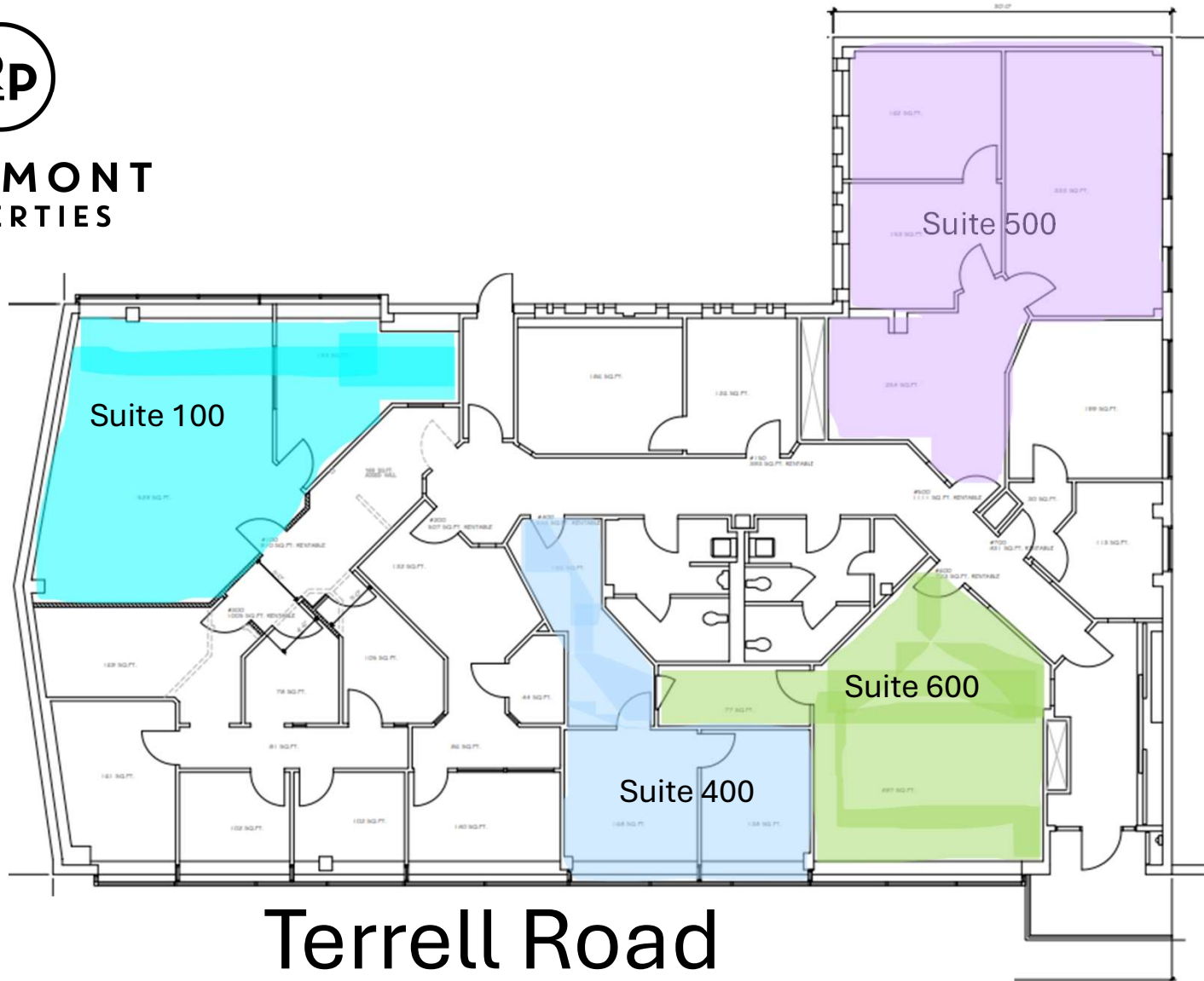


RIDGEMONT
PROPERTIES



**RIDGEMONT
PROPERTIES**

Broadway



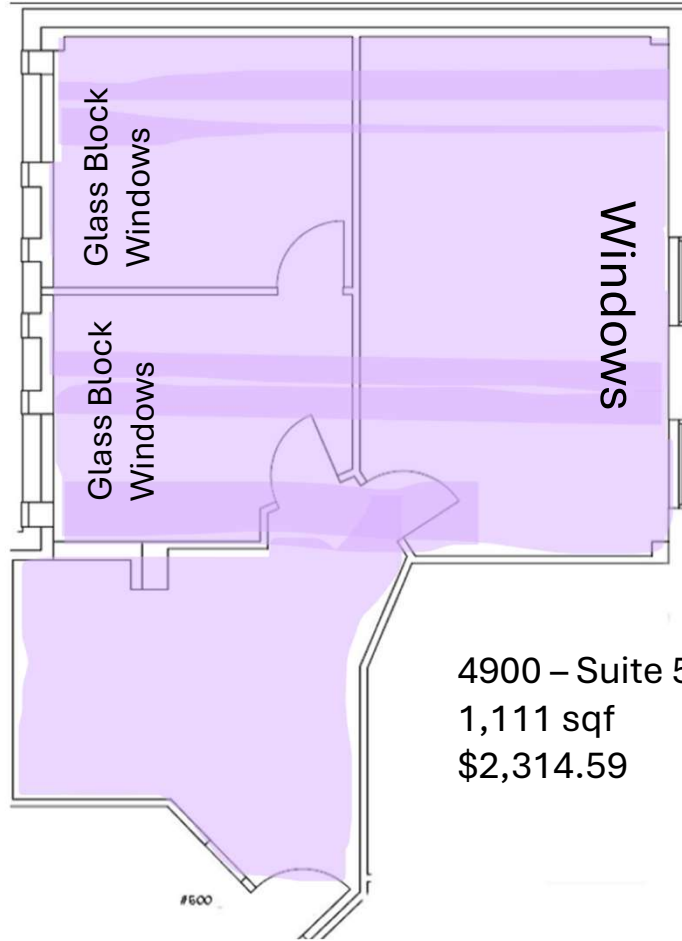
Terrell Road

4900 Broadway - \$25/SF

- Suite 600 (723 SF) - \$1,506.25/month
 - Available immediately
- Suite 500 (1,111 SF) - \$2,314.59/month
 - Available immediately
- Suite 100 (910 SF) - \$1,895.84/month
 - Available immediately
- Suite 400 (556 SF) - \$1,158.33/month
 - Available immediately

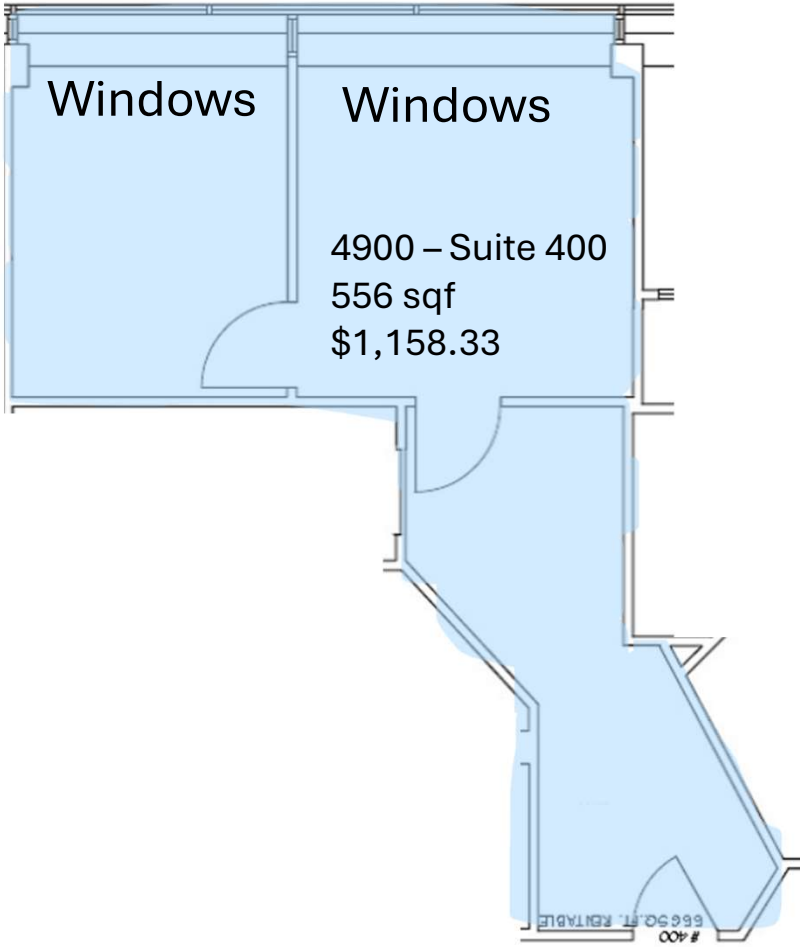
FAQs

- Rent includes daily cleaning of the common areas and suites. You get trash collection, dusting and vacuuming.
- Rent includes water and electricity. You will need to provide your own internet. The building's vendor is Spectrum.
- Renters get 24 hour access with a key fob. The building is open during business hours and locks automatically at 6:30pm and unlocks at 7:00am.
- The square footage listed reflects the square footage of the suite plus the load factor for the building common areas.

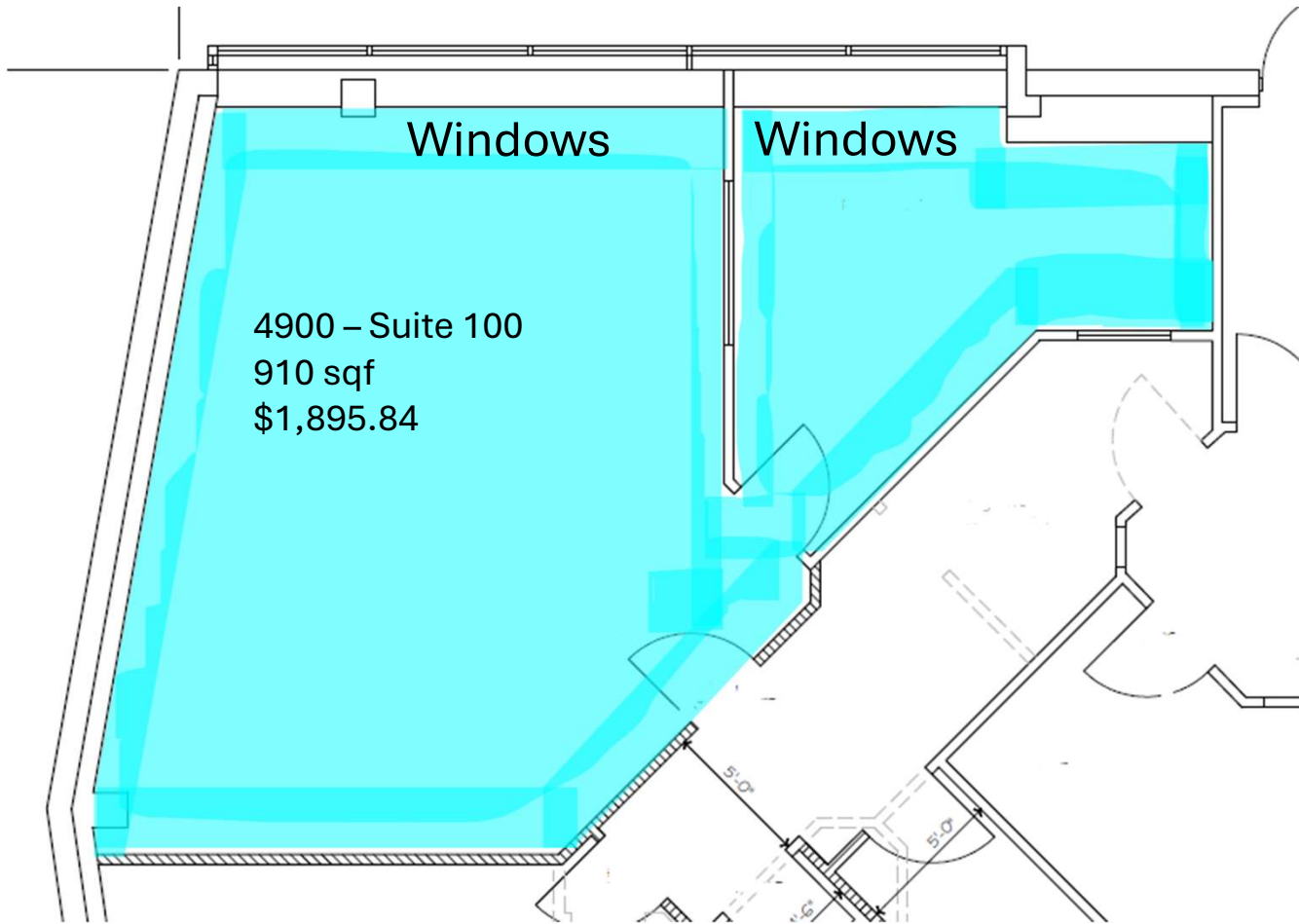


4900 – Suite 500
1,111 sqf
\$2,314.59

Terrell Road



Broadway



Terrell Road

