

Exclusive Medical & Office Suites
High Quality & Great Value! \$215/SF
Featuring Private, Outdoor Patio Balconies!

400 Plaza Drive
Folsom, CA 95630

FOR SALE OR LEASE



High-Quality, Value-Priced Office Condos in Folsom
Investment and Owner-User Opportunities

Fully Improved - Commercial Office Condo Suites:

			For Sale	For Lease
Suite 200	+/-16,783 SF	\$3,275,000	\$215/SF	\$1.95/SF

Additional Space Options Range from 3,000 to 16,783 SF

Suite 200	+/-8,625 SF	\$1,855,000 (\$215/SF)
Suite 204	+/-3,100SF	\$667,000 (\$215/SF)
Suite 205	+/-7,500 SF	\$1,615,000 (\$215/SF)

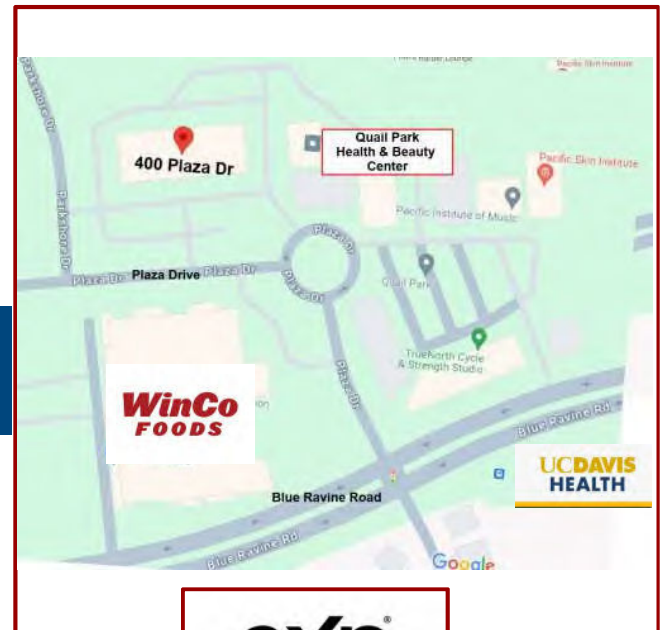
Units May be Sold Or Leased Separately

For Sale at \$215/SF

For Lease at \$1.95/SF Full Service Gross

Exclusively listed by:

TONY WOOD
Director of Leasing and Sales
eXp Commercial Real Estate Services
Cell: 916.390.1274
tony@tonywoodcommercial.com
DRE License # 0000549071



exp
COMMERCIAL

www.TonyWoodCommercial.com

eXp Commercial of California | License #02134436

The information contained herein was obtained from third parties, and it has not been independently verified by the real estate brokers. Buyers/tenants should have the experts of their choice inspect the property and information. Real estate brokers are not qualified to act as or select experts with respect to legal, tax, environmental, building construction, soils-drainage or other such matters.

Plaza Drive Professional Centre, Folsom, California
Medical and Office Uses Permitted - Commercial Office Suites

For Sale at \$215/SF For Lease at \$1.95/SF Full Service Gross:

400 Plaza Drive, Folsom CA 95360-Suite Details:

Additional Space Options Range from 3,000 to 16,783 SF

Suite 200 +/-8,625 SF \$1,855,000 (\$215/SF)

Suite 204 +/-3,100SF \$667,000 (\$215/SF)

Suite 205 +/-7,500 SF \$1,615,000 (\$215/SF)

Location Description: Plaza Drive Professional Centre is a premier medical and office park located off Folsom Blvd. This outstanding location offers easy accessibility with strong demographics and traffic counts.

This beautifully maintained office park is surrounded by ample parking and easy access. The location includes many businesses providing services to the entire community, including restaurants, major retail stores, medical and financial services, and residential communities, all within walking distance. The perfect location for your medical offices or business operations.

Monthly Association Dues of .55/SF include all utilities, interior & exterior maintenance and garbage collection.



Contact us today to learn more about these exceptional office spaces and to arrange your tour!

TONY WOOD, Director of Leasing and Sales

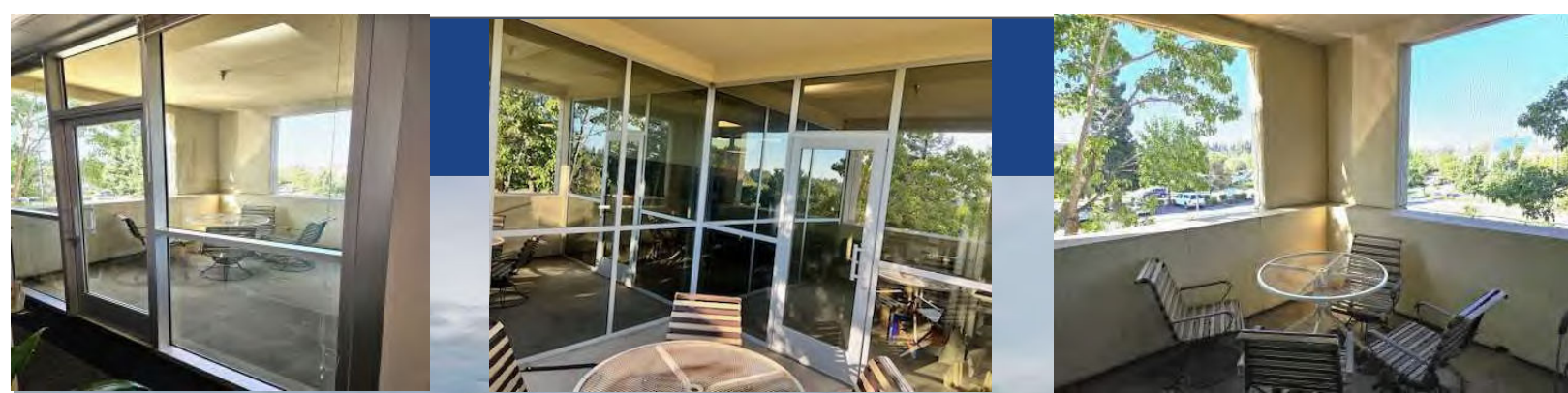
Cell: 916.390.1274

Email: Tony@TonyWoodCommercial.com

DRE # 00549071

www.TonyWoodCommercial.com

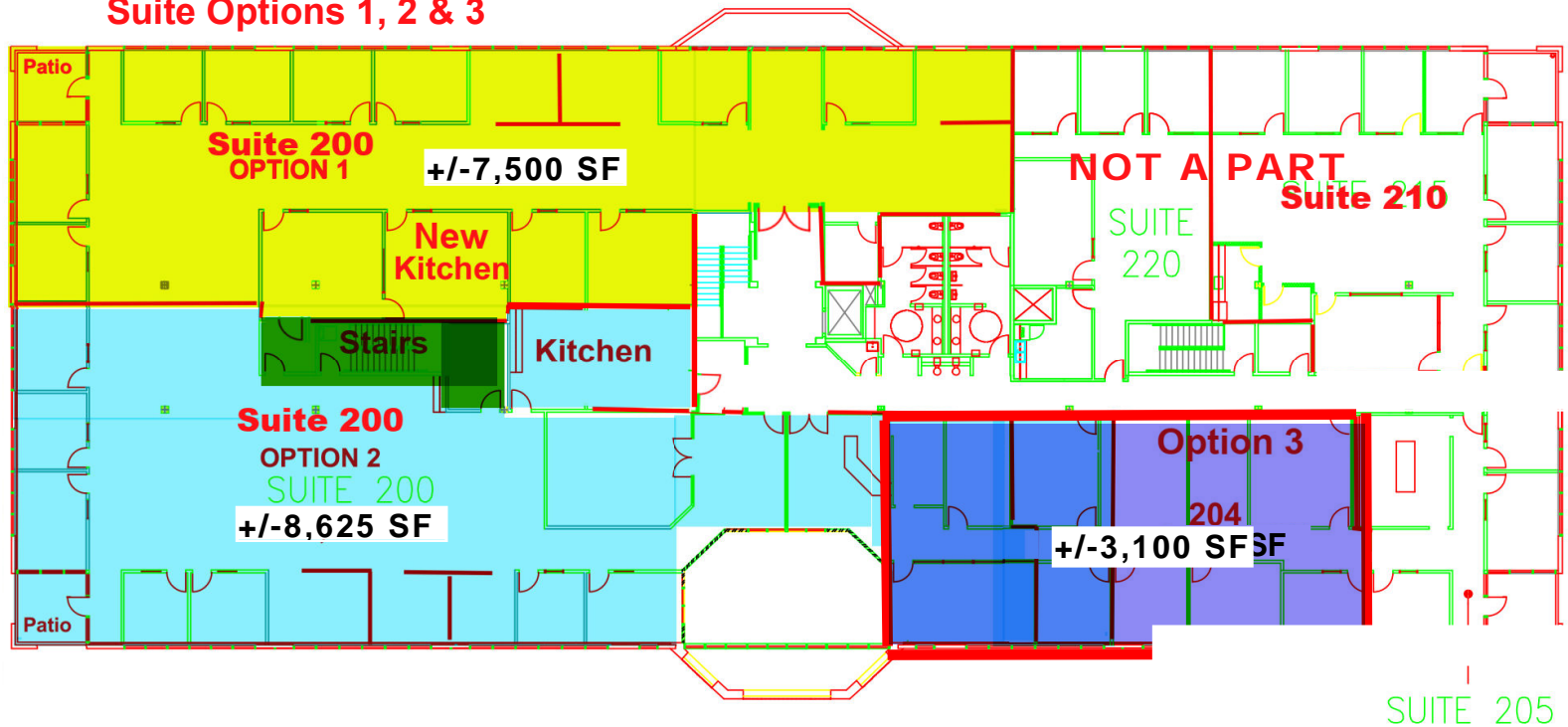




Private Balcony Patios



Suite Options 1, 2 & 3



For more information,
please contact:

TONY WOOD
Director of Leasing and Sales
Cell: 916.390.1274
Tony@TonyWoodCommercial.com
DRE # 00549071

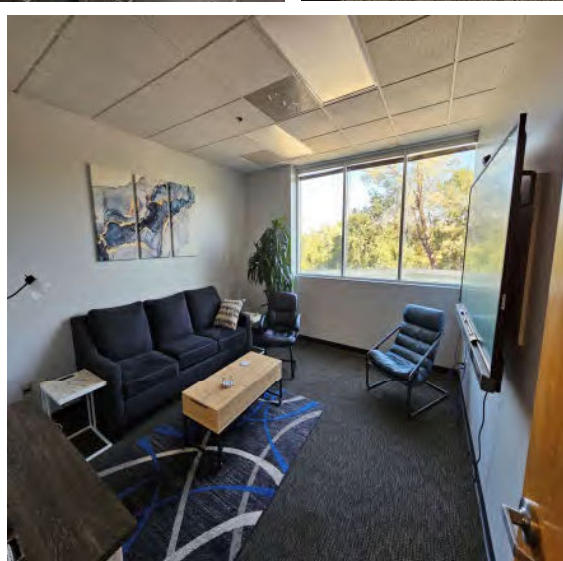
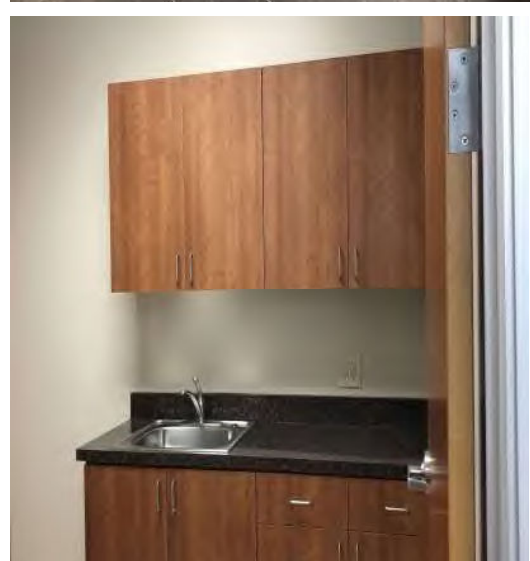
www.TonyWoodCommercial.com

eXp Commercial of California | License #02134436

The information contained herein was obtained from third parties, and it has not been independently verified by the real estate brokers. Buyers/tenants should have the experts of their choice inspect the property and information. Real estate brokers are not qualified to act as or select experts with respect to legal, tax, environmental, building construction, soils-drainage or other such matters.

PROPERTY PHOTOS - 400 Plaza Drive, Folsom, CA 95630

Suite 200 16,783 SF 20 Private Offices, 2 large conference rooms open work space, training & work stations
Can easily be divided into three separate suites ranging in size from 3,100 SF to 8,625 SF



eXp Commercial of California | License #02134436

The information contained herein was obtained from third parties, and it has not been independently verified by the real estate brokers. Buyers/tenants should have the experts of their choice inspect the property and information. Real estate brokers are not qualified to act as or select experts with respect to legal, tax, environmental, building construction, soils-drainage or other such matters.

PROPERTY PHOTOS
400 Plaza Drive, Folsom, CA 95630
Suite 204 3,100 SF
3 Private Offices, Large Training Area





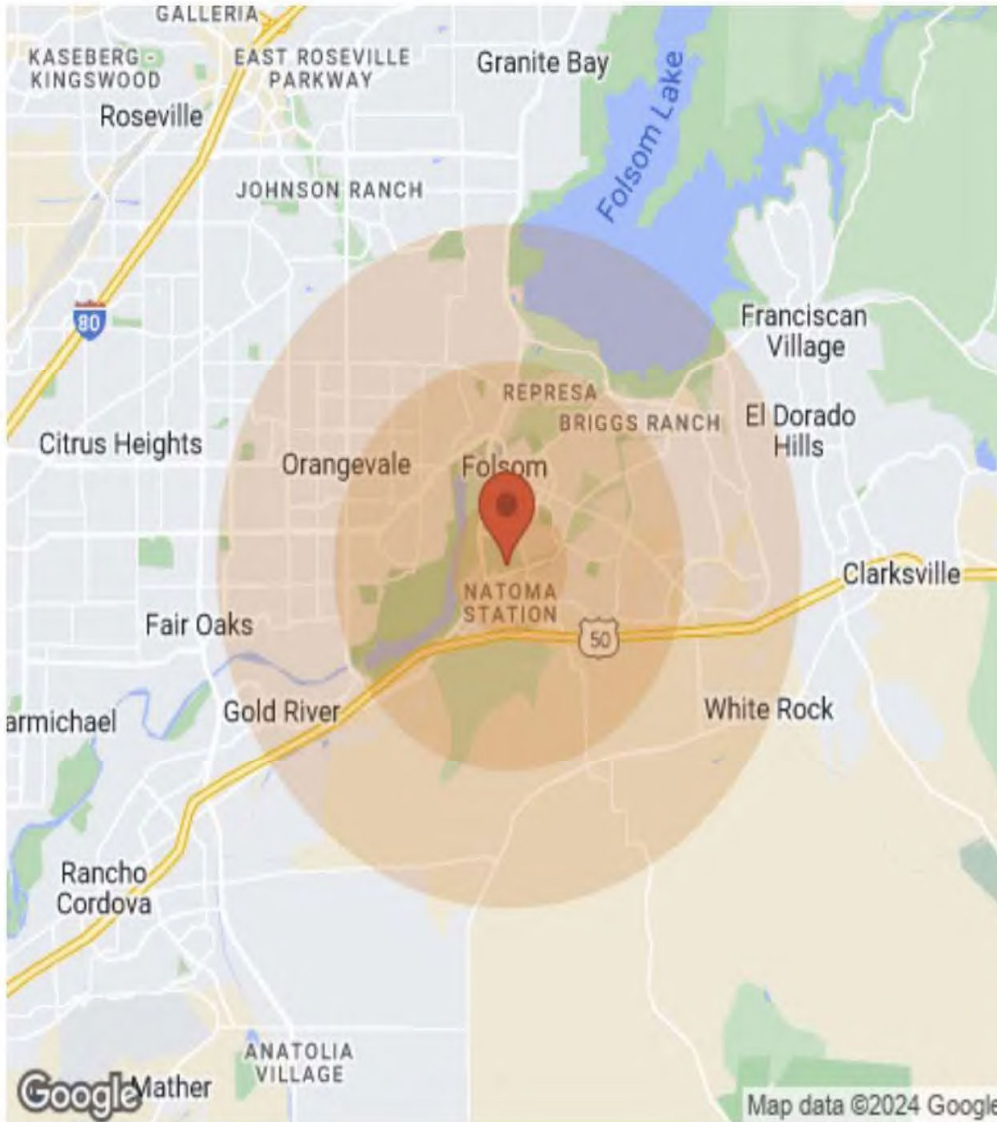
For more information,
please contact:

TONY WOOD
Director of Leasing and Sales
Cell: 916.390.1274
Tony@TonyWoodCommercial.com
DRE # 00549071

www.TonyWoodCommercial.com

eXp Commercial of California | License #02134436

The information contained herein was obtained from third parties, and it has not been independently verified by the real estate brokers. Buyers/tenants should have the experts of their choice inspect the property and information. Real estate brokers are not qualified to act as or select experts with respect to legal, tax, environmental, building construction, soils-drainage or other such matters.



Population	1 Mile	3 Miles	5 Miles
Male	4,999	35,037	70,017
Female	5,185	30,196	66,771
Total Population	10,184	65,233	136,788
Age	1 Mile	3 Miles	5 Miles
Ages 0-14	2,331	11,617	25,671
Ages 15-24	1,537	7,771	17,782
Ages 25-54	4,209	28,030	52,820
Ages 55-64	1,207	8,817	18,735
Ages 65+	900	8,998	21,780
Race	1 Mile	3 Miles	5 Miles
White	7,676	51,759	113,273
Black	77	3,644	4,012
Am In/AK Nat	18	164	203
Hawaiian	N/A	34	48
Hispanic	796	7,083	12,432
Multi-Racial	1,156	8,202	15,692
Income	1 Mile	3 Miles	5 Miles
Median	\$99,142	\$84,631	\$88,967
< \$15,000	97	1,087	2,022
\$15,000-\$24,999	154	1,377	2,913
\$25,000-\$34,999	193	1,823	3,283
\$35,000-\$49,999	337	2,819	4,989
\$50,000-\$74,999	639	3,866	7,944
\$75,000-\$99,999	533	3,648	7,301
\$100,000-\$149,999	972	4,942	11,081
\$150,000-\$199,999	549	2,646	5,843
> \$200,000	257	1,157	4,516
Housing	1 Mile	3 Miles	5 Miles
Total Units	4,020	25,345	54,317
Occupied	3,871	24,032	51,732
Owner Occupied	2,725	15,093	37,681
Renter Occupied	1,146	8,939	14,051
Vacant	149	1,313	2,585

For more information,
please contact:

TONY WOOD
Director of Leasing and Sales
 Cell: 916.390.1274
Tony@TonyWoodCommercial.com
 DRE # 00549071

www.TonyWoodCommercial.com

eXp Commercial of California | License #02134436

The information contained herein was obtained from third parties, and it has not been independently verified by the real estate brokers. Buyers/tenants should have the experts of their choice inspect the property and information. Real estate brokers are not qualified to act as or select experts with respect to legal, tax, environmental, building construction, soils-drainage or other such matters.