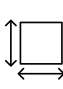



**PROPERTY INFORMATION**

 2,102 SF Upstairs  
Space Available

 High Traffic Area

 Near Tierra Verde, Beaches

 Amazing Visibility

 Located on Pinellas Bayway



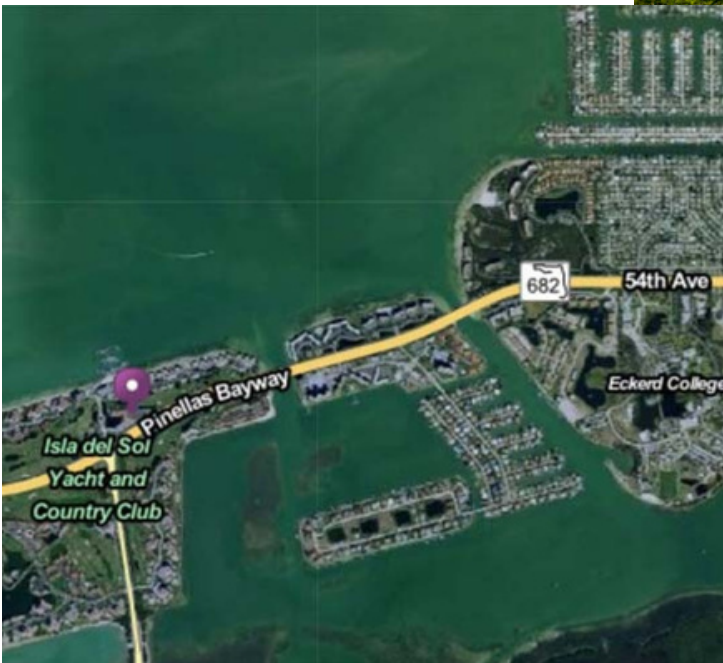
**DEMOGRAPHICS**

Total Population:

1 mile: 4,237

3 miles: 42,677

5 miles: 121,102



**For additional information, please contact:**

Chris Niewiarowski

[chrisn@europeanequities.com](mailto:chrisn@europeanequities.com)

727.723.3771 ext. 344 18167

US HWY 19 N, STE 450, Clearwater, FL 33756

# RETAIL SPACE FOR LEASE

## ISLA DEL SOL SHOPPERS VILLAGE

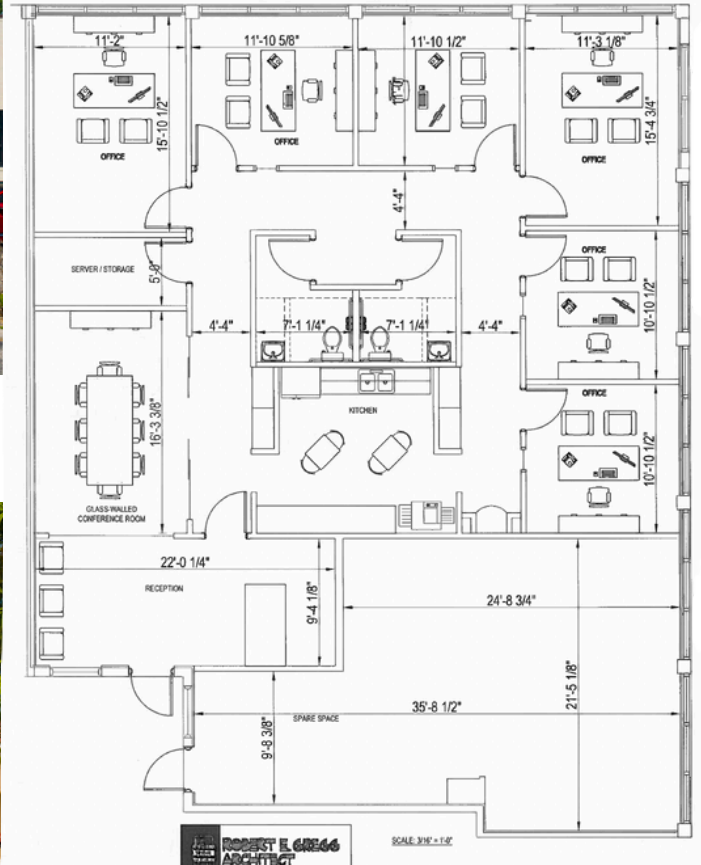
5901 SUN BLVD., ST. PETERSBURG, FL 33715



**OFFICE ENTRANCE**



**PROPERTY PHOTO**



**AVAILABLE OFFICE FLOOR PLAN**

**For additional information, please contact:**

Chris Niewiarowski

[chrisn@europeanequities.com](mailto:chrisn@europeanequities.com)

727.723.3771 ext. 344 18167

US HWY 19 N, STE 450, Clearwater, FL 33756