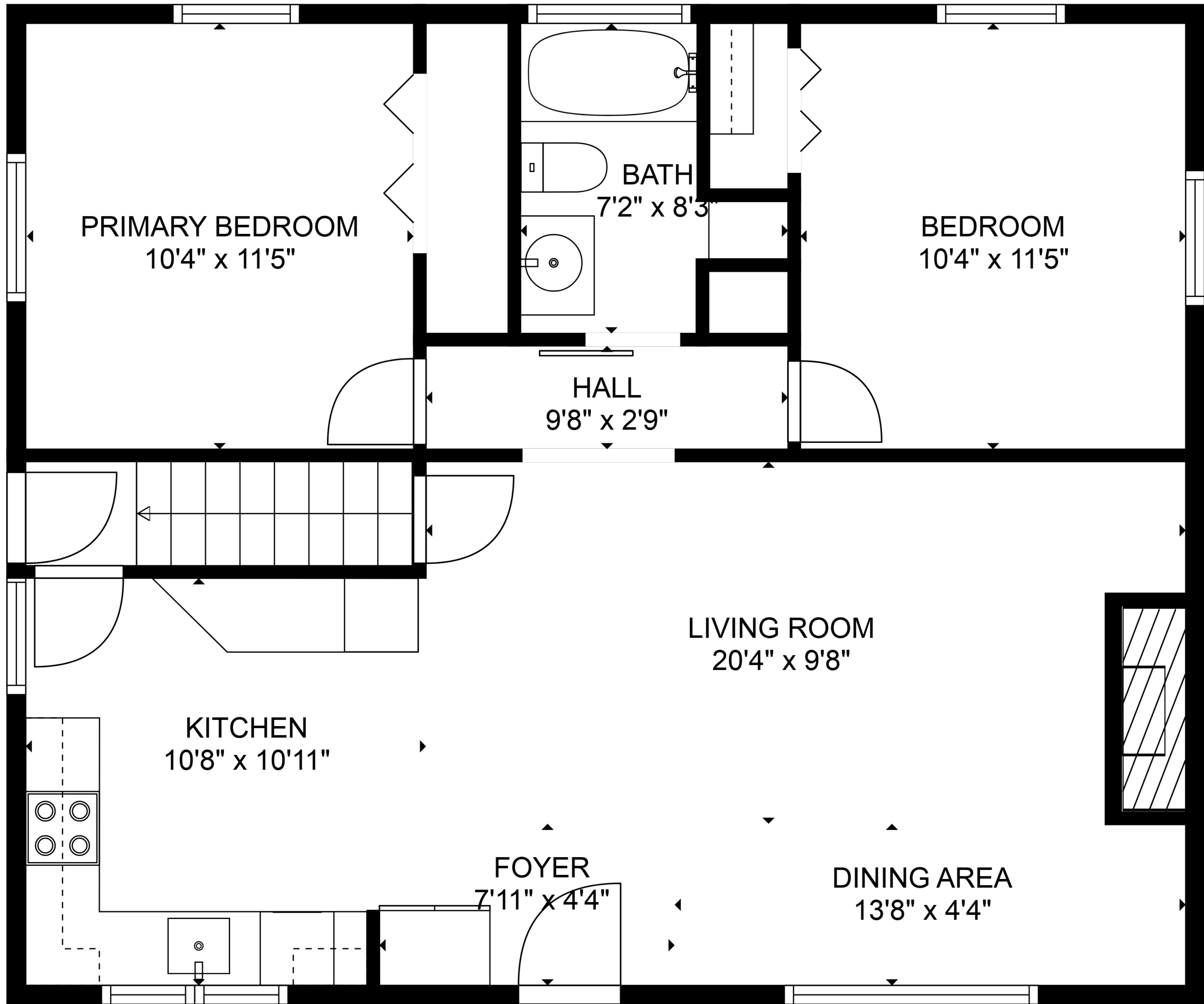


TOTAL: 1595 sq. ft

BELOW GROUND: 766 sq. ft, FLOOR 2: 799 sq. ft, FLOOR 3: 30 sq. ft
EXCLUDED AREAS: LOW CEILING: 194 sq. ft, ATTIC: 243 sq. ft

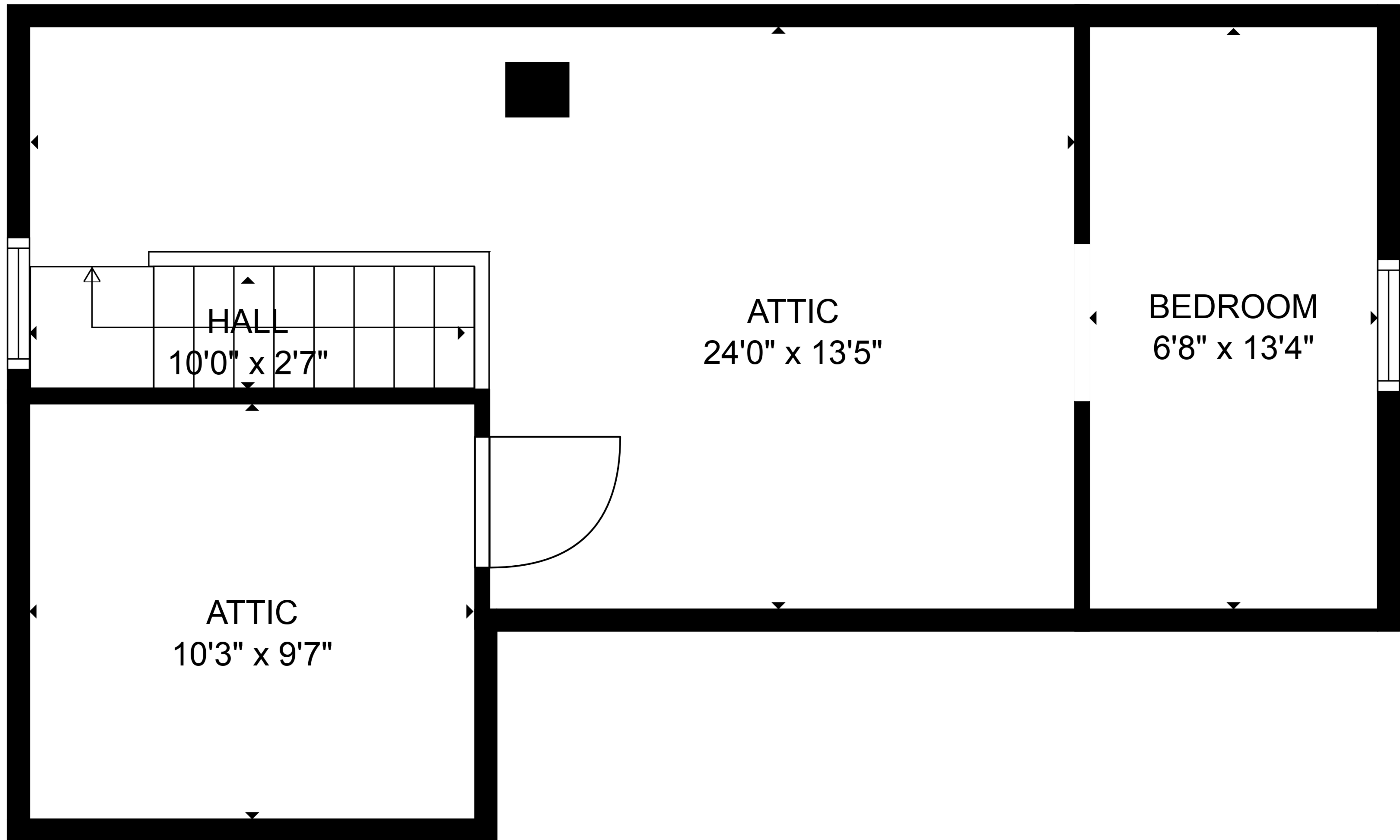
SIZES AND DIMENSIONS ARE APPROXIMATE, ACTUAL MAY VARY.



TOTAL: 1595 sq. ft

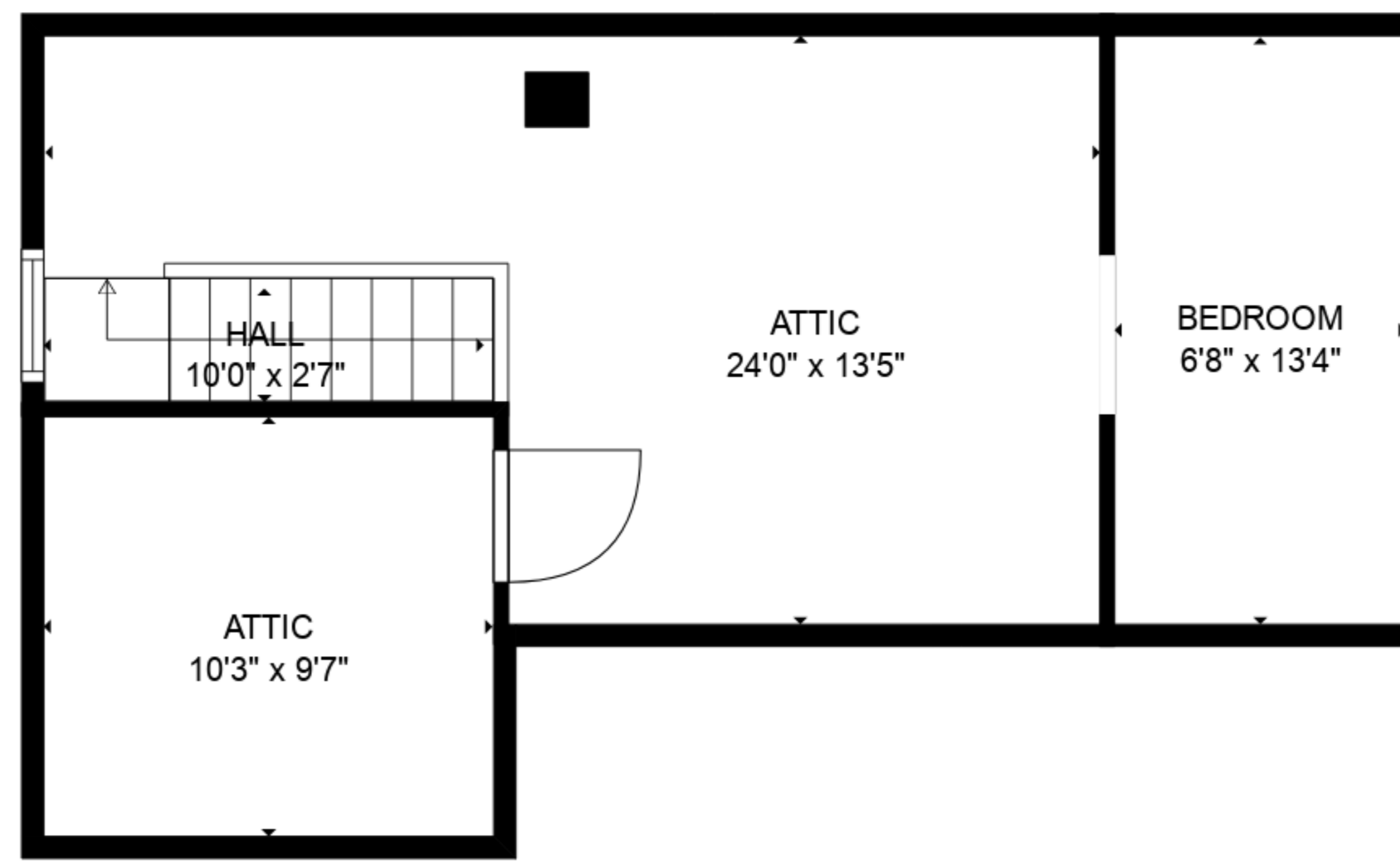
BELOW GROUND: 766 sq. ft, FLOOR 2: 799 sq. ft, FLOOR 3: 30 sq. ft
EXCLUDED AREAS: LOW CEILING: 194 sq. ft, ATTIC: 243 sq. ft

SIZES AND DIMENSIONS ARE APPROXIMATE, ACTUAL MAY VARY.



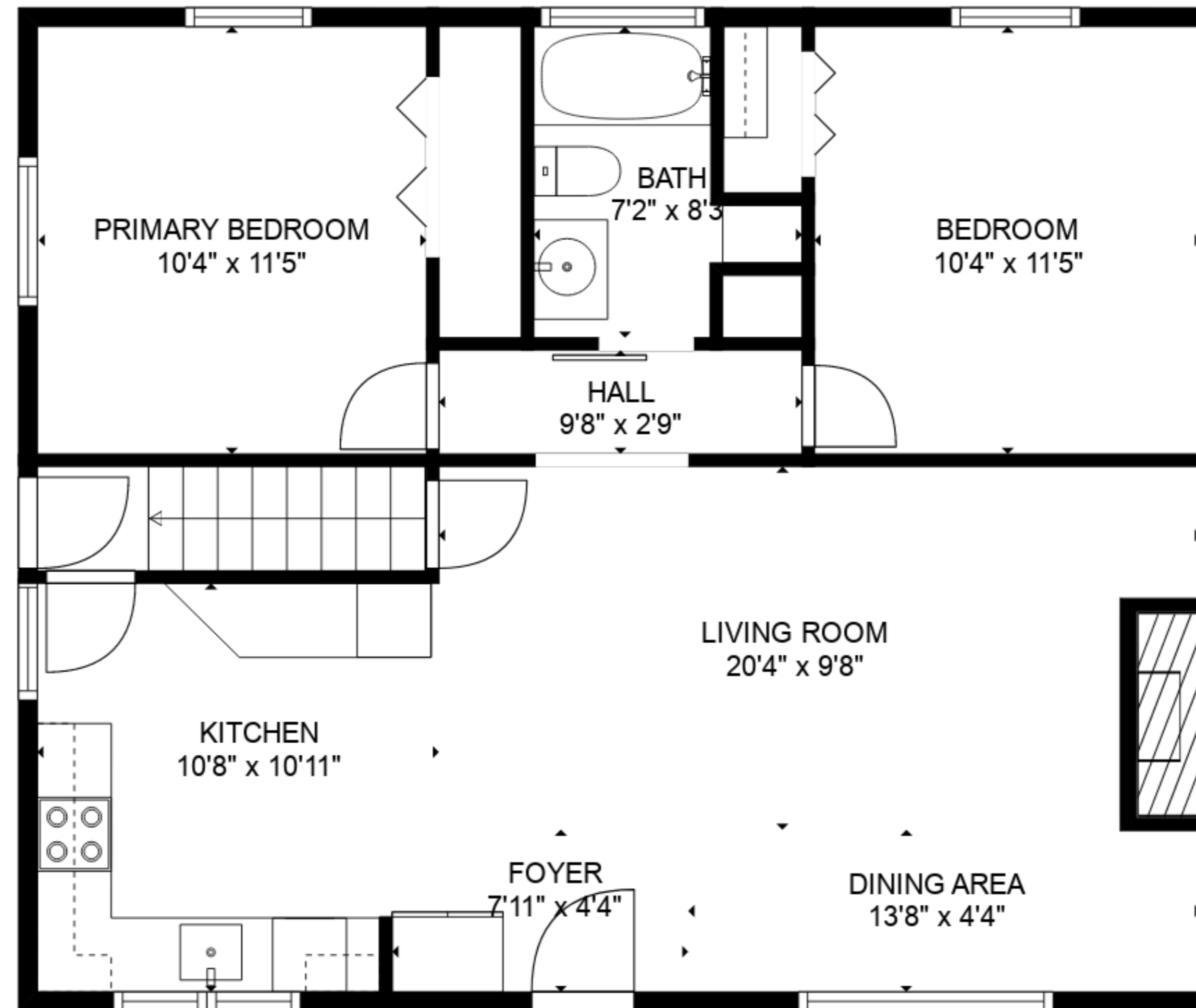
TOTAL: 1595 sq. ft
BELOW GROUND: 766 sq. ft, FLOOR 2: 799 sq. ft, FLOOR 3: 30 sq. ft
EXCLUDED AREAS: LOW CEILING: 194 sq. ft, ATTIC: 243 sq. ft

SIZES AND DIMENSIONS ARE APPROXIMATE, ACTUAL MAY VARY.

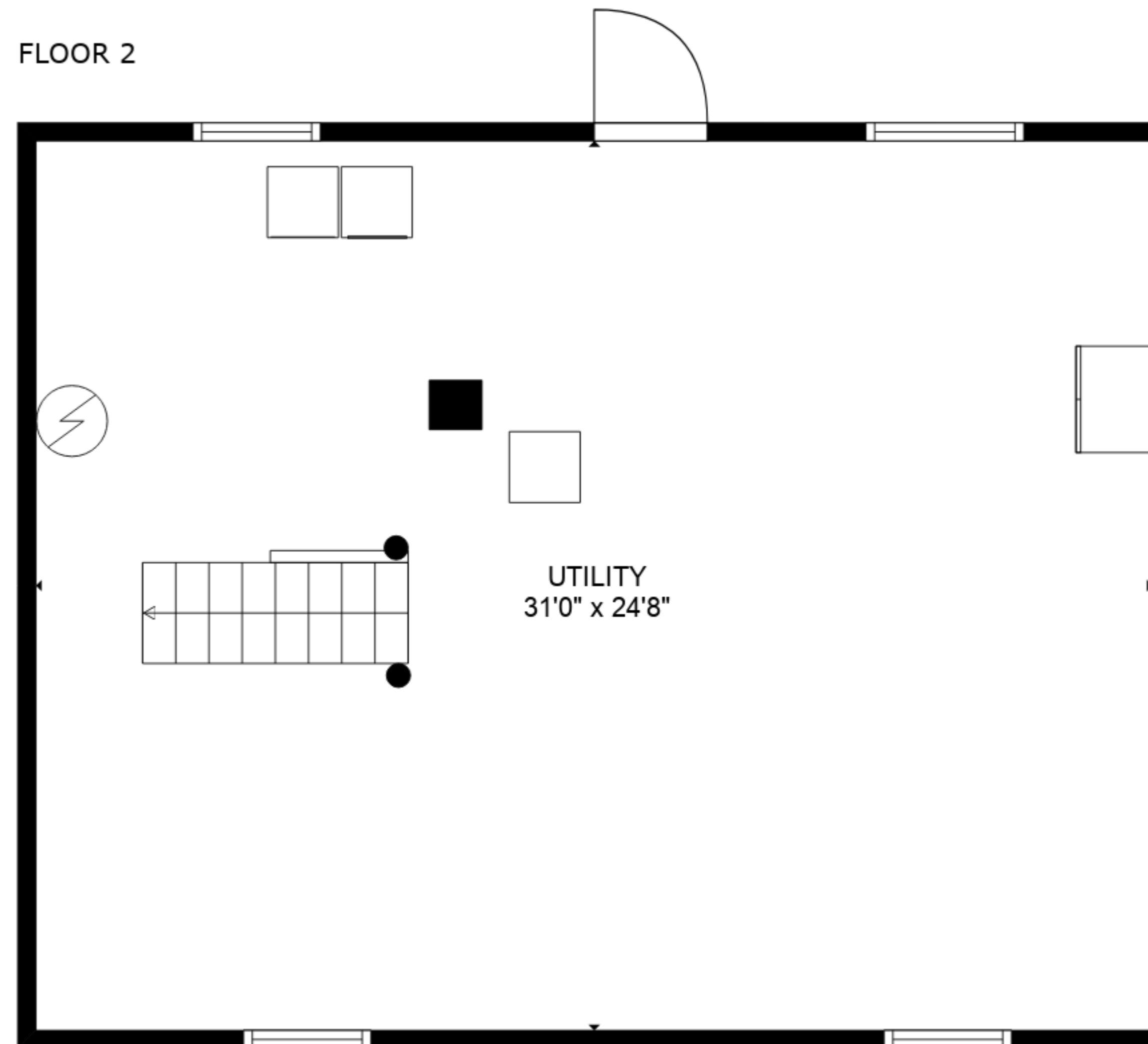


FLOOR 3

1



FLOOR 2



FLOOR 1

TOTAL: 1595 sq. ft
 BELOW GROUND: 766 sq. ft, FLOOR 2: 799 sq. ft, FLOOR 3: 30 sq. ft
 EXCLUDED AREAS: LOW CEILING: 194 sq. ft, ATTIC: 243 sq. ft

SIZES AND DIMENSIONS ARE APPROXIMATE, ACTUAL MAY VARY.