



Pine Street / RPS



# ST. JOHNS BUSINESS PARK

St. Johns Business Park, located at 11233 St Johns Industrial Parkway, Jacksonville, FL 32246. This premier business park features six versatile buildings, designed to accommodate a wide range of business needs. The business park is ideal for light industrial, warehousing, distribution, and office use, with ample parking and easy access for large vehicles.



**ZONING**

**IBP**



**SPACE SIZE**

**1,130 - 7,200± SF**



**LOADING**

**Dock-high**



**CEILING HEIGHT**

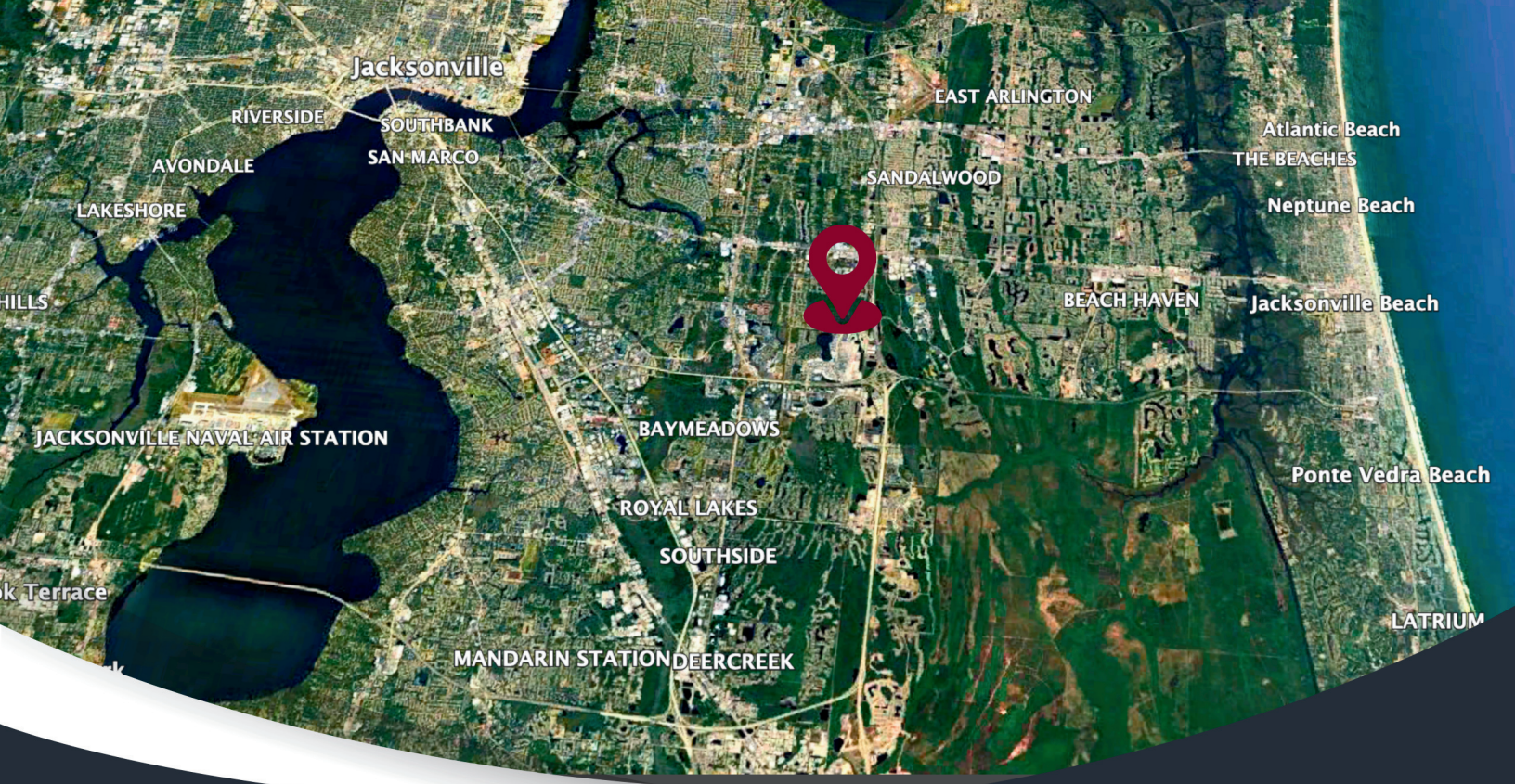
**12'-18'**

**Mark Wainwright**

Mark@psrps.com | (904) 728-1085

**Summer Wainwright**

Summer@psrps.com | (904) 377-4949



Jacksonville

RIVERSIDE

SOUTHBANK

SAN MARCO

EAST ARLINGTON

Atlantic Beach

THE BEACHES

Neptune Beach

AVONDALE

SANDALWOOD

Jacksonville Beach

LAKESHORE

BEACH HAVEN

BAYMEADOWS

Ponte Vedra Beach

ROYAL LAKES

SOUTHSIDE

LATRIUM

MANDARIN STATION DEERCREEK

JACKSONVILLE NAVAL AIR STATION

Terrace



**11222 ST. JOHNS INDUSTRIAL PKY**



**11232 ST. JOHNS INDUSTRIAL PKY**



**11233 ST. JOHNS INDUSTRIAL PKY**



**11239 ST. JOHNS INDUSTRIAL PKY**



**11243 ST. JOHNS INDUSTRIAL PKY**



**11290 ST. JOHNS INDUSTRIAL PKY**

[CONTACT US](#)



904.398.1044



[INFO@PSRPS.COM](mailto:INFO@PSRPS.COM)