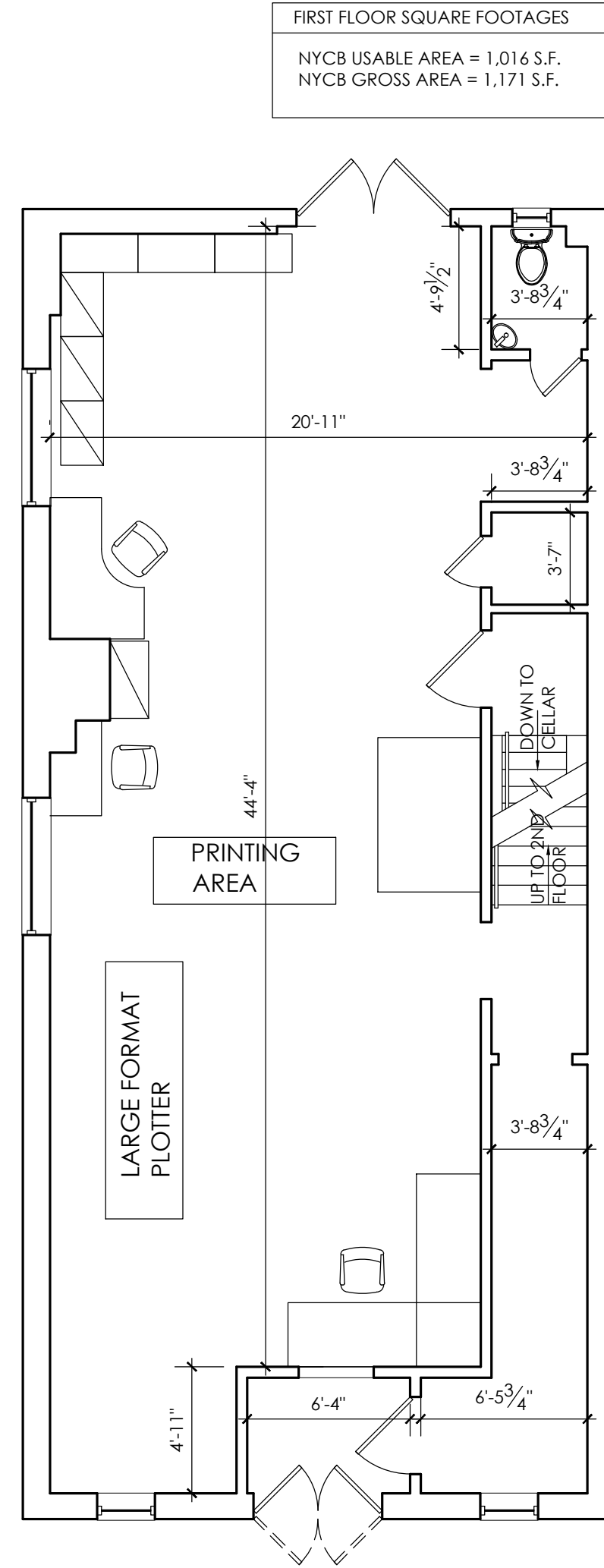
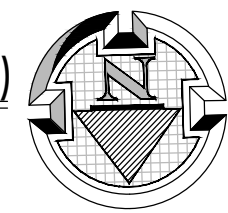
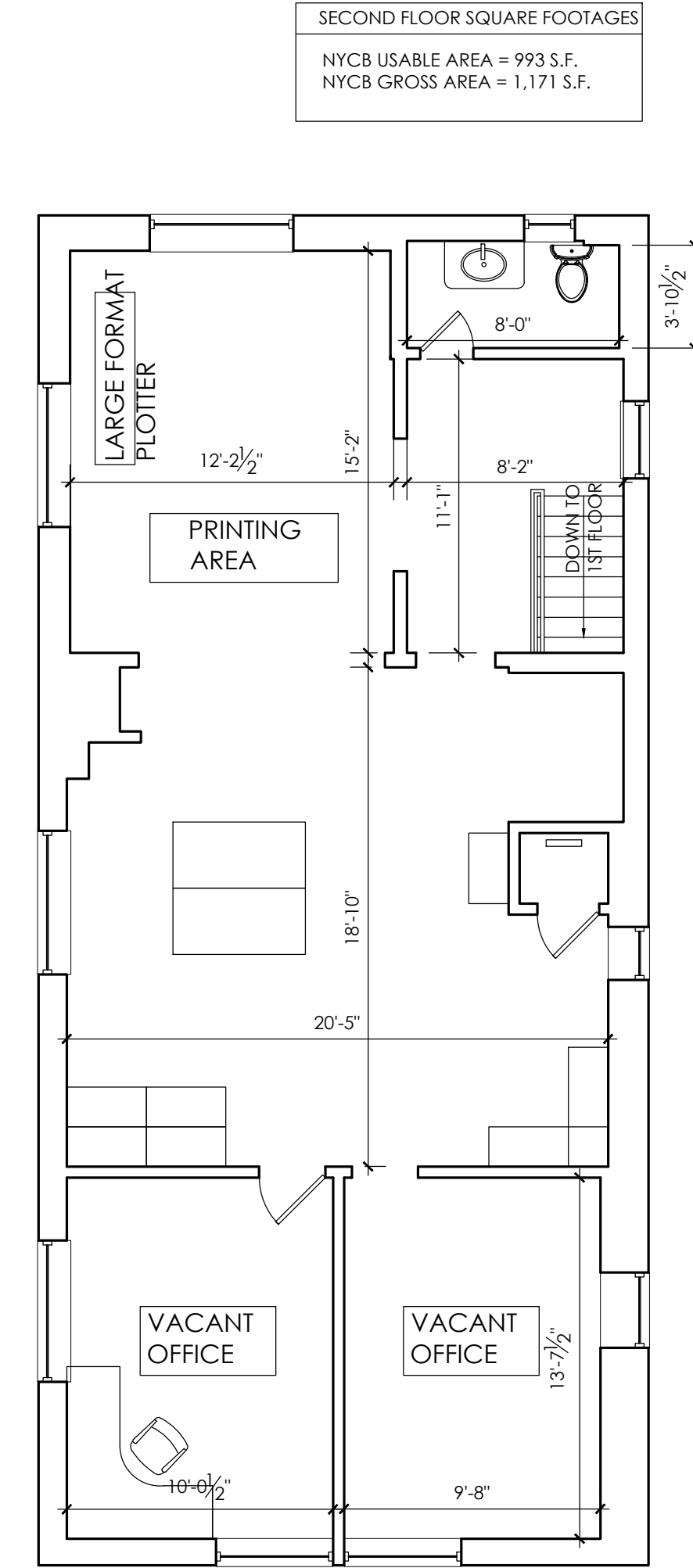
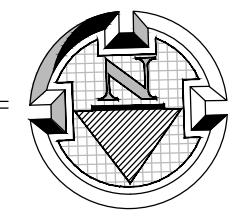


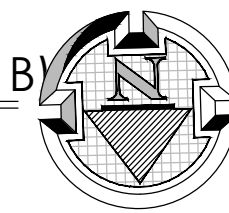
1 EXIST. CELLAR FLOOR PLAN (BLDG. B)
 EC-3 SCALE: 3/16" = 1'-0"



2 EXIST. FIRST FLOOR PLAN (BLDG. B)
 EC-3 SCALE: 3/16" = 1'-0"



3 EXIST. SECOND FLOOR PLAN (BLDG. B)
 EC-3 SCALE: 3/16" = 1'-0"



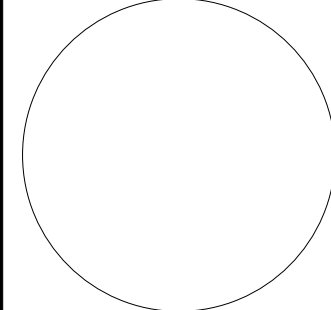
THESE PLANS ARE AN INSTRUMENT OF SERVICE AND OR THE PROPERTY OF THE ARCHITECT. INFRINGEMENTS WILL BE PROSECUTED. WARNING: IT IS A VIOLATION OF THE NYS EDUCATION LAW ARTICLE 145 FOR ANY PERSON, UNLESS HE IS ACTING UNDER THE DIRECTION OF A LICENSED ARCHITECT, TO ALTER THIS ITEM IN ANY WAY.

REVISIONS / SUBMITTALS:

DRAWING NUMBER:
EC-3

HOSCHLER · GRAZIOSI
 ARCHITECTS P.C.
 123 South Street, Suite 206
 Oyster Bay, NY 11771
 Phone: 516.268.5364
 Fax: 516.269.5324

SCALE: AS NOTED
 DATE: 05.28.2012
 DRAWN BY: SB
 COMM: 12136



DRAWING TITLE:
EXISTING PLANS (BLDG. B)

PROJECT:
**NYCB RICHMOND COUNTY SAVINGS
 BRANCH # 124 VERIFICATION**
 1214 CASTLETON AVE
 STATEN ISLAND, NY