

**BRIDGEWATER COMMONS**  
Great Clips SUBWAY  
1,000 - 1,200 SF  
AVAILABLE

**ALOMA CENTER**  
Swig SAGE DENTAL  
2,134 SF  
AVAILABLE

**TRINITY CENTER**  
TUCUNA FLATS DUNKIN'



FRONTING ALOMA AVE BETWEEN SR 417 & TUSCAWILLA RD | OVIEDO, FL 32765

# OVIEDO, FL MULTITENANT

RETAIL SPACE FOR LEASE BRIDGEWATER COMMONS



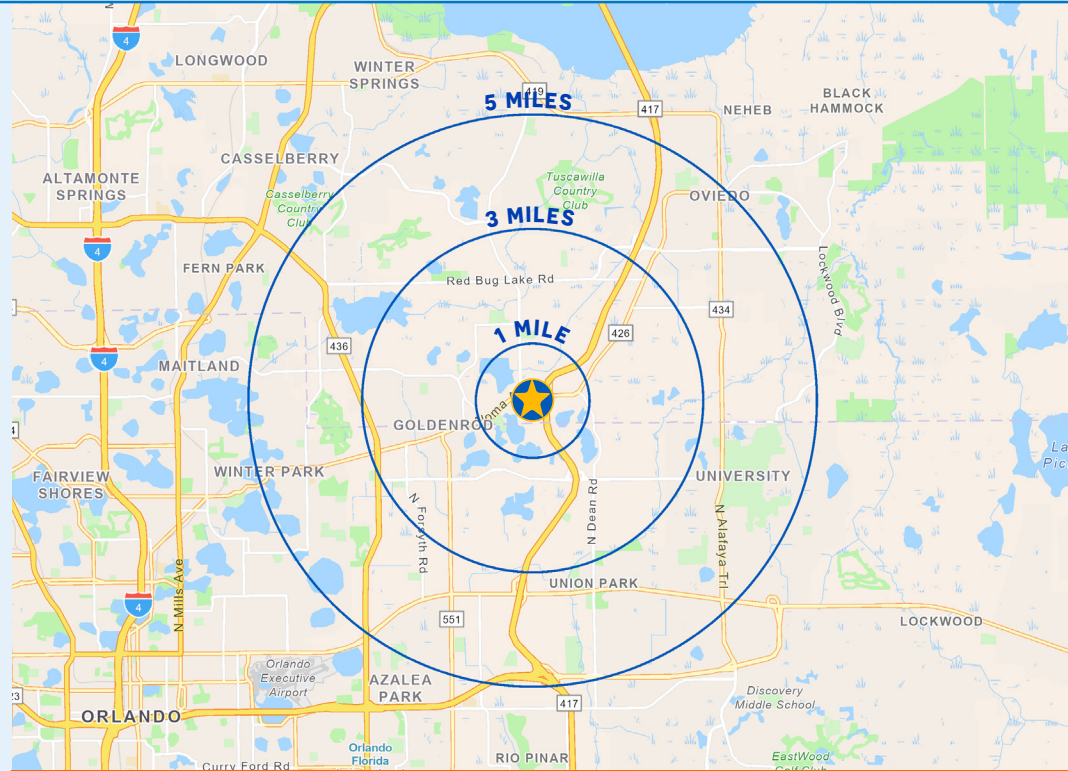
# PROJECT DETAILS

OVIEDO, FL MULTITENANT • 1,000-1,200 SF AVAILABLE • RETAIL SPACE FOR LEASE

## PROPERTY HIGHLIGHTS

- Shops spaces available with monument signage on Aloma Ave
- Located in 32766-Oviedo, which ranks as the wealthiest by median household income in the Orlando metro area
- 3 centers share 2 traffic lights, a median cut on Aloma, and cross access
- Located at the SWC of Aloma Ave (38,000 AADT) and Deep Lake Rd
- Signalized intersection shared with Walmart, Kohl's, Publix
- High Quality collection of tenants-national restaurants coupled with neighborhood services and local favorites

## AREA RETAILERS



## DEMOGRAPHICS

	1 MILE	3 MILE	5 MILE
POPULATION	9,233	88,774	275,401
DAYTIME POPULATION	6,639	74,215	273,474
AVERAGE HH INCOME	\$86,477	\$84,814	\$79,279
TOTAL HOUSEHOLDS	3,648	35,173	100,808

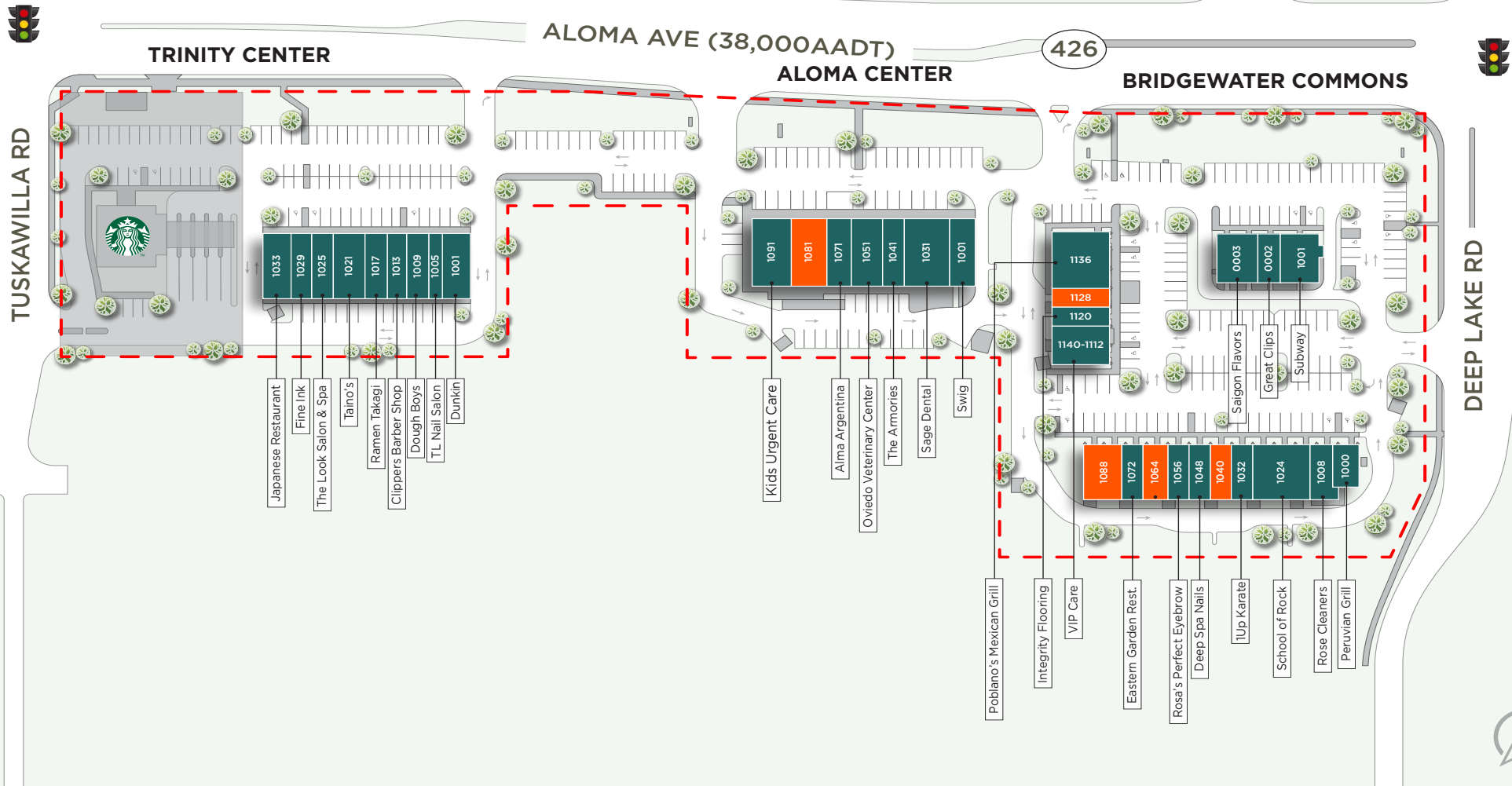
**SITE PLAN**

TRINITY CENTER		
SUITE	TENANT	SF
1001	Dunkin'	2,100
1005	TL Nail Salon	980
1009	Dough Boys	1,400
1013	Clippers Barber Shop	1,050
1017	Ramen Takagi	1,050
1021	Tiano's	2,100
1025	The Look Salon & Spa	1,400
1029	Fine Ink	1,400
1033	Japanese Restaurant	2,100

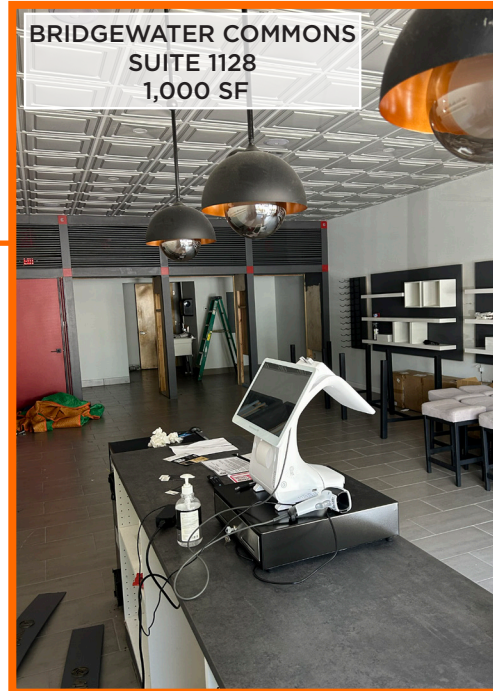
ALOMA CENTER		
SUITE	TENANT	SF
1001	Swig	1,850
1031	Sage Dental	2,905
1041	The Armories	1,650
1051	Oviedo Veterinary Center	2,292
1071	Alma Argentina	1,391
1081	Available- former Optometrist	2,134
1091	KIDS URGENT CARE	2,600

BRIDGEWATER COMMONS		
SUITE	TENANT	SF
1000	Peruvian Grill	1,255
1008	Rose Cleaners	1,551
1024	School of Rock	3,005
1032	1Up Karate	1,200
1040	Available- former Hair Salon	1,200
1048	Deep Spa Nails	1,200
1056	Rosa's Perfect Eyebrow	1,200
1064	Available- former Plant Shop	1,200
1072	Eastern Garden Rest.	1,200

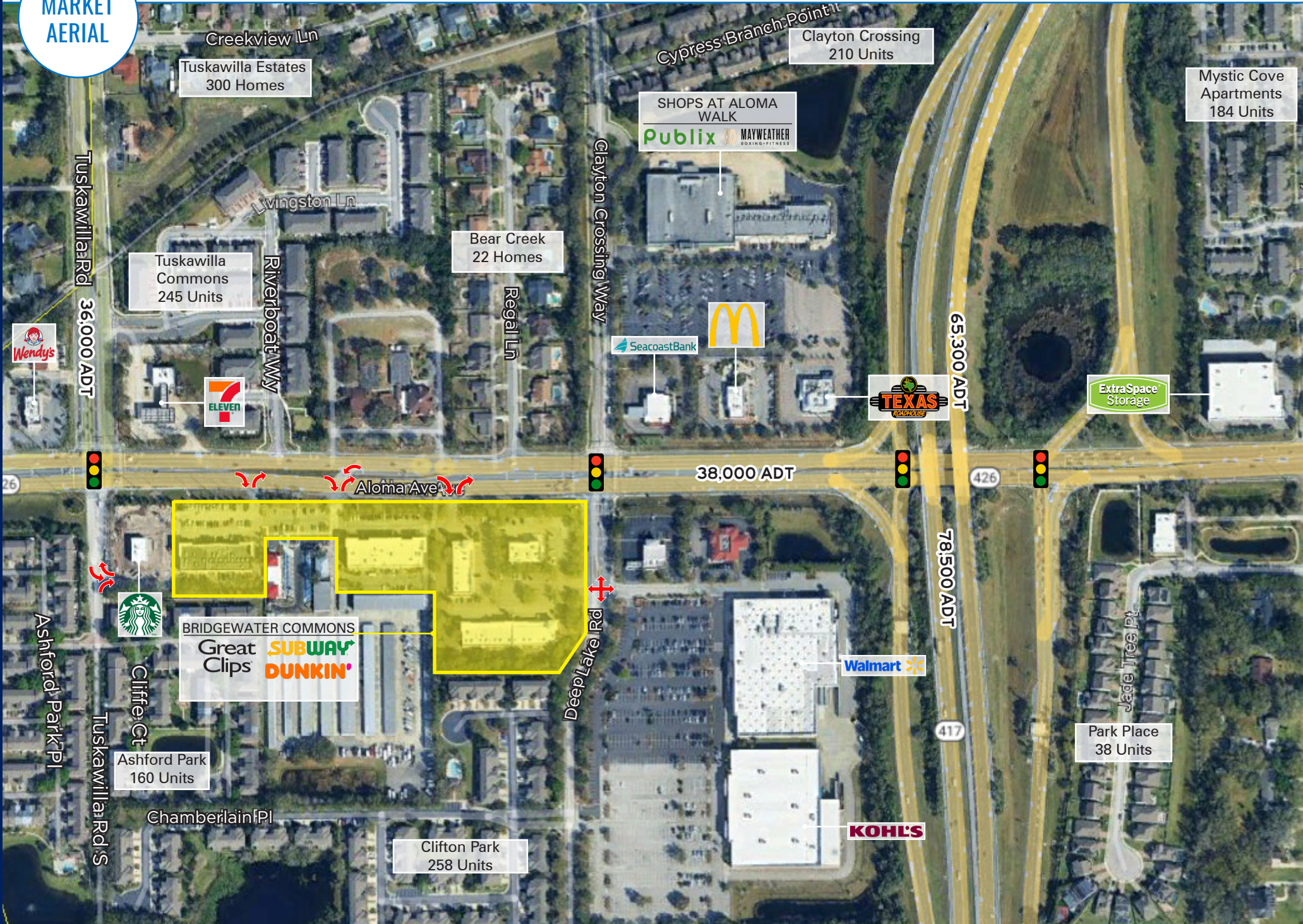
BRIDGEWATER COMMONS		
SUITE	TENANT	SF
1088	Available-former lounge with patio	2,400
1001	Subway	1,769
0002	Great Clips	1,000
0003	Saigon Flavors	1,773
1140-1112	VIP Care	1,000
1120	Integrity Flooring	1,000
1128	Available	1,000
113	Poblano's Mexican Grill	3,000



SUITE PHOTOS



MARKET AERIAL





FRONTING ALOMA AVE BETWEEN SR 417 & TUSCAWILLA RD  
OVIDO, FL 32765

# OVIDO, FL MULTITENANT

**RETAIL SPACE FOR LEASE BRIDGEWATER COMMONS**

**STACY MILLER MENENDEZ**

321.303.0884  
SMENENDEZ@ATLANTICRETAIL.COM



**ORLANDO**  
1180 SOLANA AVENUE  
WINTER PARK FL, 32789  
407.919.6575

- ALBANY
- ATLANTA
- BOSTON
- CHARLOTTE
- LOS ANGELES
- NEW YORK CITY
- PITTSBURGH
- WEST PALM BEACH

[WWW.ATLANTICRETAIL.COM](http://WWW.ATLANTICRETAIL.COM)

[LINKEDIN.COM/COMPANY/ATLANTIC-RETAIL-PROPERTIES](https://www.linkedin.com/company/atlantic-retail-properties)  
 [INSTAGRAM.COM/ATLANTIC\\_RETAIL/](https://www.instagram.com/atlantic_retail/)



© ATLANTIC RETAIL 2025 The information above has been obtained from sources believed reliable. While we do not doubt its accuracy, we have not verified it and make no guarantee, warranty or representation about it.